

ORIGINAL MAP
SHOWING
TOPOGRAPHY
SCALE: 1 INCH = 10 FT.
WORK BY.....J.P. MENNE
BY.....M.E. ANDERSON
L.C. WILSON
BY.....J.J. EDWARDS
K.R. MAPHERSON
TABLE SHEET E-469
S. 1892-111-110

REVISIONS:
BY.....M.E. ANDERSON
DATE.....

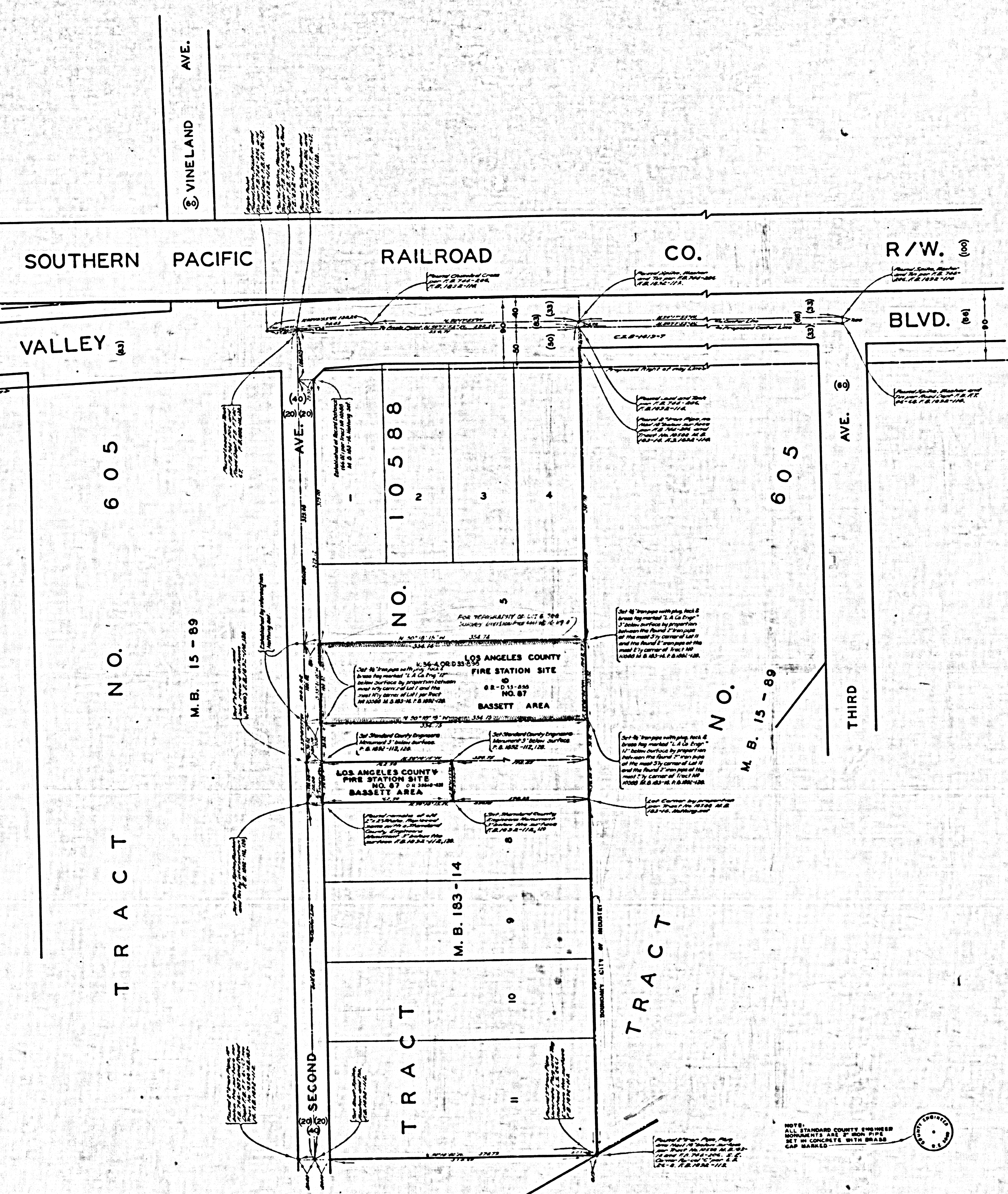
REVISIONS:
BY.....J.J. EDWARDS
DATE.....

REVISIONS:
BY.....K.R. MAPHERSON
DATE.....

REVISIONS:
BY.....P.R. SNYDER
DATE.....

REVISIONS:
BY.....L.C. WILSON
DATE.....

REVISIONS:
BY.....A.R. MAPHERSON
DATE.....



COUNTY OF LOS ANGELES
MAP OF
**LOS ANGELES COUNTY
FIRE STATION SITE
NO. 87
BASSETT AREA**
BEING
A PORTION OF LOT 7
TRACT NO. 10588 M.B. 183-14
COUNTY SURVEYORS MAP NO. B-2577
SCALE: 1 INCH = 50 FT.

JOB NUMBER 0801.80
JOHN A. LAMBIE - COUNTY ENGINEER
SURVEYED - OCTOBER 1955
SURVEYED ON REQUEST OF THE CHIEF ENGINEER
COUNTY FIRE PROTECTION DISTRICTS
UNDER SEC. 79, ORD. 4099, BY LETTER
DATED SEPT. 26, 1955
BEARINGS ARE BASED ON THE BEARING OF
VALLEY BLVD. PER. C.S.B. 1419-7
P.B. 1892-111-110

FIELD WORK BY.....P.R. SNYDER
OFFICE WORK BY.....L.C. WILSON
CHECKED BY.....K.R. MAPHERSON

REVISIONS:
BY.....P.R. SNYDER
DATE.....

REVISIONS:
BY.....L.C. WILSON
DATE.....

REVISIONS:
BY.....K.R. MAPHERSON
DATE.....

CSB-2577
A1 OF A2

SOUTHERN PACIFIC

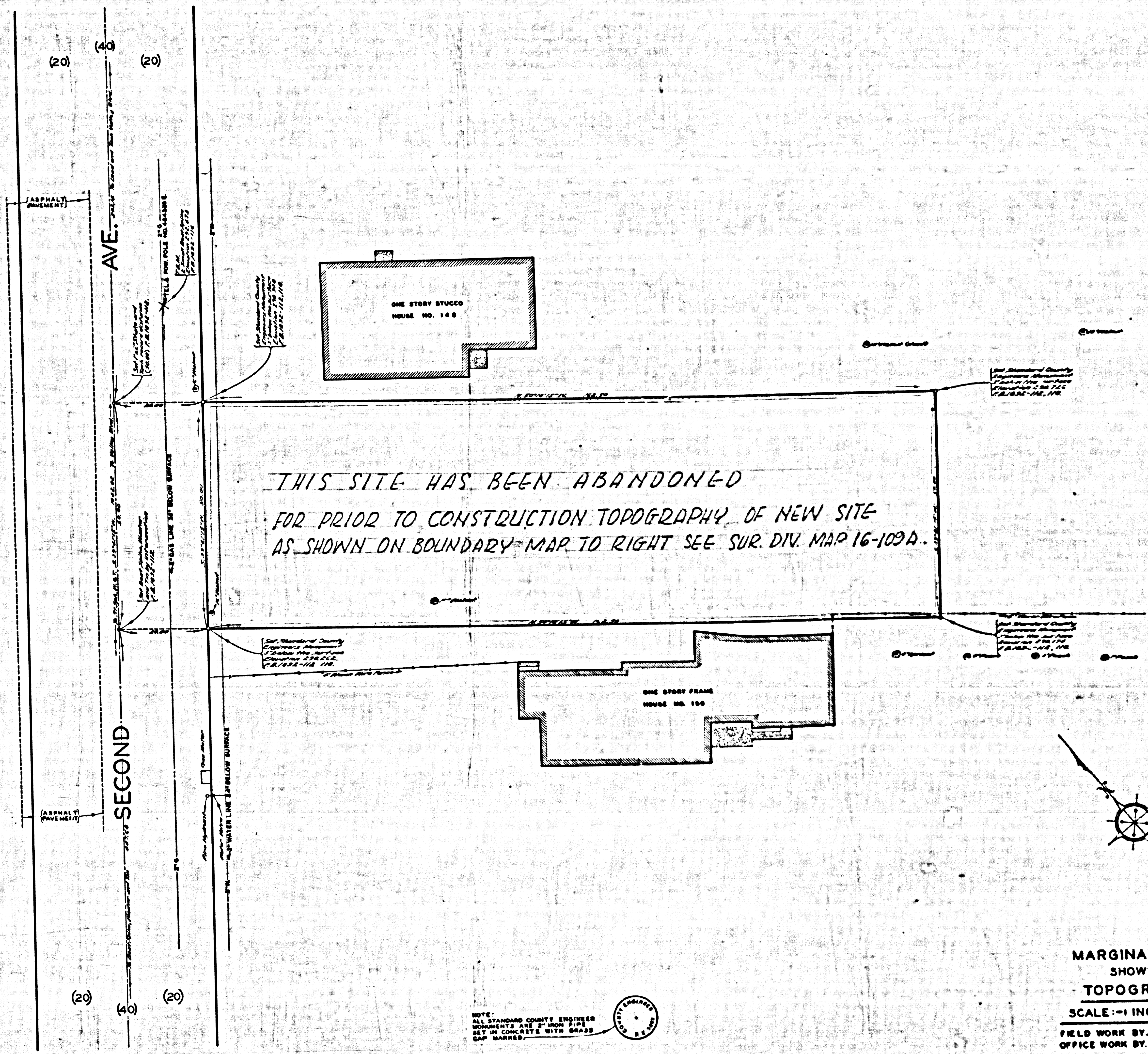
VALLEY

605

N.O.

M.B. 15-89

T R A C T



NOTE:
 ALL STAKING COUNTY ENGINEER
 MONUMENTS ARE 2" IRON PIPES
 IN CONCRETE WITH BRASS
 CAP MARKED WITH BRASS

MARGINAL MAP
 SHOWING
 TOPOGRAPHY
 SCALE: 1" = 10 FT.
 FIELD WORK BY... J. P. MENNE
 OFFICE WORK BY... M. E. ANDERSON
 L. C. WILSON
 CHECKED BY... J. J. EDWARDS
 K. R. SPHERSON
 PLANE TABLE SHEET E-400
 F.B. 1882-111-116

NOTE:
 ELEVATION 8' 6" N-10 AT VALLEY BLVD
 AND 2' 6" N-22 S-14 OF CENTER LINE OF
 VALLEY BLVD AND 27' 8" N-10 OF CENTER LINE
 OF 2ND AVE. 1952 AND 25' 8" N-10

CSB-2577
 A2 OF A2