

2813

TRACT NO. 11159
M. B. 225 - 38, 39

TRACT NO. 12

TRACT NO. 6068

TRACT NO. 19260
M. B. 594 - 34 - 36

TRACT NO. 1981B
M. B. 592 - 91 - 93

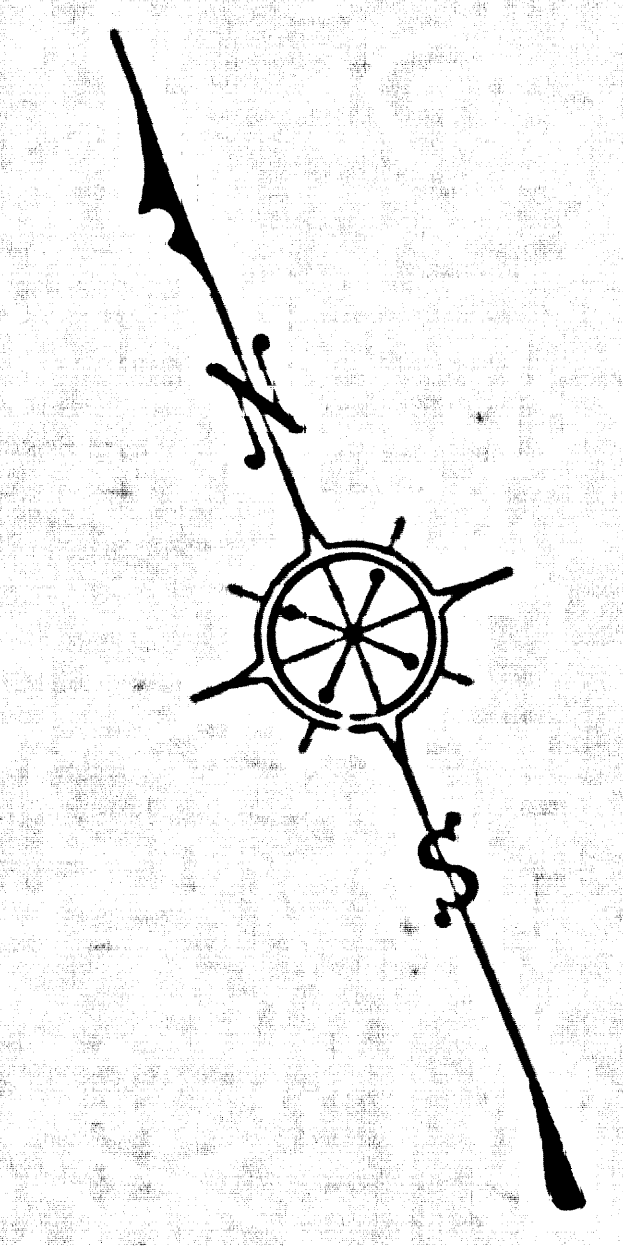
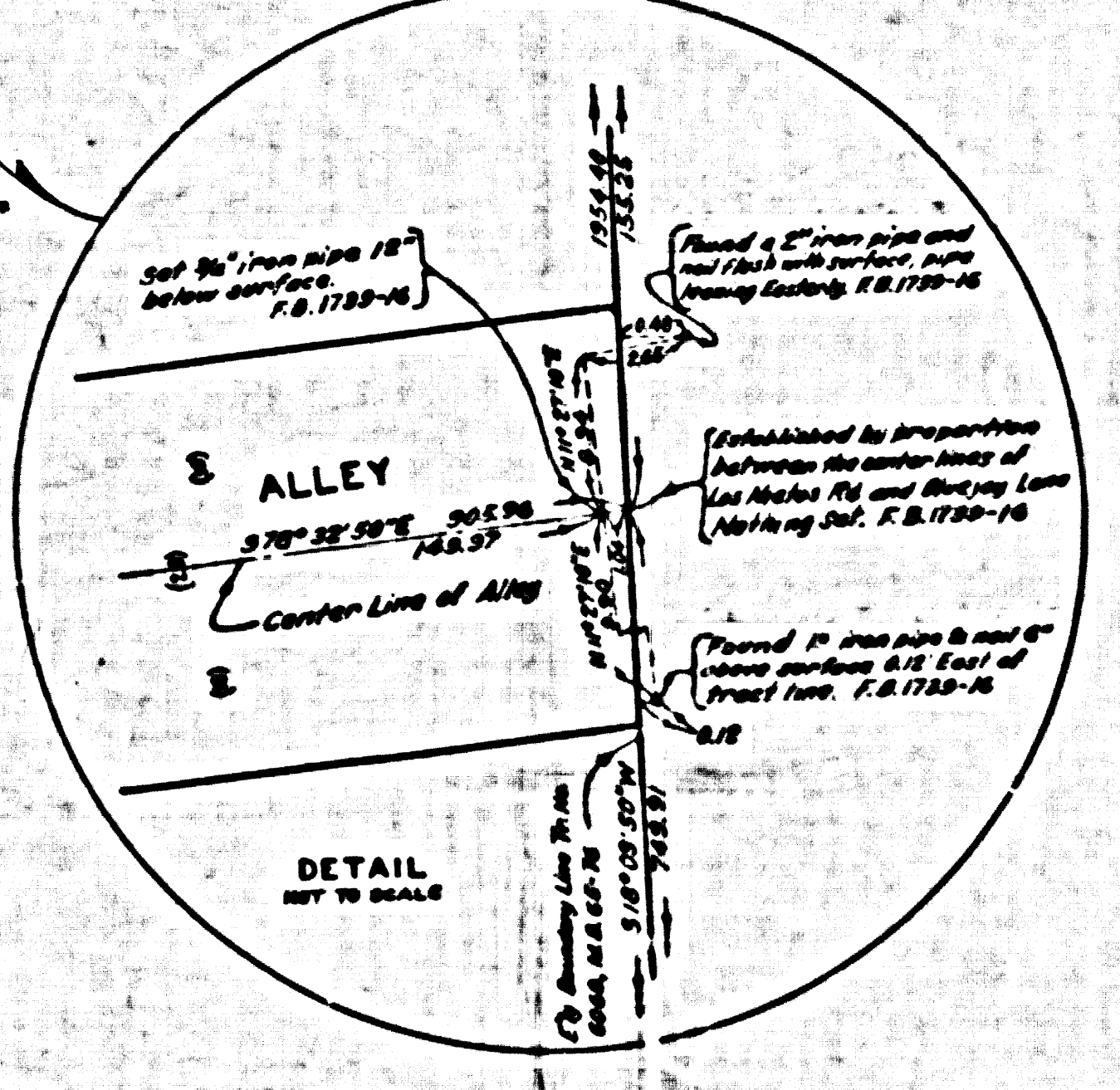
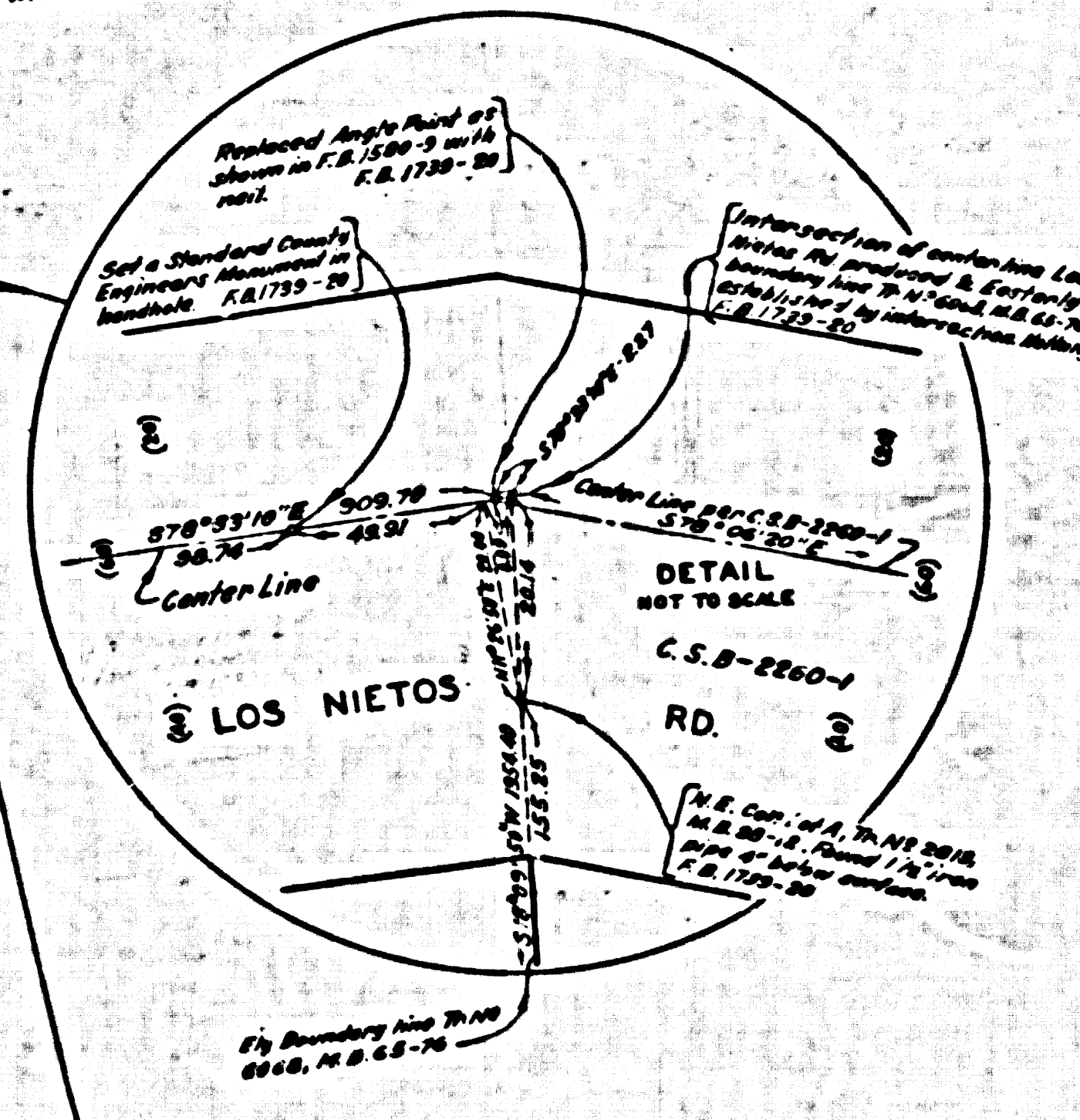
TRACT NO. 15649
M. B. 582 - 17

M. R. 1-502
C. S. 3445

TRACT NO. 3
C. S. 5313

TRACT NO. 1664
M. B. 22 - 10, 11

TRACT NO. 16908
M. B. 411 - 13, 14



COUNTY OF LOS ANGELES
MAP OF
STREETS IN THE DANBY AVENUE
SANITARY SEWER DISTRICT

COUNTY SURVEYORS MAP NO. B-2581
SCALE: 1 INCH = 100 FT.

JOB NUMBER 0303.00
JOHN A. LAMBIE-COUNTY ENGINEER
SURVEYED FEB.-MAR. 1952 & DEC. 1955
SURVEYED ON REQUEST OF THE COUNTY
ENGINEER UNDER AUTHORITY OF THE BOARD
SUPERVISORS BY ORDER DATED FEB. 29, 1948
BEARINGS ARE BASED ON THE BEARING
OF PIONEER BLVD. PER C.S.B. 2260-1.

F. B. 1739 - 5 - 22
FIELD WORK BY P. SNYDER
OFFICE WORK BY C. W. COX
ALGREEN
C. J. GALLI
CHECKED BY

NOTE: THIS SURVEY MADE TO ESTABLISH CENTER LINES
ON THE STREETS IN THIS AREA PRELIMINARY TO CON-
STRUCTION OF SEWERS IN THE DANBY AVE. SANITARY
SEWER DISTRICT. (C-1.1523)

NOTE: ALL STANDARD COUNTY ENGINEERS MONUMENTS
ARE 2" IRON PIPE SET IN CONCRETE WITH BRASS CAP
MARKED



HEET 33

Revised April, 1964

CSB-2581
A1 OF A1