

COUNTY OF LOS ANGELES
 MAP OF
**LOS ANGELES COUNTY
 FIRE STATION SITE
 NO. 100
 WEST NORWALK AREA**
 BEING
 A PORTION OF SW 1/4 OF SW 1/4 SEC. 12, T.3S, R.12W.
 IN THE RANCHO SANTA GERTRUDES SUBDIVIDED
 FOR THE SANTA GERTRUDES LAND ASSOCIATION
 M.R. 32-13

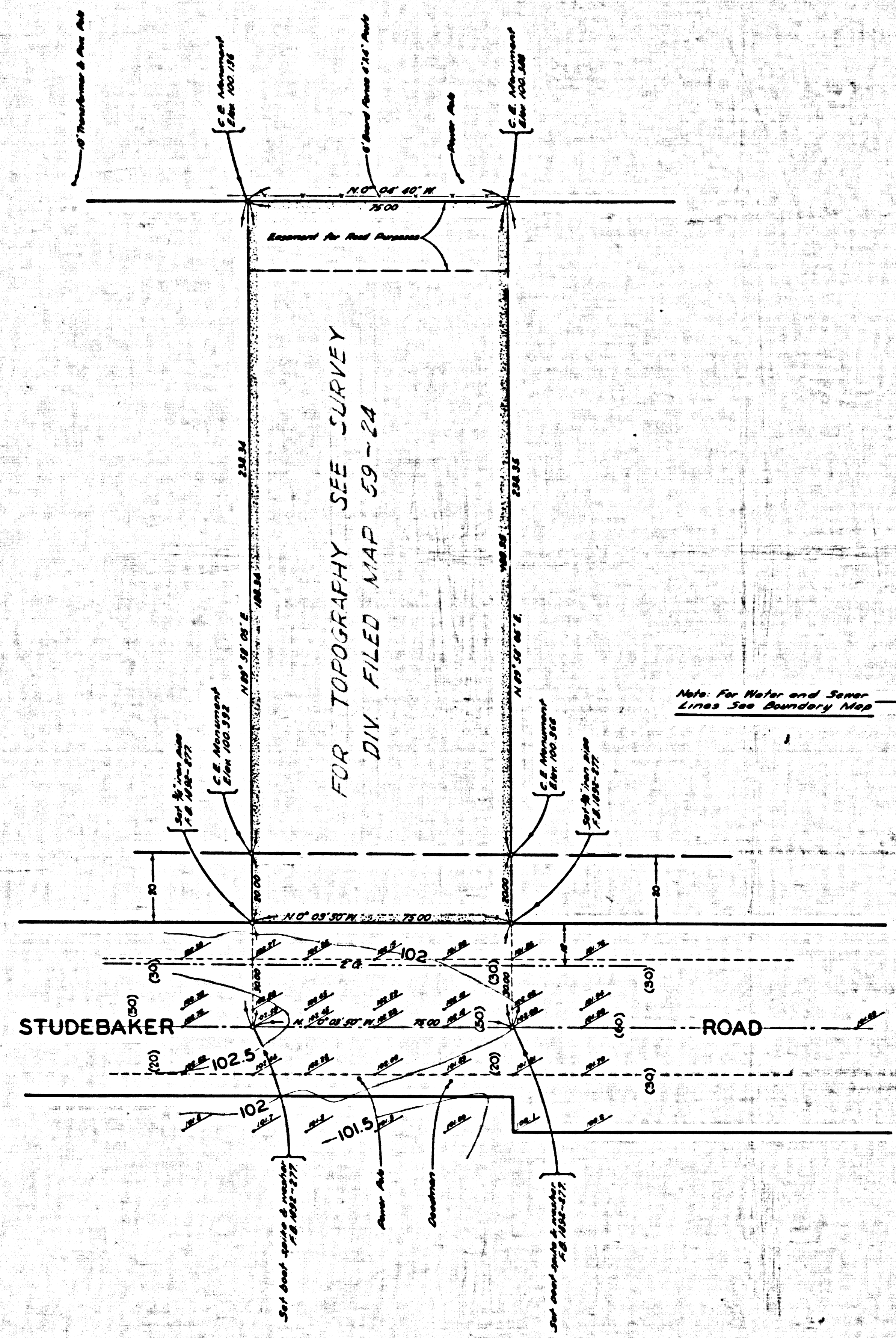
COUNTY SURVEYORS MAP NO. B-2583
 SCALE: 1 INCH = 50 FT.

JOB NUMBER 0801.59
 JOHN A. LAMBIE - COUNTY ENGINEER
 SURVEYED JUNE 1956
 SURVEYED ON REQUEST OF THE CHIEF ENGINEER
 COUNTY FIRE PROTECTION DISTRICTS
 UNDER SEC. 79, ORD. 4099, BY LETTER
 DATED MAY 9, 1956
 BEARINGS ARE BASED ON THE BEARING OF
 IMPERIAL HWY. PER C. S. B-753-2
 F.B. 1892-271-290

FIELD WORK BY J. S. COATES
 OFFICE WORK BY T. M. BURNS
 CHECKED BY C. J. GALLI
 / M 33

Revised April, 1964 - J.J.C.

CSB-2583
 A1 OF A2



MARGINAL MAP
SHOWING
TOPOGRAPHY
SCALE: 1 INCH = 20 FT.
FIELD WORK BY J.S. COATES
OFFICE WORK BY T.H. BURNS
CHECKED BY C.J. GALLI
F.B. 1692-271-298

