

SAN DIMAS BRANCH LIBRARY SITE
 AND

COUNTY OF LOS ANGELES
 MAP OF

**SITE FOR COUNTY ENGINEER'S
 REGIONAL OFFICE
 (SAN DIMAS)
 IN THE
 TOWN OF SAN DIMAS
 M.R. 16-53-54**

COUNTY SURVEYORS MAP NO. B-2584
 SCALE: 1 INCH = 50 FT.

JOB NUMBER 0021.50

JOHN A LAMBIE - COUNTY ENGINEER
 SURVEYED JUNE 1956 TO JULY 1956

SURVEYED ON REQUEST OF THE COUNTY
 ENGINEER UNDER SEC. 79, ORD. 4099
 BY LETTER DATED APRIL 24, 1956.

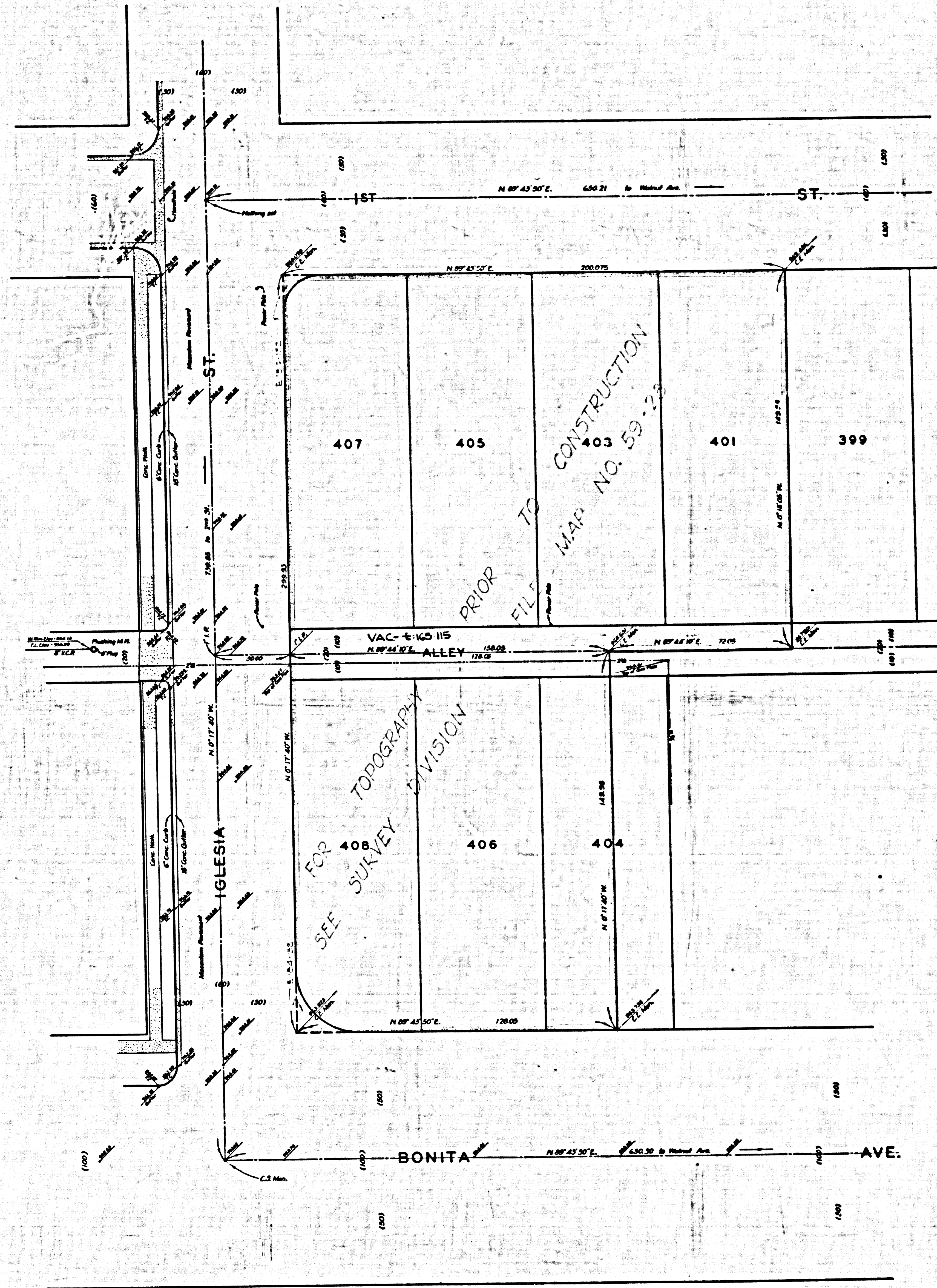
BEARINGS ARE BASED ON THE CALIFORNIA
 COORDINATE SYSTEM ZONE 2 PER ACT 8351
 GENERAL LAWS. SEE C.S. 9423

R.B. 1625-63-112

FIELD WORK BY J.M. DOUGHERTY L.M. 48
 OFFICE WORK BY S. SHIMODA
 CHECKED BY K.R. M'PHERSON
 C.J. GALLI

SURVEY OF SAN DIMAS BRANCH LIBRARY SITE ADDED
 MAY 1966, BY R. MANOR UNDER J.N. 0047.18.
 FOR TOPOGRAPHY OF SAN DIMAS BRANCH LIBRARY SITE,
 SEE SURVEY DIVISION FILE MAP NO. P.T. H-135.

Block bounded previously within unimproved First Street and West Alley north
 of First Street, Surveys 15, 148 B, by T.M. 1.



MARGINAL MAP
SHOWING
TOPOGRAPHY
SCALE: 1 INCH = 20 FT.

FIELD WORK BY: J.M. DOUGHERTY
OFFICE WORK BY: S. SHINODA
CHECKED BY: K.R. SPINERSON
C.J. GALLI

F.B. 1625-90-12

DA"UM - MEAN SEA LEVEL
ELEVATIONS SHOWN HEREON ARE BASED
ON THE 1929 U.S.C. & G.S. ADJUSTMENT OF
U.S.C. & G.S. BM 'V-35' (U.S. 228)

