

COUNTY OF LOS ANGELES
 MAP OF
**STREETS IN THE 127TH STREET, COOK
 STREET AND TOWNE AVENUE
 SANITARY SEWER DISTRICTS**
 COUNTY SURVEYORS MAP NO B-2588
 SCALE=1"=100 FT.

JOB NUMBER 8303.00
 JOHN A. LAMBIE - COUNTY ENGINEER
 SURVEYED JANUARY 1947 - JUNE 1950
 SURVEYED ON REQUEST OF THE COUNTY
 BOARD OF SUPERVISORS BY ORDER DATED
 FEBRUARY 26, 1946
 BEARINGS ARE BASED ON THE BEARING OF
 EL SEGUNDO BOULEVARD PER C.S.B. 120-1
 F.B. 1190-5-14; 229-237
 F.B. 1230-201-230
 FIELD WORK BY.....R.B. HOBSON
J.L. WILLEY
M.W. GUNDERSON
 OFFICE WORK BY.....C.W. COX
W.D. REYNOLDS
 CHECKED BY.....C.J. GALLS
J. Mc MILLAN

THIS SURVEY MADE TO ESTABLISH CENTER
 LINES ON THE STREETS IN THIS AREA
 PRELIMINARY TO CONSTRUCTION OF SEWERS
 IN THE SANITARY SEWER DISTRICTS
 COUNTY IMPROVEMENT NO. 1262, 1363
 AND 1366 RESPECTIVELY

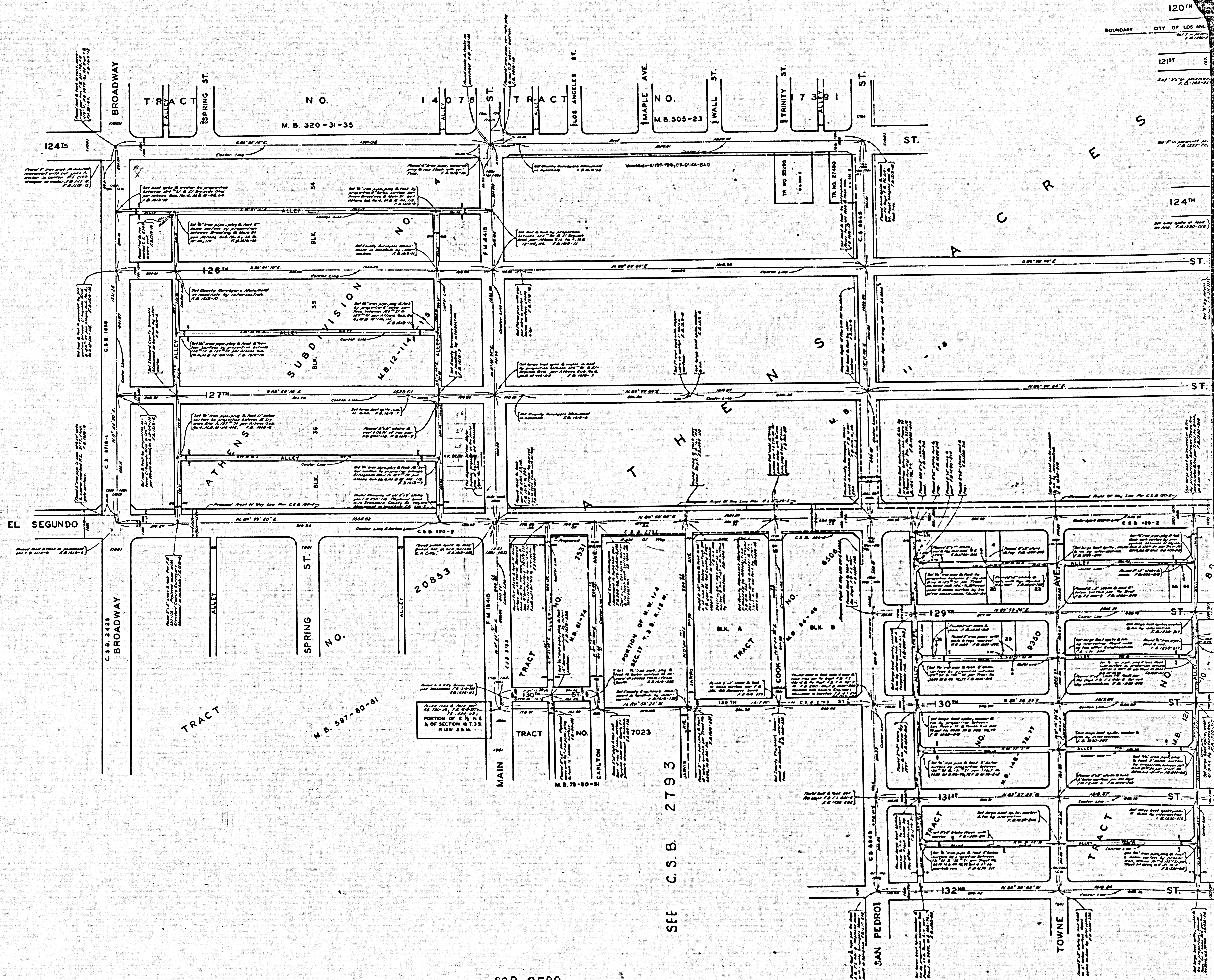
INDEX 26

ALL COUNTY SURVEYORS
 MONUMENTS ARE 2 INCH
 IRON PIPES SET IN CON-
 CRETE WITH BRASS CAPS
 UNLESS SHOWN
 OTHERWISE

ALL COUNTY ENGINEERS
 MONUMENTS ARE 2 INCH
 IRON PIPES SET IN CON-
 CRETE WITH BRASS CAPS
 UNLESS SHOWN
 OTHERWISE

Printed June 1952, 1:40
 Drawn May 1951, 6:15

CSB-2588
 A1 OF A2



CITY OF LOS ANGELES
120TH
121ST
124TH