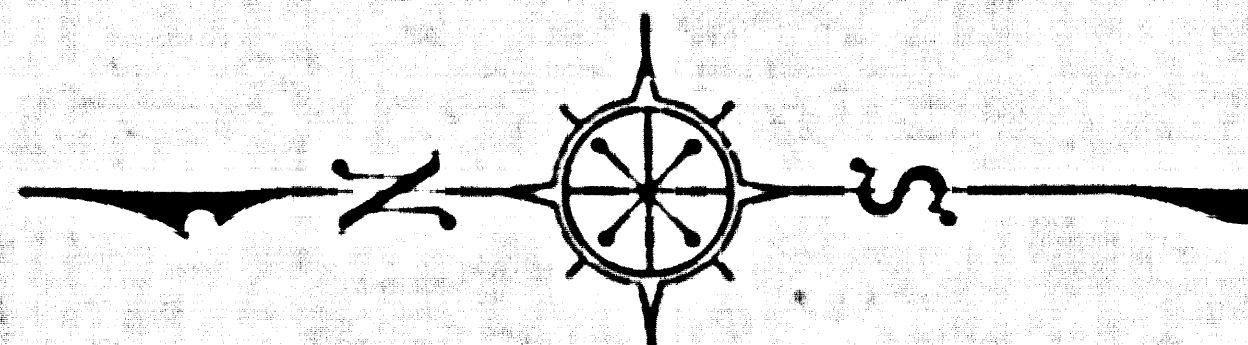
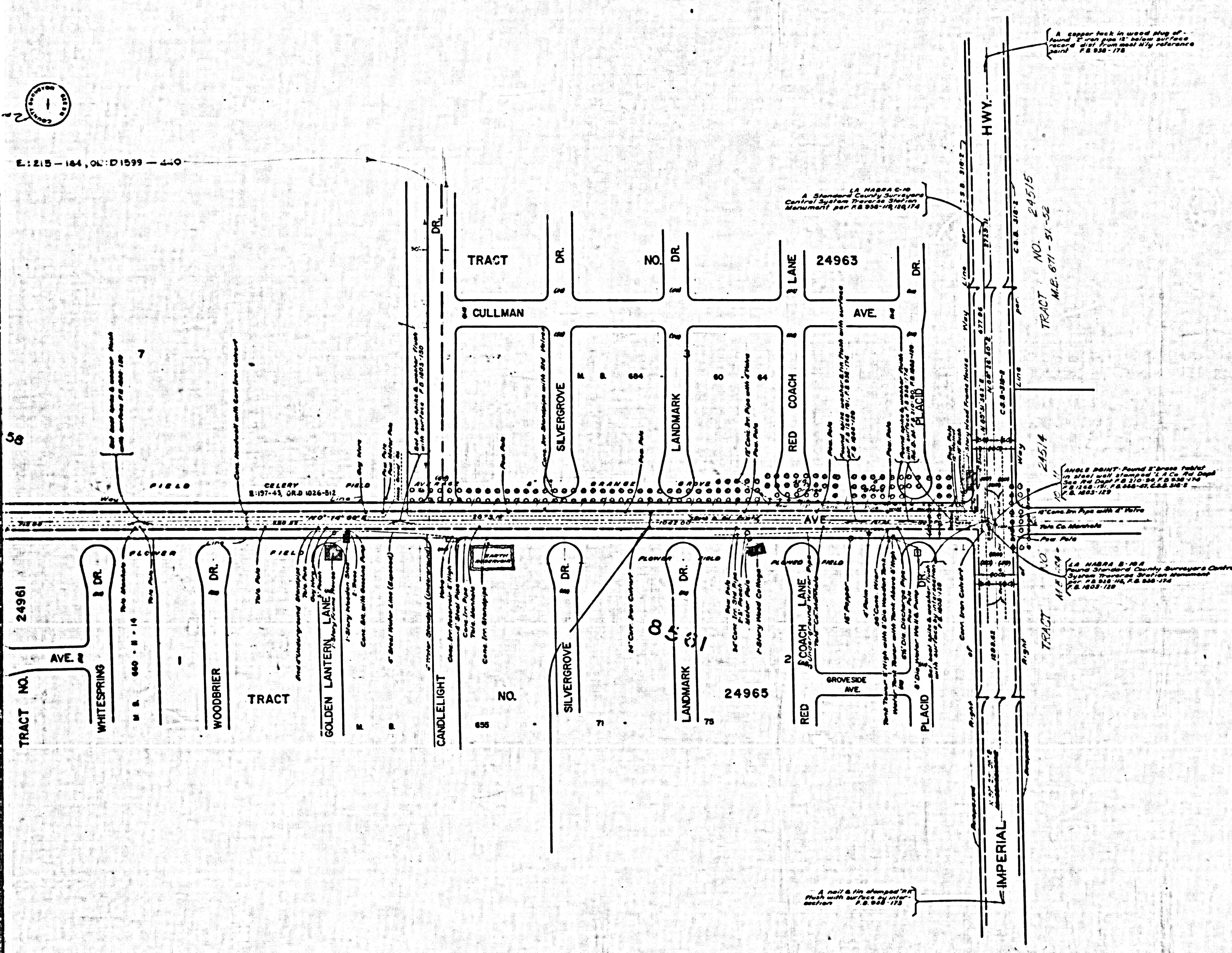


E: 215 - 144, O: D1599 - 440



COUNTY OF LOS ANGELES
 MAP OF
FIRST AVENUE
 FROM
IMPERIAL HIGHWAY
 TO
WHITTIER BOULEVARD
 COUNTY SURVEYORS MAP NO. B-2590
 SCALE: 1 INCH = 100 FT.

JOB NUMBER 0075.13
 JOHN A LAMBIE - COUNTY ENGINEER
 SURVEYED JAN. TO APRIL 1958
 SURVEYED ON REQUEST OF THE REGIONAL
 PLANNING COMMISSION UNDER SEC. 78,
 ORD. 4009, BY LETTER DATED DEC. 1, 1955
 AND BY BOARD ORDER DATED JUNE 18, 1942
 BEARINGS ARE BASED ON THE CALIFORNIA
 COORDINATE SYSTEM ZONE 7, PER ACT 8391
 GENERAL LAWS. SEE C.S. 8423
 P.B. 1803-125-208
 FIELD WORK BY.....M.E. GRANQUIST
 OFFICE WORK BY.....T.H. BURNS
 CHECKED BY.....S.O. HARRIS
S.H. MILLER
C.R. GOSS
 Revised July, 1964

INDEX 34

