

TRACT NO. 19352  
M.B. 489-19-21

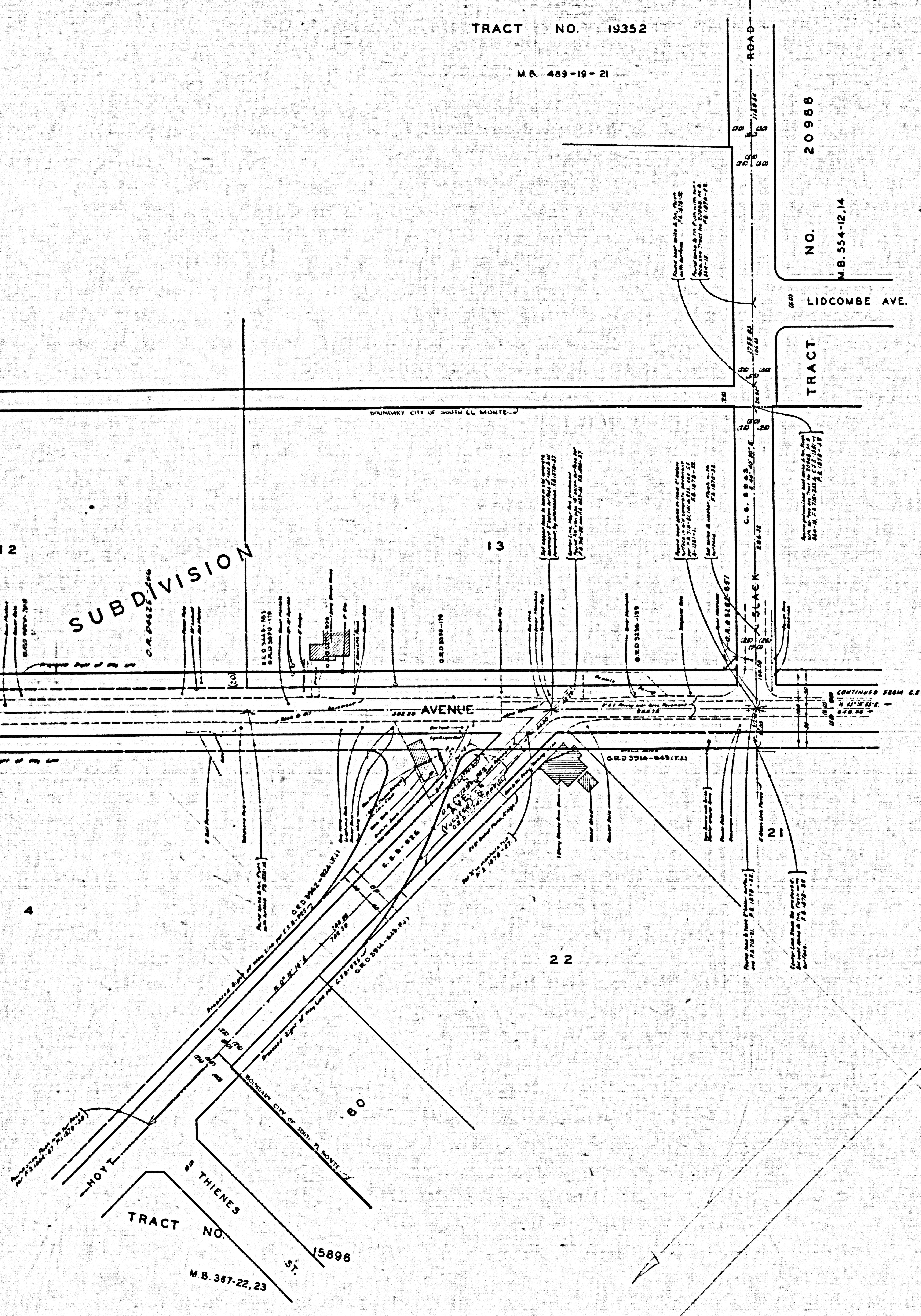
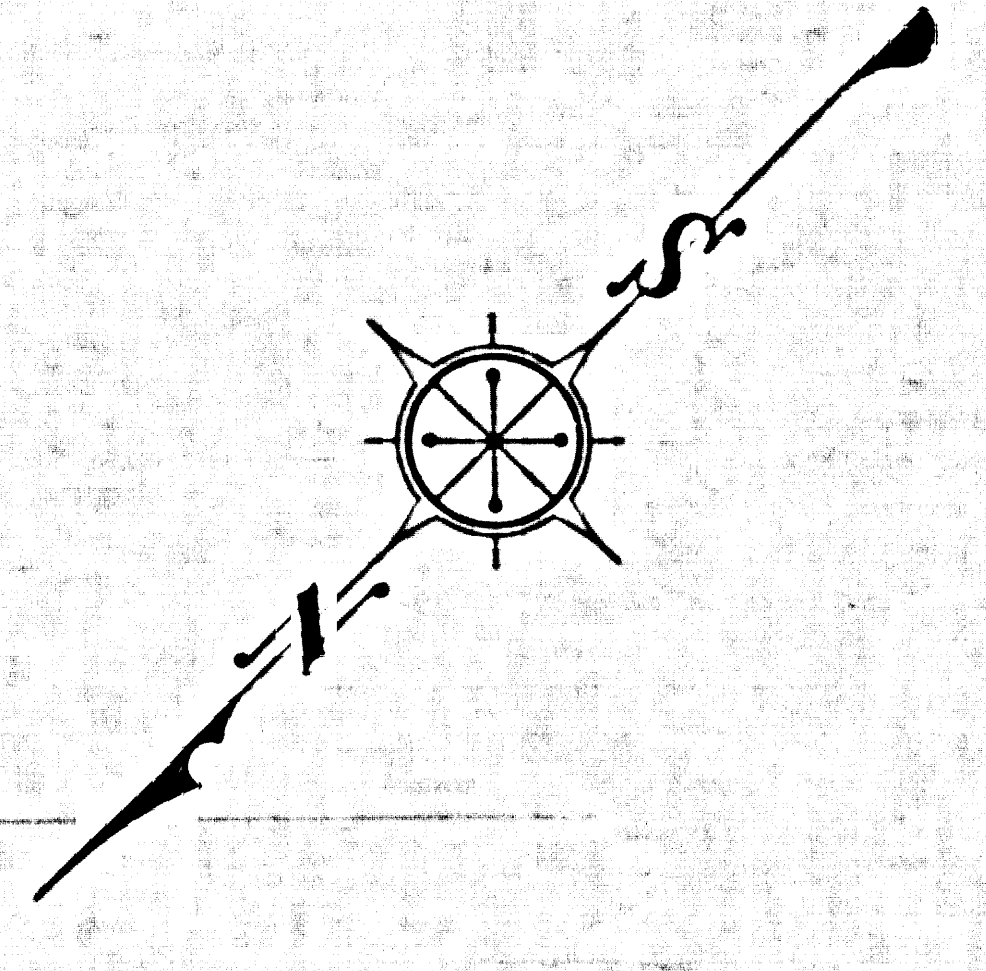
NO. 20988  
M.B. 554-12-14

TRACT

LIDCOMBE AVE.

SUBDIVISION

COUNTY OF LOS ANGELES  
MAP OF  
**TYLER AVENUE**  
FROM  
DURFEE AVENUE  
TO  
FINEVIEW STREET  
COUNTY SURVEYORS MAP NO. B 2591.  
SHEET NO. 2 OF 2 SHEETS  
SCALE: 1 INCH = 50 FEET



JCB NUMBER 0078.10  
JOHN A. LAMBIE - COUNTY ENGINEER  
SURVEYED DEC. 1955 - JULY 1959  
SURVEYED ON REQUEST OF THE REGIONAL  
PLANNING COMMISSION UNDER SECTION  
79, ORD. 4099 BY LETTER DATED NOVEMBER 19,  
1955 & BY BOARD ORDER DATED DECEMBER 11, 1955  
BEARINGS ARE BASED ON THE CALIFORNIA  
COORDINATE SYSTEM ZONE 7, PER ACT 8351  
GENERAL LAWS SEE C.S. 9423  
F.B. 1878-25-100, 151-170  
FIELD WORK BY H. E. GRANQUIST  
D. E. HOLMES  
OFFICE WORK BY T. M. ICHTEN  
CHECKED BY J. AJA  
INDEX 37  
Revised June, 1964 - - - - -

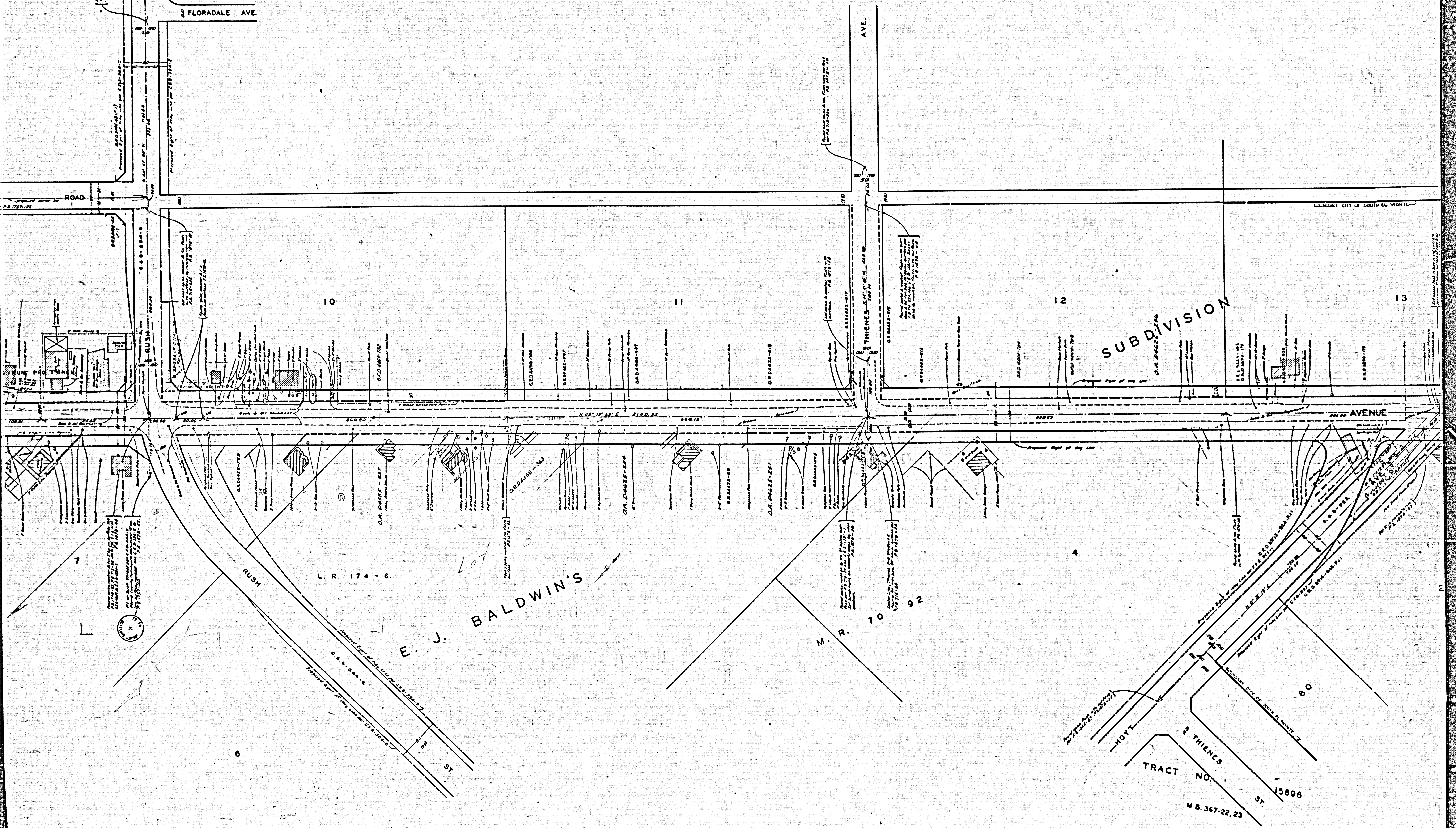
CSB-2591-2  
A1 OF A3



COGSWELL RD.  
TRACT NO. 11333  
M.B. 208-4,5  
FLORADALE AVE.

TRACT

M.B.



SUBDIVISION

E. J. BALDWIN'S

TRACT NO. 15896  
M.B. 367-22, 23

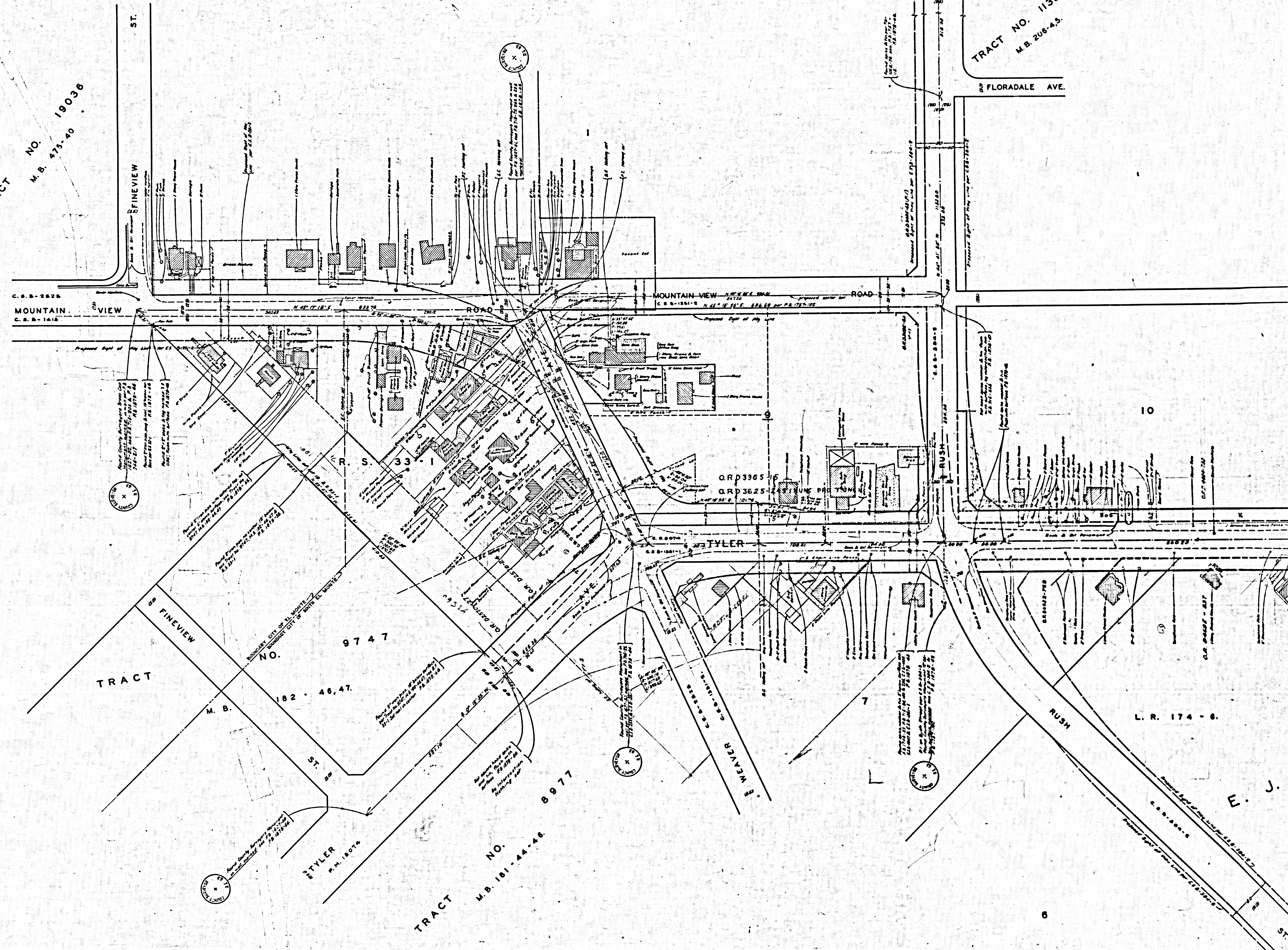
CSB-2591-2  
A2 OF A3



COMMONLY SHOWN AS TRACT NO. 19036

TRACT NO. 19036  
M.B. 475-40

COGSWELL RD.  
TRACT NO. 11333  
M.B. 206-45  
FLORADALE AVE.



C.S.B.-2826  
MOUNTAIN VIEW  
C.S.B.-1818

TRACT NO. 9747  
M.B. 182-46, 47

TRACT NO. 8977  
M.B. 181-44-46

ORD 3365  
ORD 3625

L.R. 174-6

CSB-2591-2  
A3 OF A3

SHEET NO. 5 OF 5 SHEETS  
COMMONLY SHOWN AS TRACT NO. B-572