

COUNTY OF LOS ANGELES
 MAP OF
~~LOS ANGELES COUNTY FIRE~~
~~STATION SITE NO. 101~~
 AND
 LOS ANGELES COUNTY ROAD
 DEPARTMENT MAINTENANCE YARD
 (ROAD DISTRICT NO. 302)
 BEING A PORTION OF LOTS 91 & 110
 TRACT NO. 1, CLERKS FILED MAP
 NO. 880 (EXHIBIT 'A') S.C.C. NO. B-25296

COUNTY SURVEYORS MAP NO. B-2592
 SCALE 1 INCH = 50 FT.

JOB NUMBERS 0801.61 & 0778.48
 JOHN A. LAMBIE - COUNTY ENGINEER
 SURVEYED - SEPT., 1956

SURVEYED ON REQUEST OF THE CHIEF ENGINEER
 COUNTY FIRE PROTECTION DISTRICTS UNDER
 SEC. 79, ORD. 4099 BY LETTER DATED AUG. 7,
 1956 AND ROAD COMMISSIONER UNDER SEC. 79,
 ORD. 4099 BY LETTER DATED AUG. 22, 1956.

BEARINGS ARE BASED ON THE CENTER LINE
 OF BANDINI BLVD. N67°37'49"W AS SHOWN ON
 CALIFORNIA STATE HIGHWAY DIVISION VII L.A.
 MAP NO. 187 B.

F. B. 1895 - 75 - 90
 FIELD WORK BY J. DOUGHERTY
 OFFICE WORK BY R. L. GREEN
 CHECKED BY J. A. J.

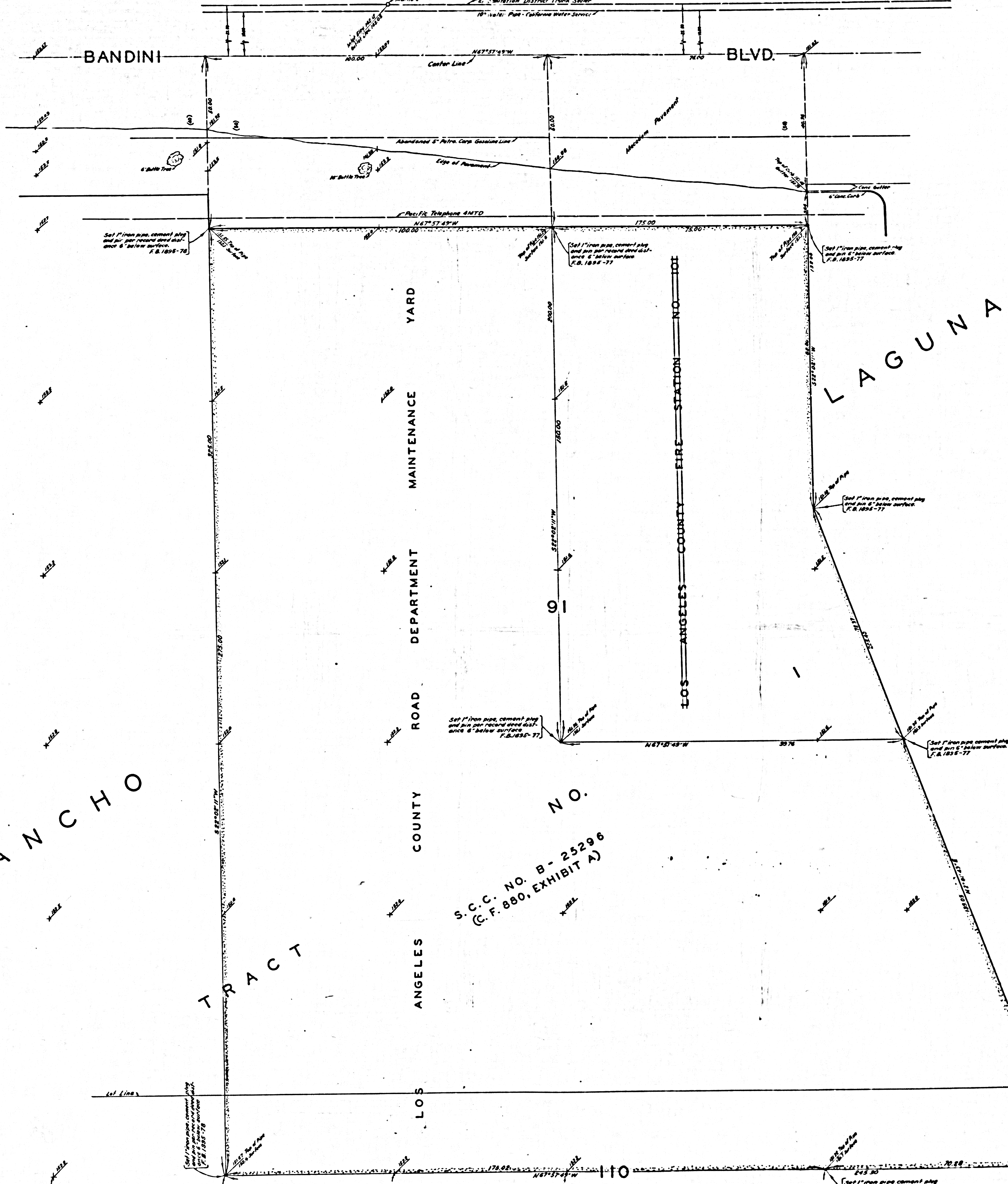
I. M. N° 77
 A PORTION OF THIS MAP HAS BEEN
 ABANDONED FOR FIRE STATION PURPOSES

RANCHO

TRACT

LOS ANGELES COUNTY ROAD DEPARTMENT MAINTENANCE YARD

CSB-2592
A2 OF A2



FREEWAY

BEACH

MARGINAL MAP
SHOWING
TOPOGRAPHY
SCALE: 1 INCH = 10 FT.

FIELD WORK BY J. DOUGHERTY
OFFICE WORK BY R.L. GREEN
CHECKED BY J.A.J.A.

