

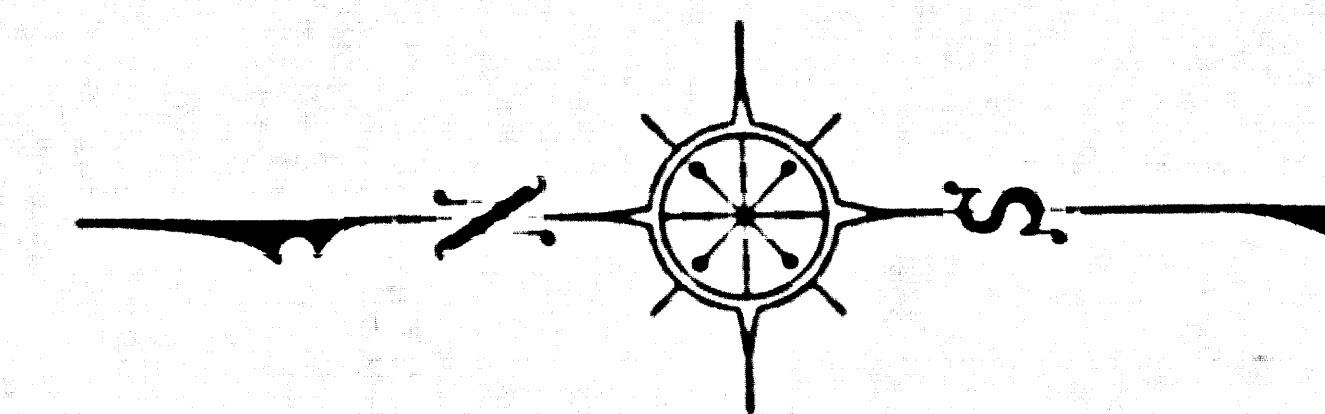
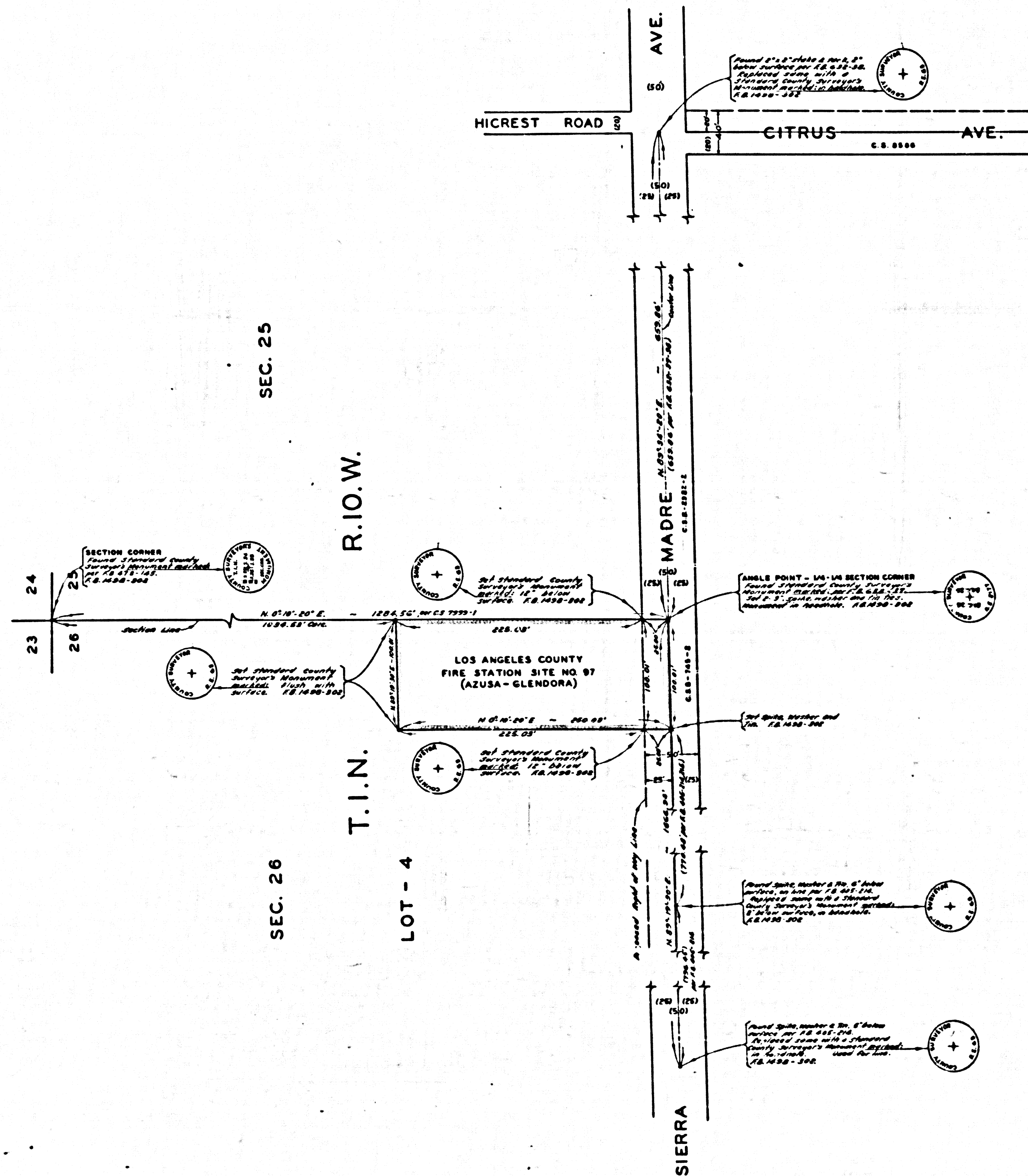
MARGINAL MAP  
SHOWING  
TOPOGRAPHY

SCALE - 1 INCH = 20 FT.

FIELD WORK BY... R. B. HOBSON  
OFFICE WORK BY... G. D. BAILEY  
T. M. PALMERI  
CHECKED BY... J. A. J. A.

PLANE TABLE SHEET F-465

DATUM - MEAN SEA LEVEL  
ELEVATIONS SHOWN HEREON ARE BASED ON THE U.S.C.G.S.  
SEA LEVEL DATUM OF 1929 ELEVATION OF U.S.C.G.S. S. W.  
"6-70-1929" (U.S. 6033)



COUNTY OF LOS ANGELES  
MAP OF  
**LOS ANGELES COUNTY  
FIRE STATION SITE  
NO. 97  
AZUSA - GLENDORA**  
BEING  
A PORTION OF LOT 4  
IN THE N.E. 1/4 OF FRACTIONAL  
SECTION 26, T.10.N. - R.10.W.

COUNTY SURVEYORS MAP NO. B-2593  
SCALE - 1 INCH = 50 FT.

JOB NUMBER 0038.02

JOHN A. LAMBIE - COUNTY ENGINEER  
SURVEYED JANUARY 1955

SURVEYED ON REQUEST OF THE COUNTY  
ENGINEER UNDER SEC. 79, ORD. 4089  
BY LETTER DATED JANUARY 6, 1955.

BEARINGS ARE BASED ON THE BEARING OF  
SIERRA MADRE AVE. AS SHOWN ON CSB-765-E

F.B. 1498-301-325

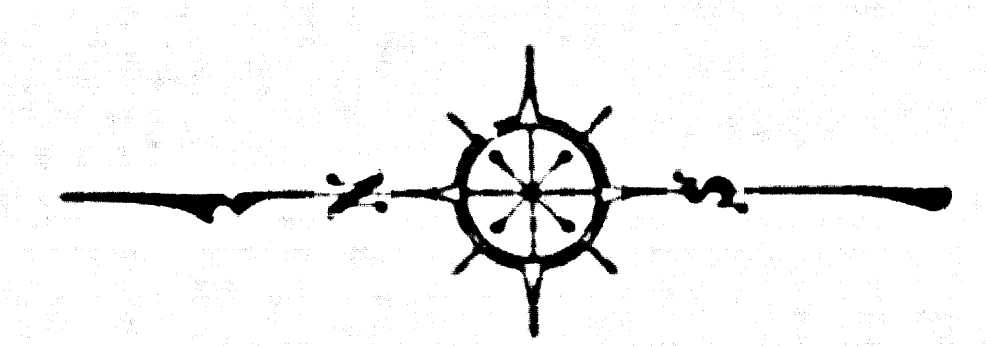
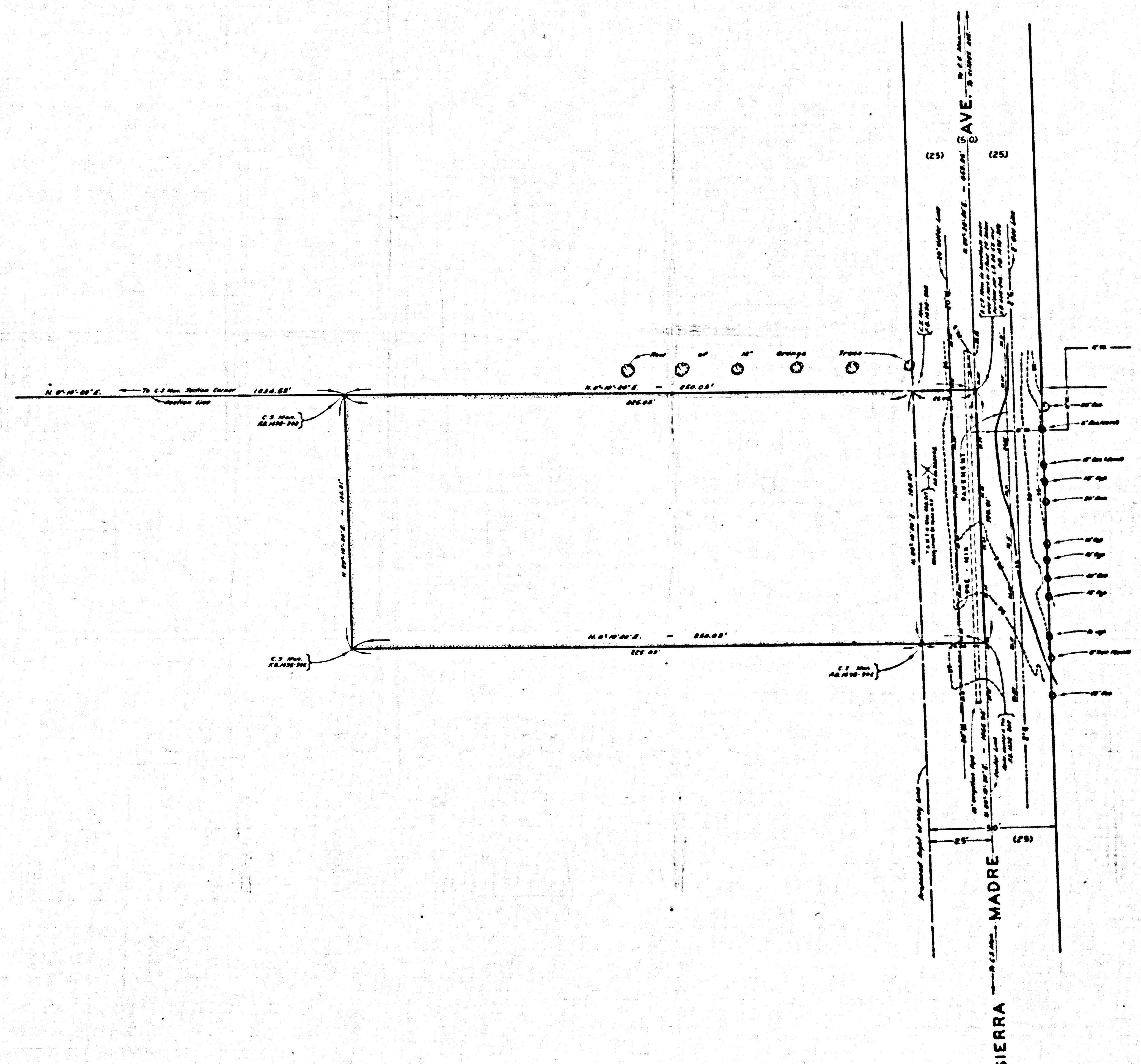
FIELD WORK BY... D. E. HOLMES  
OFFICE WORK BY... G. D. BAILEY  
T. M. PALMERI  
CHECKED BY... J. A. J. A.

INDEX - 47

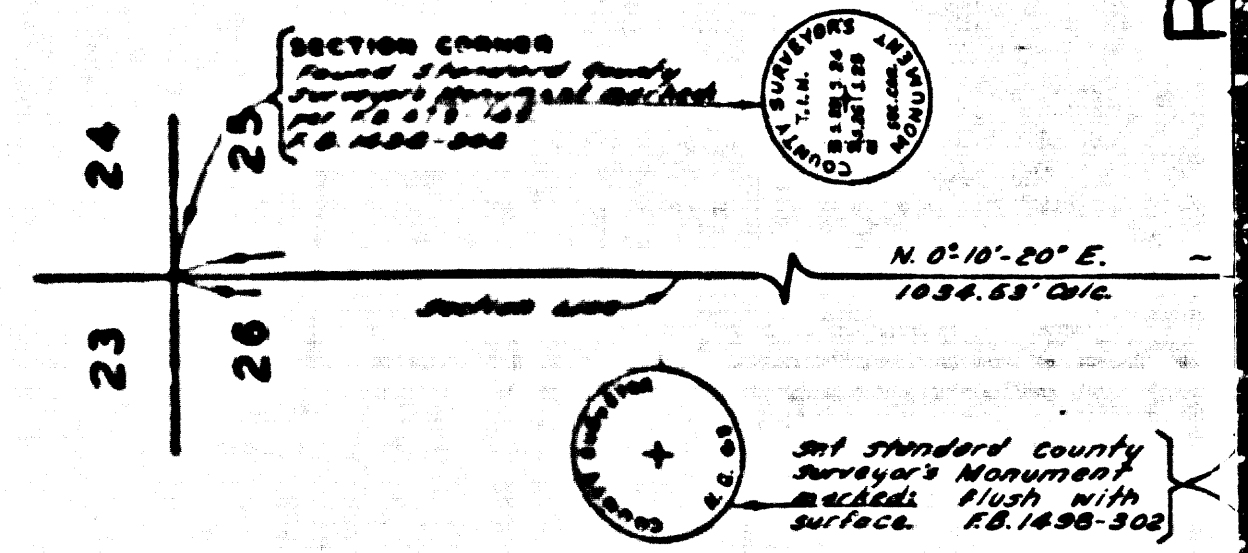
CSB-2593  
A1 OF A2

COMILA SURVEYORS M.V.B. NO. B-5283

COMILA SURVEYORS M.V.B. NO. B-5283



MARGINAL MAP  
 SHOWING  
 TOPOGRAPHY  
 SCALE - 1 INCH = 20 FT.  
 FIELD WORK BY... R.B. HOBSON  
 OFFICE WORK BY... G.D. BAILEY  
 T.M. PALMERI  
 CHECKED BY... J.A.J.A.  
 PLANE TABLE SHEET P-400  
 DATUM - MEAN SEA LEVEL  
 ELEVATIONS SHOWN HEREON ARE BASED ON THE DECADE  
 SEA LEVEL DATUM OF 1929. ELEVATION OF U.S.C.G.S. B.M.  
 "G-10-1004" IS 0 82.00



CSB-2593  
A2 OF A2

SEC. 25

SEC. 26

TIN R I O W