

COUNTY OF LOS ANGELES
 MAP OF
**BELL GARDENS
 HEALTH CENTER**
 BEING A PORTION OF ANDREA
 BALLESTEROS DE LUGO TRACT
 M.R. 37-21 AND ALSO SHOWN ON
 R.S. 37-6

COUNTY SURVEYORS MAP NO. B-2597
 SCALE 1 INCH = 50 FT.

JOB NUMBER 004004

JOHN A. LAMBIE-COUNTY ENGINEER
 SURVEYED, OCT. 1956

SURVEYED UNDER INSTRUCTIONS OF THE
 BOARD OF SUPERVISORS PER ORDER DATED
 SEPT. 14, 1956.

BEARINGS ARE BASED ON THE BEARING OF
 OF EASTERN AVE. PER C.S.B-149-1.

F.S. 2248-7-20

FIELD WORK BY A.S. CURTIS
 OFFICE WORK BY R.L. GREEN
 CHECKED BY J. GALLI

INDEX 56(A-5)

R. S. 37 - 6

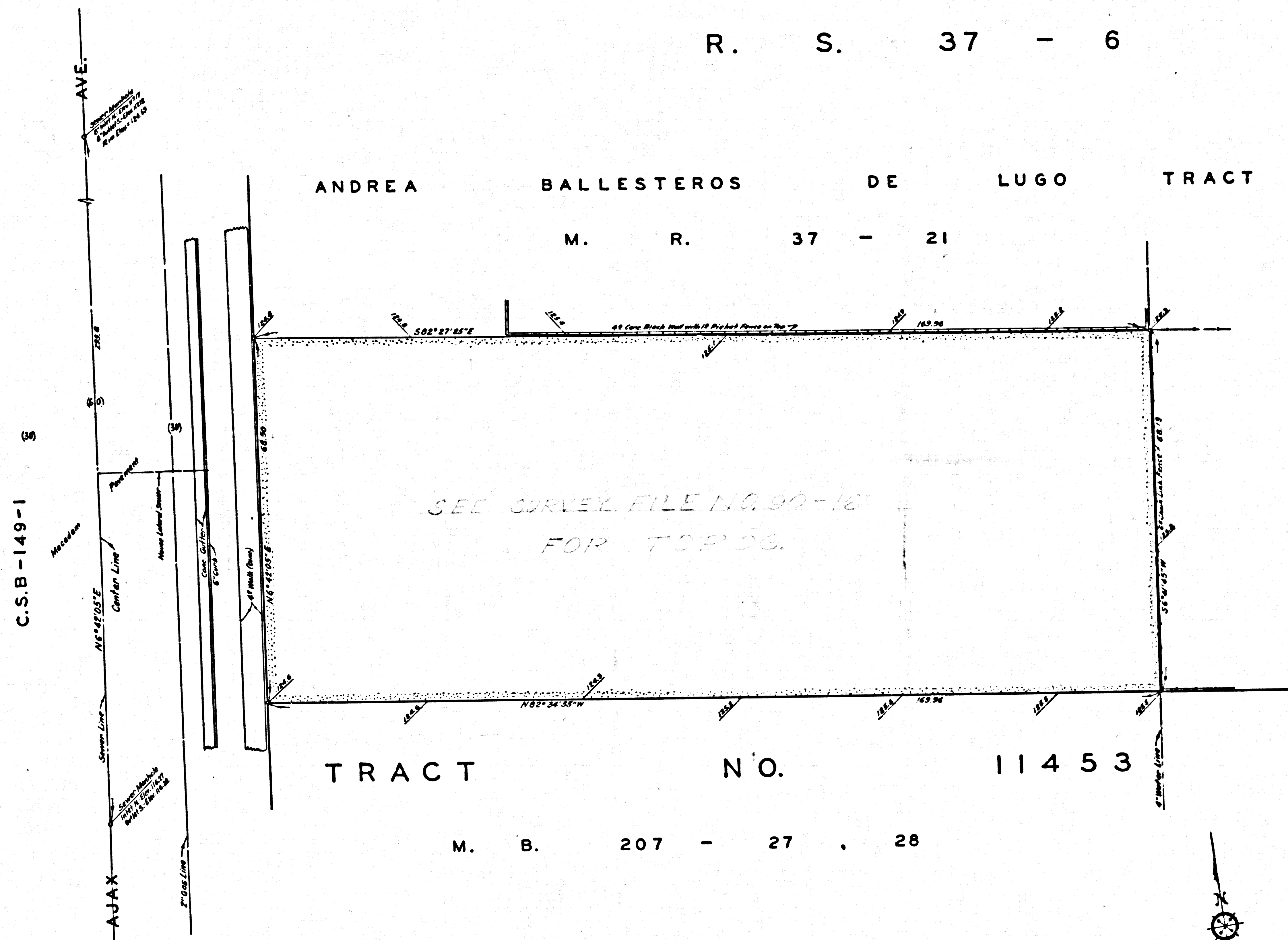
ANDREA BALLESTEROS DE LUGO TRACT

M. R. 37 - 21

SEE SURVEY FILE NO. 90-10 FOR TOPOG.

TRACT NO. 11453

M. B. 207 - 27 . 28



MARGINAL MAP SHOWING TOPOGRAPHY

SCALE: 1 INCH = 10 FT.

FIELD WORK BY A.S. CURTIS
OFFICE WORK BY R.L. GREEN
CHECKED BY J. GALLI

F.B. 2240-T-20
DATUM - MEAN SEA LEVEL
ELEVATIONS SHOWN HEREON ARE BASED UPON B.M. 122 (F.B. 105-10) THE ELEVATION OF WHICH WAS DETERMINED FROM U.S.C. & G.S. B.M. 70-33 (U.S. 3-37) BASED U.S.C. & G.S. ADJUSTMENT OF 1924 (F.B. 840-18)

LUBEC

SAVE

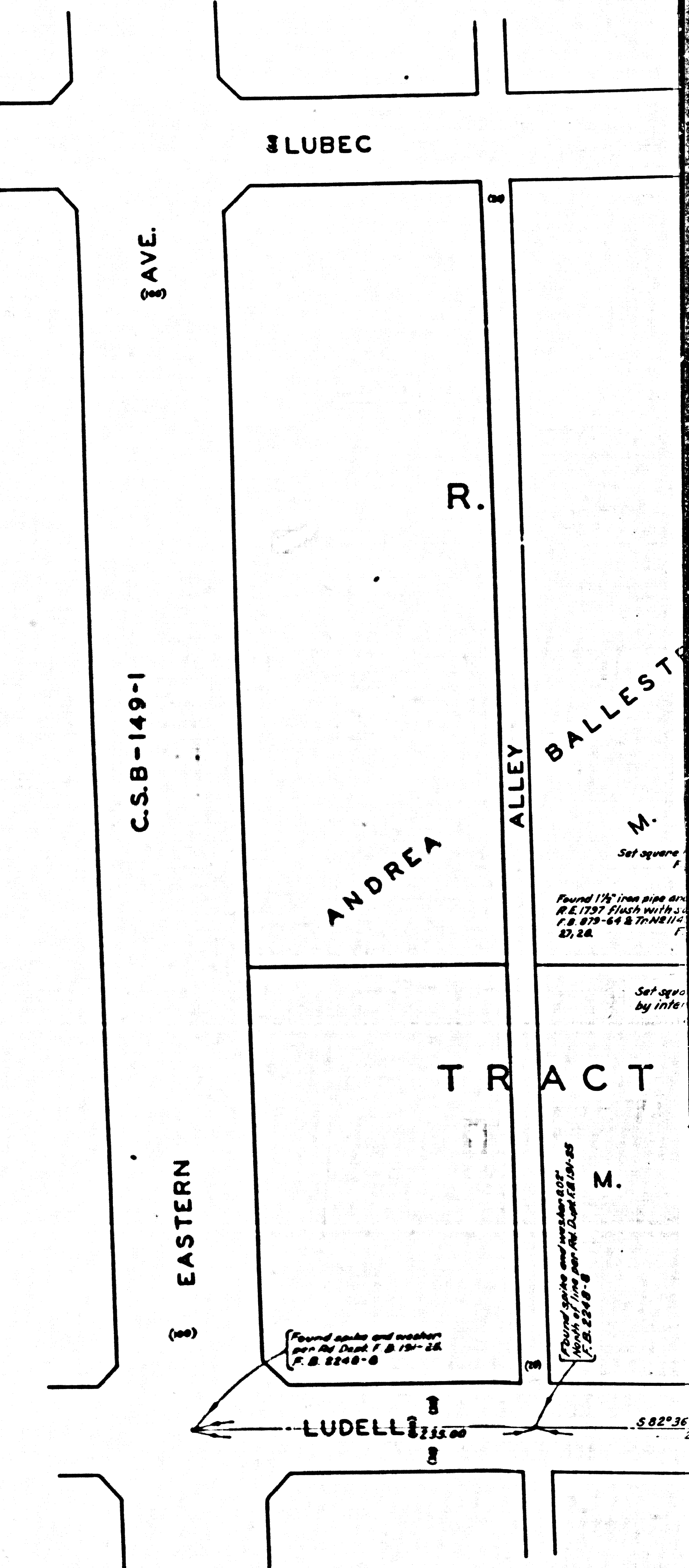
C.S.B-149-1

EASTERN

LUDELL

ANDREA BALLESTEROS DE LUGO TRACT

TRACT



CSB-2597
A2 of A2