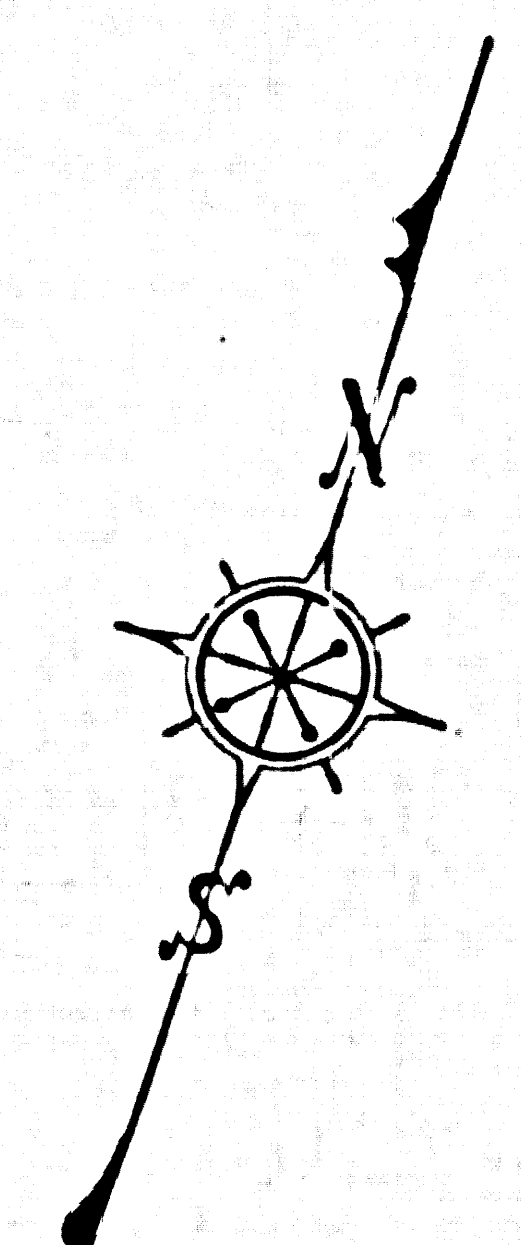
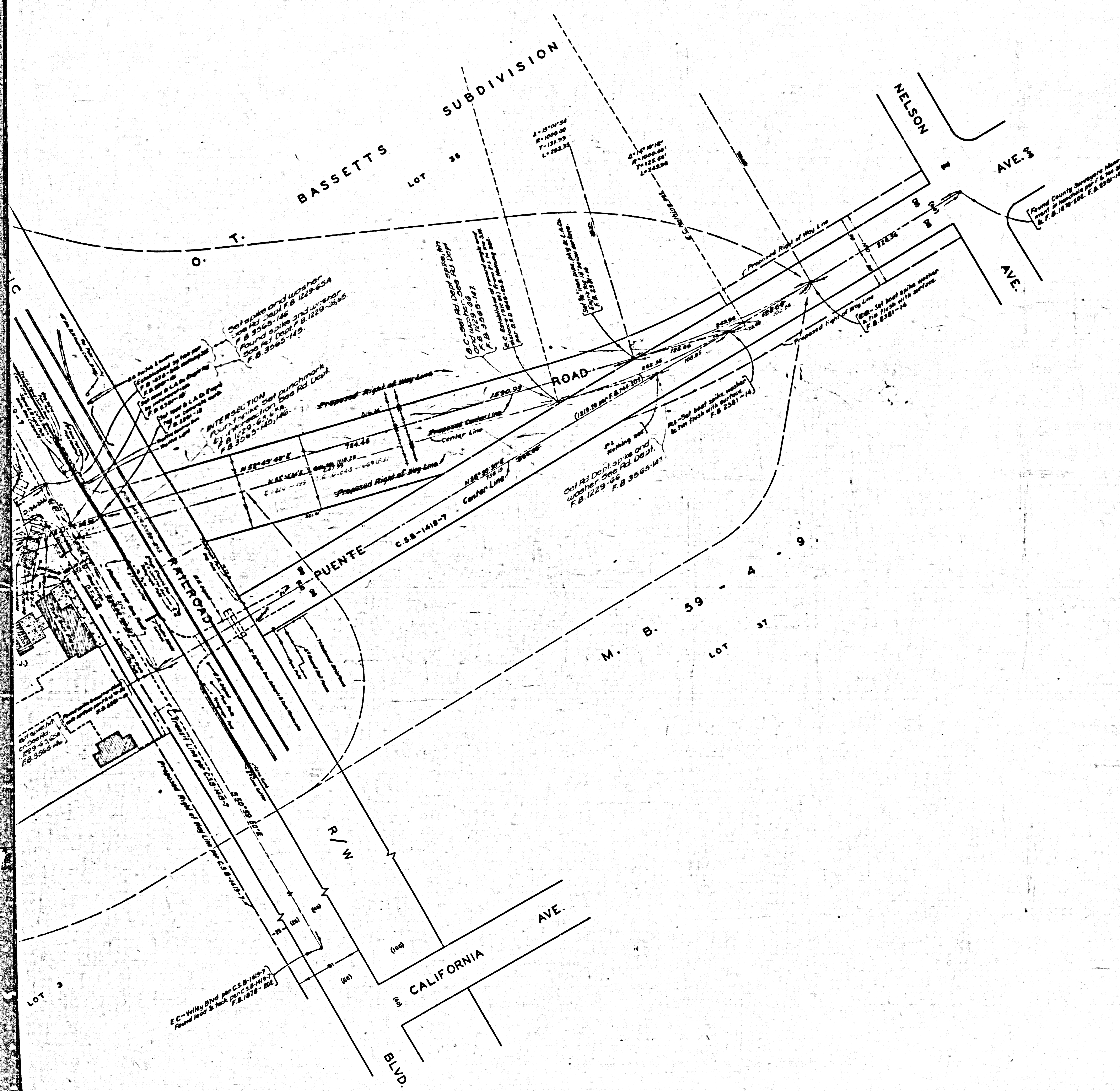


1 ON SAN FRANCISCO YTMUOC
2 5 TO 1 ON THEE



COUNTY OF LOS ANGELES
 MAP OF
WORKMAN MILL ROAD
 FROM
 NELSON AVENUE
 TO
 PROCTOR AVENUE
 COUNTY SURVEYORS MAP NO. B-2605
 SHEET NO. 1 OF 2 SHEETS
 SCALE: 1 INCH = 50 FT.

JOB NUMBER 0074-99
 JOHN A. LAMBIE - COUNTY ENGINEER
 SURVEYED - 1958
 SURVEYED ON REQUEST OF THE REGIONAL
 PLANNING COMMISSION UNDER SEC. 79,
 ORD. 4699 BY LETTER DATED FEB. 21, 1958
 AND BY BOARD ORDER DATED DEC. 11, 1958
 BEARINGS ARE BASED ON THE CALIFORNIA
 COORDINATE SYSTEM ZONE 1, PER SEC. 8609
 PUBLIC RESOURCES CODE SEE C.S. 9423

F. & 238 - 8 - 24
 FIELD WORK BY C.R. LIND
 OFFICE WORK BY R.L. GREEN
 CHECKED BY W.J. BRENNER

37 & 46
 Revised R/W - 3-18-59
 Alignment revised Dec. 1964 by R.L. Green
 Approved for Record by R.L. Green on 12-28-1964
 Approved for Record by W.J. Brenner on 1-28-1977

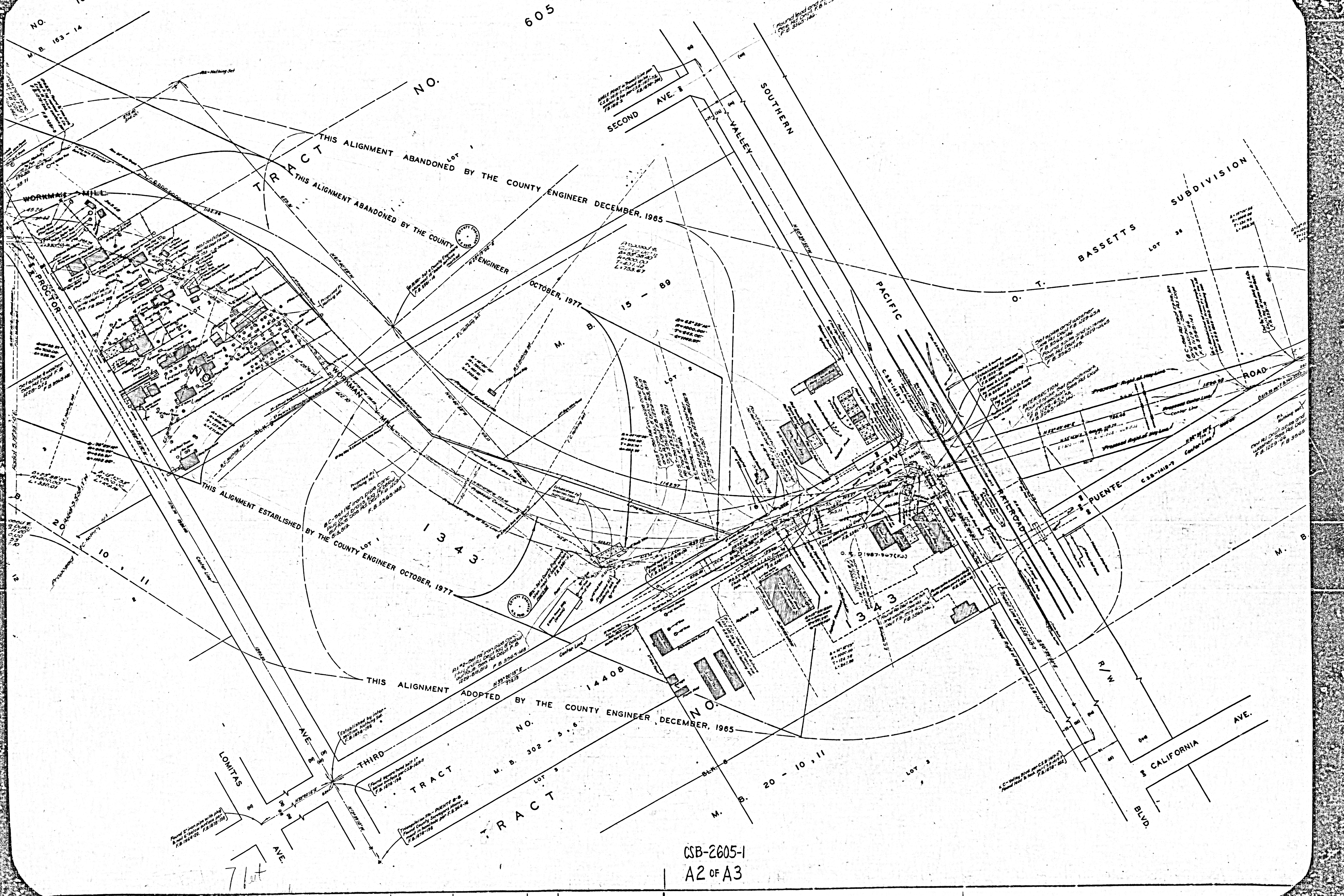
SHEET NO. 1 OF 2 SHEETS
COUNTY SURVEYORS MAP NO. B-2605

CSB-26051
A1 OF A3

East 7 feet

NO. 10588
M. B. 163-14

605



TRACT
 THIS ALIGNMENT ADOPTED BY THE COUNTY ENGINEER DECEMBER, 1965
 THIS ALIGNMENT ADOPTED BY THE COUNTY ENGINEER DECEMBER, 1965
 THIS ALIGNMENT ESTABLISHED BY THE COUNTY ENGINEER OCTOBER, 1977

TRACT
 THIS ALIGNMENT ESTABLISHED BY THE COUNTY ENGINEER OCTOBER, 1977
 THIS ALIGNMENT ESTABLISHED BY THE COUNTY ENGINEER OCTOBER, 1977

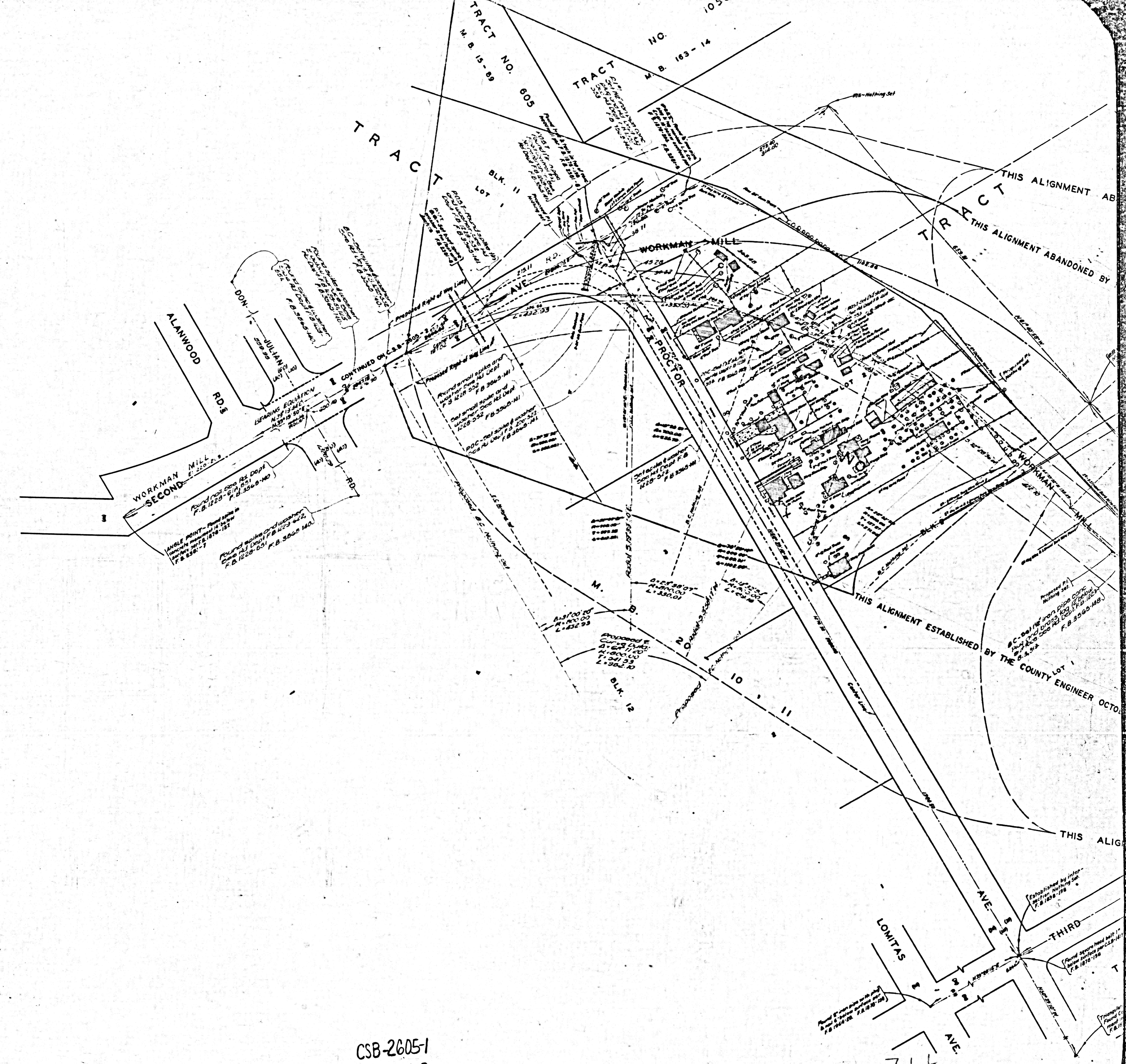
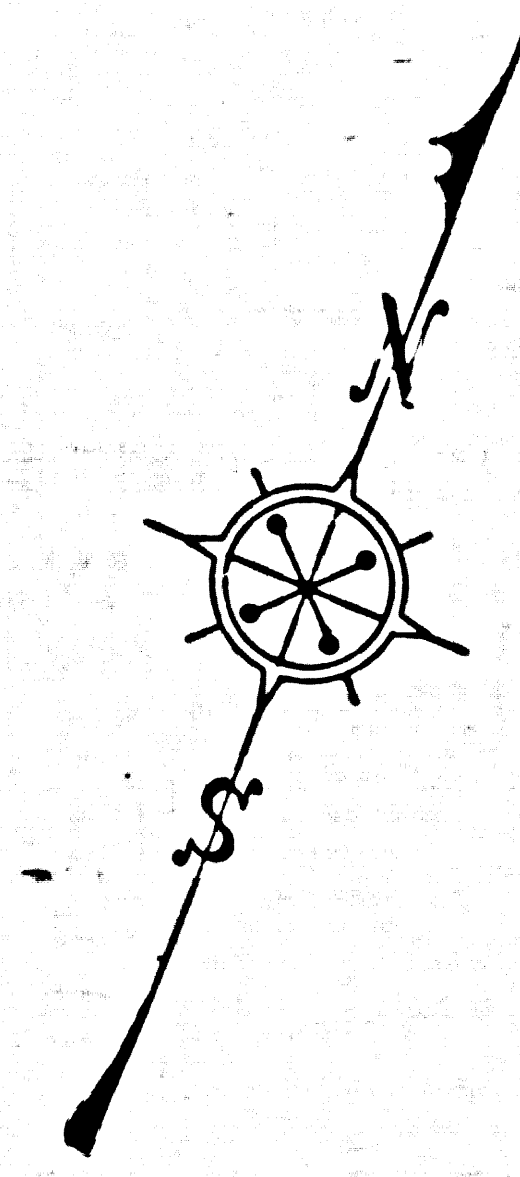
TRACT
 THIS ALIGNMENT ADOPTED BY THE COUNTY ENGINEER DECEMBER, 1965
 THIS ALIGNMENT ADOPTED BY THE COUNTY ENGINEER DECEMBER, 1965

CSB-2605-1
 A2 OF A3

7/14

2605-B-10 PLAN SUPERVISOR YVONUE
SHEETS 5 OF 1 ON THIS SHEET

SHEET NO. 1 OF 5 SHEETS
CONSULT ENGINEER W.H. NO. B-5402



CSB-2605-1
A3 of A3

714