

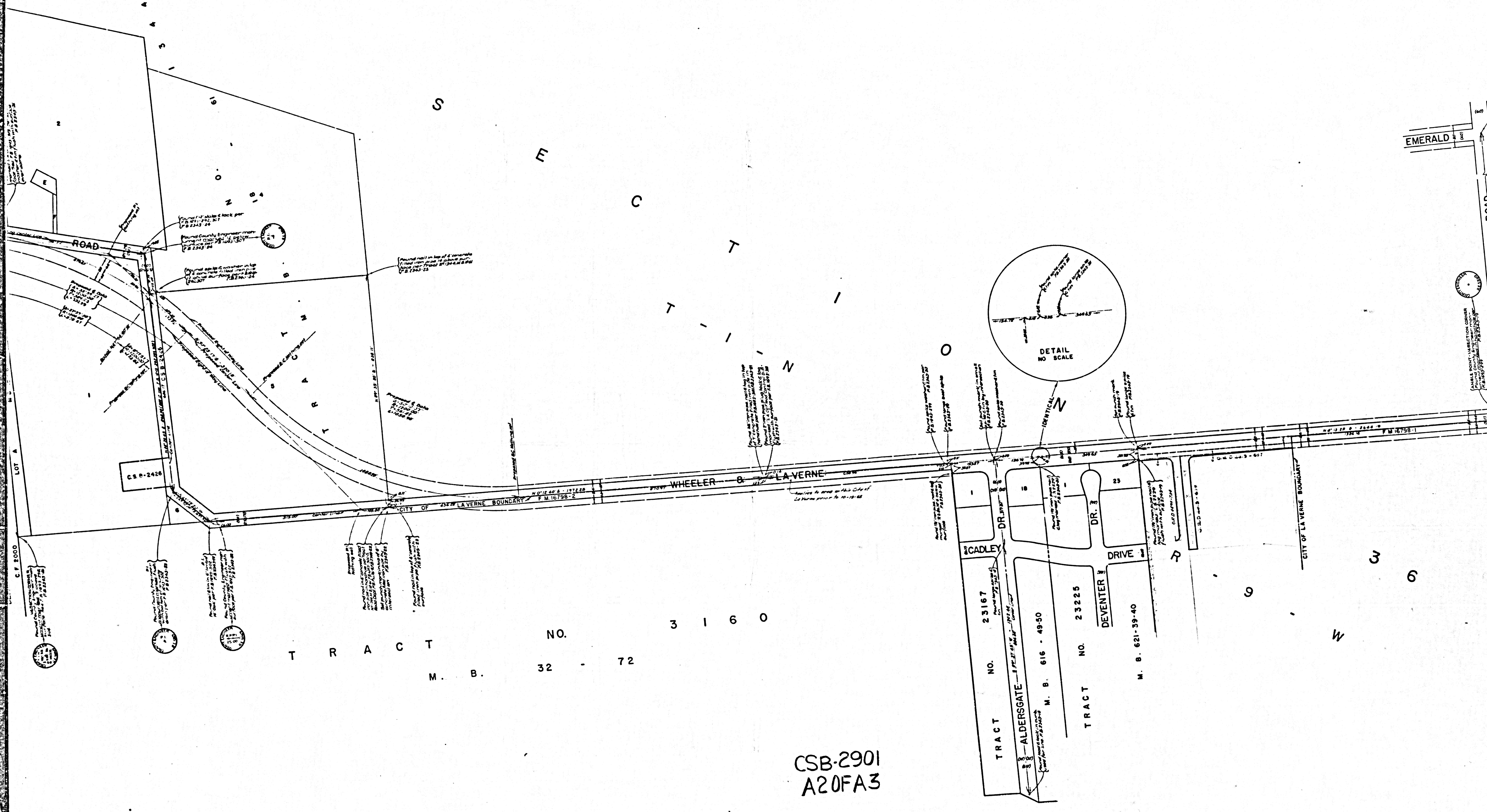
COUNTY OF LOS ANGELES  
 MAP OF  
**WHEELER & LA VERNE ROAD**  
 FROM  
**FOOTHILL BOULEVARD**  
 TO  
**GOLDEN HILLS ROAD**  
 COUNTY SURVEYORS MAP NO. B-2901  
 SCALE:- 1 INCH = 100 FT.

JOB NUMBER 0075-42  
 JOHN A. LAMBIE - COUNTY ENGINEER  
 SURVEYED JUNE, 1964  
 SURVEYED ON REQUEST OF THE REGIONAL  
 PLANNING COMMISSION UNDER SEC. 79,  
 ORD. 4099, BY LETTER DATED NOVEMBER 64  
 AND BY BOARD ORDER DATED DEC. 11, 1951  
 BEARINGS ARE BASED ON THE CALIFORNIA  
 COORDINATE SYSTEM ZONE 7 PER SEC. 8909  
 PUBLIC RESOURCES CODE. SEE C.S. 9423

CSB-2901  
 A10FA3

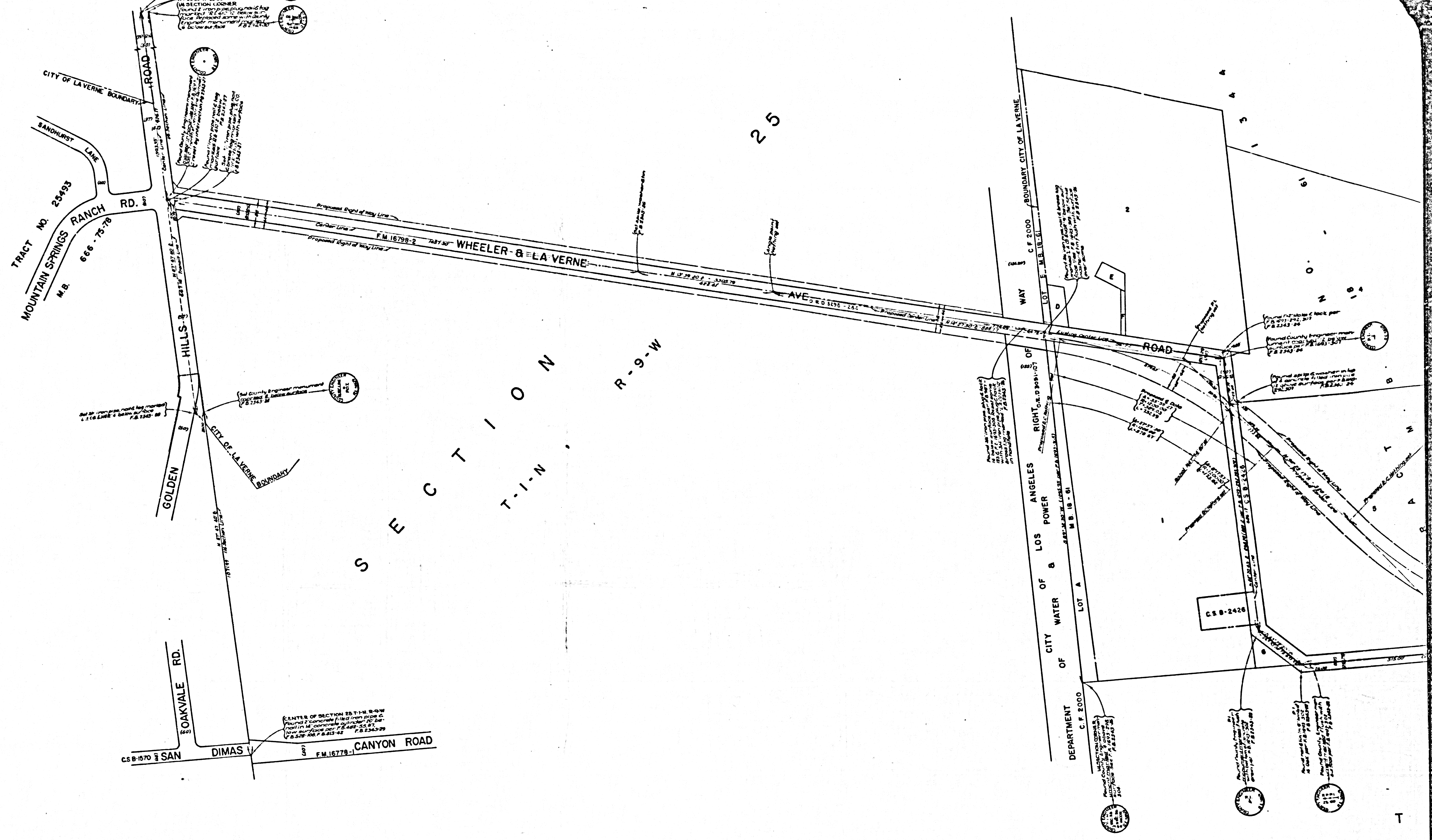
1M42750

F. B. 2343-13-30  
 FIELD WORK BY.....D. E. HOLMES  
 OFFICE WORK BY.....T. M. PALMERI  
 CHECKED BY.....W. J. BRENNER



TRACT NO. 3160  
 M. B. 32 - 72

CSB-2901  
 A20FA3



CSB-2901  
 A30FA3