

6 N. R. II W.

SECTION CORNER  
Round County Surveyors monument  
Corners of Section 17, T6N, R16W,  
S4, S5, S6, S7, S8, S9, S10, S11, S12, S13, S14,  
P.B. 2251-15, 16, 17, 18, 19, 20, 21, 22,  
P.B. 3179-34

SECTION CORNER  
Round County Surveyors monument  
Corners of Section 17, T6N, R16W,  
S4, S5, S6, S7, S8, S9, S10, S11, S12, S13, S14,  
P.B. 2251-15, 16, 17, 18, 19, 20, 21, 22,  
P.B. 3179-34

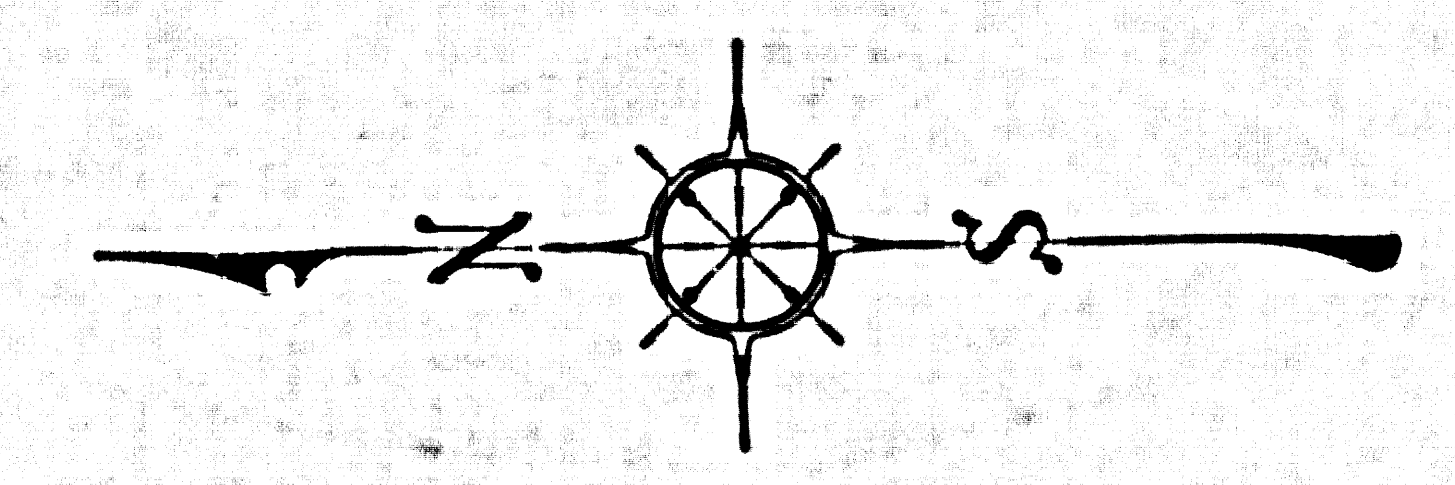
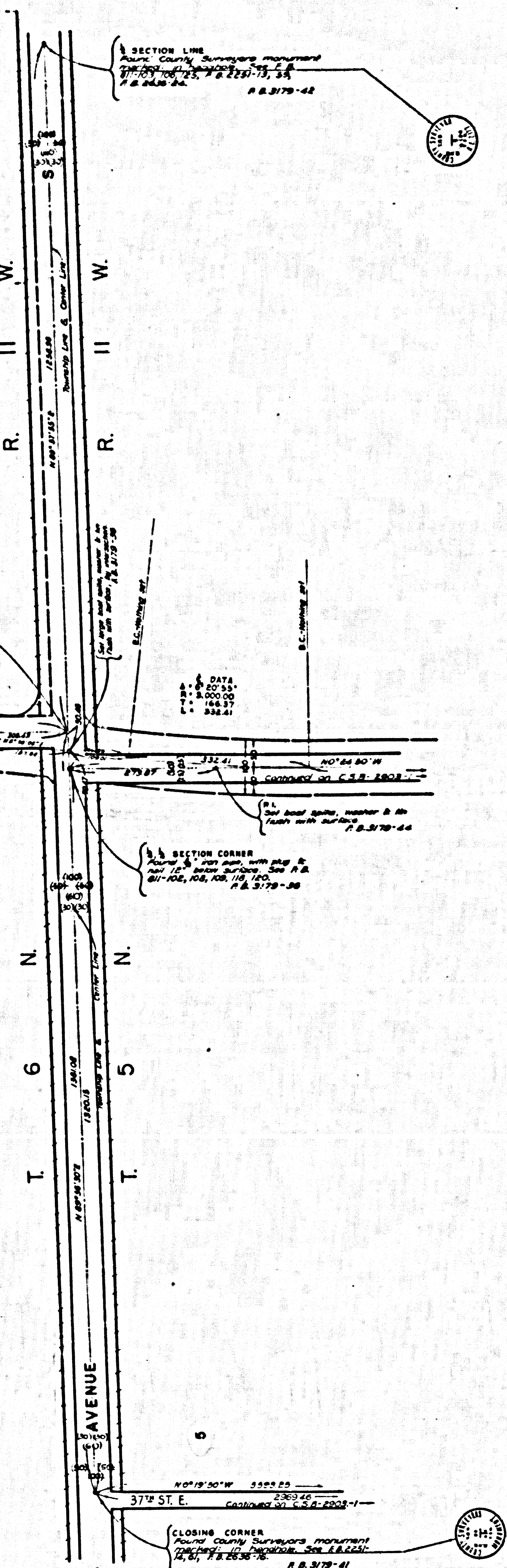
SECTION LINE  
Round County Surveyors monument  
Corners of Section 17, T6N, R16W,  
S4, S5, S6, S7, S8, S9, S10, S11, S12, S13, S14,  
P.B. 2251-15, 16, 17, 18, 19, 20, 21, 22,  
P.B. 3179-34

Proposed Right of Way Line  
Center Line of Section Line  
N 0° 14' 00" E  
2748.10  
E-A-S-T

Proposed Right of Way Line  
Center Line of Section Line  
N 0° 14' 00" W  
2748.10  
E-A-S-T

M. R. 5 3

CENTER OF SECTION  
Round County Surveyors monument  
Corners of Section 17, T6N, R16W,  
S4, S5, S6, S7, S8, S9, S10, S11, S12, S13, S14,  
P.B. 2251-15, 16, 17, 18, 19, 20, 21, 22,  
P.B. 3179-34



COUNTY OF LOS ANGELES  
MAP OF  
**40TH STREET EAST**  
FROM  
BARREL SPRINGS ROAD  
TO  
**AVENUE O**  
COUNTY SURVEYORS MAP NO. B-2903  
SHEET NO. 2 OF 3 SHEETS  
SCALE 1" = 100 FT.

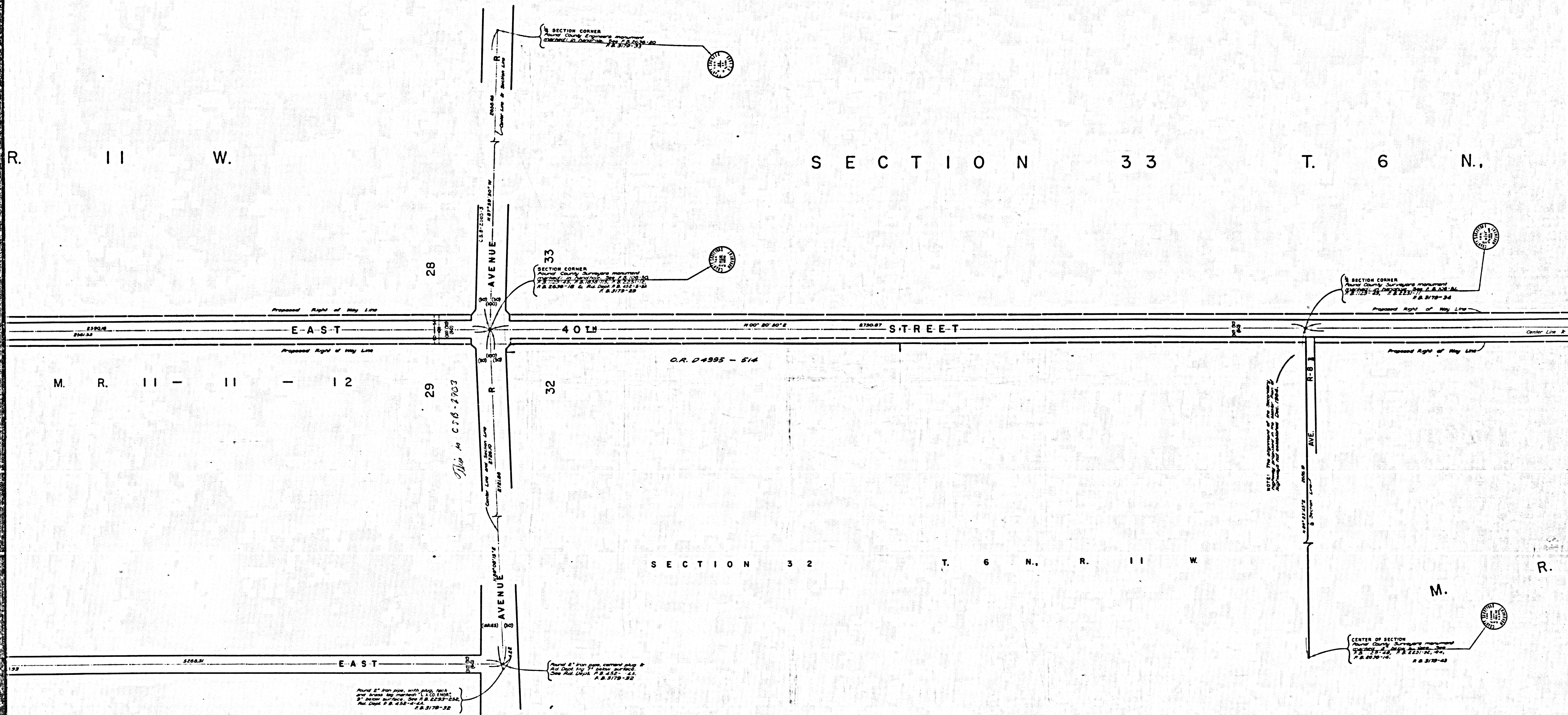
JOB NUMBER 0096.19  
JOHN A. LAMBIE - COUNTY ENGINEER  
SURVEYED APRIL & AUGUST, 1964  
SURVEYED ON REQUEST OF THE REGIONAL  
PLANNING COMMISSION UNDER SEC. 79,  
ORD. 4099, BY LETTER DATED MAR. 19, 1964  
AND BY BOARD ORDER DATED DEC. 11, 1961.  
BEARINGS ARE BASED ON THE BEARING N09°55'35"E  
OF THE WLY LINE OF SECTION 17, T6N, R16W,  
AS SHOWN ON C.S.B.-2783-10

F.B. 3179-5-67  
FIELD WORK BY.....J.C. PIERCE  
OFFICE WORK BY.....G.H. BOYER  
CHECKED BY.....M.E. AUSTIN  
Checked with original maps on file in the office of the County Engineer.

CSB-2903-2  
A1 OF A3

R. 11 W.

SECTION 33 T. 6 N.



M. R. 11 - 11 - 12

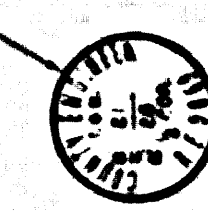
SECTION 32 T. 6 N. R. 11 W.

M. R.

CSB-2903-2  
A20FA3

45 ST. E  
AVE.

SECTION CORNER  
Round County Engineers monument  
found at intersection of Sec. 28  
T. 6 N., R. 11 W. See F.B.  
2293-255, F.B. 1818-02, F.B.  
F.B. 3179-23



S E C T I O N 2 8 T. 6 N., R. 11 W.

21

20

ANASIM AVENUE

29 PALMDALE COLONY

BLVD.

LANDS M. R. 11 - 11

TRACT

N.O.

19967

TR. No.

21883

PALMDALE

35TH STREET

AVE.

M. AVE.

B.

59B

AVE.

72

73

M. AVE.

B.

608-7-9

CSB-2903-2  
A3 OF A3