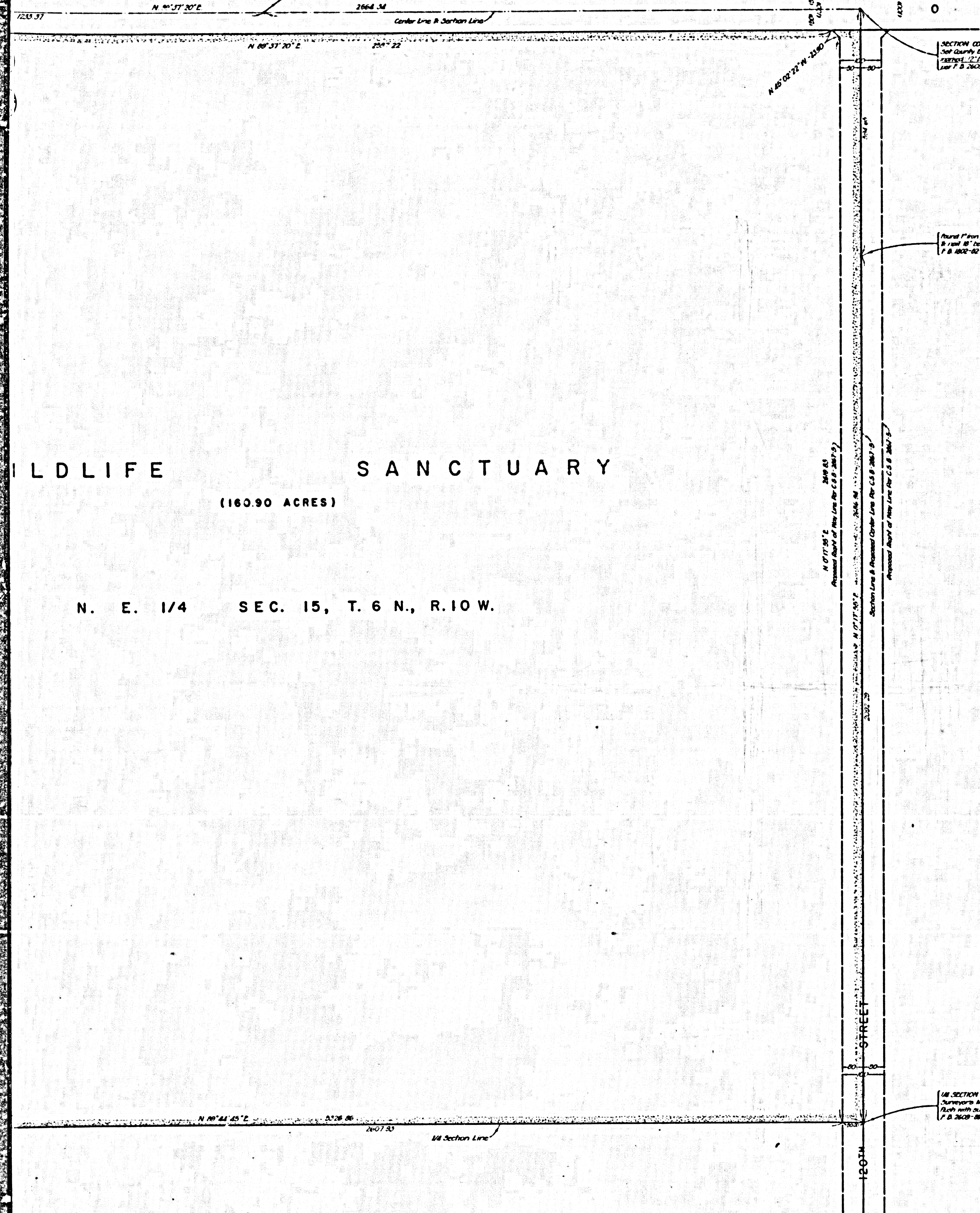


Set 2" iron pipe, 1000 ft. dia.
A flag marked "A" to 1000 ft. dia.
Corner marked by iron pipe
F. B. 2628-52 F. B. 3199-28



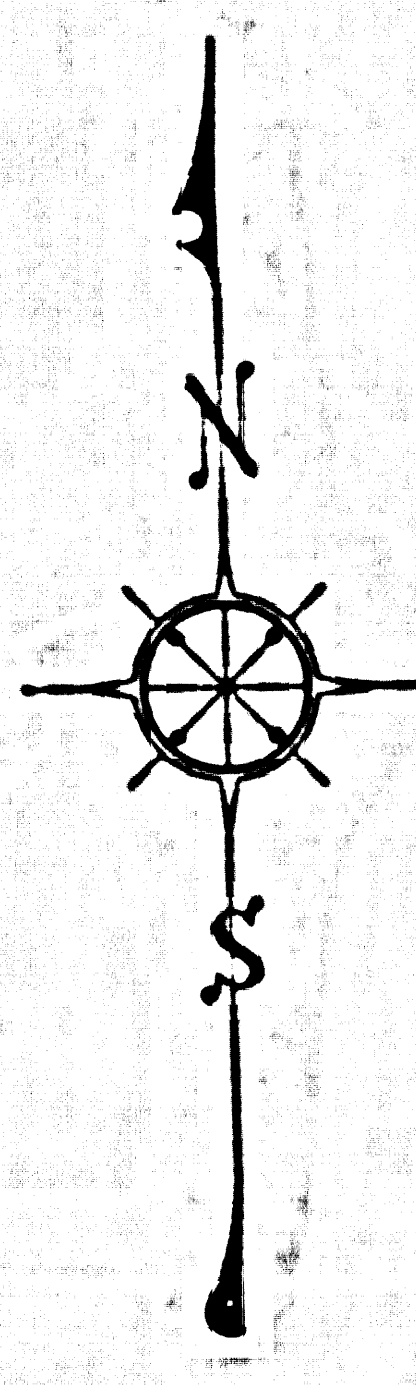
WILDLIFE SANCTUARY
(160.90 ACRES)

N. E. 1/4 SEC. 15, T. 6 N., R. 10 W.

SECTION CORNER - Found Nothing
Set County Engineer Monument
Corner marked by iron pipe
F. B. 2628-52 F. B. 3199-27

Found 1" iron pipe, section plus
to 1000 ft. below surface. See
F. B. 2628-52 F. B. 3199-28

100 SECTION CORNER - Found County
Surveyors Monument
Mark with surface. See F. B. 2628-52
F. B. 2628-52 F. B. 3199-28



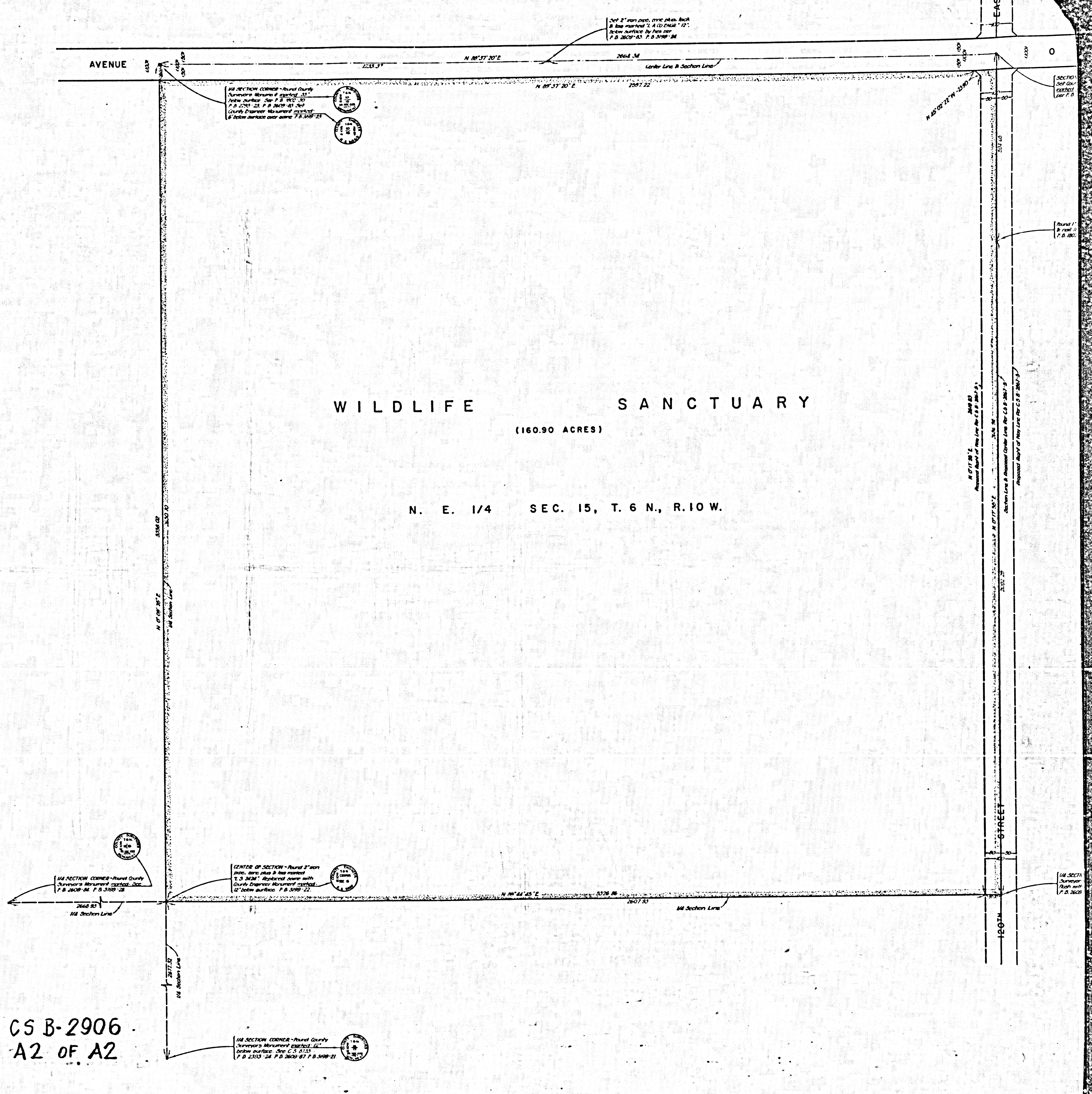
COUNTY OF LOS ANGELES
MAP OF
WILDLIFE SANCTUARY
BEING THE N. E. 1/4 SEC. 15,
T. 6 N., R. 10 W.
COUNTY SURVEYORS MAP NO. B-2906
SCALE - 1 INCH = 100 FT.

JOB NUMBER 0055.82
JOHN A. LAMBIE - COUNTY ENGINEER
SURVEYED SEPTEMBER 1964
SURVEYED ON REQUEST OF THE DIRECTOR
OF PARKS & RECREATION UNDER SEC. 79,
ORD. 4099, BY LETTER DATED MAY 19, 1964.
BEARINGS ARE BASED ON THE BEARING OF
THE NORTHERLY LINE OF SEC. 25, T. 5 N.,
R. 10 W. PER C. S. 8061.
F. B. 3199-19-29
FIELD WORK BY..... J. C. PIERCE
OFFICE WORK BY..... M. HAMASU
CHECKED BY..... F. CESSOR

IM 66

CS B-2906
A1 OF A2

CS B-2906
A2 OF A2



WILDLIFE SANCTUARY

(160.90 ACRES)

N. E. 1/4 SEC. 15, T. 6 N., R. 10 W.

AVENUE

STREET

1/4 SECTION CORNER - Round County
Surveyors Monument marked 35"
above surface. See P. B. 3192-13
P. B. 2608-04 P. B. 3193-18
County Engineer Monument marked
12" below surface. P. B. 3199-22

1/4 SECTION CORNER - Round County
Surveyors Monument marked 35"
above surface. See P. B. 3192-13
P. B. 2608-04 P. B. 3193-18
County Engineer Monument marked
12" below surface. P. B. 3199-22

1/4 SECTION CORNER - Round County
Surveyors Monument marked 35"
above surface. See P. B. 3192-13
P. B. 2608-04 P. B. 3193-18
County Engineer Monument marked
12" below surface. P. B. 3199-22

CENTER OF SECTION - Round 2" iron
pipe, iron pins & has marked
12" S. 24 3/4". Replaced same with
County Engineer Monument marked
12" below surface. P. B. 3199-22

1/4 SECTION CORNER - Round County
Surveyors Monument marked 12"
above surface. See P. B. 3192-13
P. B. 2608-04 P. B. 3193-18 P. B. 3199-22

1/4 SECTION
Surveyors
Monument
marked with
P. B. 3192

Point 1
P. B. 3192

SECTION
15
P. B. 3192

1/4 SECTION CORNER - Round County
Surveyors Monument marked 35"
above surface. See P. B. 3192-13
P. B. 2608-04 P. B. 3193-18
County Engineer Monument marked
12" below surface. P. B. 3199-22

1/4 SECTION CORNER - Round County
Surveyors Monument marked 35"
above surface. See P. B. 3192-13
P. B. 2608-04 P. B. 3193-18
County Engineer Monument marked
12" below surface. P. B. 3199-22