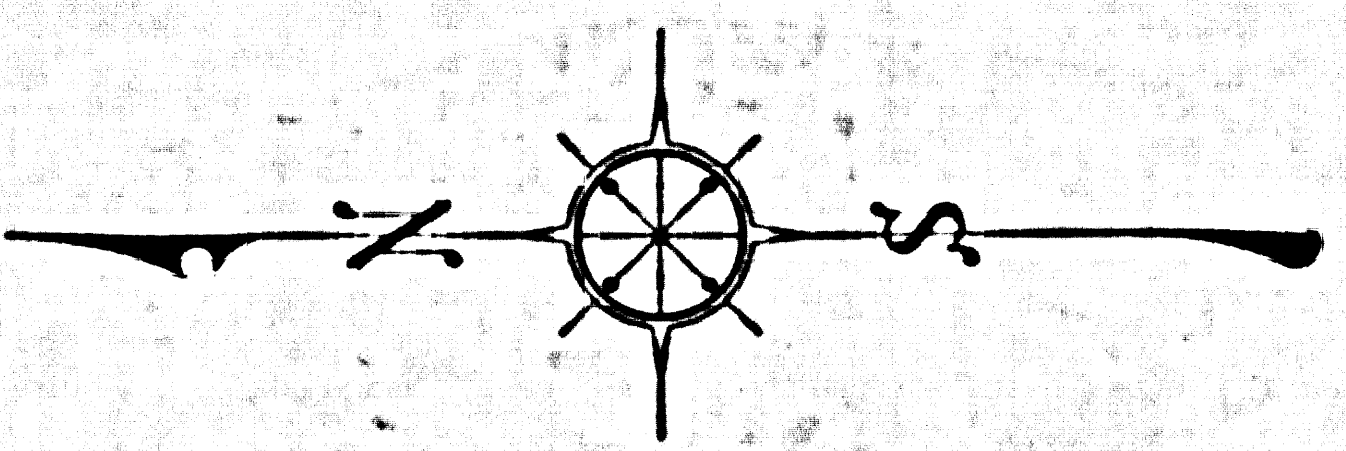
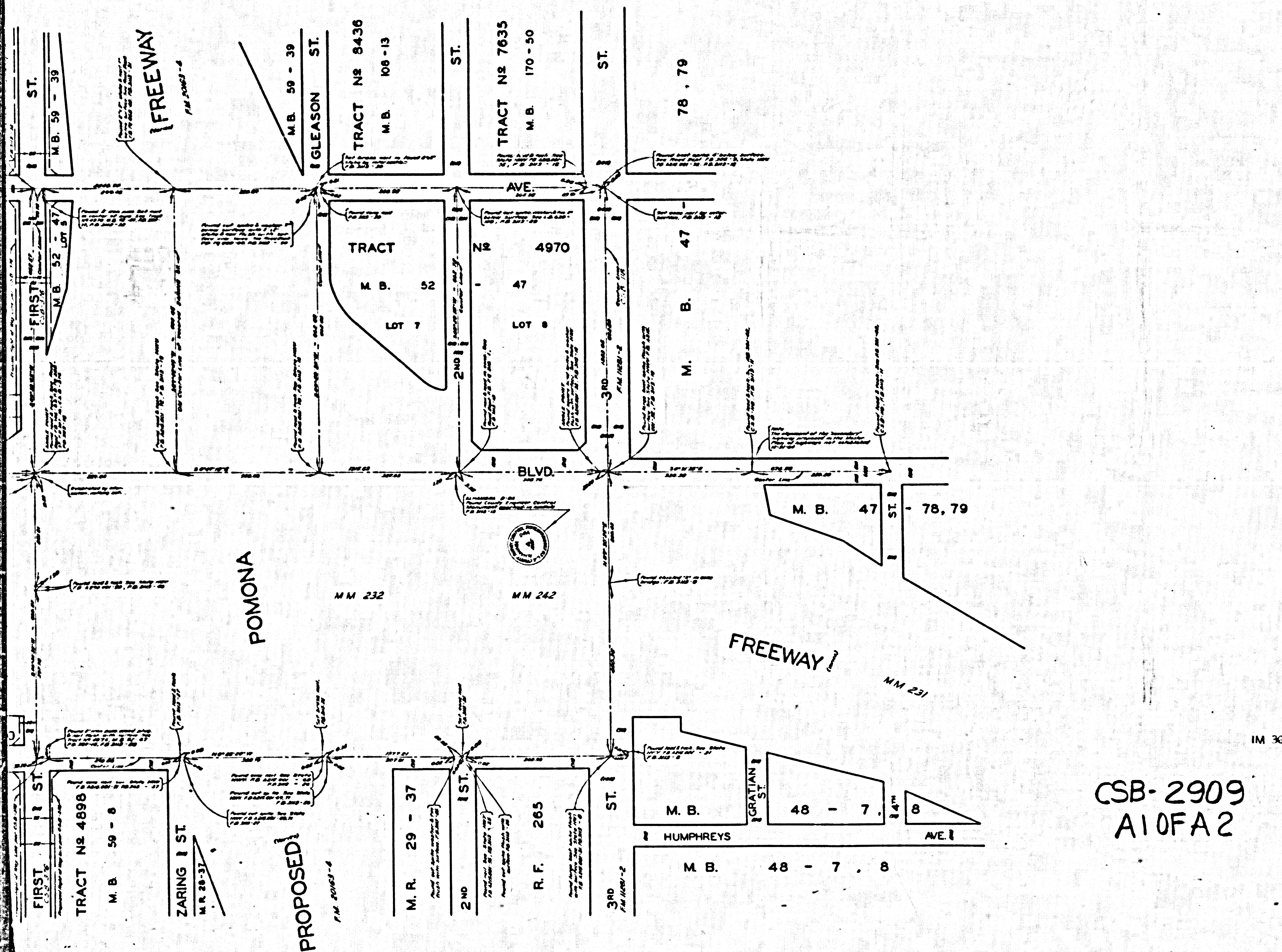


DETAIL - NOT TO SCALE



COUNTY OF LOS ANGELES
 MAP OF
FORD BLVD.
 FROM
 THIRD STREET
 TO
 FLORAL DRIVE
 COUNTY SURVEYORS MAP NO. B-2909
 SCALE: 1 INCH = 100 FT.

JOB NUMBER 0095.51
 JOHN A. LAMBIE - COUNTY ENGINEER
 SURVEYED MAY 1964
 SURVEYED ON REQUEST OF THE REGIONAL
 PLANNING COMMISSION UNDER SEC. 78
 ORD. 4099 BY LETTER DATED NOV. 8, 1962
 AND BY BOARD ORDER DATED DEC. 11, 1961
 BEARINGS ARE BASED ON THE CALIFORNIA
 COORDINATE SYSTEM ZONE 7, PER SEC. 8609
 PUBLIC RESOURCES CODE SEE C.S. 8423
 F.B. 3113 - 5 - 48
 FIELD WORK BY..... L. L. BROWN
 OFFICE WORK BY..... R. S. DOWNS
 CHECKED BY..... G. E. BARR
 F. CESSOR

CSB-2909
 A10FA2

The alignment between Dozier St. and
 Floral Dr. revised to conform to Sheet
 2909, Map No. B-2909 as approved by
 I.C.C. on June 1, 1967 by W.H.B. on
 Dec. 15, 1967.
 Street names of Ford Blvd. South of
 Eugene St. changed by W.H.B. on 1/1/67

