

1/4 SECTION CORNER
 Found County Surveyors Monument
 Located at 1/4 Section Corner
 F.B. 3205-11, 12
 F.B. 3200-11

FREWAY
 VALLEY

PROPOSED ANTELOPE

PORTION OF SEC. 13

T. 3 N., R. 16 W.

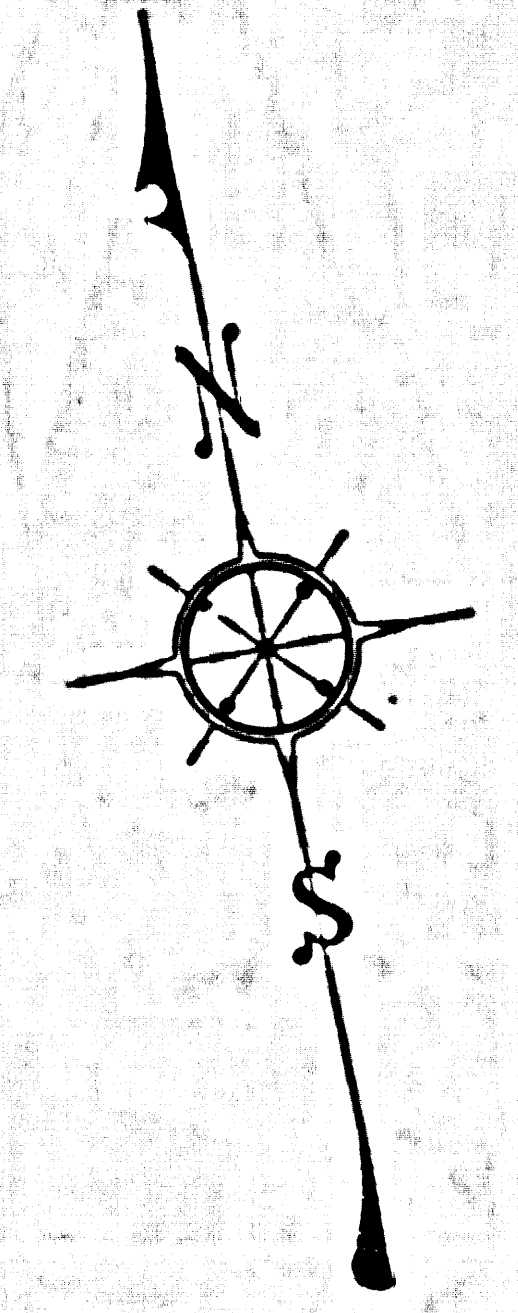
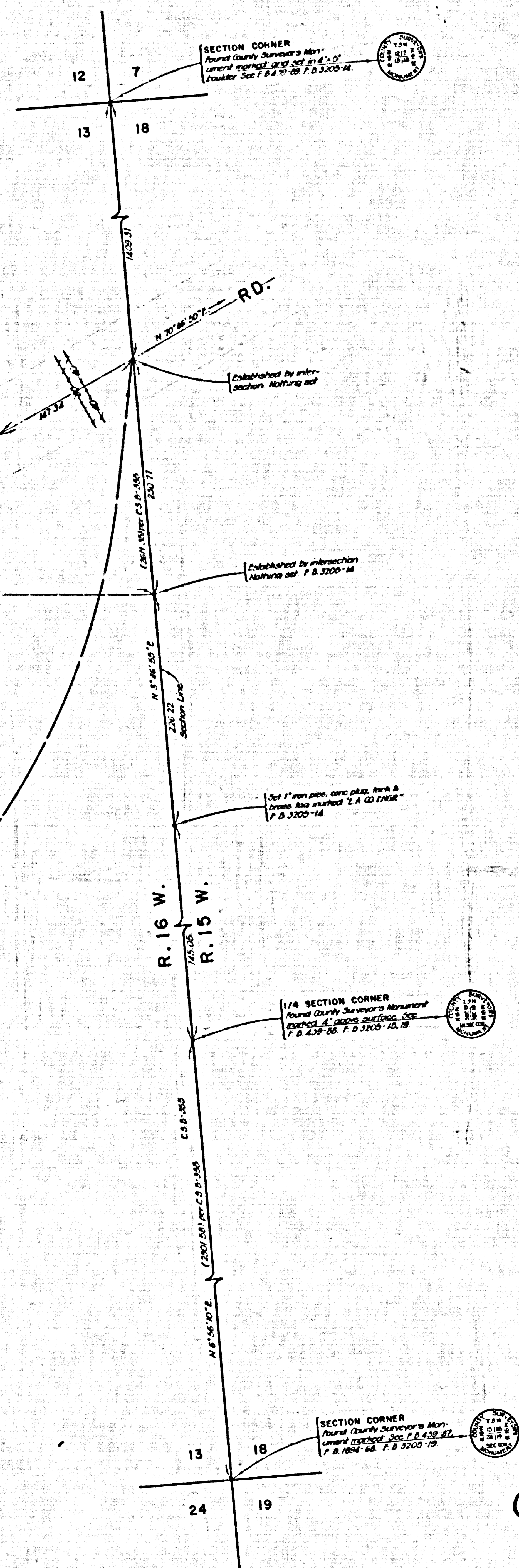
MAY 29, 1969

ENGINEER

C.S. B-5064

EASTERLY BOUNDARY RANCHO SAN FRANCISCO

S.P. No. 2 - Found 2" iron pipe
 section plus 8" iron 8" drive
 surface. See P.B. 1450-25
 C.S. B-7230-1, F.B. 3200-11, 12



COUNTY OF LOS ANGELES
 MAP OF
LOS PINETOS ROAD
 FROM
 E'LY LINE SEC. 13, T. 3 N., R. 16 W.
 TO
 SIERRA HIGHWAY
 COUNTY SURVEYORS MAP NO. B-2911
 SCALE - 1 INCH = 50 FT.

JOB NUMBER 0096.34

JOHN A. LAMBIE - COUNTY ENGINEER
 SURVEYED AUG. - SEPT. 1964

SURVEYED ON REQUEST OF THE REGIONAL
 PLANNING COMMISSION UNDER SEC. 79,
 ORD. 4099, BY LETTER DATED JULY 7, 1964
 AND BY BOARD ORDER DATED DEC. 11, 1951.

BEARINGS ARE BASED ON THE BEARING OF
 THE SOUTH 1/2 OF THE E'LY LINE OF SEC. 13
 T. 3 N., R. 16 W. AS SHOWN ON C.S. B-355.

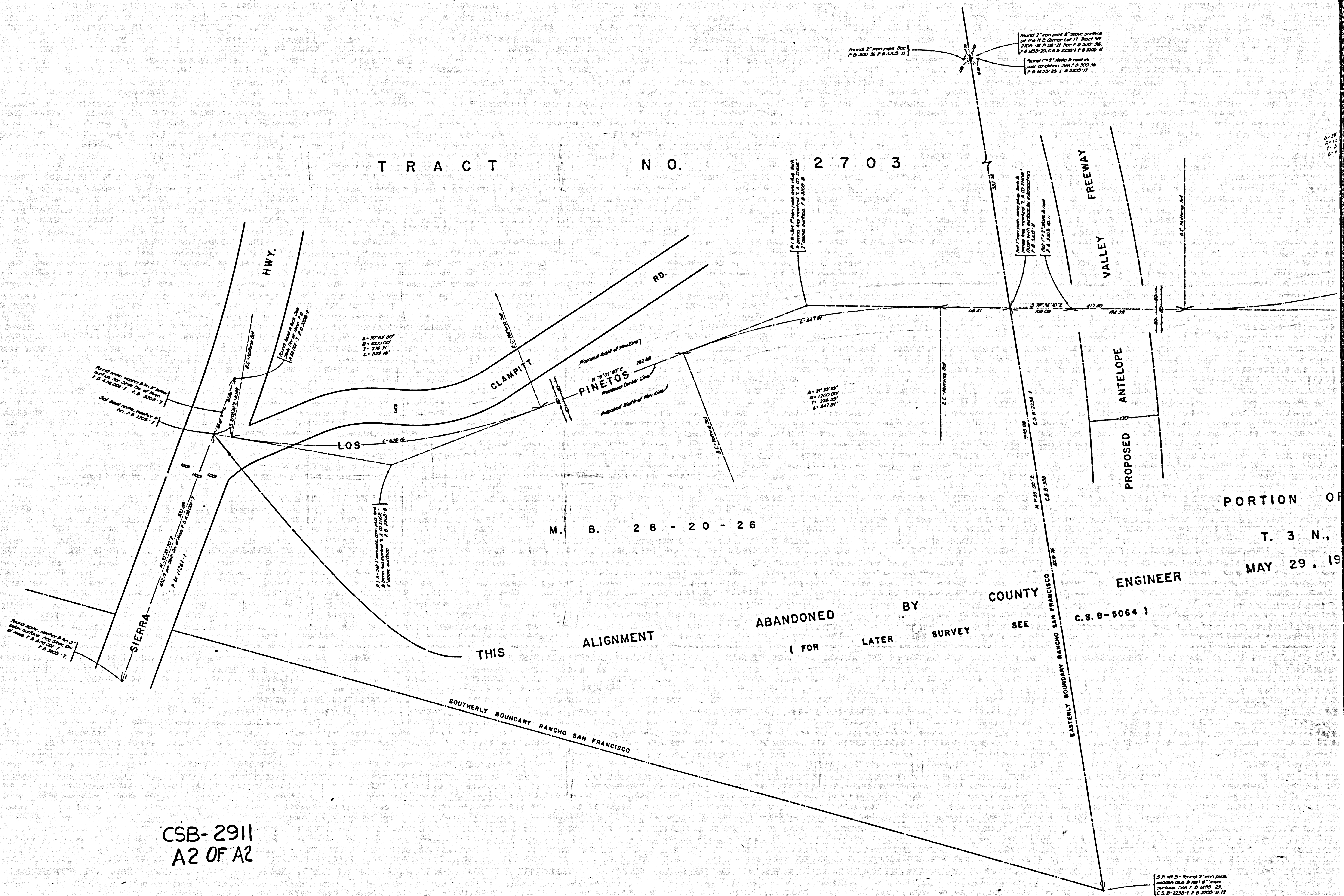
F. B. 3205-5-21

FIELD WORK BY..... W. E. NEWMAN
 OFFICE WORK BY..... M. HAMASU
 CHECKED BY..... M. E. AUSTIN

CSB-2911
 A10FA2

TM C2
 234-117

TRACT NO. 2703



M. B. 28 - 20 - 26

PORTION OF T. 3 N., MAY 29, 19

ABANDONED BY COUNTY ENGINEER (FOR LATER SURVEY SEE C.S. B-5064)

CSB-2911 A2 OF A2

Small text block at bottom right corner of the map area.