

COUNTY OF LOS ANGELES
 MAP OF
STREETS IN THE QUARTZ HILL AREA

COUNTY SURVEYORS MAP NO. B-2914
 SHEET NO. 1 OF 3 SHEETS
 SCALE: 1 INCH = 100 FT.
 JOB NUMBER - 0303.00

JOHN A. LAMBIE - COUNTY ENGINEER
 SURVEYED SEPTEMBER, 1964

SURVEYED ON REQUEST OF THE COUNTY
 ENGINEER UNDER SEC. 79, ORD. 4099
 BY LETTER DATED OCTOBER 2, 1956

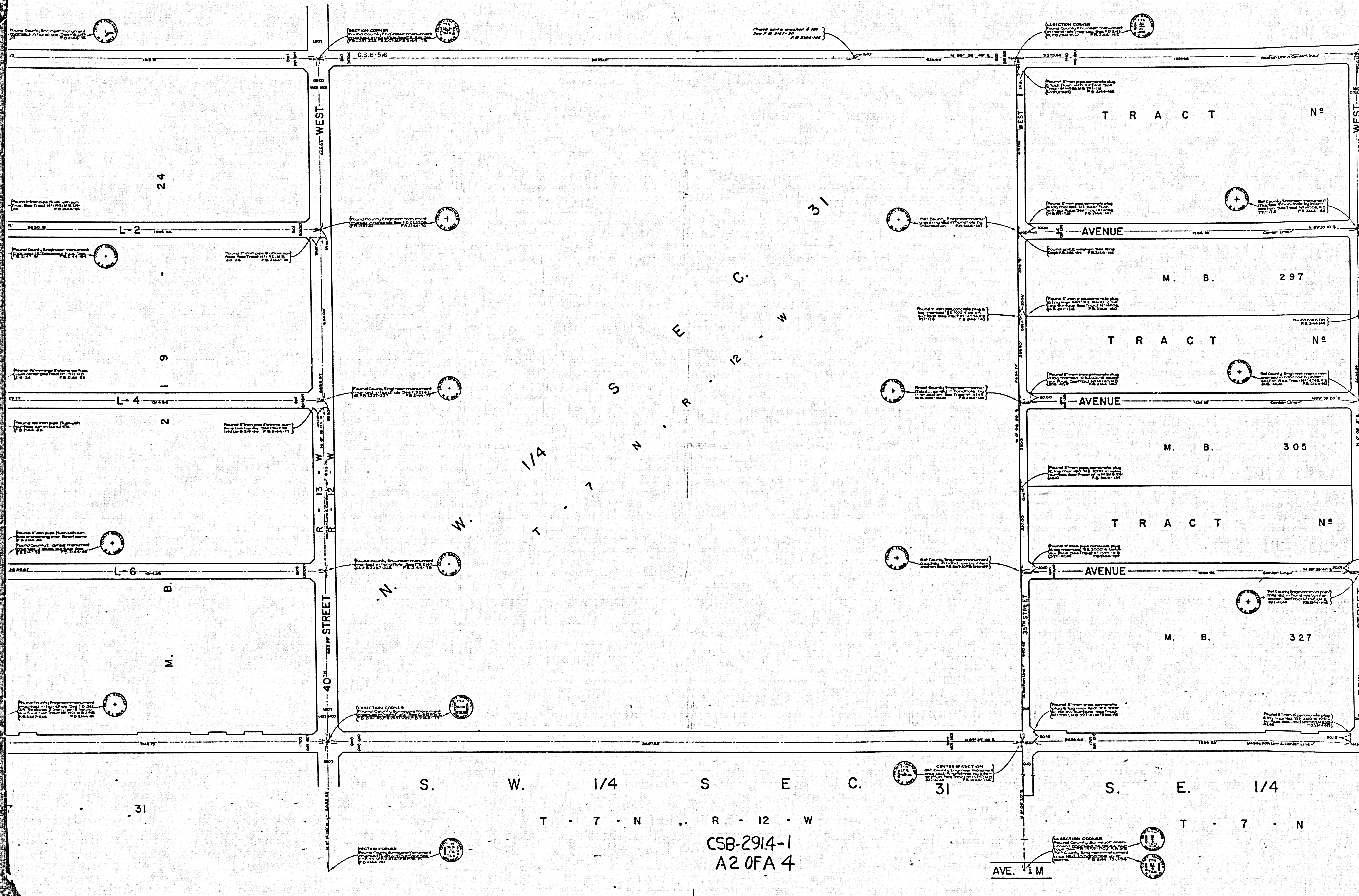
BEARINGS ARE BASED ON THE BEARINGS OF
 THE CENTER LINE OF QUARTZ HILL ROAD
 PER C.S. 8088
 F.B. 2144-S-160

FIELD WORK BY.....J.S. COATES
 OFFICE WORK BY.....T.M. PALMER
 T.H. BURNS
 CHECKED BY.....H.E. AUSTIN

THIS SURVEY MADE TO ESTABLISH CENTER
 LINES ON THE STREETS IN THIS AREA
 PRELIMINARY TO THE FORMATION OF A
 SANITARY SEWER DISTRICT.

CSB-2914-1
 A1 OF A4

IM 71



CSB-2914-1
A2 OF A 4

AVE. M

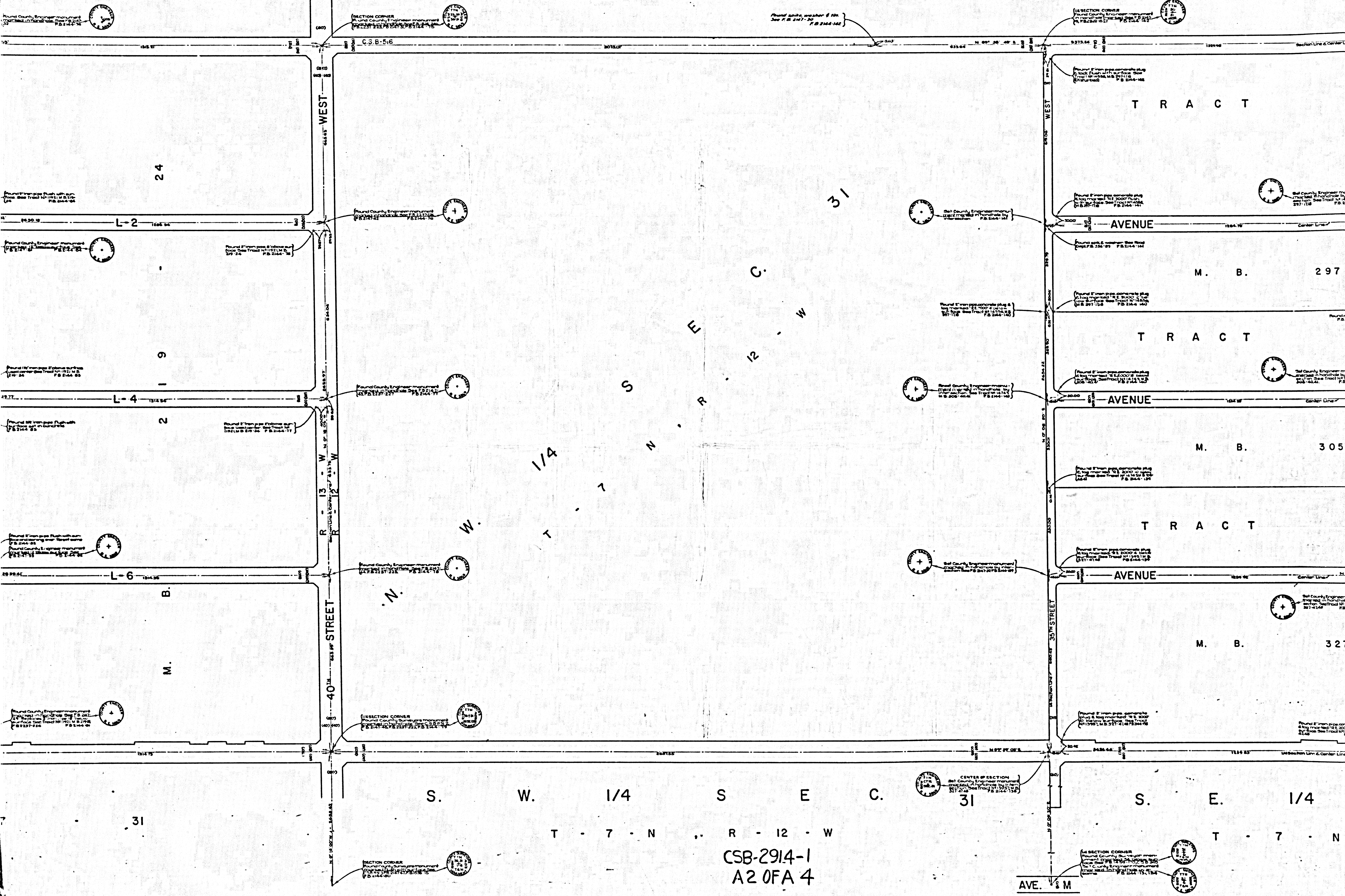
TRACT N°
M. B. 297
TRACT N°
M. B. 305
TRACT N°
M. B. 327

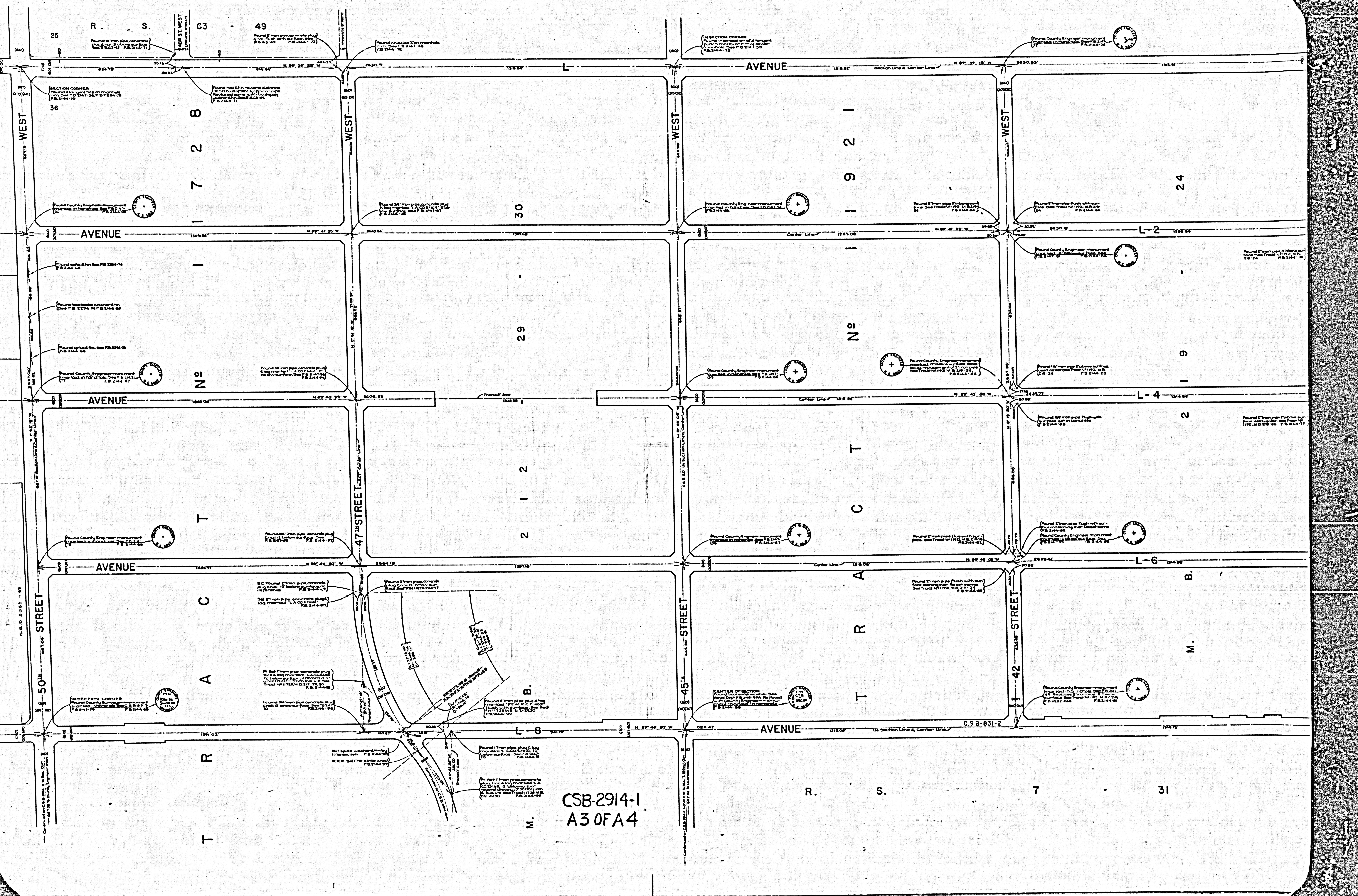
WEST STREET
35th STREET

L-2
L-4
L-6

S. W. 1/4
S. E. 1/4
T. 7. N.
R. 12. W.

CENTER OF SECTION
SECTION CORNER





R. S. 63 49

AVENUE

WEST

WEST

WEST

WEST

1 7 2 8

1 9 2 1

24

AVENUE

1 1

1 1

1 9

AVENUE

Nº

Nº

1 4

AVENUE

T

T

2

A C

T R A C T

L-6

STREET

47 STREET

STREET

STREET

T R

T R A C T

M. B.

CSB-2914-1
A30FA4

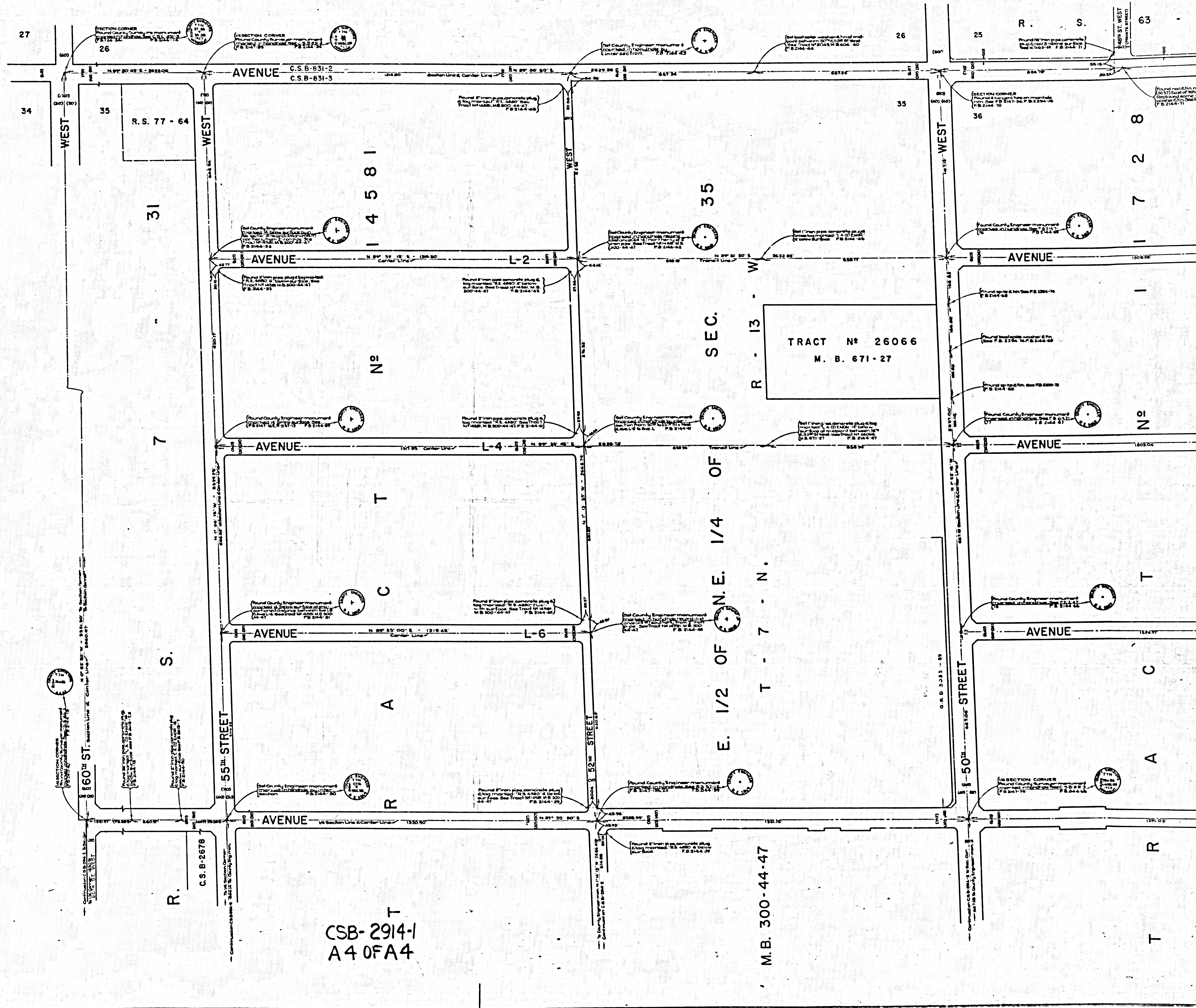
R. S. 7 31

Annotations on the left side of the plat, including bearings and distances for various lines and corners. Includes text like 'SECTION CORNER', 'Found County Engineer monument', and 'Found iron pipe concrete plug'.

Annotations in the middle section of the plat, including bearings and distances for various lines and corners. Includes text like 'SECTION CORNER', 'Found County Engineer monument', and 'Found iron pipe concrete plug'.

Annotations in the right-middle section of the plat, including bearings and distances for various lines and corners. Includes text like 'SECTION CORNER', 'Found County Engineer monument', and 'Found iron pipe concrete plug'.

Annotations on the right side of the plat, including bearings and distances for various lines and corners. Includes text like 'SECTION CORNER', 'Found County Engineer monument', and 'Found iron pipe concrete plug'.



T
CSB-2914-1
A40FA4

M.B. 300-44-47

TRACT No 26066
M. B. 671-27

E. 1/2 OF N.E. 1/4 OF
T - 7 - N.

R - 13 - W

35

31

7

R.S. 77-64

R.
C.S.B-2678

R. S. 63

8

7

1

No

T

C

A

R

T