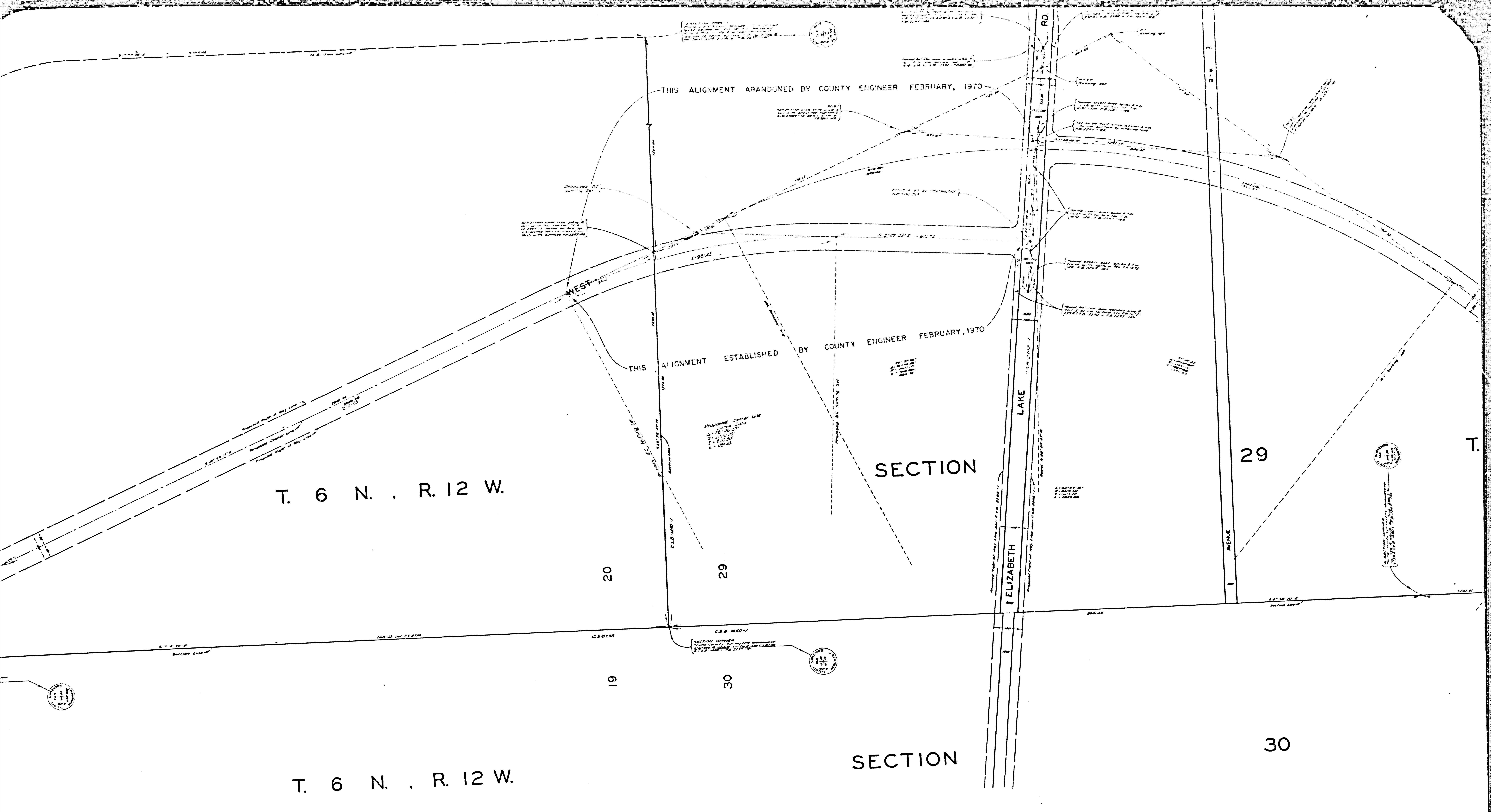


COUNTY OF LOS ANGELES  
 MAP OF  
**30<sup>TH</sup> STREET WEST**  
 FROM  
 CITY RANCH ROAD  
 TO  
 AVENUE A  
 COUNTY SURVEYORS MAP NO. B-2917  
 SHEET NO. 1 OF 8 SHEETS  
 SCALE: 1 INCH = 100 FT.

JOB NUMBER 0095 56  
 JOHN A. LAMBIE - COUNTY ENGINEER  
 SURVEYED APRIL - JULY, 1964  
 SURVEYED ON REQUEST OF THE REGIONAL  
 PLANNING COMMISSION UNDER SEC. 79  
 ORD 4099 BY LETTERS DATED FEB 14, 1962  
 & MARCH 18, 1964, AND BY BOARD ORDER  
 DATED DEC. 11, 1951  
 BEARINGS ARE BASED ON THE CALIFORNIA  
 COORDINATE SYSTEM ZONE 7 PER SEC. 8609  
 PUBLIC RESOURCES CODE & C.S. 9423  
 F.B. 2257 - 131 - 160  
 FIELD WORK BY ..... S. H. LISKY  
 OFFICE WORK BY ..... G. O. BAILEY  
 ..... R. S. DOWNS  
 CHECKED BY ..... M. OSHITA

CSB-2917-1  
 A10FA3

NOTE:  
 DISTANCE MEASUREMENTS SHOWN HEREON WERE OBTAINED BY THE GEODIMETER  
 AN ELECTRO-OPTICAL MEASURING DEVICE DATA RECORDED IN F.B. 3603 & F.B. 3604



T. 6 N. R. 12 W.

T. 6 N. R. 12 W.

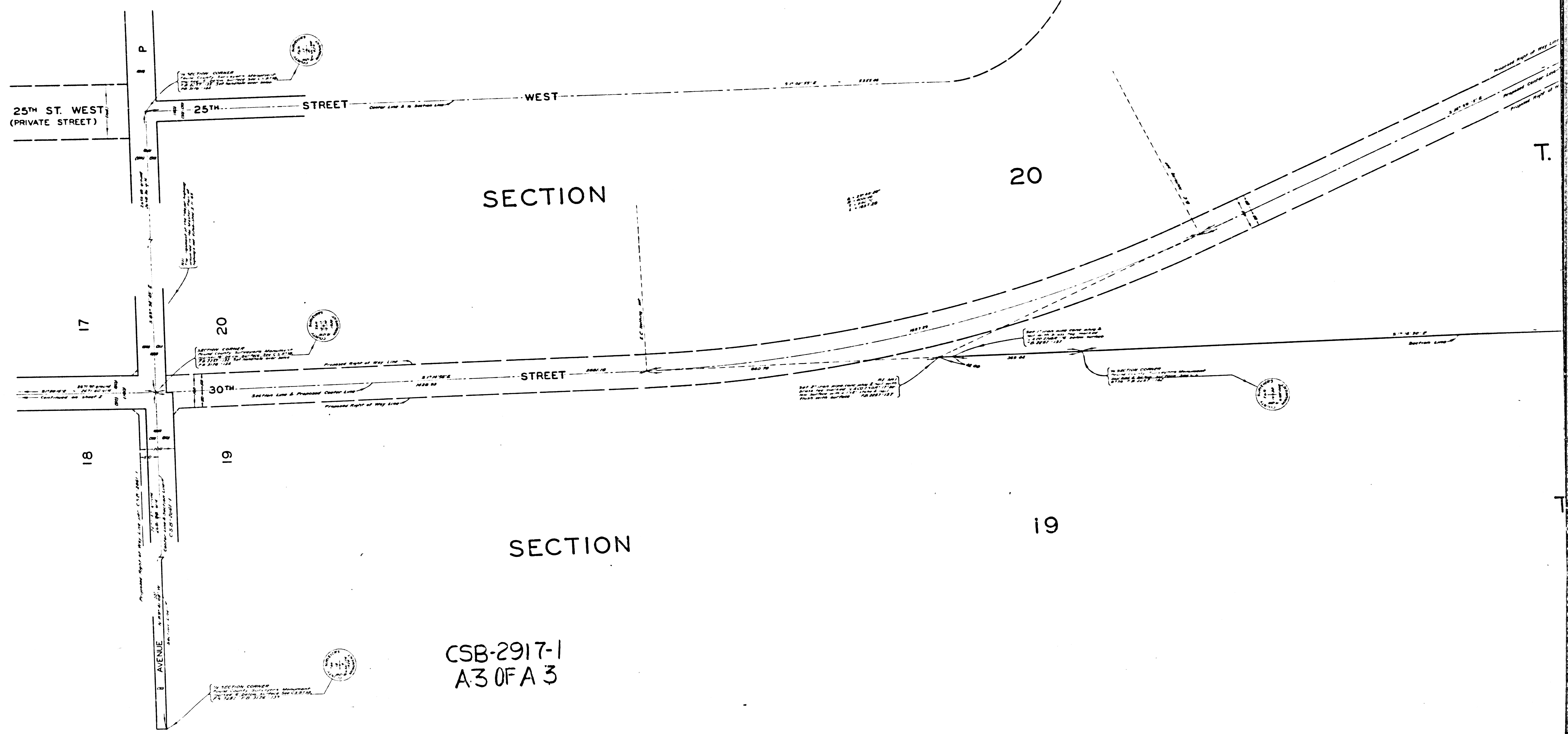
THIS ALIGNMENT ABANDONED BY COUNTY ENGINEER FEBRUARY, 1970

THIS ALIGNMENT ESTABLISHED BY COUNTY ENGINEER FEBRUARY, 1970

SECTION

SECTION

CSB 2917-1  
A 2 OF A 3



25TH ST. WEST  
(PRIVATE STREET)

17

20

18

19

20

19

SECTION

SECTION

CSB-2917-1  
A3 OF A 3

T.

SECTION CORNER  
SECTION LINE & PROPOSED CORNER LINE  
PROPOSED RIGHT OF WAY LINE

SECTION CORNER  
SECTION LINE & PROPOSED CORNER LINE  
PROPOSED RIGHT OF WAY LINE

SECTION CORNER  
SECTION LINE & PROPOSED CORNER LINE  
PROPOSED RIGHT OF WAY LINE

SECTION CORNER  
SECTION LINE & PROPOSED CORNER LINE  
PROPOSED RIGHT OF WAY LINE

SECTION CORNER  
SECTION LINE & PROPOSED CORNER LINE  
PROPOSED RIGHT OF WAY LINE

SECTION CORNER  
SECTION LINE & PROPOSED CORNER LINE  
PROPOSED RIGHT OF WAY LINE