

COUNTY OF LOS ANGELES
 MAP OF
30TH STREET WEST
 FROM
 CITY RANCH ROAD
 TO
 AVENUE A
 COUNTY SURVEYORS MAP NO. B-2917
 SHEET NO. 3 OF 8 SHEETS
 SCALE: 1 INCH = 100 FT.

JOB NUMBER 0095.56
 JOHN A. LAMBIE - COUNTY ENGINEER
 SURVEYED APRIL - JULY, 1964
 SURVEYED ON REQUEST OF THE REGIONAL
 PLANNING COMMISSION UNDER SEC. 78
 ORD. 4098 BY LETTERS DATED FEB. 14, 1962
 & MARCH 18, 1964, AND BY BOARD ORDER
 DATED DEC. 11, 1951
 BEARINGS ARE BASED ON THE CALIFORNIA
 COORDINATE SYSTEM ZONE 7, PER SEC. 8809
 PUBLIC RESOURCES CODE SEE C.S. 9423
 F.B. 3176-11-136
 FIELD WORK BY G. E. DREIER
 OFFICE WORK BY C. R. LIND
 G. H. BOYER
 R. S. DOWNS
 CHECKED BY M. E. AUSTIN
 Added Proposed Right of Way Lines And M-B,
 July 24, 1973 G.M.

CSB-2917-3
 A1 OF A3

IM 64, 71

NOTE:
 DISTANCE MEASUREMENTS SHOWN HEREON WERE OBTAINED BY THE GEODIMETER,
 AN ELECTRO-OPTICAL MEASURING DEVICE. DATA RECORDED IN FB.3603 & FB.3604
Ground Distances added May 1966 by R.S.B.

W.

R.

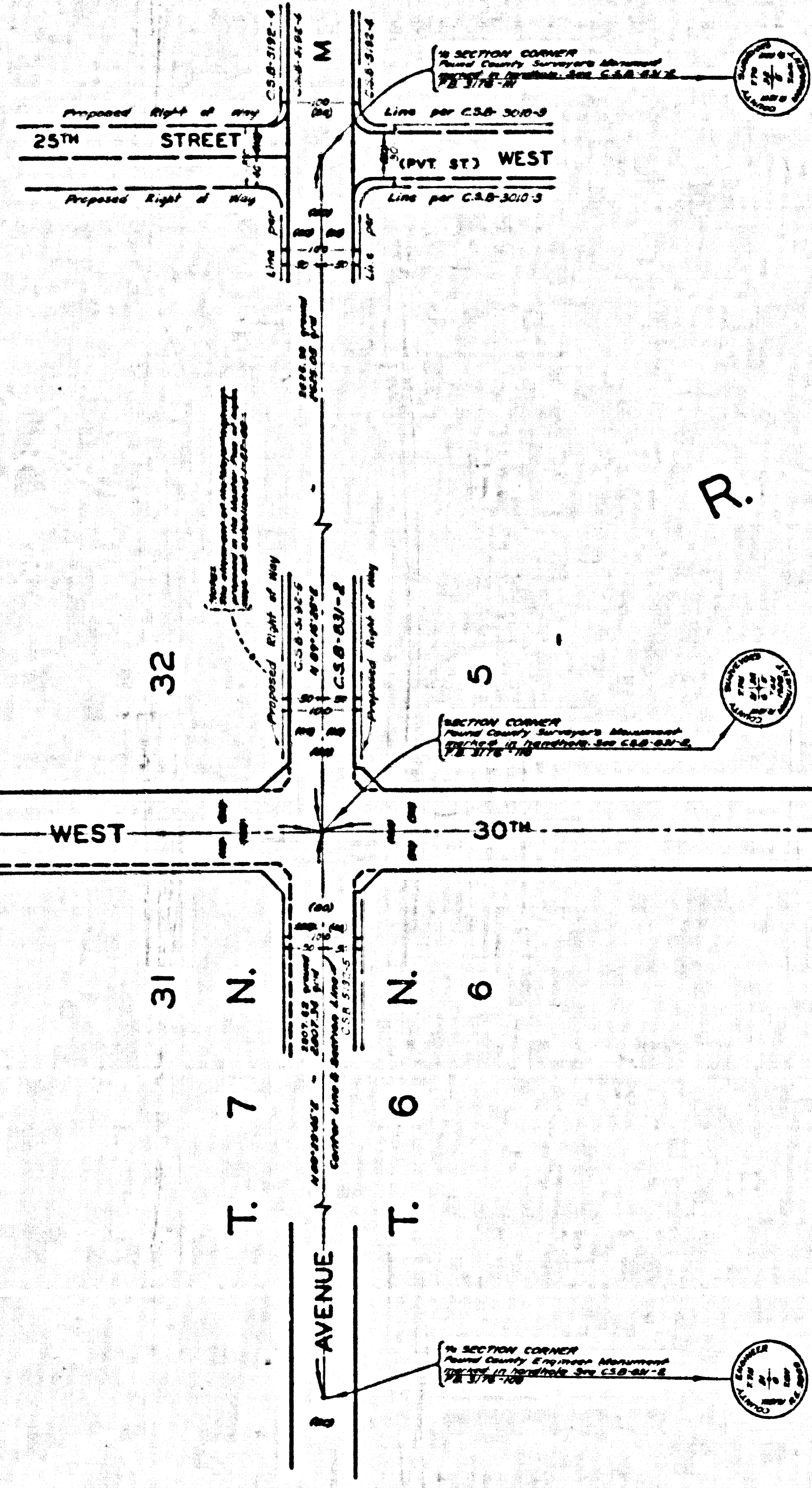
S.

S.

R.

TION 31 T. 7 N. R. 12 W.

SECTION 6 T. 6 N.

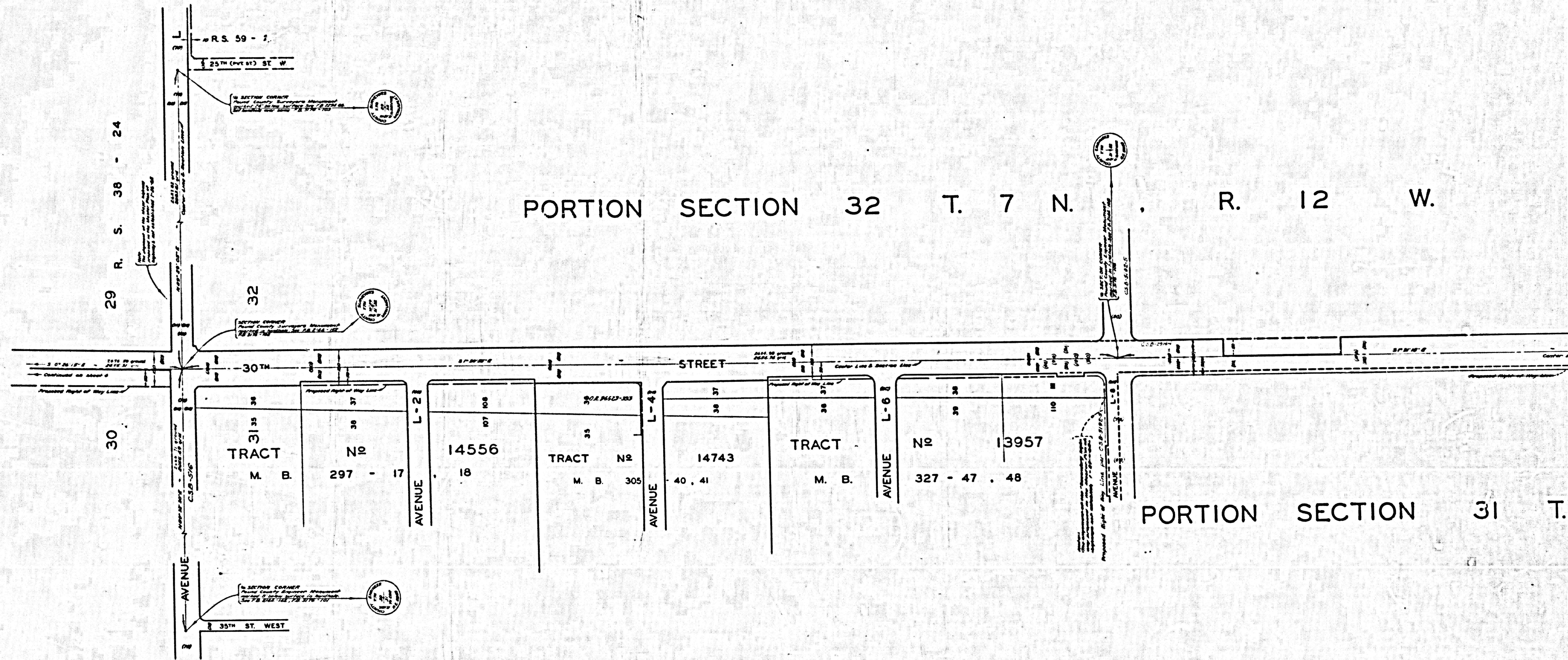


61 - 14 - 15

AVENUE M-4 (PRIVATE STREET)

AVENUE M-8

CSB-2917-3
A20FA3



PORTION SECTION 32 T. 7 N. R. 12 W.

PORTION SECTION 31 T. 7 N. R. 12 W.

CSB-2917-3
A3 OF A3