

COUNTY OF LOS ANGELES  
 MAP OF  
**30<sup>TH</sup> STREET WEST**  
 FROM  
 CITY RANCH ROAD  
 TO  
 AVENUE A

COUNTY SURVEYORS MAP NO. B-2917  
 SHEET NO. 4 OF 8 SHEETS  
 SCALE: 1 INCH = 100 FT.

JOB NUMBER 0095.98

JOHN A. LAMBIE - COUNTY ENGINEER  
 SURVEYED APRIL - JULY, 1964

SURVEYED ON REQUEST OF THE REGIONAL  
 PLANNING COMMISSION UNDER SEC. 78,  
 ORD. 4099 BY LETTERS DATED FEB. 14, 1962  
 & MARCH 18, 1964 AND BY BOARD ORDER  
 DATED DEC. 11, 1951

BEARINGS ARE BASED ON THE CALIFORNIA  
 COORDINATE SYSTEM ZONE 7, PER SEC. 8809  
 PUBLIC RESOURCES CODE SEE C.S. 9423

F.B. 3178-11-138

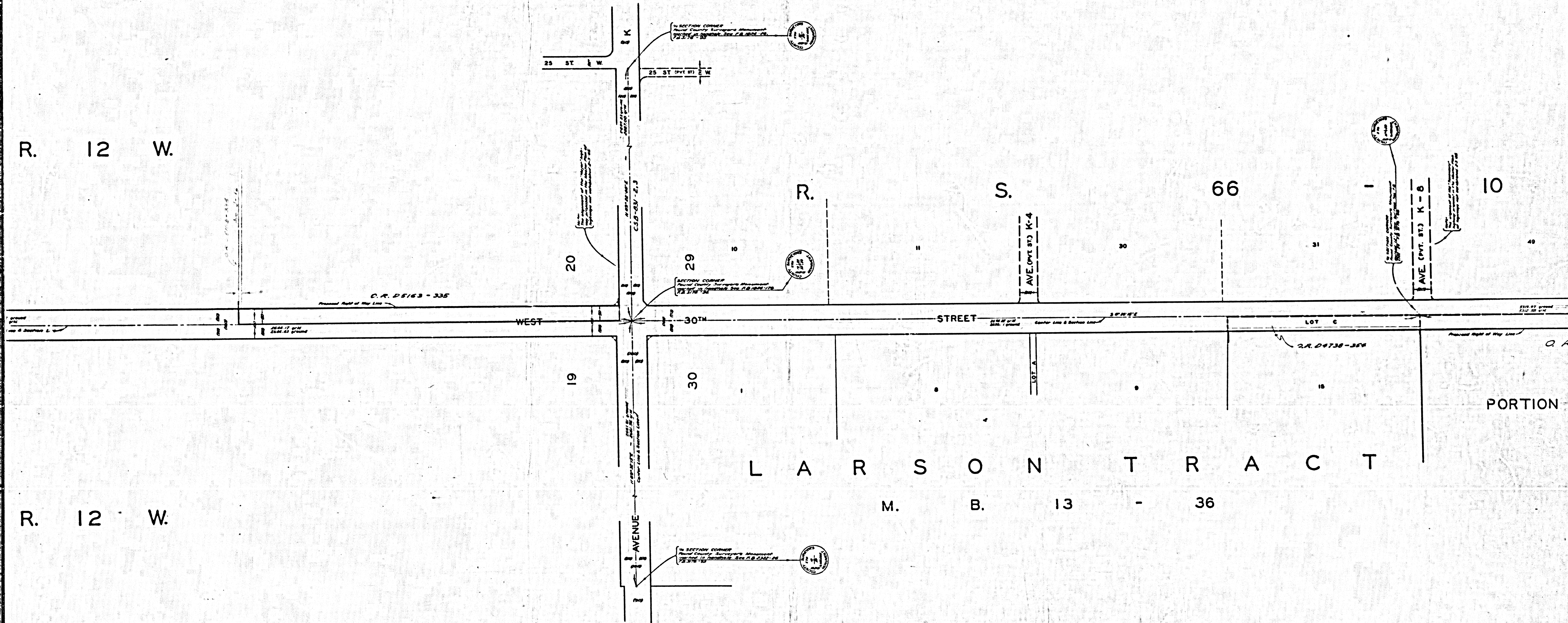
FIELD WORK BY ..... G. E. DREIER  
 OFFICE WORK BY ..... C. K. LIND  
 ..... G. H. BOYER  
 ..... R. S. DOWNS  
 CHECKED BY ..... H. E. AUSTIN

CSB-2917-4  
 A1 OF A 3

NOTE:  
 DISTANCE MEASUREMENTS SHOWN HEREON WERE OBTAINED BY THE GEODIMETER,  
 AN ELECTRO-OPTICAL MEASURING DEVICE. DATA RECORDED IN FB.3603 & FB.3604  
 Small distances added May 1969 by R.S.B.

R. 12 W.

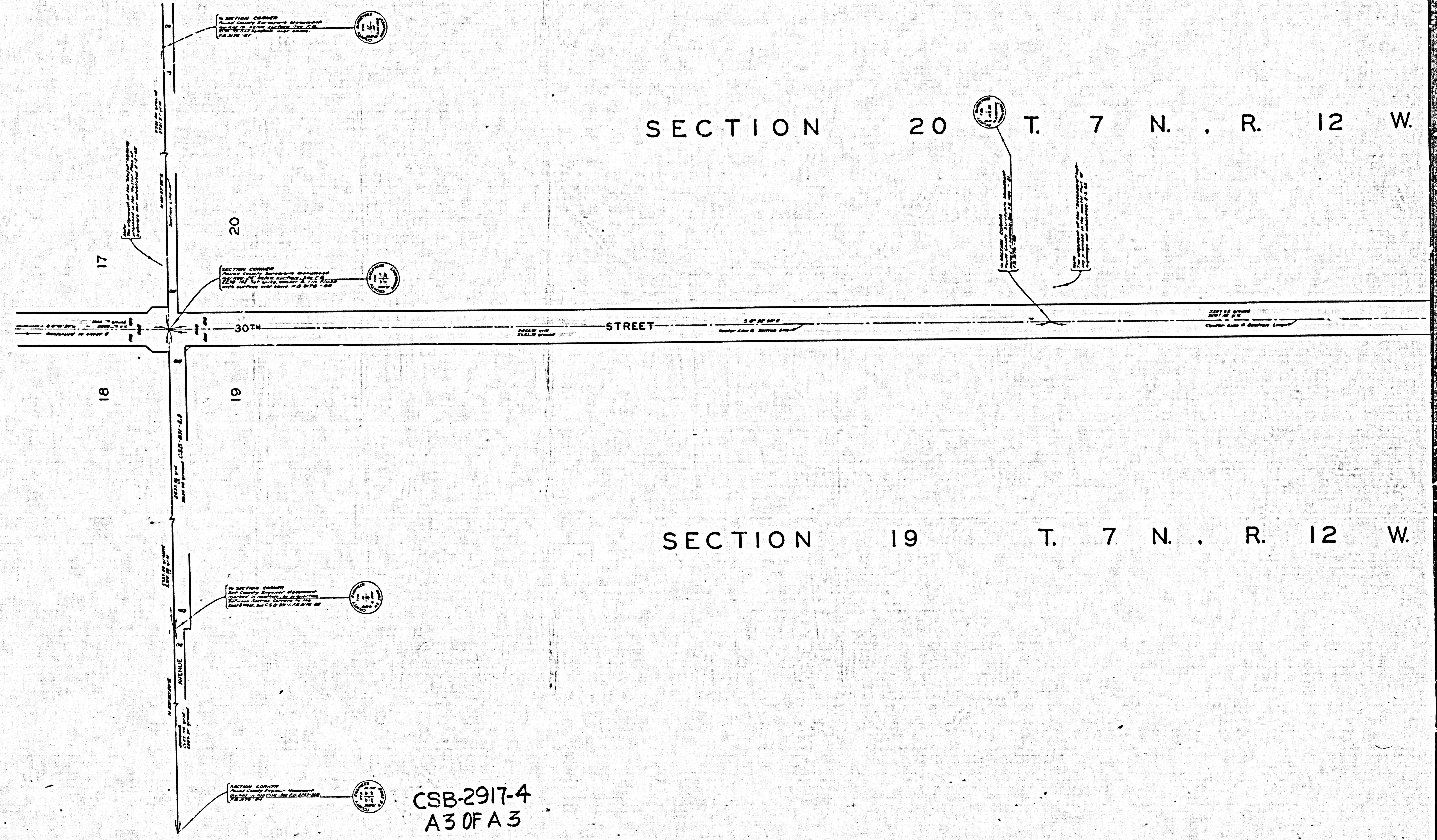
R. 12 W.



CSB-2917-4  
A2 OF A3

CSB-2917-4  
SHEET NO. 6 OF 4 SHEETS  
DATE: 10/1/01

CSB-2917-4  
SHEET NO. 6 OF 4 SHEETS  
DATE: 10/1/01



SECTION 20 T. 7 N. R. 12 W.

SECTION 19 T. 7 N. R. 12 W.

CSB-2917-4  
A3 OF A3