

N. R. 12 W.

N. R. 12 W.

WEST

17

20

18

19

AVENUE

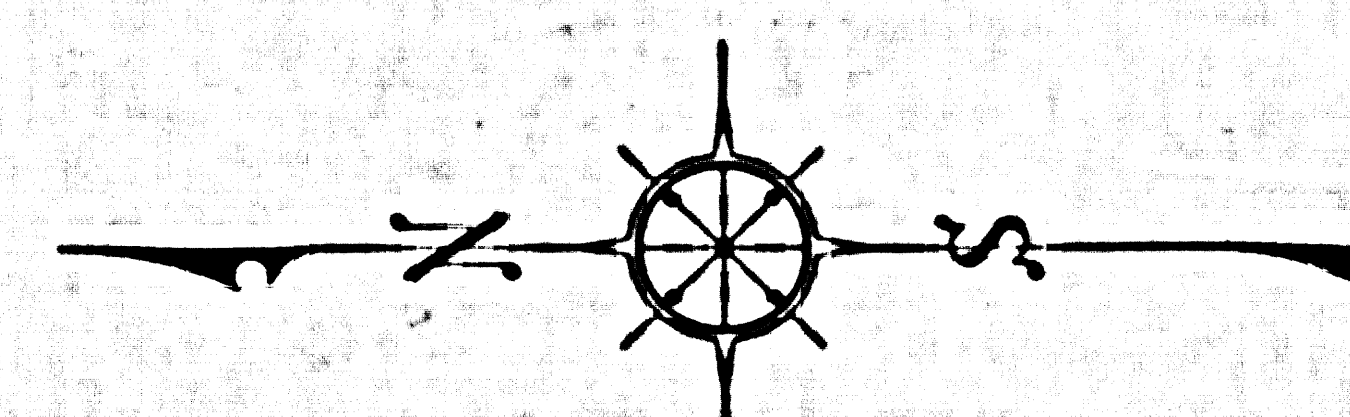
SECTION CORNER  
Point County Surveyors' Map No. B-2917  
Section 17, T. 12 N., R. 12 W., S. 43

SECTION CORNER  
Point County Surveyors' Map No. B-2917  
Section 20, T. 12 N., R. 12 W., S. 43

SECTION CORNER  
Point County Surveyors' Map No. B-2917  
Section 18, T. 12 N., R. 12 W., S. 43

SECTION CORNER  
Point County Surveyors' Map No. B-2917  
Section 19, T. 12 N., R. 12 W., S. 43

CSB-2917-5  
A1 OF A3



COUNTY OF LOS ANGELES  
MAP OF  
**30<sup>TH</sup> STREET WEST**  
FROM  
CITY RANCH ROAD  
TO  
AVENUE A  
COUNTY SURVEYORS MAP NO. B-2917  
SHEET NO. 5 OF 8 SHEETS  
SCALE: 1 INCH = 100 FT.

JOB NUMBER 0095 50  
JOHN A. LAMBIE - COUNTY ENGINEER  
SURVEYED APRIL - JULY, 1964  
SURVEYED IN REQUEST OF THE REGIONAL  
PLANNING COMMISSION UNDER SEC. 79,  
ORD. 4099, BY LETTERS DATED FEB. 14, 1962  
& MARCH 18, 1964, AND BY BOARD ORDER  
DATED DEC. 11, 1951  
BEARINGS ARE BASED ON THE CALIFORNIA  
COORDINATE SYSTEM ZONE 7, PER SEC. 8809  
PUBLIC RESOURCES CODE SEE C.S. 8423  
F. B. 3176 - II - 136  
FIELD WORK BY ..... G. E. DRIER  
..... C. R. LIND  
OFFICE WORK BY ..... G. H. BOYER  
..... R. S. DOWNS  
CHECKED BY ..... H. E. AUSTIN

NOTE:  
DISTANCE MEASUREMENTS SHOWN HEREON WERE OBTAINED BY THE GEODIMETER,  
AN ELECTRO-OPTICAL MEASURING DEVICE. DATA RECORDED IN F.B. 3603 & F.B. 3604  
Ground Distances added May 1964 by R.S.B.

R. 12 W.

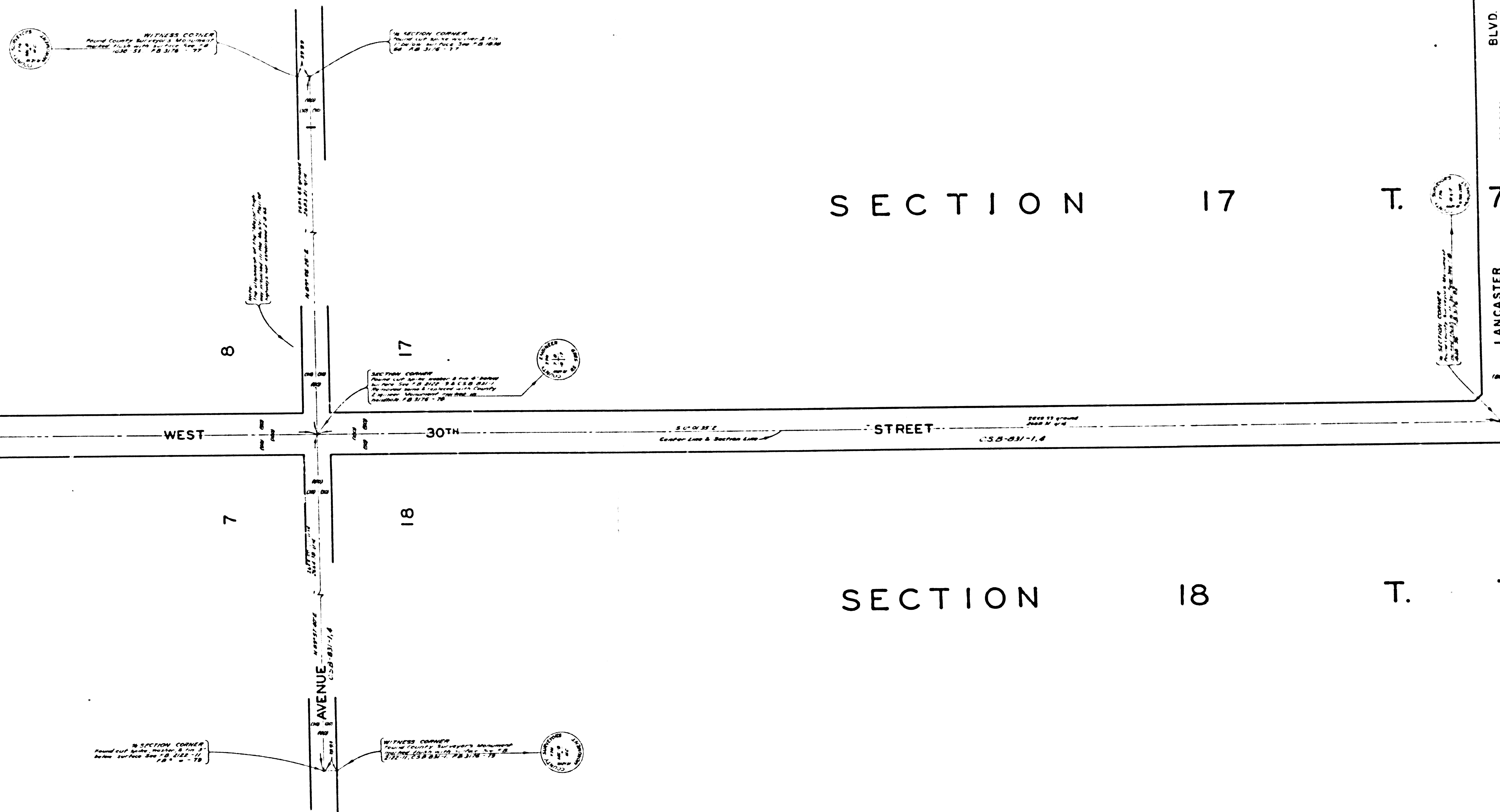
SECTION 17

T. 7 N. R.

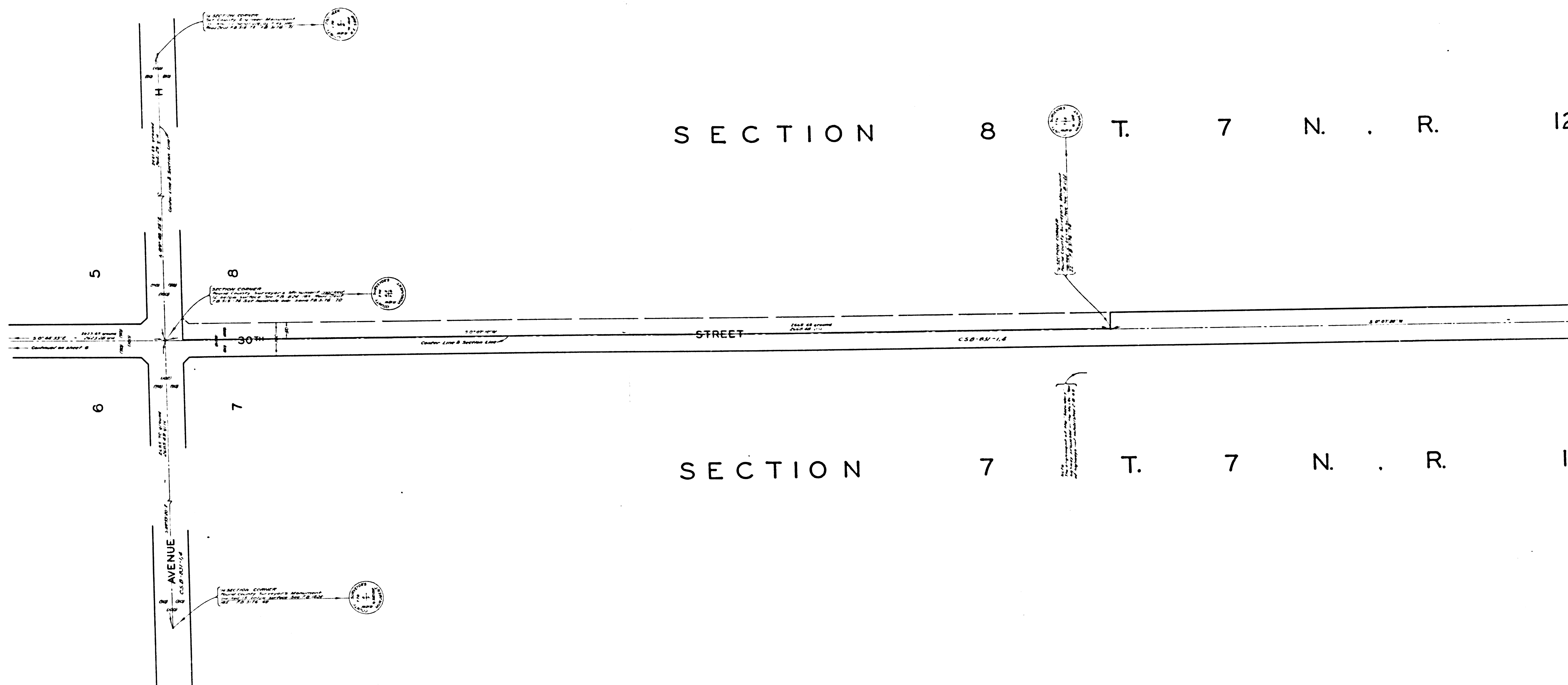
R. 12 W.

SECTION 18

T. 7 N. R.



CSB-2917-5  
A 2 OF A 3



CSB-2917-5  
A3 OF A 3