

8 N. R. 12 W.

COUNTY OF LOS ANGELES
 MAP OF
30TH STREET WEST
 FROM
 CITY RANCH ROAD
 TO
 AVENUE A
 COUNTY SURVEYORS MAP NO. B-2917
 SHEET NO. 7 OF 8 SHEETS
 SCALE - 1 INCH = 100 FT.

JOB NUMBER 0095.56
 JOHN A. LAMBIE - COUNTY ENGINEER
 SURVEYED APRIL - JULY, 1964
 SURVEYED ON REQUEST OF THE REGIONAL
 PLANNING COMMISSION UNDER SEC. 79,
 ORD. 4099 BY LETTERS DATED FEB. 14, 1962
 & MARCH 18, 1964, AND BY BOARD ORDER
 DATED DEC. 11, 1951
 BEARINGS ARE BASED ON THE CALIFORNIA
 COORDINATE SYSTEM ZONE 7 PFA SEC. 8809
 PUBLIC RESOURCES CODE SEE C.S. 9423
 F. B. 3176-11 - 136
 FIELD WORK BY G. E. DREIER
 C. R. LIND
 OFFICE WORK BY G. H. BOYER
 R. S. DOWNS
 CHECKED BY H. E. AUSTIN

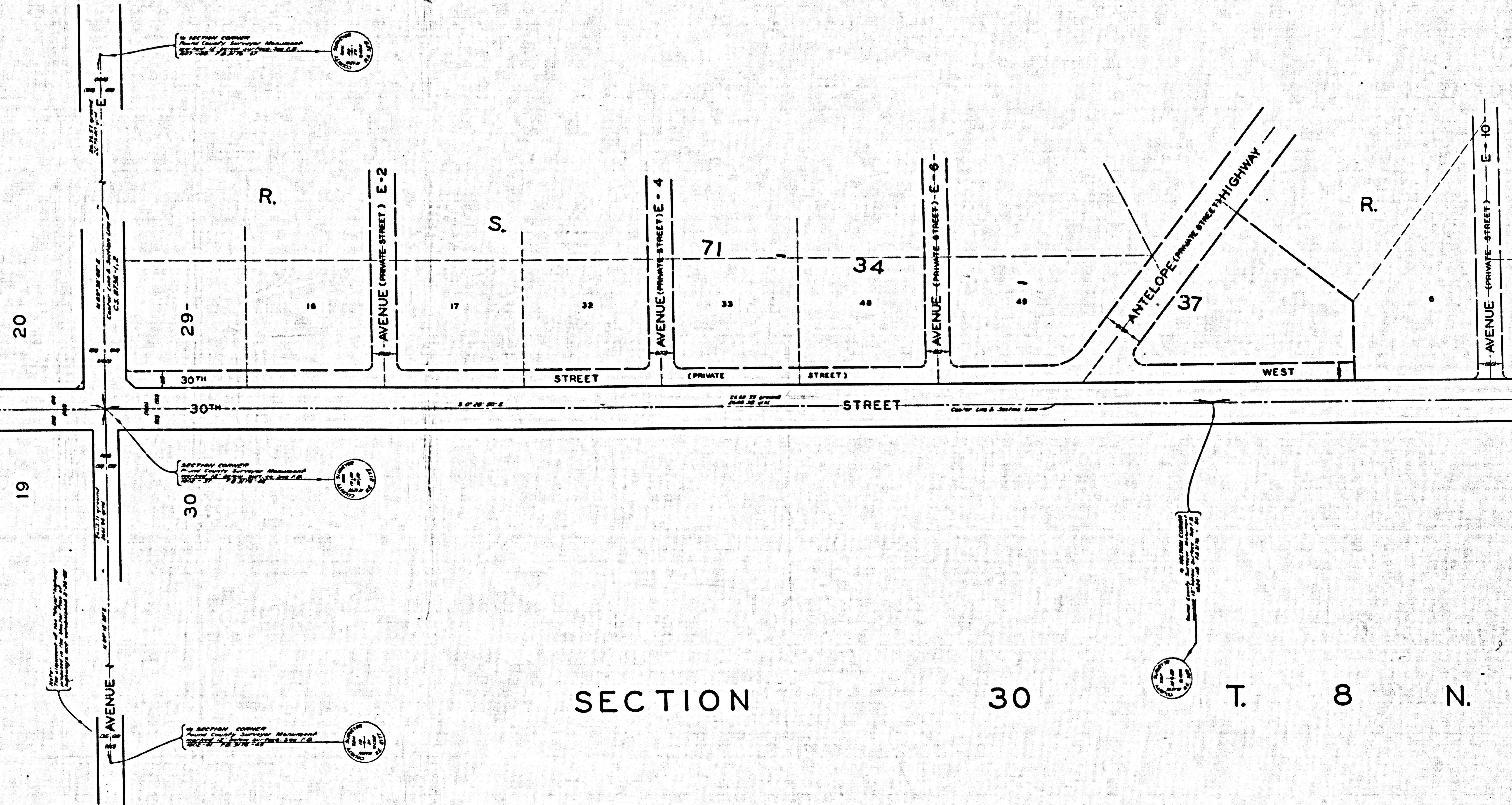
CSB-2917-7
 A1 OF A3

IM 71

NOTE:
 DISTANCE MEASUREMENTS SHOWN HEREON WERE OBTAINED BY THE GEODIMETER,
 AN ELECTRO-OPTICAL MEASURING DEVICE DATA RECORDED IN FB.3603 & FB.3604
 Ground distances called May 1964 by R.S.B.

12 W.

12 W.



SECTION

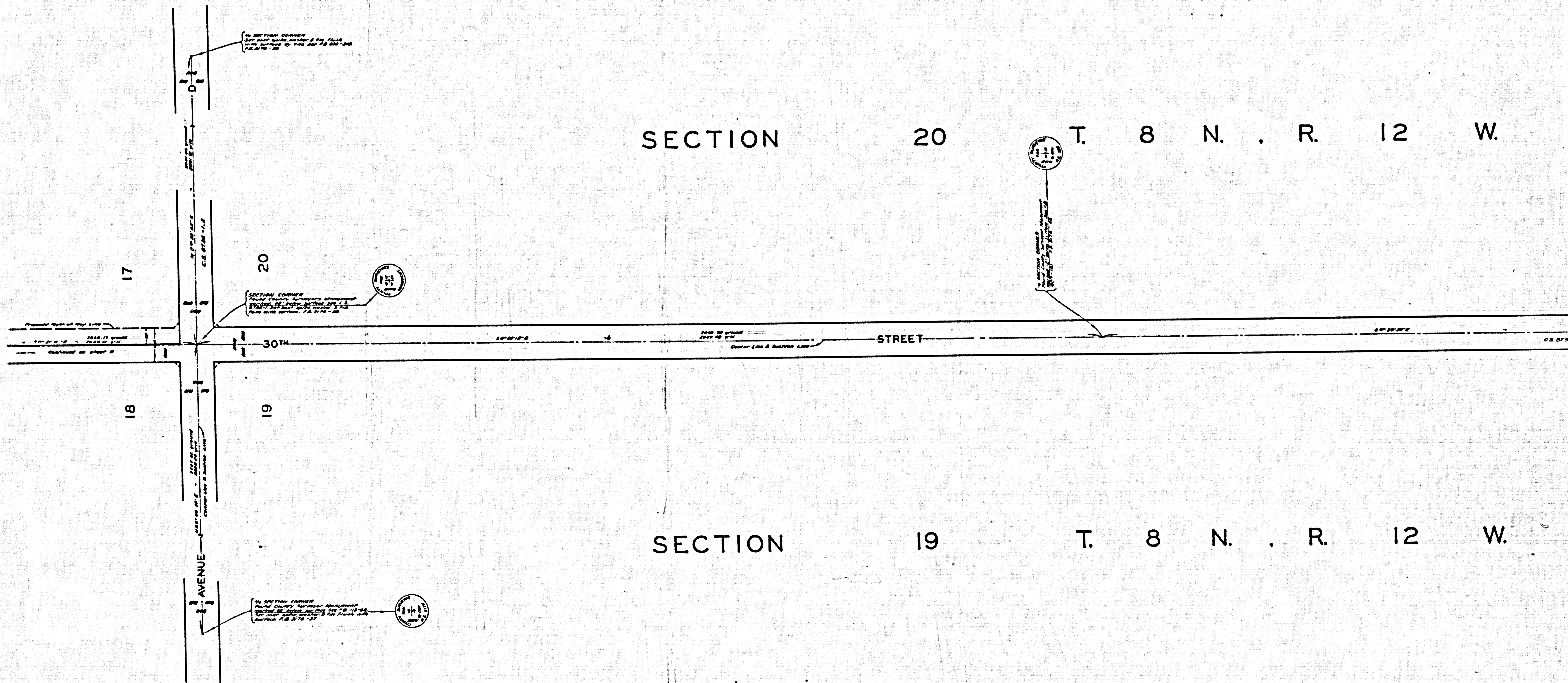
30

T.

8

N.

CSB-2917-7
A2 OF A3



CSB2917-7
 A30FA3