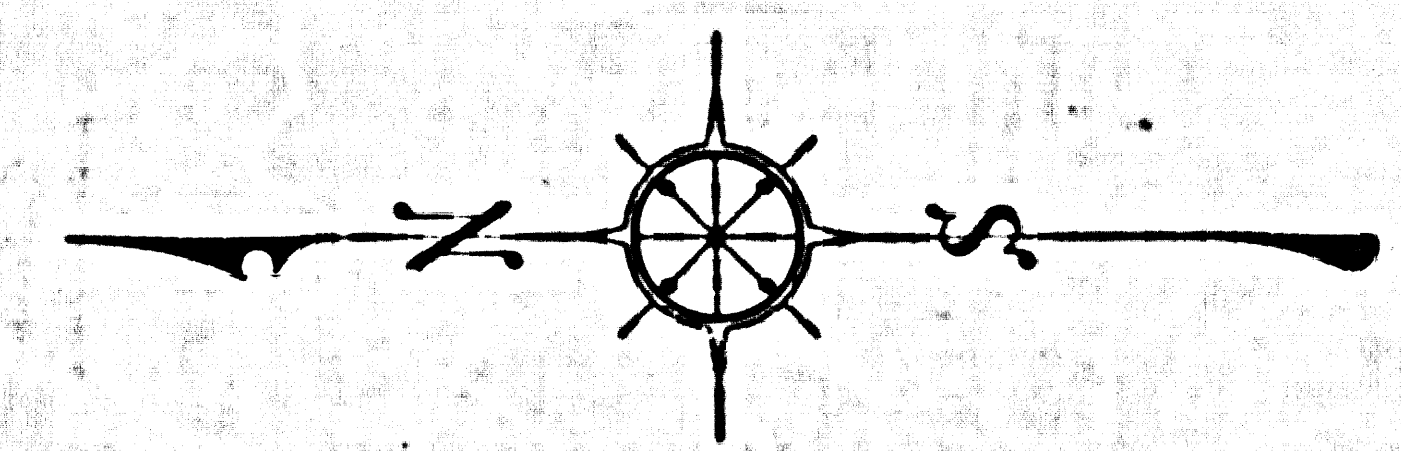
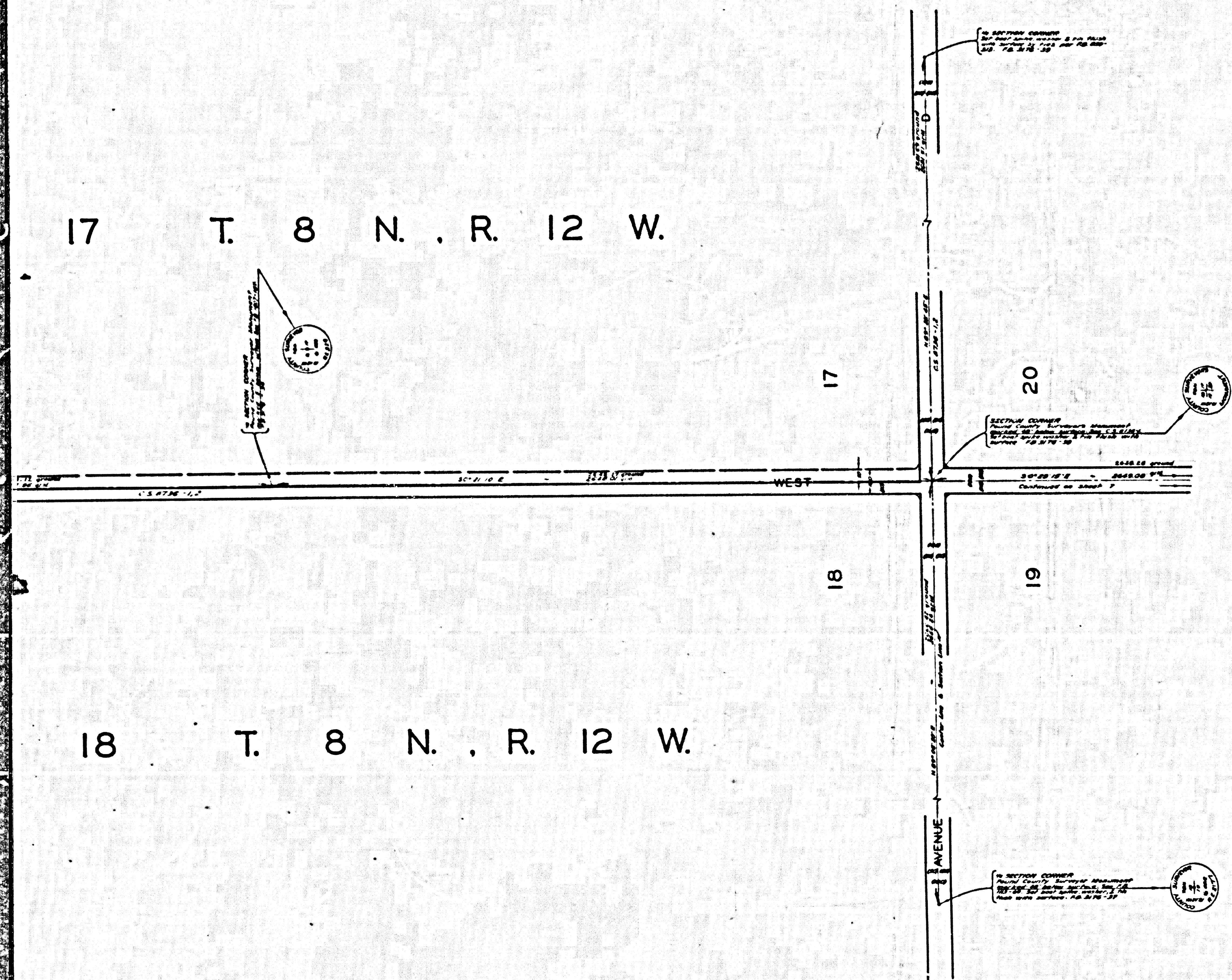


17 T. 8 N. R. 12 W.

18 T. 8 N. R. 12 W.



COUNTY OF LOS ANGELES  
 MAP OF  
**30<sup>TH</sup> STREET WEST**  
 FROM  
 CITY RANCH ROAD  
 TO  
 AVENUE A  
 COUNTY SURVEYORS MAP NO. B-2917  
 SHEET NO. 8 OF 8 SHEETS  
 SCALE: 1 INCH = 200 FT.

JOB NUMBER 0095.96  
 JOHN A. LAMBIE - COUNTY ENGINEER  
 SURVEYED APRIL - JULY, 1964  
 SURVEYED ON REQUEST OF THE REGIONAL  
 PLANNING COMMISSION UNDER SEC. 78  
 ORD. 4099, BY LETTERS DATED FEB. 14, 1962  
 & MARCH 18, 1964, AND BY BOARD ORDER  
 DATED DEC. 11, 1951  
 BEARINGS ARE BASED ON THE CALIFORNIA  
 COORDINATE SYSTEM ZONE 7, PER SEC. 8809  
 PUBLIC RESOURCES CODE SEE C.S. 9-423  
 F.B. 3176 - 11 - 136  
 FIELD WORK BY ..... G. E. DRIER  
 ..... C. H. LIND  
 OFFICE WORK BY ..... G. H. BOYER  
 ..... R. S. DOWNS  
 CHECKED BY ..... M. E. AUSTIN

NOTE:  
 DISTANCE MEASUREMENTS SHOWN HEREON WERE OBTAINED BY THE GEODIMETER,  
 AN ELECTRO-OPTICAL MEASURING DEVICE DATA RECORDED IN F.B. 3603 & F.B. 3604  
 Ground distances dated May 1964 by G.E.D.

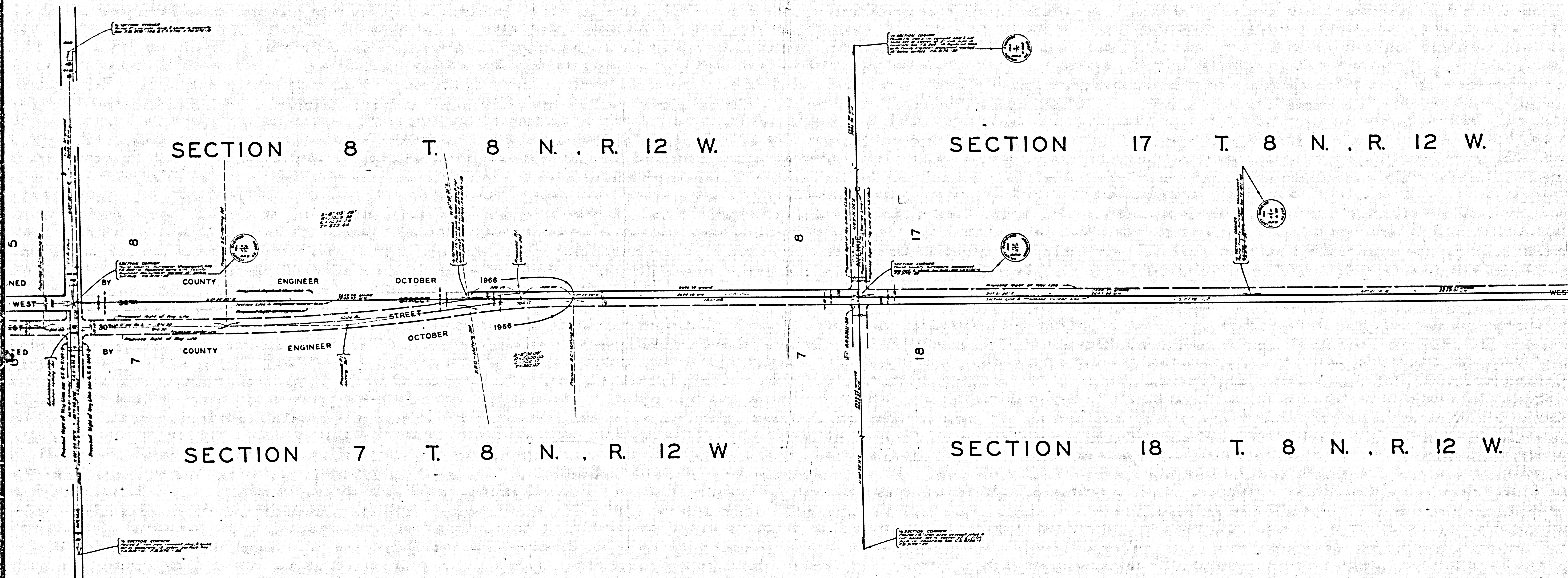
CSB-2917-8  
 A1 of A3

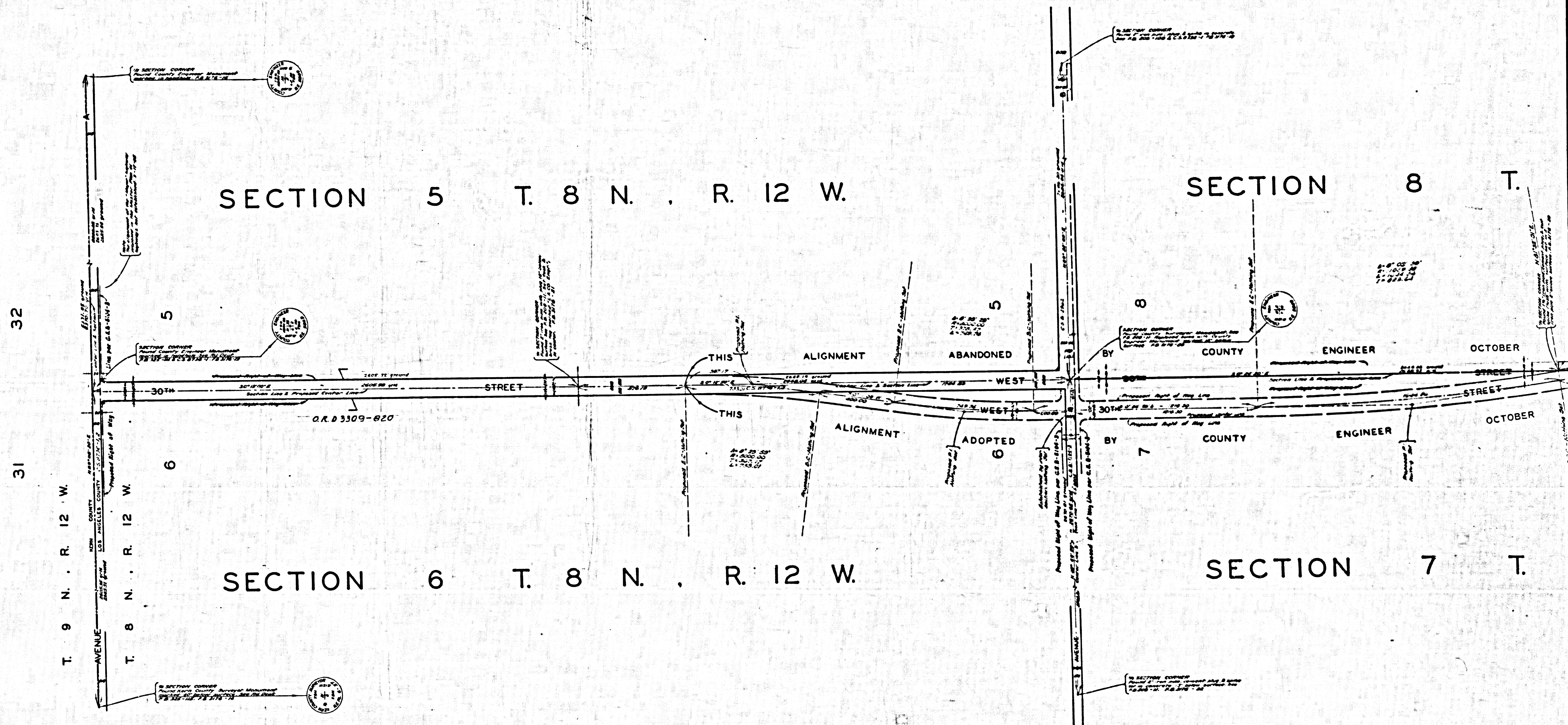
SECTION 8 T. 8 N. R. 12 W.

SECTION 17 T. 8 N. R. 12 W.

SECTION 7 T. 8 N. R. 12 W.

SECTION 18 T. 8 N. R. 12 W.





SHEET NO. 8 OF 8 SHEETS  
CONSULT SURVEYORS MAP NO. B-5911

CSB-2917-8  
A3 of A3