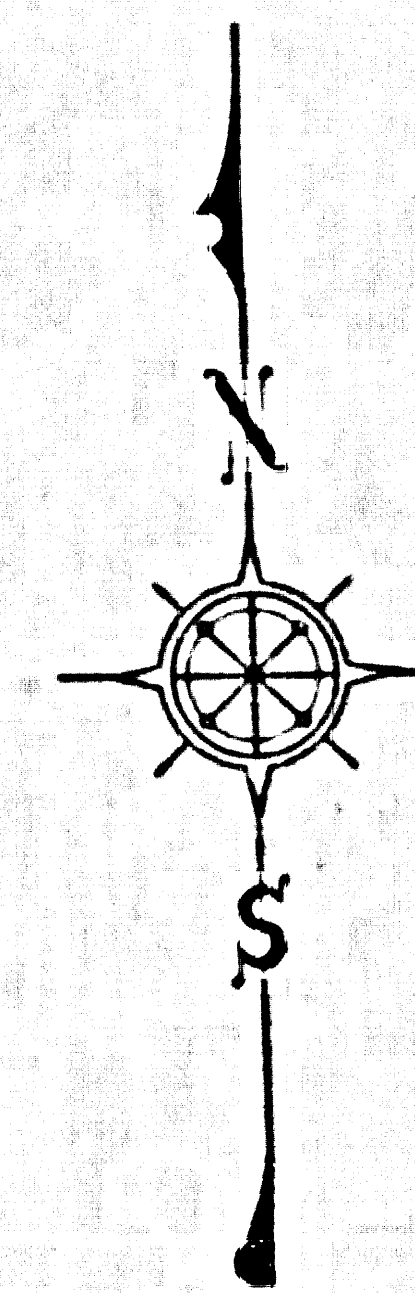
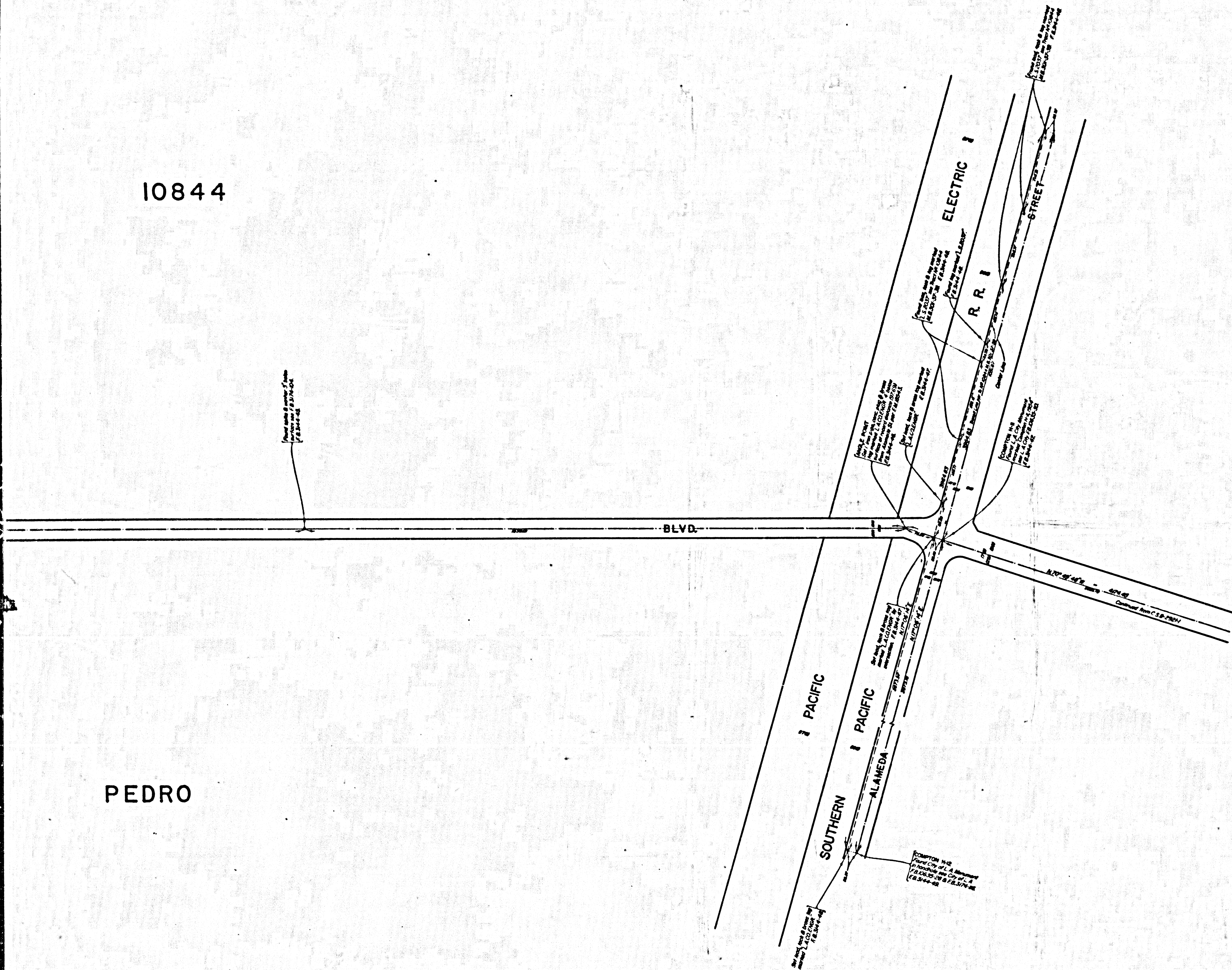


10844

PEDRO



COUNTY OF LOS ANGELES
 MAP OF
SEPULVEDA BLVD.
 FROM
 ALAMEDA STREET
 TO
 WILMINGTON AVE.
 COUNTY SURVEYORS MAP NO. B-2921
 SHEET NO. 2 OF 3 SHEETS
 SCALE:- 1 INCH = 100 FT.

JOB NUMBER 0096.51

JOHN A. LAMBIE - COUNTY ENGINEER
 SURVEYED JUNE - JULY 1966

SURVEYED ON REQUEST OF THE REGIONAL
 PLANNING COMMISSION UNDER SEC. 79,
 ORD. 4099, BY LETTER DATED DEC. 11, 1964
 AND BY BOARD ORDER DATED DEC. 11, 1951

BEARINGS ARE BASED ON THE CALIFORNIA
 COORDINATE SYSTEM ZONE 7 PER SEC. 8809
 PUBLIC RESOURCES CODE. SEE C.S. 9423.

F.B. 3144 - 41 - 72

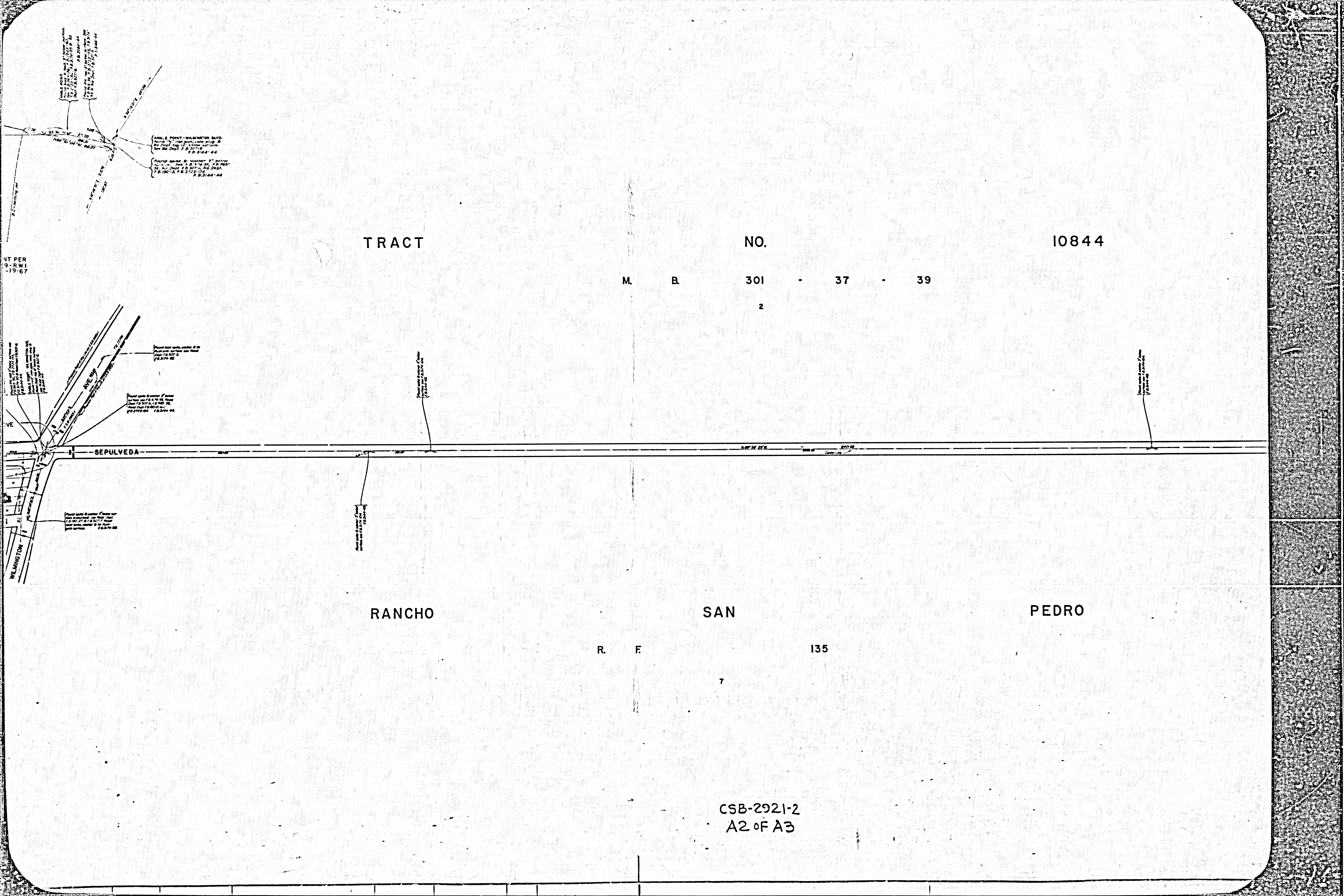
FIELD WORK BY.....E.T. MANKEY, JR.
 OFFICE WORK BY.....R.S. DOWNS
 CHECKED BY.....A.E. CART

Original Map of Wilmington Ave. Added 6-19-67 G.S.D.

JOHN A. LAMBIE
 COUNTY ENGINEER
 FILED Nov. 7, 1966
J. H. Miller DEPUTY

CSB2921-2
 A10FA3

L.M. 20



TRACT

NO.

10844

M. B. 301 - 37 - 39

2

RANCHO

SAN

PEDRO

R. F. 135

CSB-2921-2
A2 of A3

NT PER
9-RWI
-19-67

(ANGLE POINT - WILMINGTON BLVD.
Survey of 1st part, cont. of 1st
of 2nd part of 1st survey
See Rec. Dept. F. B. 207-18
P. B. 3164-44

(Second part of 1st survey of 1st
part of 1st part of 1st survey
See Rec. Dept. F. B. 207-18
P. B. 190-18, P. B. 2723-18
P. B. 3164-44

Point and corner of 1st
part of 1st part of 1st survey
See Rec. Dept. F. B. 207-18
P. B. 3164-44

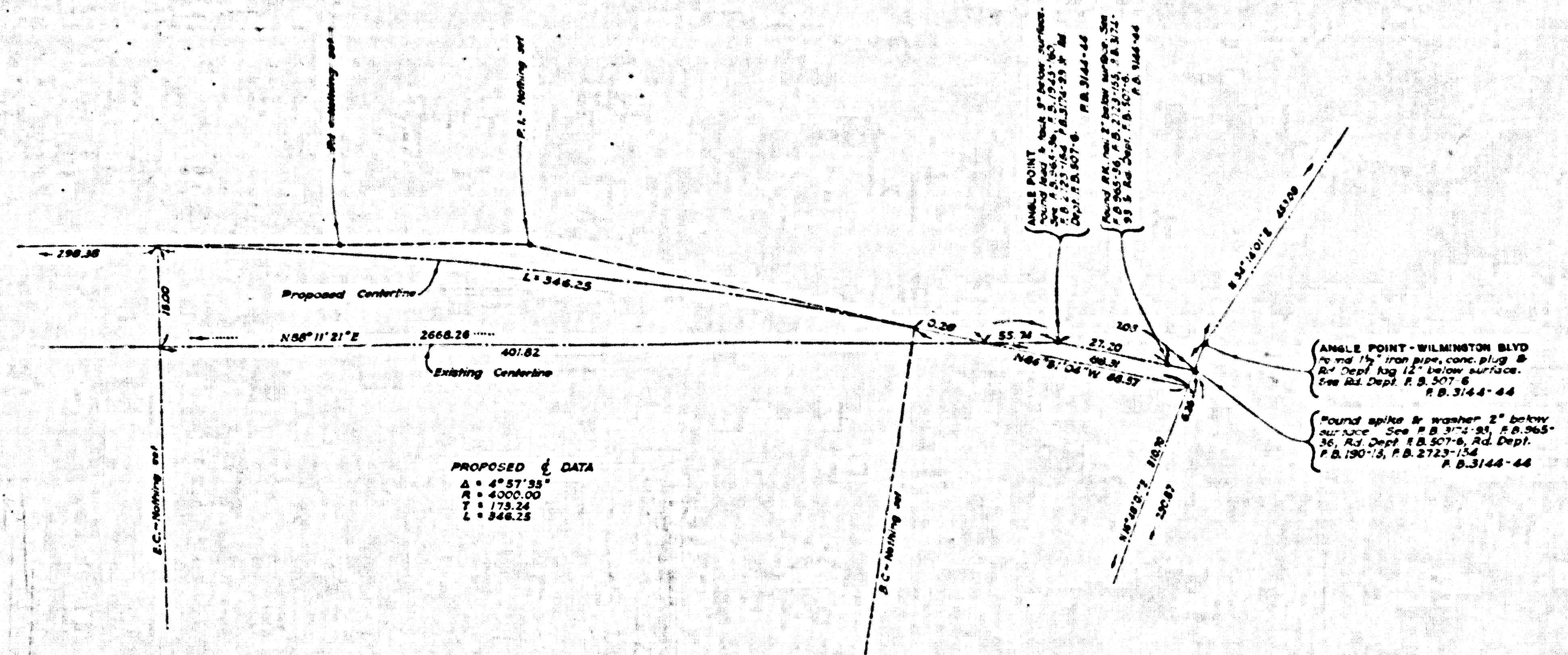
Point and corner of 1st
part of 1st part of 1st survey
See Rec. Dept. F. B. 207-18
P. B. 3164-44

Point and corner of 1st
part of 1st part of 1st survey
See Rec. Dept. F. B. 207-18
P. B. 3164-44

Point and corner of 1st
part of 1st part of 1st survey
See Rec. Dept. F. B. 207-18
P. B. 3164-44

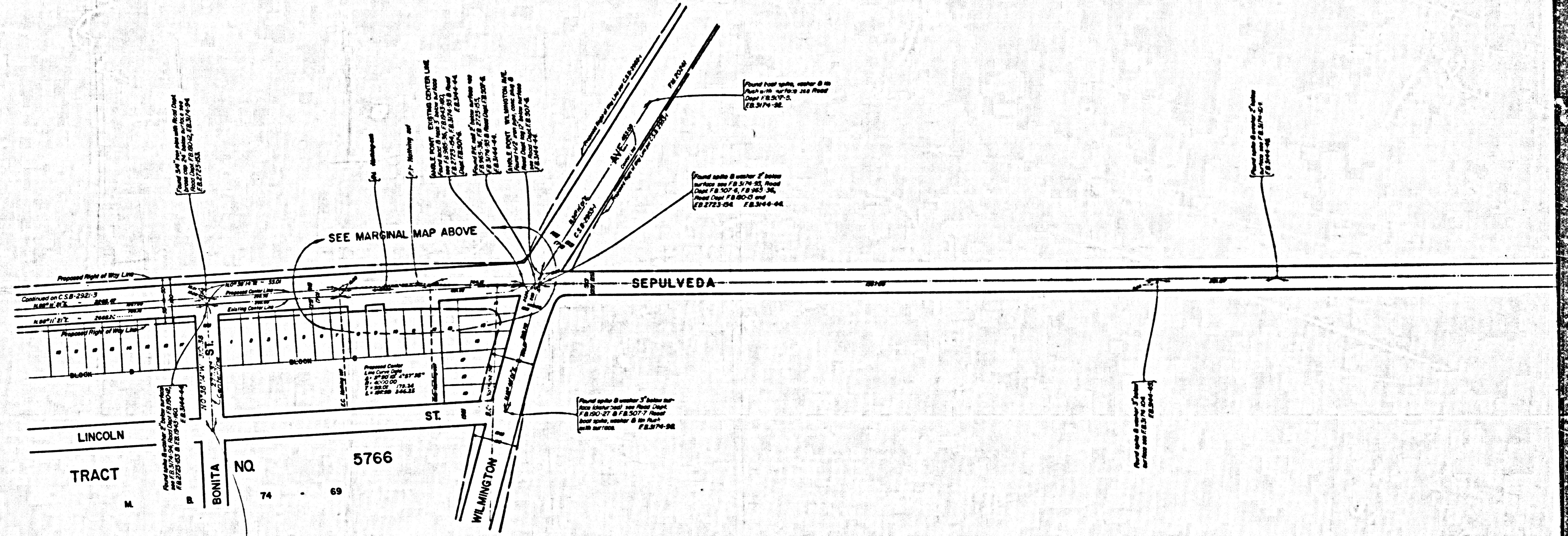
Point and corner of 1st
part of 1st part of 1st survey
See Rec. Dept. F. B. 207-18
P. B. 3164-44

Scale bar with markings for 0, 100, 200, 300, 400, 500 feet.



MARGINAL MAP
 (Not To Scale)
 SHOWING PROPOSED ALIGNMENT PER
 ROAD DEPT. MAP NO. J.N. 41529-R.W.I
 AS APPROVED BY I.E.C. ON 1-19-67
 Adopted by S.H.S. 6-16-67

TRACT



RANCHO

CSB-2921-2
A30FA 3