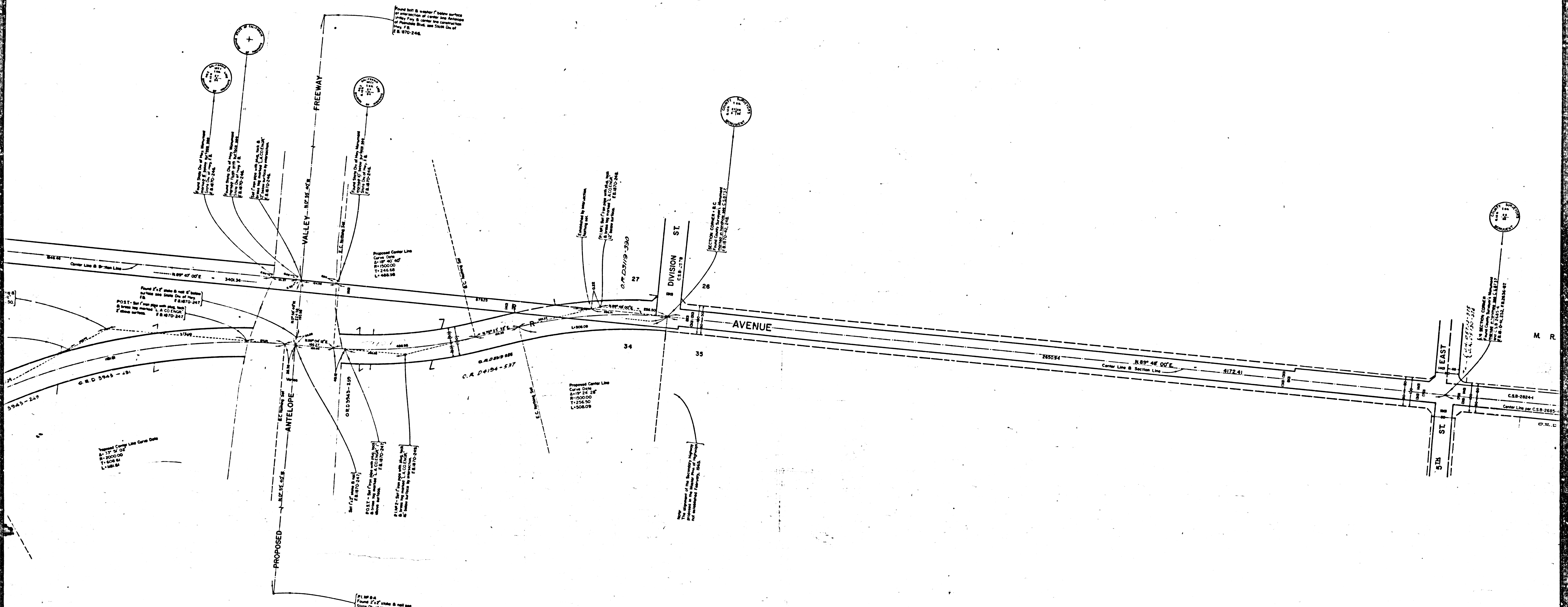


COUNTY OF LOS ANGELES
 MAP OF
AVENUE R
 FROM
 SIERRA HIGHWAY
 TO
 TENTH STREET WEST
 COUNTY SURVEYOR'S MAP NO. B-2923
 SCALE 1" = 100 FT.

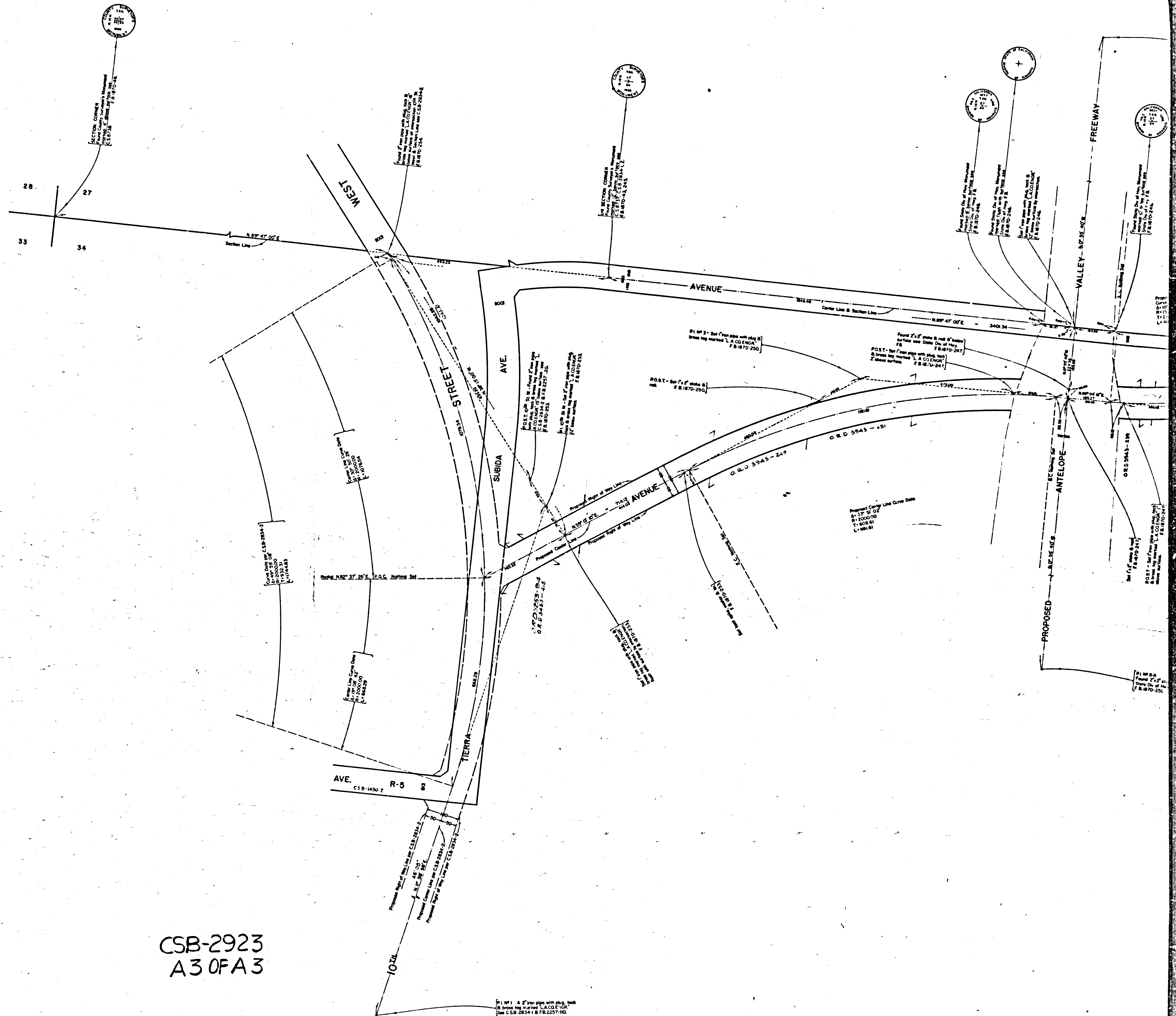
JOB NUMBER 0075.58
 JOHN A. LAMBIE - COUNTY ENGINEER
 SURVEYED OCTOBER 1955 & JANUARY 1965
 SURVEYED ON REQUEST OF THE REGIONAL
 PLANNING COMMISSION UNDER SEC 79, ORD
 4099, BY LETTER DATED AUGUST 24, 1956
 AND BY BOARD ORDER DATED DEC. 11, 1951
 BEARINGS ARE BASED ON THE BEARING OF
 AVENUE R AS SHOWN ON C.S.B. 2685-4
 F.B. 1870-39-46, 243-254
 FIELD WORK BY..... J. C. PIERCE
 J. S. COATES
 OFFICE WORK BY..... J. J. EDWARDS
 CHECKED BY..... H. E. AUSTIN

CSB-2923
 A10FA3

IM 65



CSB-2923
A20FA3



CSB-2923
A30FA3

PL. 1/4" = 1' 2" from plat with plat, 2001
to be used by Surveyor, L.A. CO. DIST. 1
See CSB 28341 & FR 2257-10

PL. 1/4" = 1' 2" from plat with plat, 2001
to be used by Surveyor, L.A. CO. DIST. 1
See CSB 28341 & FR 2257-10

PL. 1/4" = 1' 2" from plat with plat, 2001
to be used by Surveyor, L.A. CO. DIST. 1
See CSB 28341 & FR 2257-10

PL. 1/4" = 1' 2" from plat with plat, 2001
to be used by Surveyor, L.A. CO. DIST. 1
See CSB 28341 & FR 2257-10

PL. 1/4" = 1' 2" from plat with plat, 2001
to be used by Surveyor, L.A. CO. DIST. 1
See CSB 28341 & FR 2257-10

Proposed Right of Way Line for CSB 2923-1
A 1/2" = 1' 2" = 1' 2"
Proposed Center Line for CSB 2923-2
Proposed Right of Way Line for CSB 2923-2

Proposed Right of Way Line for CSB 2923-1
A 1/2" = 1' 2" = 1' 2"
Proposed Center Line for CSB 2923-2
Proposed Right of Way Line for CSB 2923-2

Proposed Right of Way Line for CSB 2923-1
A 1/2" = 1' 2" = 1' 2"
Proposed Center Line for CSB 2923-2
Proposed Right of Way Line for CSB 2923-2

Proposed Right of Way Line for CSB 2923-1
A 1/2" = 1' 2" = 1' 2"
Proposed Center Line for CSB 2923-2
Proposed Right of Way Line for CSB 2923-2

Proposed Right of Way Line for CSB 2923-1
A 1/2" = 1' 2" = 1' 2"
Proposed Center Line for CSB 2923-2
Proposed Right of Way Line for CSB 2923-2

Proposed Right of Way Line for CSB 2923-1
A 1/2" = 1' 2" = 1' 2"
Proposed Center Line for CSB 2923-2
Proposed Right of Way Line for CSB 2923-2

Proposed Right of Way Line for CSB 2923-1
A 1/2" = 1' 2" = 1' 2"
Proposed Center Line for CSB 2923-2
Proposed Right of Way Line for CSB 2923-2