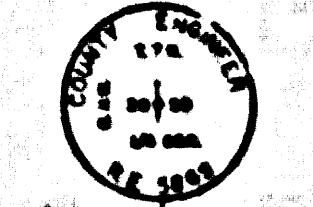


7 N. R. II W.  
S. B. M.

30

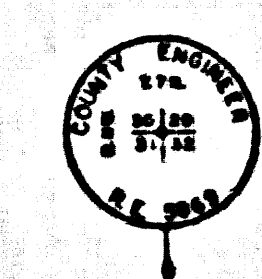
7 N. R. II W.  
S. B. M.

31

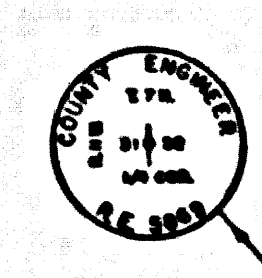


THE COUNTY ENGINEER HAS REVIEWED THIS MAP AND CERTIFIES THAT IT IS A TRUE AND CORRECT REPRESENTATION OF THE SURVEY DATA SUBMITTED TO HIM.

THE COUNTY ENGINEER HAS REVIEWED THIS MAP AND CERTIFIES THAT IT IS A TRUE AND CORRECT REPRESENTATION OF THE SURVEY DATA SUBMITTED TO HIM.



THE COUNTY ENGINEER HAS REVIEWED THIS MAP AND CERTIFIES THAT IT IS A TRUE AND CORRECT REPRESENTATION OF THE SURVEY DATA SUBMITTED TO HIM.



THE COUNTY ENGINEER HAS REVIEWED THIS MAP AND CERTIFIES THAT IT IS A TRUE AND CORRECT REPRESENTATION OF THE SURVEY DATA SUBMITTED TO HIM.

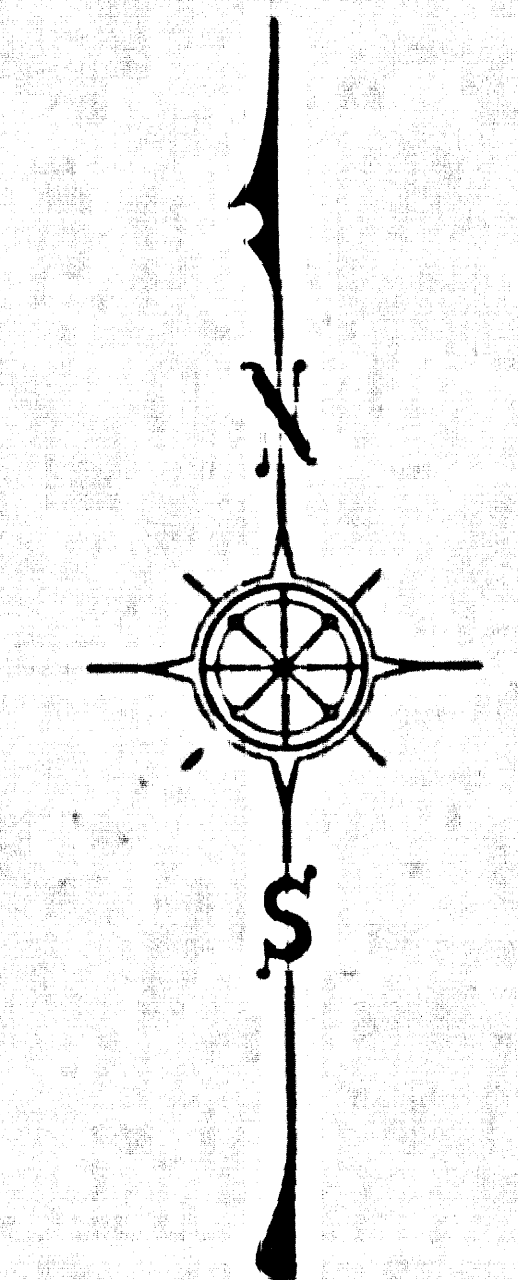
EAST

STREET

30<sup>TH</sup>

O.R.D. 2688 - 593

N 89° 46' 30" E 2908.20  
Continued from C.S.B. 2927-2



COUNTY OF LOS ANGELES  
MAP OF  
**AVENUE L**  
FROM  
70<sup>TH</sup> STREET EAST  
TO  
90<sup>TH</sup> STREET WEST  
COUNTY SURVEYOR'S MAP NO. B-2927  
SHEET NO. 3 OF 8 SHEETS  
SCALE: 1 INCH = 100 FT.

JOB NUMBER 0095.47  
JOHN A. LAMBIE - COUNTY ENGINEER  
SURVEYED 1954, 1961, 1962, 1964  
SURVEYED ON REQUEST OF THE REGIONAL  
PLANNING COMMISSION UNDER SEC. 79,  
ORD. 4099, BY LETTER DATED SEPT. 15, 1964  
AND BY BOARD ORDER DATED DEC. 11, 1961  
BEARINGS ARE BASED ON THE BEARING OF  
AVENUE L AS SHOWN ON C.S.B. 2914-1

FB1902, FB2144, FB2223, FB3176, FB3221  
FIELD WORK BY..... W. C. MACK  
..... S. COATES  
..... C. K. LIND  
..... J. MENDONCA  
OFFICE WORK BY..... J. J. EDWARDS  
CHECKED BY..... W. J. BRENNER

CSB-2927-3  
A10FA3

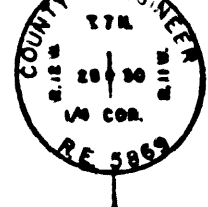
IM 70



SECTION

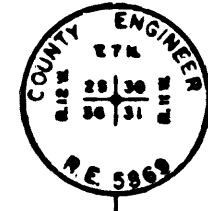
30

T. 7 N., R. 11 W.  
S. B. M.



SECTION CORNER  
Joint County of Grant & Lincoln  
Plat 103-11, 103-12, 103-13, 103-14  
1882-1883

EAST



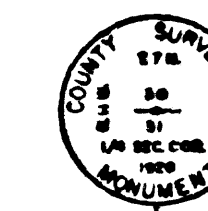
SECTION CORNER  
Joint County of Grant & Lincoln  
Plat 103-11, 103-12, 103-13, 103-14  
1882-1883

STREET

25

30

O. R. D 4069-156



SECTION CORNER  
Joint County of Grant & Lincoln  
Plat 103-11, 103-12, 103-13, 103-14  
1882-1883

Note: The corner of the Section Highway 20th St. is located at the corner of Highway 20th St. & Highway 10th St.

5 89° 44' 00" W 266703

102° 07' 25" W

267470

5 89° 24' 00" W

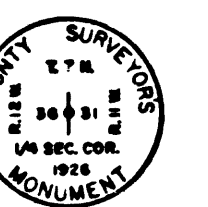
534833

C.S.B-934-2

R. 12 W.

R. 11 W.

20th



SECTION CORNER  
Joint County of Grant & Lincoln  
Plat 103-11, 103-12, 103-13, 103-14  
1882-1883

SECTION CORNER  
Joint County of Grant & Lincoln  
Plat 103-11, 103-12, 103-13, 103-14  
1882-1883

36

31

10.00

1/4 SECTION 36  
N., R. 12 W.  
S. B. M.

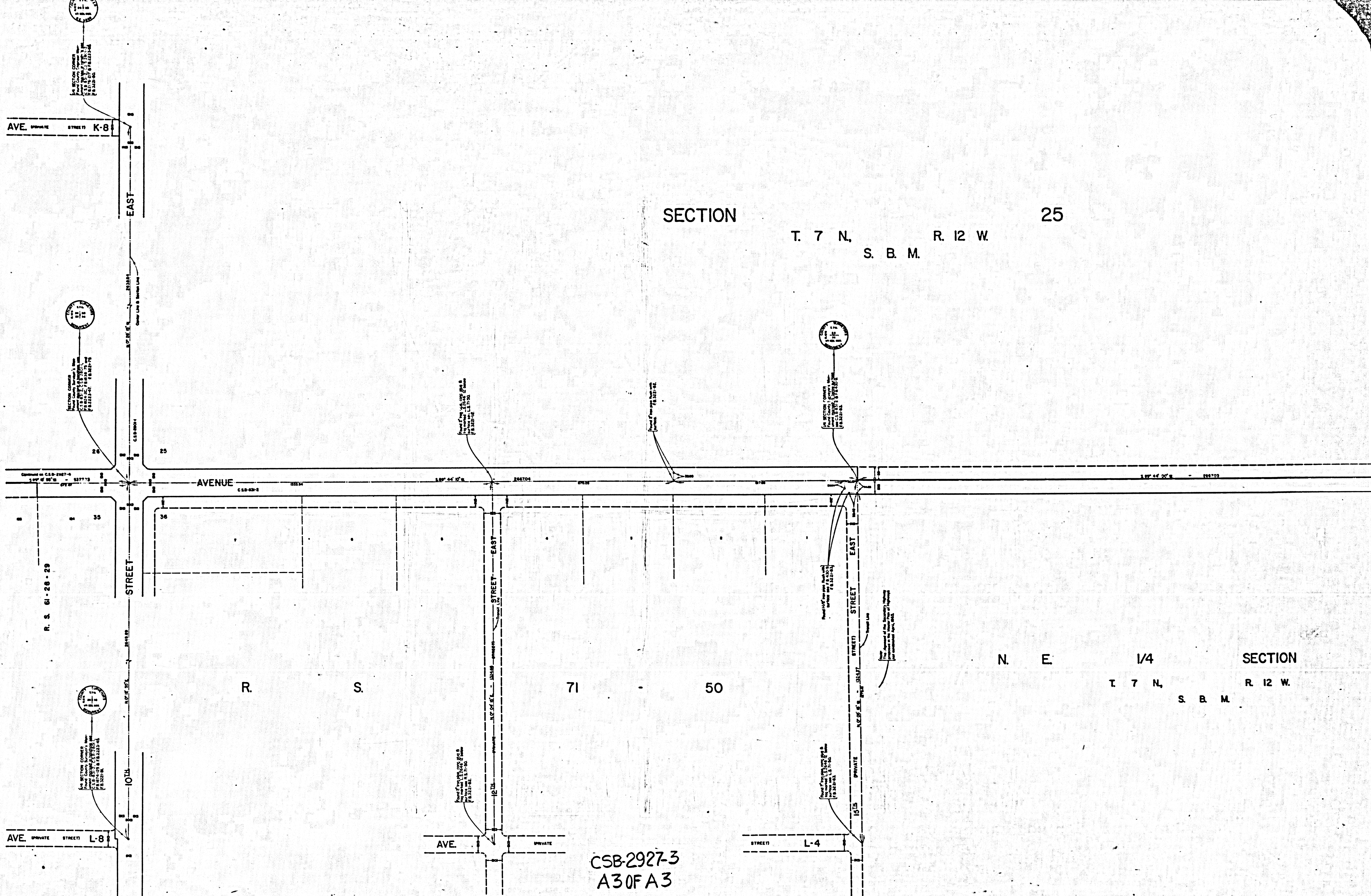
SECTION

31

T. 7 N., R. 11 W.  
S. B. M.

CSB-2927-3  
A20FA3





SECTION 25  
T. 7 N., R. 12 W.  
S. B. M.

SECTION N.E. 1/4  
T. 7 N., R. 12 W.  
S. B. M.

CSB-2927-3  
A30FA3

AVE. PRIVATE STREET K-8

EAST

AVENUE

STREET

R. S. 61-28-29

AVE. PRIVATE STREET L-8

10th

AVE PRIVATE

STREET EAST

STREET EAST

15th PRIVATE

STREET L-4