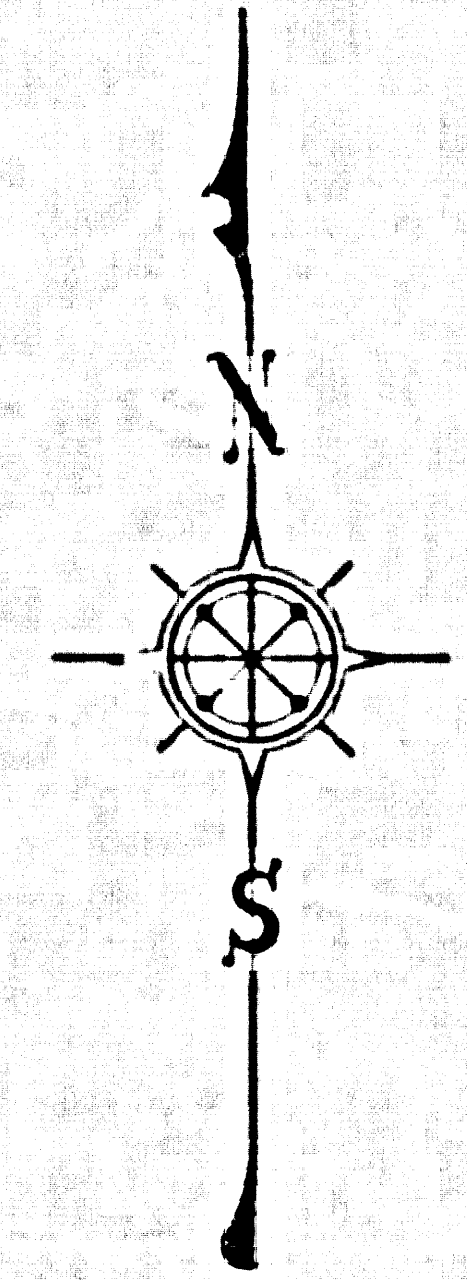
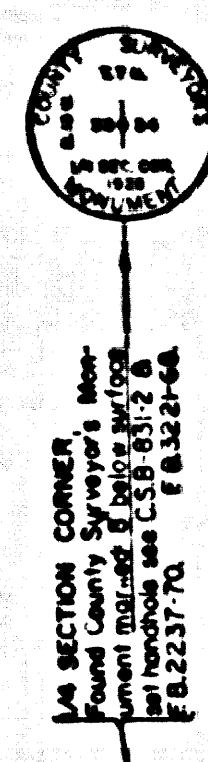
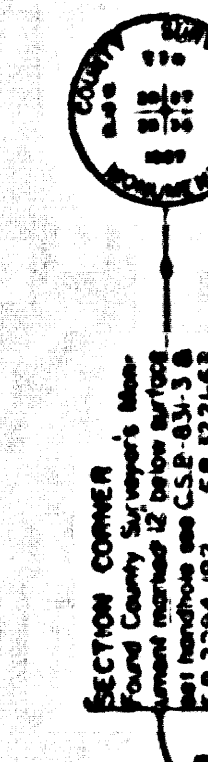
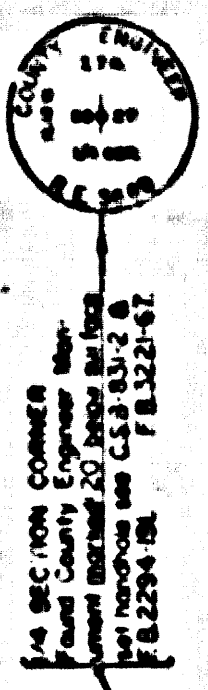
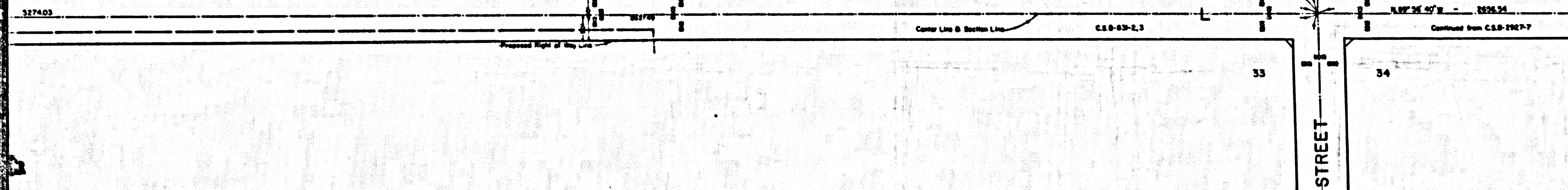


28

R. 13 W

Section 28, Township 13 North, Range 13 West, San Bernardino County, California



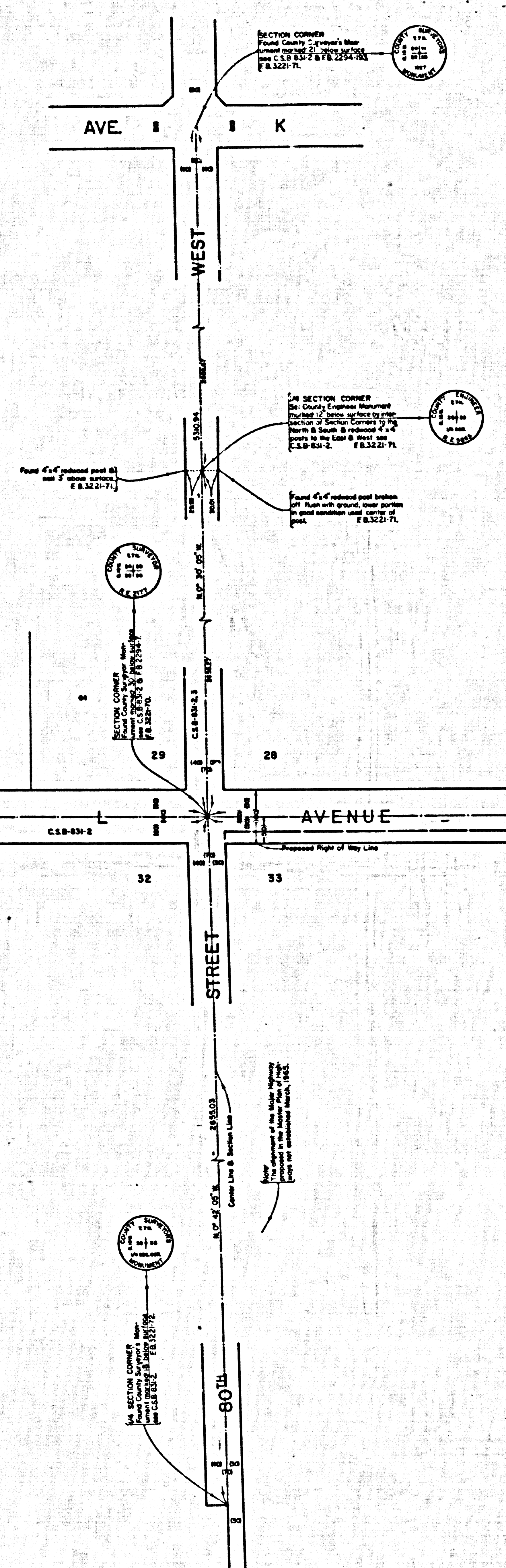
COUNTY OF LOS ANGELES
 MAP OF
AVENUE L
 FROM
 70TH STREET EAST
 TO
 90TH STREET WEST
 COUNTY SURVEYOR'S MAP NO. B-2927
 SHEET NO. 8 OF 8 SHEETS
 SCALE - 1 INCH = 100 FT

JOB NUMBER 0095.47
 JOHN A. LAMBIE - COUNTY ENGINEER
 SURVEYED 1954, 1961, 1962, 1964
 SURVEYED ON REQUEST OF THE REGIONAL
 PLANNING COMMISSION UNDER SEC. 79,
 ORD. 4099, BY LETTER DATED SEPT. 15, 1964
 AND BY BOARD ORDER DATED DEC. 11, 1964
 BEARINGS ARE BASED ON THE BEARING OF
 AVENUE L AS SHOWN ON C.S.B.-2914-1
 FB.1802, FB.2144, FB.2223, FB.3176, FB.3221
 FIELD WORK BY..... W. C. MACK
 S. COATES
 C. K. LIND
 J. MENDONCA
 OFFICE WORK BY..... J. J. EDWARDS
 CHECKED BY..... W. J. BRENNER

IM 71

CSB-2927-8
A10FA3

TRACT



SECTION 28

T 7 N, R 13 W
S. B. M.

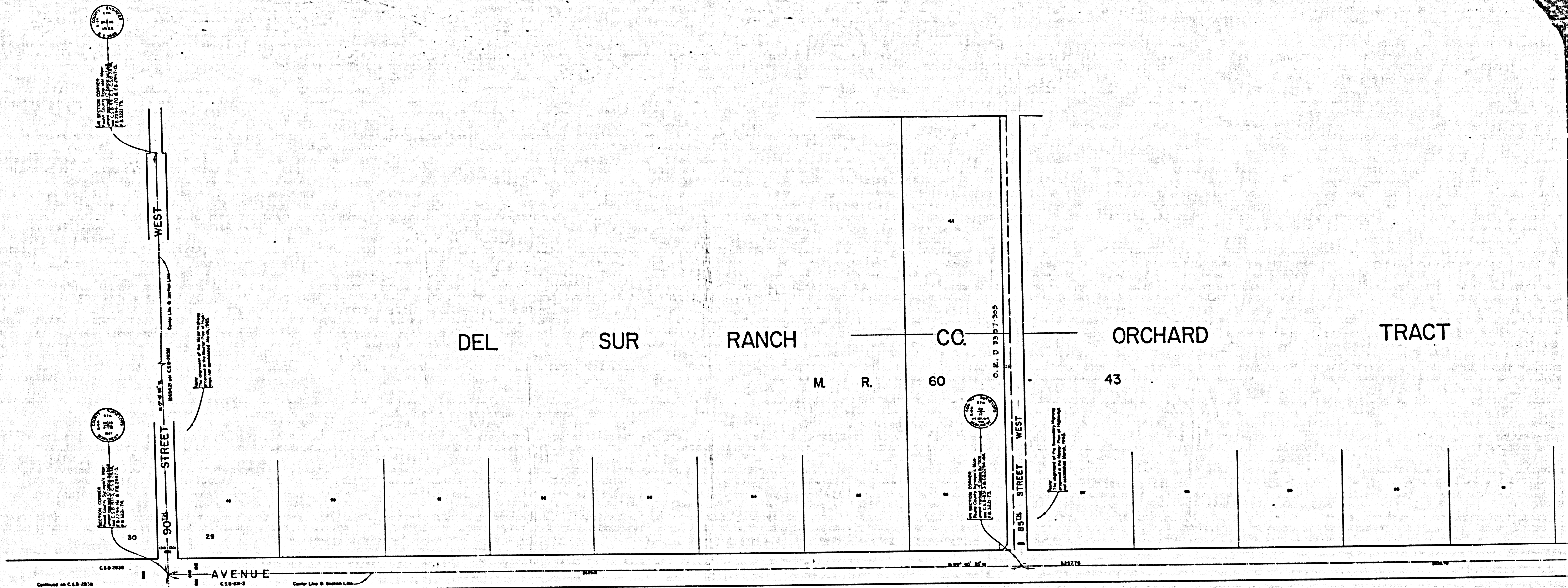
AVENUE

STREET

SECTION 33

T 7 N, R 13 W
S. B. M.

CSB-2927-8
A20FA3



SECTION

32

T. 7 N., R. 13 W.
S. B. M.

CSB-2927-8
A30FA 3