

SAN PEDRO

R.F. 500 C.F. 118 C.F. 145

35

0

1

2

3

4

5

6

7

8

9

10

11

12

13

14

15

16

17

18

TRACT NO. 3461

M.B. 38 - 87

A

SAN PEDRO

119 - 121

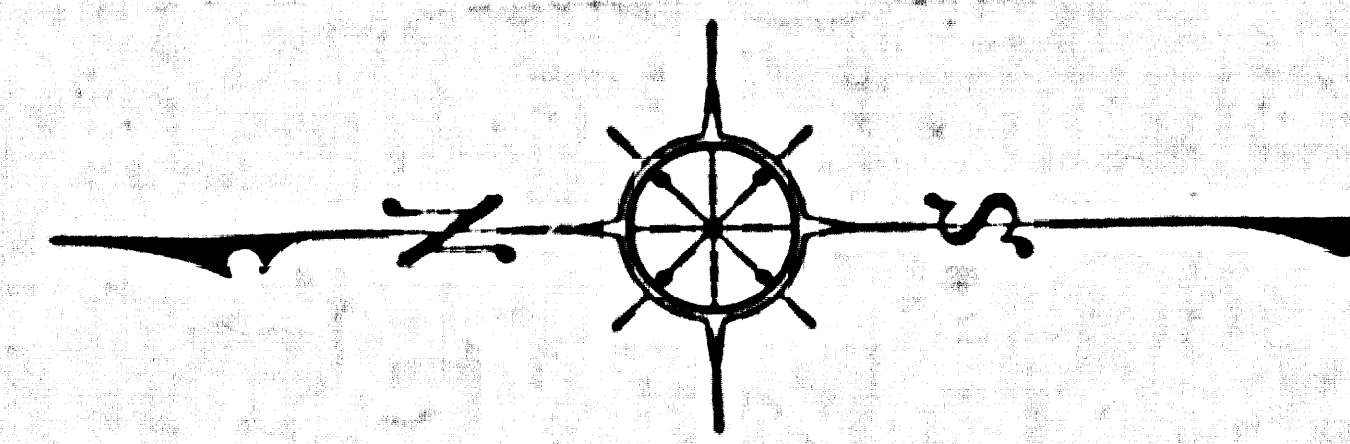
A PORTION OF RANCHO SAN PEDRO R. 1-119-121

TRACT NO. 18482

METTLETT AVE. M.B. 479-1-3

VICTORIA

ARTESIA



COUNTY OF LOS ANGELES
 MAP OF
AVALON BOULEVARD
 FROM
VICTORIA STREET
 TO
ALONDRA BOULEVARD
 COUNTY SURVEYORS MAP NO. B-2929
 SCALE: 1 INCH=100 FT.

JOB NUMBER 0095.94

JOHN A. LAMBIE - COUNTY ENGINEER
 SURVEYED OCTOBER 18, 1964 TO DECEMBER 23, 1964.

SURVEYED ON REQUEST OF THE REGIONAL
 PLANNING COMMISSION UNDER SEC. 79,
 ORD. 4099, BY LETTER DATED OCT. 17, 1963
 AND BY BOARD ORDER DATED DEC. 11, 1961.

BEARINGS ARE BASED ON THE CALIFORNIA
 COORDINATE SYSTEM ZONE 7, PER SEC. 8509
 PUBLIC RESOURCES CODE. SEE C.S. 9423

F.B. 3121-101-125, F.B. 3189-13-15, 30 & F.B. 3215-7-15

FIELD WORK BY A.S. CURTIS
 OFFICE WORK BY S. SHINODA
 CHECKED BY H.E. AUSTIN

IM 26

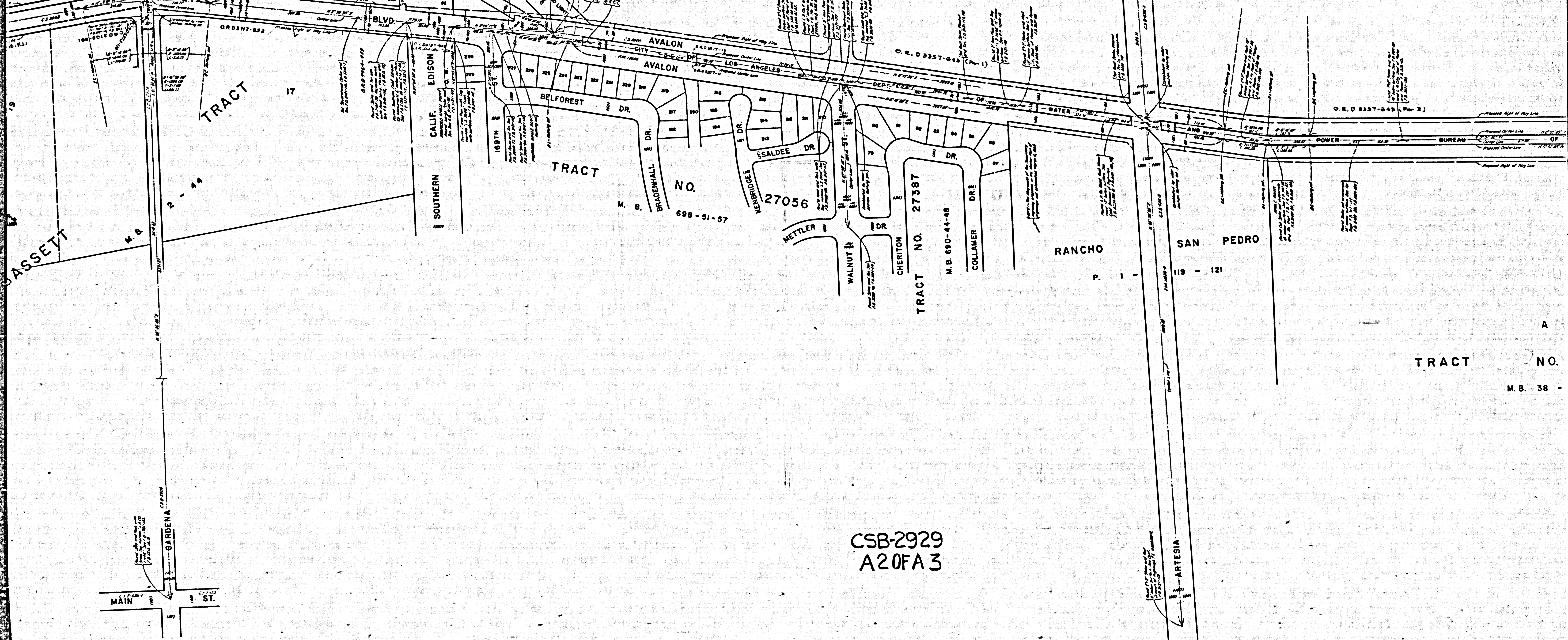
CSB-2929
 A10FA3

LOT 4
8
M.R. 4-348
RANGE 3
HAYWARD TRACT

RANCHO

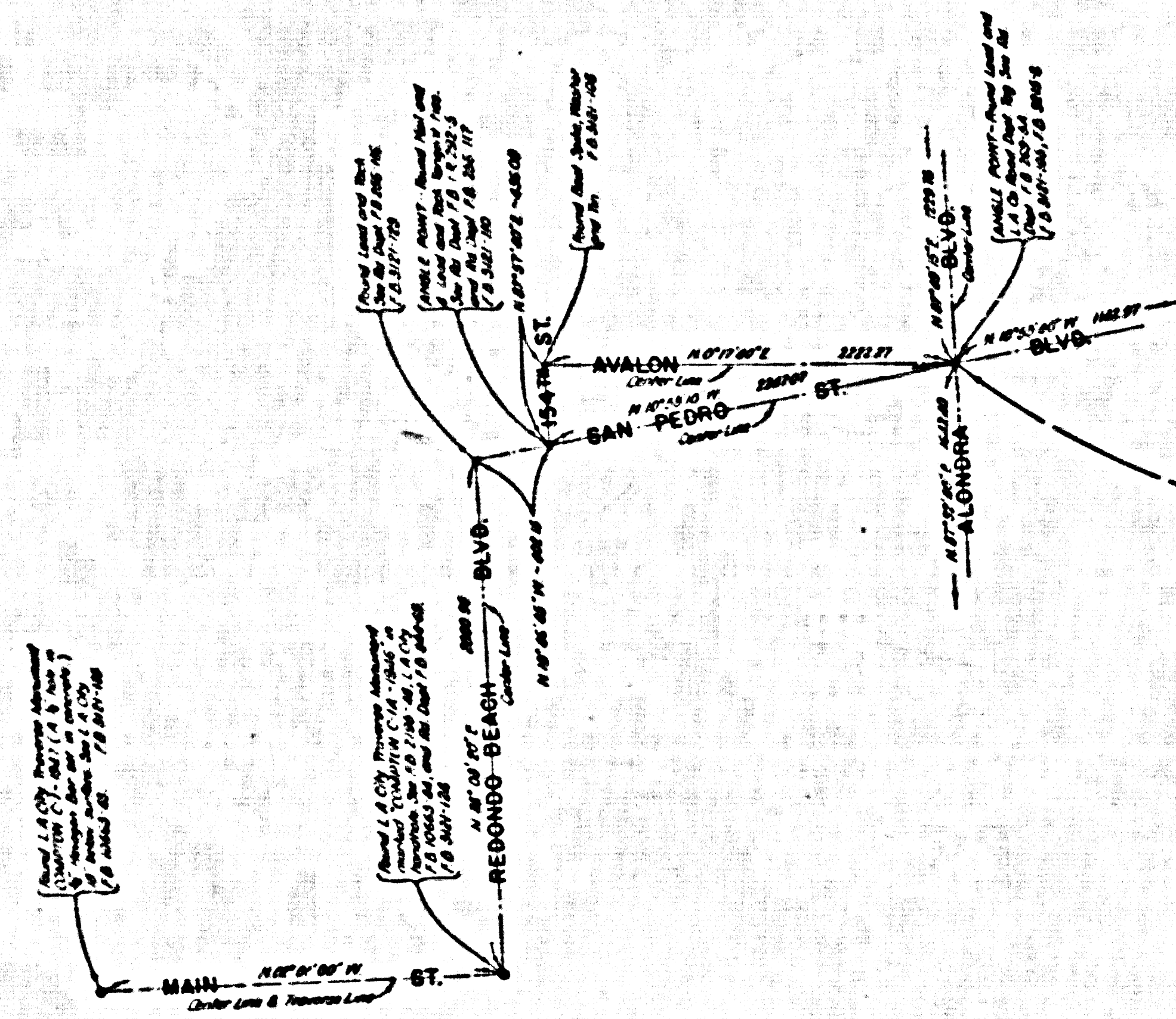
SAN PEDRO

P. 1 - 119 - 121 F.M. 15172 R.F. 135 R.F. 500 C.F. 118 C.F. 145



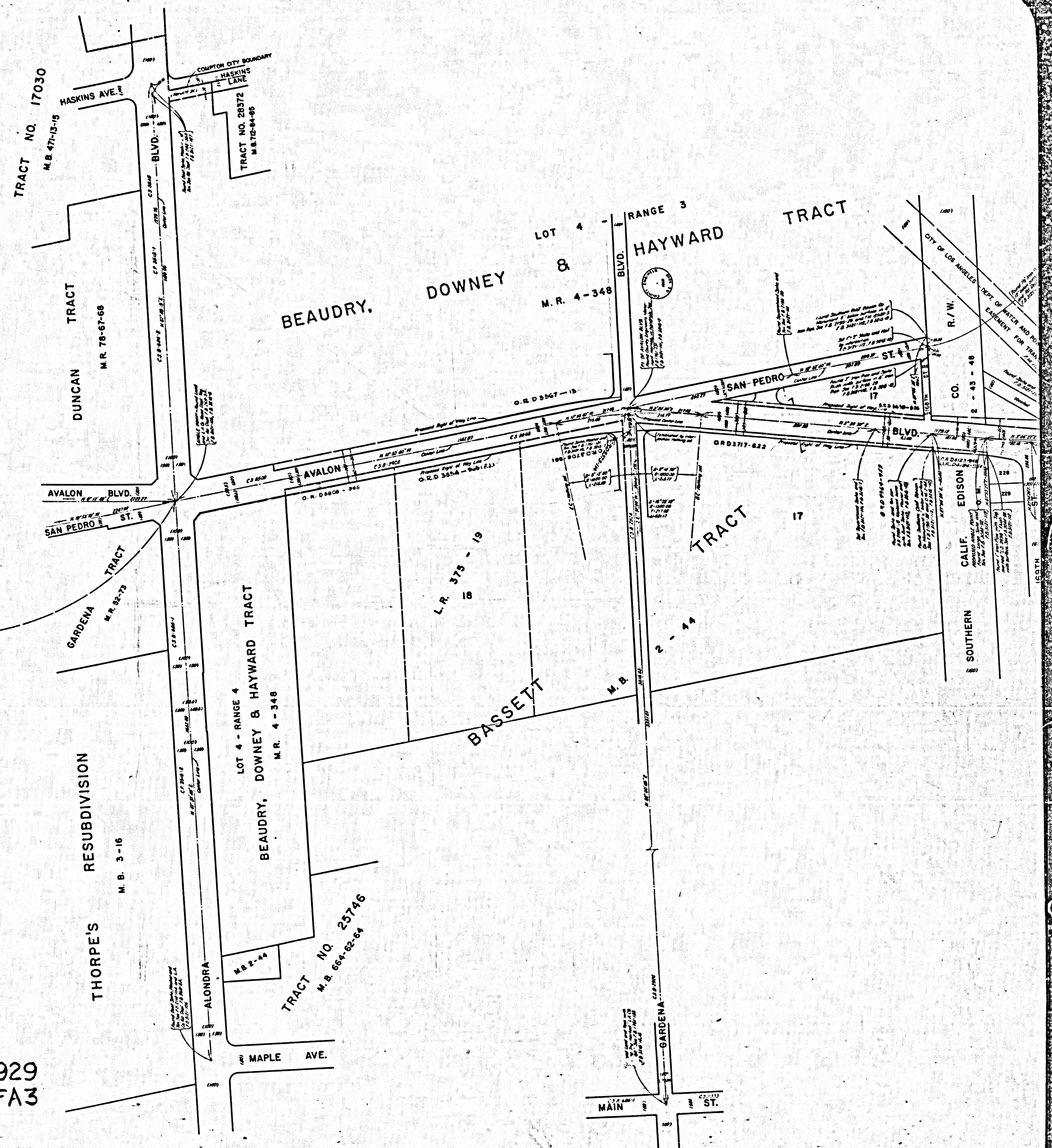
CSB-2929
A20FA3

TRACT NO.
M.B. 38 -



MARGINAL MAP
 SHOWING SURVEYED RELATIONSHIP OF
 THIS SURVEY TO CALIFORNIA COORDINATE
 SYSTEM, ZONE 7.
 SCALE 1" = 600'

CSB-2929
 A30FA3



100TH