

Found spike, washer and nut flush with surface. See F.B. 3213-28, L.A. City F.B. 107-12. Reestablish same with steel spike, washer and nut flush with surface. F.B. 3213-28

51<sup>ST</sup> ST.

57<sup>TH</sup> ST.

TRACT

POINDEXTER AND  
NEWMARK'S TRACT  
M. B. 11 - 45

HAY TRACT  
ADDITION TO NADEAU PARK  
M. R. 29 - 2

BANDERA ST. I

LOT 1

AVE.

S.E. 1/4 SEC. 16, T.2S., R.13W.

RAILWAY

BOUNDARY CITY OF LOS ANGELES

LOT 2

S.W. 1/4 SEC. 16, T.2S., R.13W.

AVE.

TRACT

HUNTINGTON

PARK

LOT A  
AMERICAN AGRICULTURE  
CHEMICAL COMPANY TRACT  
M. B. 20 - 89

N.W. 1/4 SEC. 22, T.2S., R.13W.

PL.

WILMINGTON

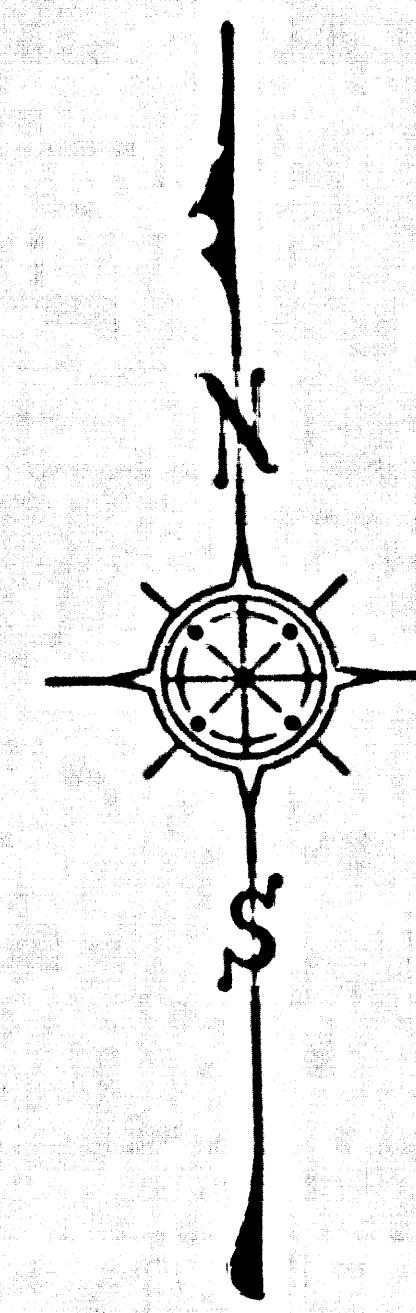
ALAMEDA

SOUTHERN

ALAMEDA

FLORENCE

AVE.



COUNTY OF LOS ANGELES  
MAP OF  
**SLAUSON AVENUE**  
FROM  
ALAMEDA STREET  
TO  
CENTRAL AVENUE  
COUNTY SURVEYORS MAP NO. B-2930  
SCALE: 1 INCH = 50 FT.

JOB NUMBER 0074.51

JOHN A. LAMBIE - COUNTY ENGINEER  
SURVEYED OCT. & NOV., 1964

SURVEYED ON REQUEST OF THE REGIONAL  
PLANNING COMMISSION UNDER SEC. 79,  
ORD. 4099 BY LETTER DATED SEPT. 23, 1964  
AND BY BOARD ORDER DATED DEC. 11, 1951

BEARINGS ARE BASED ON THE CALIFORNIA  
COORDINATE SYSTEM ZONE 7, PER SEC. 8609  
PUBLIC RESOURCES CODE. SEE C.S. 9423

F.B. 3213 - 5 - 34

FIELD WORK BY..... E. ENGLISH  
OFFICE WORK BY..... G. LUDVICKSON  
CHECKED BY..... G. L. BARR

CSB-2930  
A10FA4

IM 7

Found head and tack in hornhole. See No. 2001 F.B. 3213-28, F.B. 3213-29, F.B. 3213-30, F.B. 3213-31, F.B. 3213-32.

Found head and tack 3" below surface. See F.B. 408-52, C.S. 9-413, F.B. 3213-33.

"WATTS M-3"  
Found County Engineer's monument in hornhole. See F.B. 791-16, F.B. 2397-29, F.B. 3213-29.

Found head and tack flush with surface. See L.A. City F.B. 107-12, F.B. 408-42, L.A. City F.B. 107-12, F.B. 408-43, C.S. 9-413, F.B. 3213-27.

Found head and tack flush with surface. See L.A. City F.B. 107-12, F.B. 3213-27.

Found head and tack flush with surface. See L.A. City F.B. 107-12, F.B. 3213-27.

Found head and tack flush with surface. See L.A. City F.B. 107-12, F.B. 3213-27.

Found cut spike and washer flush with surface. F.B. 3213-29.

Found cut spike and washer flush with surface. F.B. 3213-29.

Found cut spike and washer flush with surface. F.B. 3213-29.

Found cut spike and washer flush with surface. F.B. 3213-29.

Found cut spike and washer flush with surface. F.B. 3213-29.

Found cut spike and washer flush with surface. F.B. 3213-29.

Found cut spike and washer flush with surface. F.B. 3213-29.

Found cut spike and washer flush with surface. F.B. 3213-29.

Found cut spike and washer flush with surface. F.B. 3213-29.

Found cut spike and washer flush with surface. F.B. 3213-29.

Found cut spike and washer flush with surface. F.B. 3213-29.

Found cut spike and washer flush with surface. F.B. 3213-29.

Found cut spike and washer flush with surface. F.B. 3213-29.

Found cut spike and washer flush with surface. F.B. 3213-29.

Found cut spike and washer flush with surface. F.B. 3213-29.

Found cut spike and washer flush with surface. F.B. 3213-29.

Found head and tack flush with surface. See F.B. 2347-47, No. 2001 F.B. 3213-28, L.A. City F.B. 107-12, F.B. 3213-28.

Found head and tack flush with surface. See F.B. 2347-47, No. 2001 F.B. 3213-28, L.A. City F.B. 107-12, F.B. 3213-28.

Found head and tack flush with surface. See F.B. 2347-47, No. 2001 F.B. 3213-28, L.A. City F.B. 107-12, F.B. 3213-28.

Found head and tack flush with surface. See F.B. 2347-47, No. 2001 F.B. 3213-28, L.A. City F.B. 107-12, F.B. 3213-28.

Found head and tack flush with surface. See F.B. 2347-47, No. 2001 F.B. 3213-28, L.A. City F.B. 107-12, F.B. 3213-28.

Found head and tack flush with surface. See F.B. 2347-47, No. 2001 F.B. 3213-28, L.A. City F.B. 107-12, F.B. 3213-28.

Found head and tack flush with surface. See F.B. 2347-47, No. 2001 F.B. 3213-28, L.A. City F.B. 107-12, F.B. 3213-28.

Found head and tack flush with surface. See F.B. 2347-47, No. 2001 F.B. 3213-28, L.A. City F.B. 107-12, F.B. 3213-28.

Found head and tack flush with surface. See F.B. 2347-47, No. 2001 F.B. 3213-28, L.A. City F.B. 107-12, F.B. 3213-28.

Found head and tack flush with surface. See F.B. 2347-47, No. 2001 F.B. 3213-28, L.A. City F.B. 107-12, F.B. 3213-28.

Found head and tack flush with surface. See F.B. 2347-47, No. 2001 F.B. 3213-28, L.A. City F.B. 107-12, F.B. 3213-28.

Found head and tack flush with surface. See F.B. 2347-47, No. 2001 F.B. 3213-28, L.A. City F.B. 107-12, F.B. 3213-28.

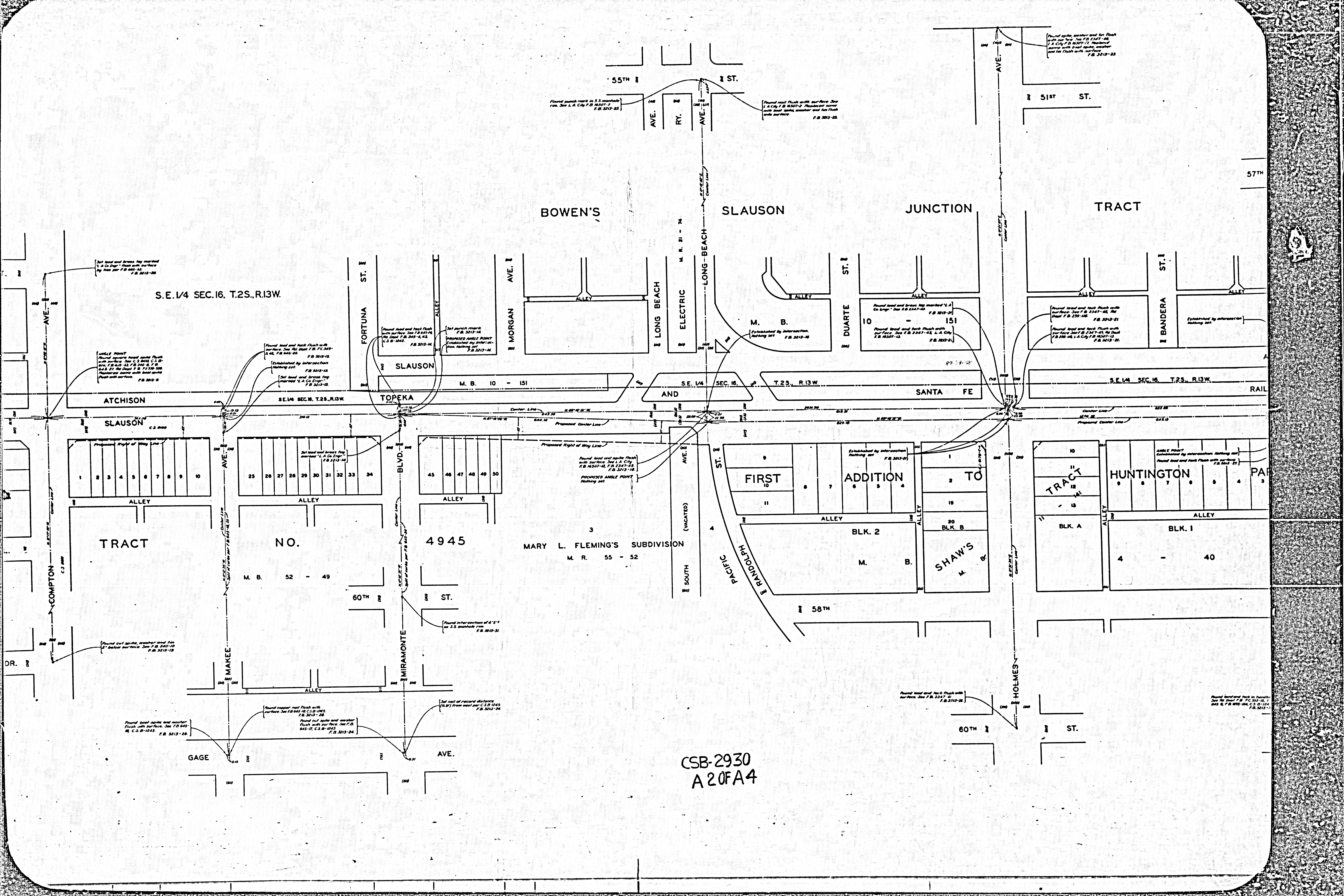
Found head and tack flush with surface. See F.B. 2347-47, No. 2001 F.B. 3213-28, L.A. City F.B. 107-12, F.B. 3213-28.

Found head and tack flush with surface. See F.B. 2347-47, No. 2001 F.B. 3213-28, L.A. City F.B. 107-12, F.B. 3213-28.

Found head and tack flush with surface. See F.B. 2347-47, No. 2001 F.B. 3213-28, L.A. City F.B. 107-12, F.B. 3213-28.

Found head and tack flush with surface. See F.B. 2347-47, No. 2001 F.B. 3213-28, L.A. City F.B. 107-12, F.B. 3213-28.

Found head and tack flush with surface. See F.B. 2347-47, No. 2001 F.B. 3213-28, L.A. City F.B. 107-12, F.B. 3213-28.



S.E. 1/4 SEC. 16, T.2S., R.13W.

SE. 1/4 SEC. 17, T.2S., R.13W.

SE. 1/4 SEC. 18, T.2S., R.13W.

MARY L. FLEMING'S SUBDIVISION  
M. R. 55 - 52

CSB-2930  
A 20FA4

Set lead and brass key marked  
"A Co Eng" flush with surface  
by nos per F.B. 645-52  
F.B. 3213-26

ANGLE POINT  
Found lead and brass key marked  
"A Co Eng" flush with surface  
See C.S. 802 C.S. B-  
nos. F.B. 645-52, F.B. 240-10,  
F.B. 645-51, No. 240-11, F.B. 713-130  
Reproduce same with lead spike  
flush with surface  
F.B. 3213-26

Found lead and brass key marked  
"A Co Eng" flush with surface  
See F.B. 645-52  
F.B. 3213-26

Established by intersection  
Nothing set  
F.B. 3213-26

Set lead and brass key  
marked "A Co Eng"  
flush with surface  
F.B. 3213-26

Found lead and brass key marked  
"A Co Eng" flush with surface  
See F.B. 645-52  
F.B. 3213-26

Set survey mark  
F.B. 3213-26

PROPOSED ANGLE POINT  
Established by intersection  
Nothing set  
F.B. 3213-26

Found patch mark in S.S. manhole  
rim. See L.A. City F.B. 16307-7  
F.B. 3213-25

Found nail flush with surface. See  
L.A. City F.B. 16307-2. Proposed same  
with lead spike, washer and key flush  
with surface  
F.B. 3213-25

Found spike, washer and key flush  
with surface. See F.B. 1347-46,  
L.A. City F.B. 16307-17. Reproduce  
same with lead spike, washer  
and key flush with surface.  
F.B. 3213-25

Found lead and brass key marked "A  
Co Eng" See F.B. 2347-45, No.  
F.B. 3213-21

Found lead and brass key marked "A  
Co Eng" See F.B. 2347-45, L.A. City  
F.B. 16307-13  
F.B. 3213-21

Found lead and brass key marked  
"A Co Eng" See F.B. 2347-45, No.  
F.B. 235-146, L.A. City F.B. 16307-13  
F.B. 3213-21

ANGLE POINT  
Established by intersection. Nothing set  
F.B. 3213-21

Found lead and brass key marked  
"A Co Eng" flush with surface. See L.A. City  
F.B. 16307-10, F.B. 1347-39,  
F.B. 3213-16  
PROPOSED ANGLE POINT  
Nothing set

Established by intersection  
Nothing set  
F.B. 3213-21

ANGLE POINT  
Established by intersection. Nothing set  
F.B. 3213-21

Found cut spike, washer and key  
2" below surface. See F.B. 240-10  
F.B. 3213-26

Found lead spike and washer  
flush with surface. See F.B. 645-  
10, C.S. B-1245  
F.B. 3213-26

Found copper nail flush with  
surface. See F.B. 645-10, C.S. B-1245  
F.B. 3213-26

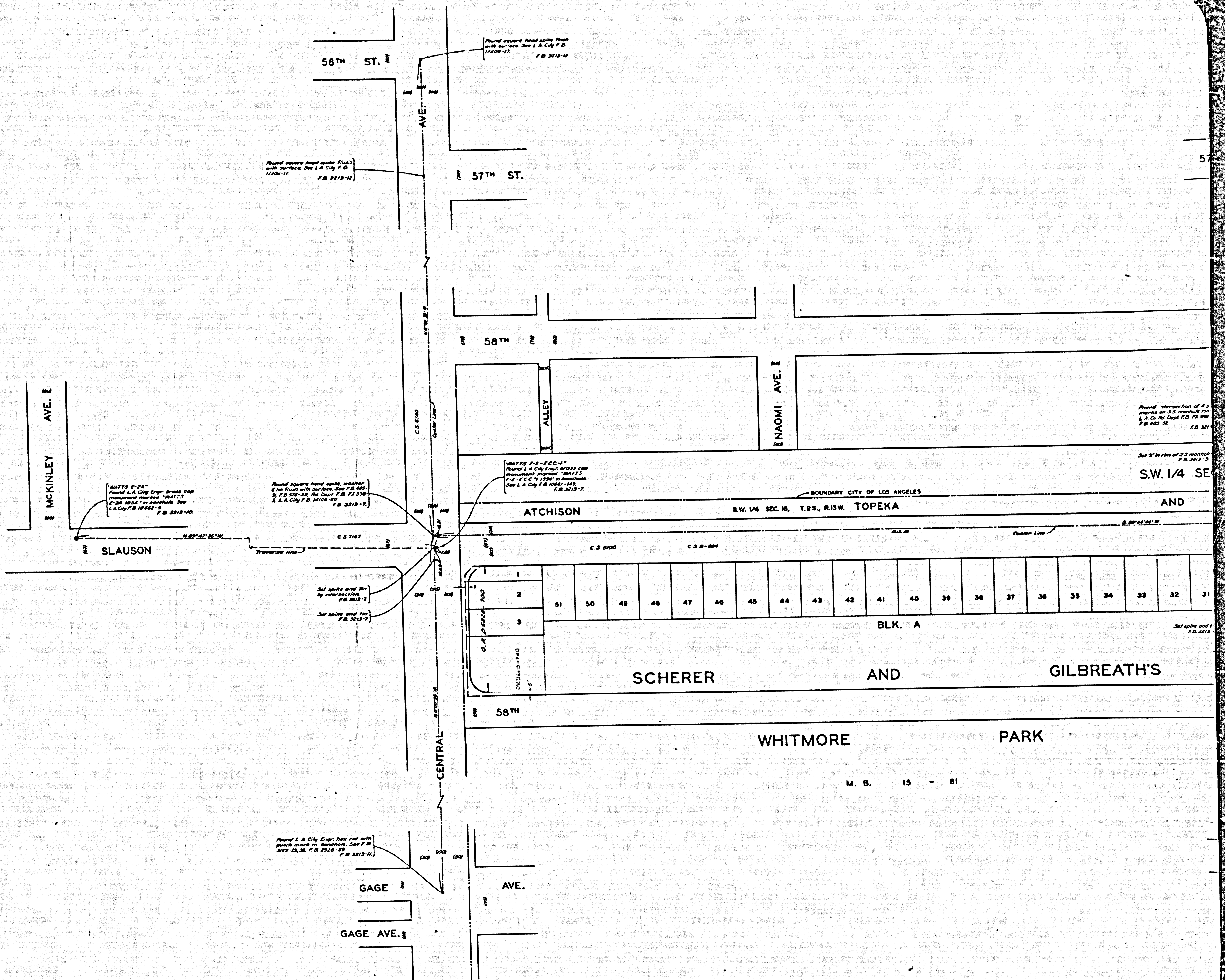
Found cut spike and washer  
flush with surface. See F.B. 645-  
10, C.S. B-1245  
F.B. 3213-26

Set rest of record distance  
(132) from west per C.S. B-1245  
F.B. 3213-26

Found lead and brass key flush with  
surface. See F.B. 2347-45  
F.B. 3213-21

Found lead and brass key by hand  
See the last F.B. FC 552-10,  
645 B, F.B. 623-144, C.S. B-124  
F.B. 3213-21





CSB-2930  
A40FA4