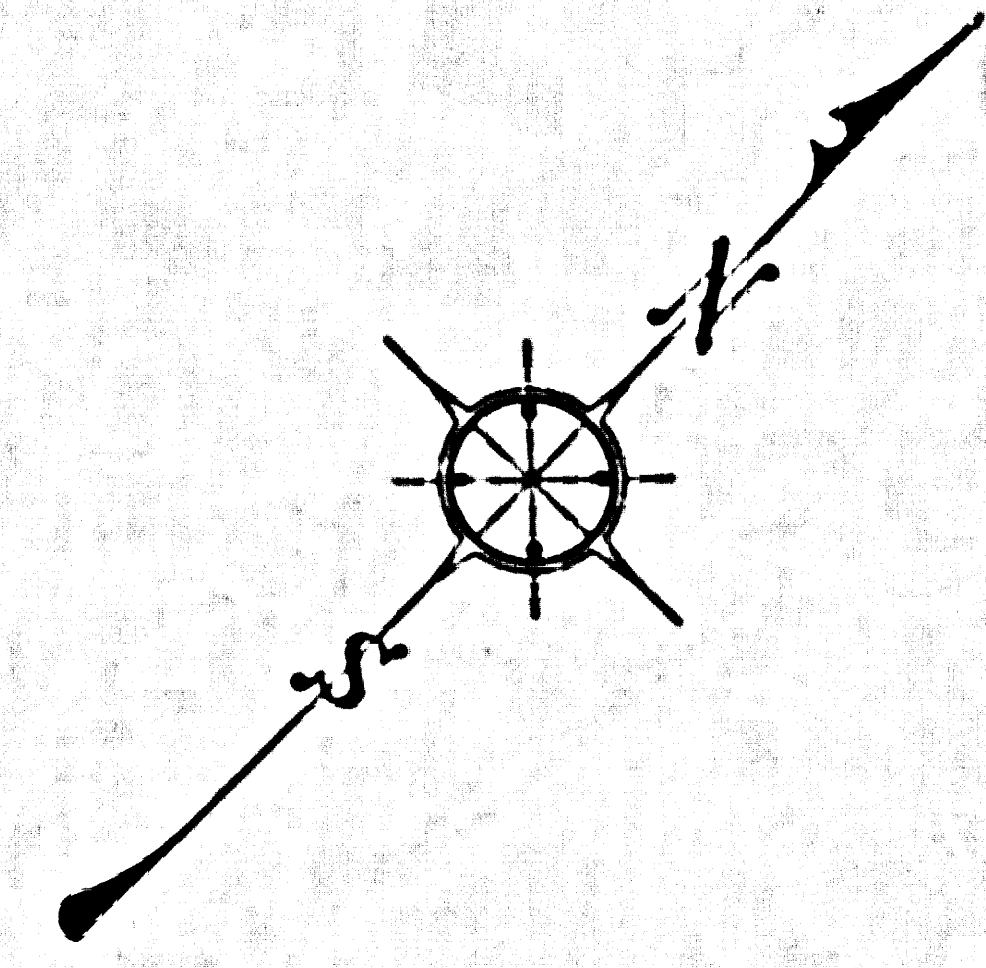
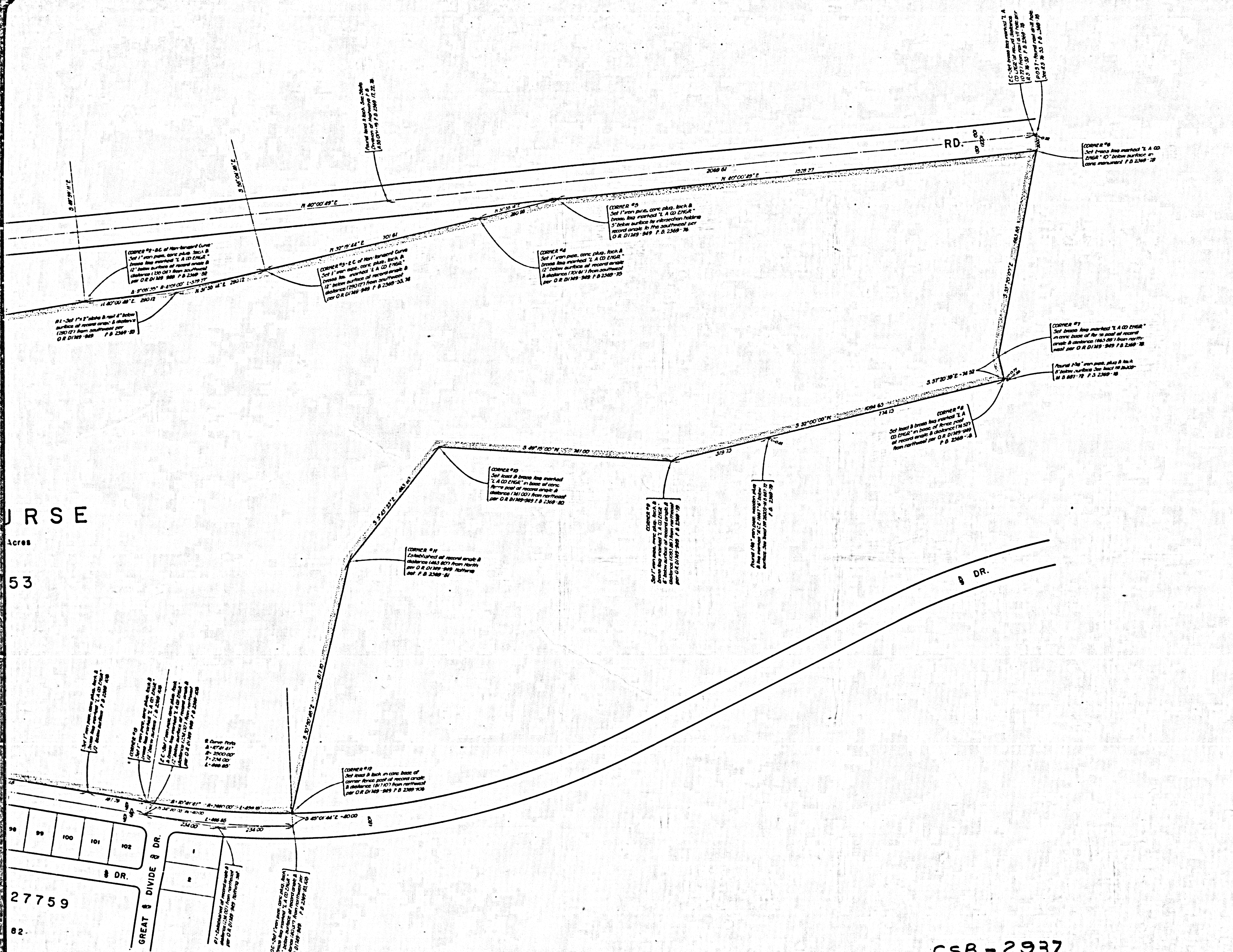


COURSE
Acres
53



COUNTY OF LOS ANGELES
 MAP OF
DIAMOND BAR GOLF COURSE
 BEING PORTIONS OF SECTIONS
 3, 9, 10 & 16, T. 2 S., R. 9 W., S. B. M.
 COUNTY SURVEYORS MAP NO. B-2937
 SCALE - 1 INCH = 100 FT.

JOB NUMBER 0055.29
 JOHN A. LAMBIE - COUNTY ENGINEER
 SURVEYED SEPT.-OCT. 1958, JUNE-JULY 1963,
 NOV. - DEC. 1964.
 SURVEYED ON REQUEST OF THE DIRECTOR
 OF PARKS & RECREATION UNDER SEC. 79,
 ORD. 4099, BY LETTER DATED AUG. 1, 1958.
 BEARINGS ARE BASED ON THE CALIFORNIA
 COORDINATE SYSTEM ZONE 7 PER SEC. 8609
 PUBLIC RESOURCES CODE. SEE C. S. 9423.
 F. B. 2369-10-106

IM 39

CSB-2937
A1 OF A2

27759
62

GREAT DIVIDE DR.

RD.

DR.

CORNER #5

CORNER #6

CORNER #7

CORNER #8

CORNER #9

CORNER #10

CORNER #1

CORNER #2

CORNER #3

CORNER #4

CORNER #11

CORNER #12

CORNER #13

CORNER #14

CORNER #15

CORNER #16

CORNER #17

CORNER #18

CORNER #19

CORNER #20

CORNER #21

CORNER #22

CORNER #23

CORNER #24

CORNER #25

CORNER #26

CORNER #27

CORNER #28

CORNER #29

CORNER #30

CORNER #31

CORNER #32

CORNER #33

CORNER #34

CORNER #35

CORNER #36

CORNER #37

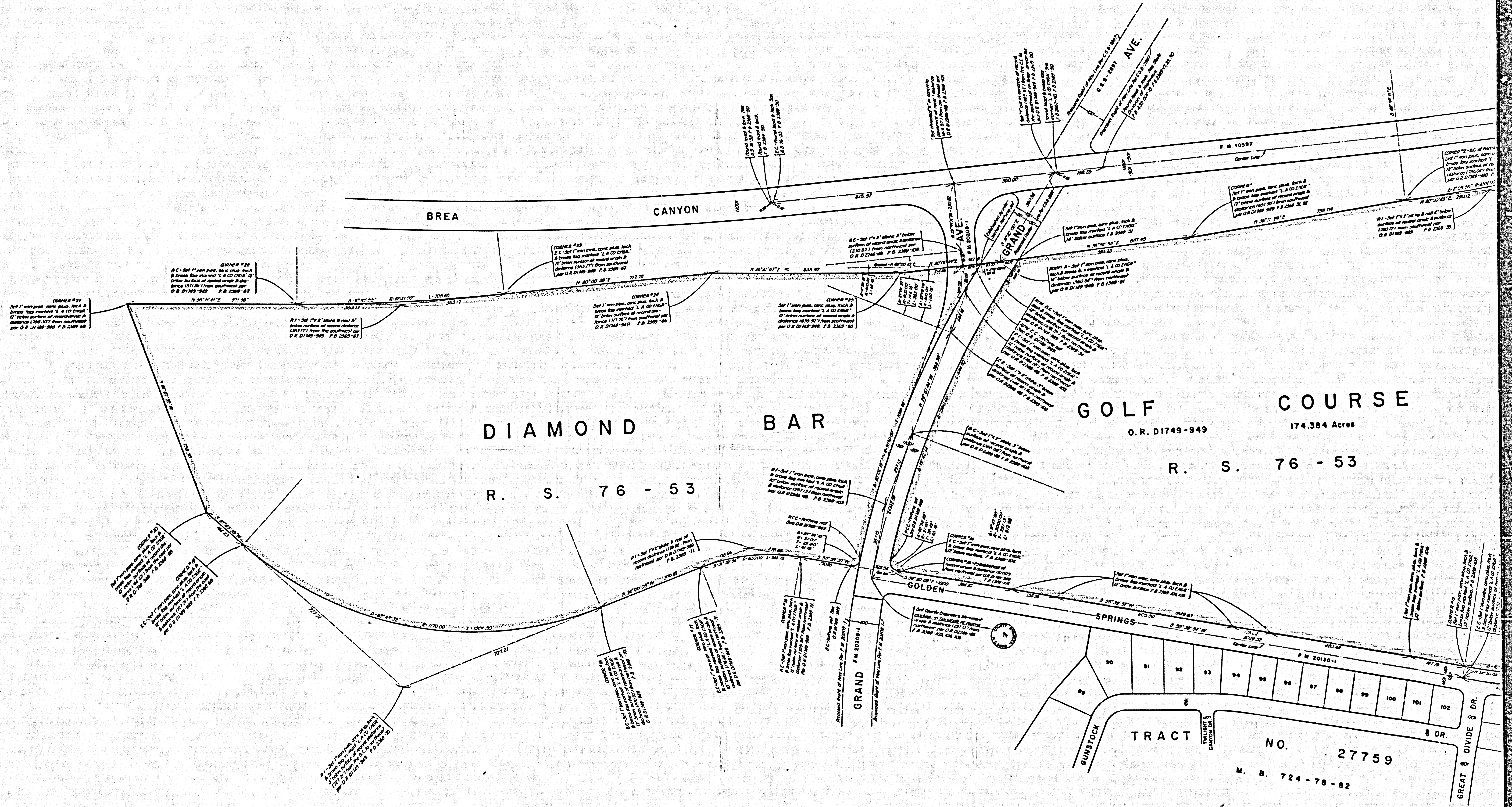
CORNER #38

CORNER #39

CORNER #40

CORNER #41

CORNER #42



DIAMOND BAR
 R. S. 76 - 53

GOLF COURSE
 O. R. D1749-949
 174.384 Acres
 R. S. 76 - 53

TRACT NO. 27759
 M. B. 724 - 78 - 82

LOTS 90, 91, 92, 93, 94, 95, 96, 97, 98, 99, 100, 101, 102

CSB-2937
 A1 OF A2