

COUNTY OF LOS ANGELES  
 MAP OF  
**PROBATION DEPARTMENT FACILITIES**  
**SANTA MONICA MOUNTAINS**  
 BEING A PORTION OF SECTIONS  
 11, 12 & 13, T.1 S., R.19 W., S.B.M.  
 COUNTY SURVEYORS MAP NO. B-2939  
 SCALE :- 1 INCH = 200 FT.

CSB-2939  
 A1 OF A3

FACILITIES WITHIN THIS AREA ARE:  
 CAMP MILLER  
 CAMP KILPATRICK  
 DETENTION CAMP NO. 16

IM 95  
 IM 96  
 IM 144-017

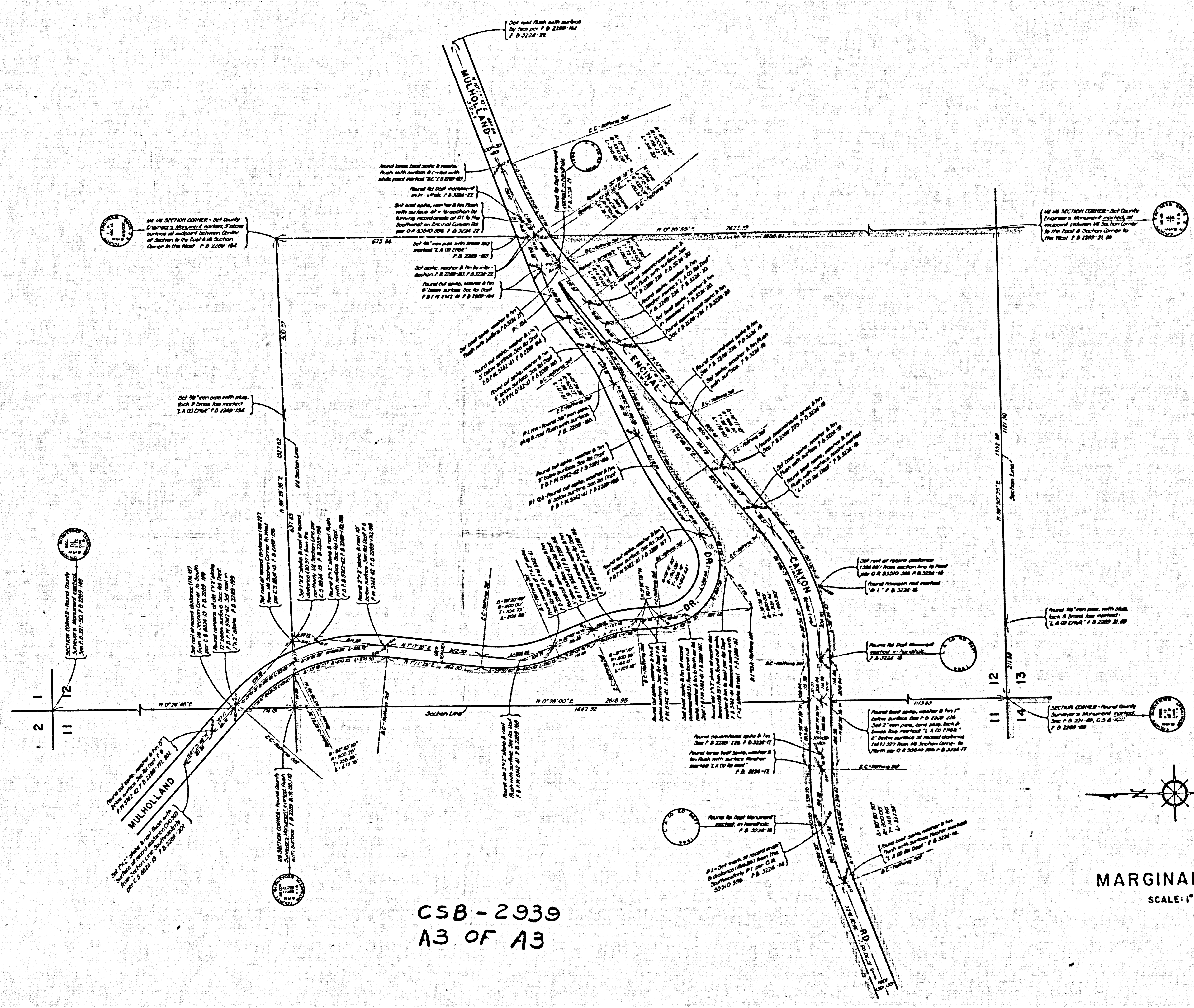
JOB NUMBER 0060.10  
 JOHN A. LAMBIE - COUNTY ENGINEER  
 SURVEYED JULY - AUGUST 1937,  
 NOV. 1938 - JULY 1939, NOV. - DEC. 1964  
 SURVEYED ON REQUEST OF THE DIRECTOR  
 OF REAL ESTATE MANAGEMENT UNDER SEC. 79,  
 ORD. 4099, BY LETTER DATED JULY 15, 1937.  
 BEARINGS ARE BASED ON THE CALIFORNIA  
 COORDINATE SYSTEM ZONE 7 PER SEC. 8009  
 PUBLIC RESOURCES CODE. SEE C. S. 9423.  
 F. B. 2289 - 5 - 21, 69 - 88, 141 - 205  
 F. B. 3224 - 7 - 24  
 FIELD WORK BY..... W. S. COWHERD,  
 R. C. DALE, L. V. SMITH, J. M. HARRIET  
 OFFICE WORK BY..... M. HAMASU  
 CHECKED BY..... S. H. MILLER  
 H. E. AUSTIN

FOR TOPOGRAPHY SEE SURVEY DIVISION  
 FILE MAP NO'S 85-76, P.T. 194-1B2, P.T. 319









CSB-2939  
A3 OF A3

MARGINAL MAP  
SCALE: 1"=100'