

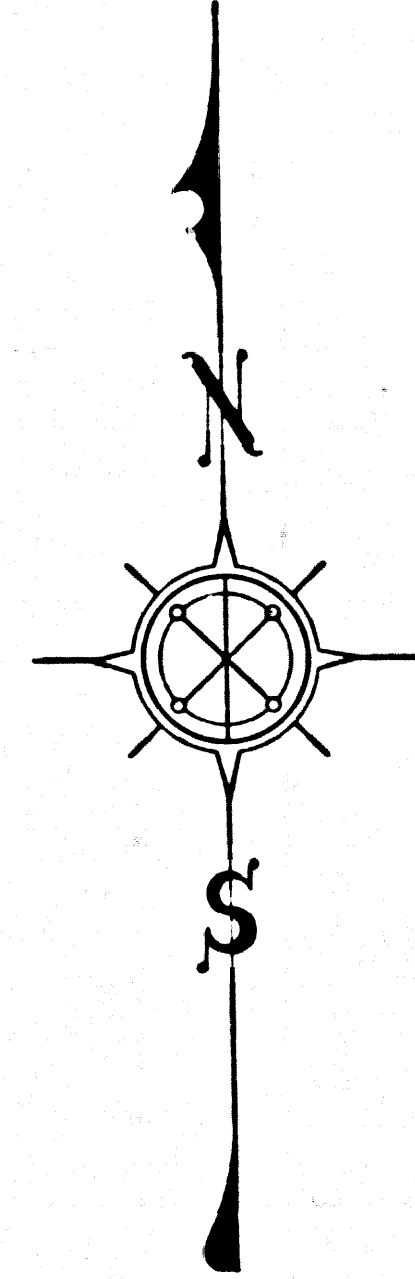
CSB-2941
A1 OF A2

COUNTY OF LOS ANGELES
MAP OF
BEVERLY HILLS MUNICIPAL COURTS BUILDING SITE

BEING LOTS 1 TO 7, INCL., BLOCK 18, TRACT NO. 5647, M. B. 60-88
COUNTY SURVEYOR'S MAP NO. B-2941
SCALE:- 1 INCH = 40 FT.

JOB NUMBER 0021.99
JOHN A. LAMBIE - COUNTY ENGINEER
SURVEYED APRIL, 1965
SURVEYED ON REQUEST OF THE CHIEF ADMINISTRATIVE OFFICER UNDER SEC. 79 ORD. 4099 BY LETTER DATED FEB. 25, 1965
BEARINGS ARE BASED ON THE BEARING OF ALPINE DR. PER TRACT 13769 M. B. 354-3 & 4
F. B. 3243-5-26
FIELD WORK BY.....R. B. HOBSON
OFFICE WORK BY.....T. M. KCHIEN
CHECKED BY.....J. EDWARDS
BY.....W. J. BRENNER

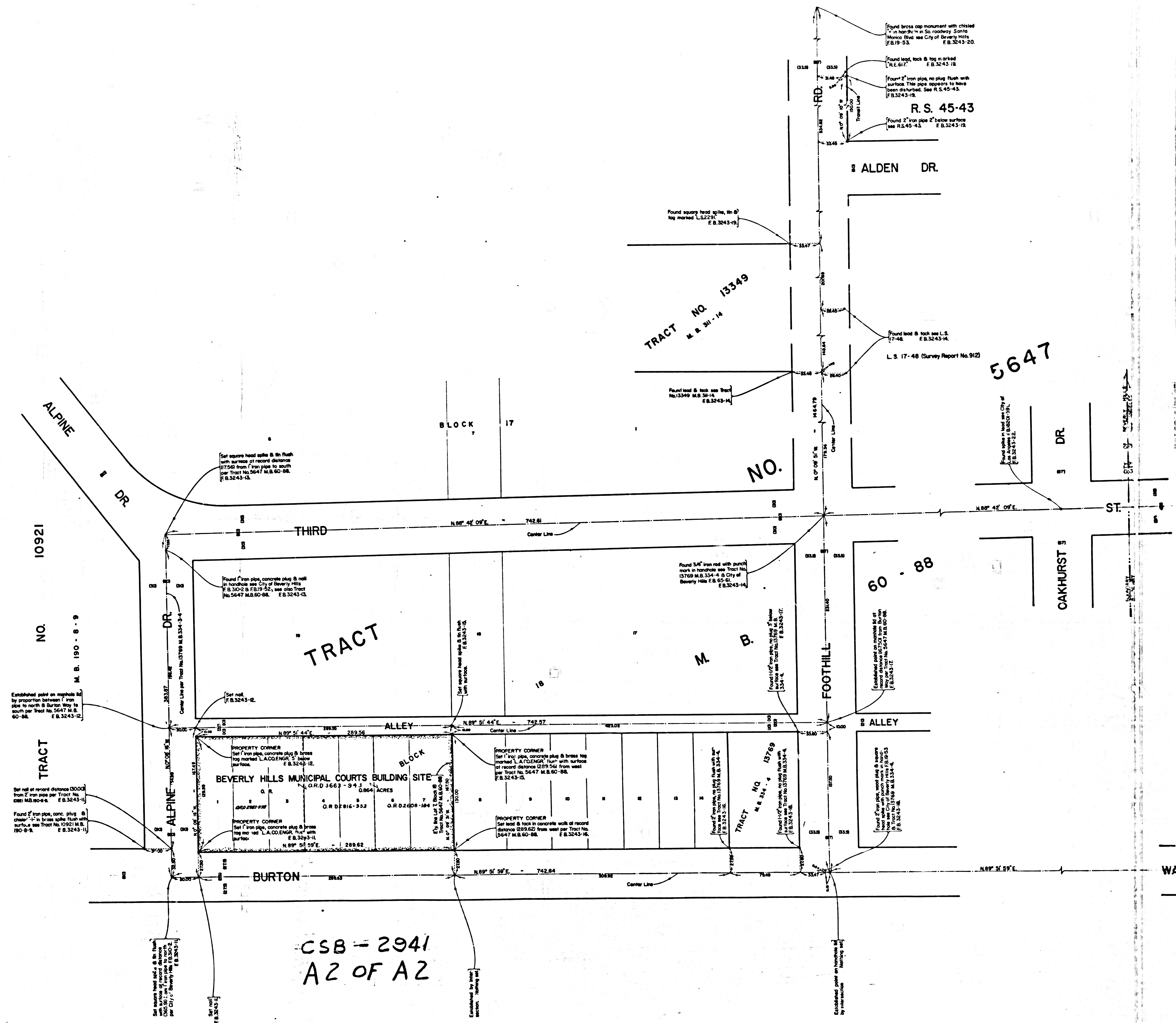
NOTE: FOR TOPOGRAPHY PRIOR TO CONSTRUCTION SEE SURVEY DIVISION FILE MAP NO. P.T. 343



IM 22

CONTROL SURVEYORS

COPY 11



CSB-2941
A2 OF A2

TRACT NO. 13549
M.B. 30-14

TRACT NO. 10921
M.B. 190-8-9

TRACT NO. 19089
M.B. 30-14

TRACT NO. 19089
M.B. 30-14

R.S. 45-43

5647

60-88

Set square hole with 8 in. flush with surface of record distance 47.500 from 2' iron pipe to south per Tract No. 5647 M.B. 60-88. E.B. 3243-12.

Found 7' iron pipe, concrete plug & nail in horizon see City of Beverly Hills E.B. 3243-12. See also Tract No. 5647 M.B. 60-88. E.B. 3243-12.

Set iron pipe, concrete plug & brass top marked L.A. CO. ENGR. 5' above surface. E.B. 3243-12.

Set iron pipe, concrete plug & brass top marked L.A. CO. ENGR. 5' above surface. E.B. 3243-12.

Set iron pipe, concrete plug & brass top marked L.A. CO. ENGR. 5' above surface. E.B. 3243-12.

Found 3 1/2" iron rod with punch mark in horizon see Tract No. 13789 M.B. 334-4 & City of Beverly Hills E.B. 3243-14.

Found 1 1/2" iron pipe, concrete plug & nail in horizon see Tract No. 13789 M.B. 334-4 & City of Beverly Hills E.B. 3243-14.

Found 1 1/2" iron pipe, concrete plug & nail in horizon see Tract No. 13789 M.B. 334-4 & City of Beverly Hills E.B. 3243-14.

Found 1 1/2" iron pipe, concrete plug & nail in horizon see Tract No. 13789 M.B. 334-4 & City of Beverly Hills E.B. 3243-14.

Found square hole with 8 in. flush with surface of record distance 47.500 from 2' iron pipe to south per Tract No. 5647 M.B. 60-88. E.B. 3243-12.

Found 7' iron pipe, concrete plug & nail in horizon see City of Beverly Hills E.B. 3243-12. See also Tract No. 5647 M.B. 60-88. E.B. 3243-12.

Found 3 1/2" iron rod with punch mark in horizon see Tract No. 13789 M.B. 334-4 & City of Beverly Hills E.B. 3243-14.

Found 1 1/2" iron pipe, concrete plug & nail in horizon see Tract No. 13789 M.B. 334-4 & City of Beverly Hills E.B. 3243-14.

Found 1 1/2" iron pipe, concrete plug & nail in horizon see Tract No. 13789 M.B. 334-4 & City of Beverly Hills E.B. 3243-14.

Found 1 1/2" iron pipe, concrete plug & nail in horizon see Tract No. 13789 M.B. 334-4 & City of Beverly Hills E.B. 3243-14.

Found brass cap monument with chased "N" mark in S. roadway. See also County Map and City of Beverly Hills E.B. 3243-20.

Found lead, rock & log marked "N.E. 617". E.B. 3243-18.

Found 2" iron pipe, no plug, flush with surface. This pipe appears to have been set in place. See R.S. 45-43. E.B. 3243-18.

Found 2" iron pipe 2' below surface. See R.S. 45-43. E.B. 3243-18.

Found lead & log see L.S. L.S. 17-48 (Survey Report No. 912) E.B. 3243-14.

Found hole in horizon see City of Beverly Hills E.B. 3243-12.

Established point on northeast corner of lot 18 of Block 18, Beverly Hills E.B. 3243-12.

Found 2" iron pipe, concrete plug & brass top marked L.A. CO. ENGR. 5' above surface. E.B. 3243-12.

Found 2" iron pipe, concrete plug & brass top marked L.A. CO. ENGR. 5' above surface. E.B. 3243-12.

Found 2" iron pipe, concrete plug & brass top marked L.A. CO. ENGR. 5' above surface. E.B. 3243-12.

Established point on northeast corner of lot 18 of Block 18, Beverly Hills E.B. 3243-12.

Found 2" iron pipe, concrete plug & brass top marked L.A. CO. ENGR. 5' above surface. E.B. 3243-12.

Found 2" iron pipe, concrete plug & brass top marked L.A. CO. ENGR. 5' above surface. E.B. 3243-12.

Found 2" iron pipe, concrete plug & brass top marked L.A. CO. ENGR. 5' above surface. E.B. 3243-12.

Found 2" iron pipe, concrete plug & brass top marked L.A. CO. ENGR. 5' above surface. E.B. 3243-12.

Found 2" iron pipe, concrete plug & brass top marked L.A. CO. ENGR. 5' above surface. E.B. 3243-12.