

COUNTY OF LOS ANGELES
 MAP OF
TENTH STREET EAST
 FROM
 AVENUE M
 TO
 AVENUE E
 COUNTY SURVEYORS MAP NO. B-2944
 SHEET NO. 1 OF 4 SHEETS
 SCALE: 1 INCH = 100 FT.

JOB NUMBER 0075.04
 JOHN A. LAMBIE - COUNTY ENGINEER
 SURVEYED OCT. 1961 TO JAN. 1962 & APRIL 1965
 SURVEYED ON REQUEST OF THE REGIONAL
 PLANNING COMMISSION UNDER SEC. 79,
 ORD. 4099, BY LETTER DATED MARCH 19, 1964
 AND BY BOARD ORDER DATED DEC. 11, 1951
 BEARINGS ARE BASED ON THE ELY LINE OF
 SEC. 35 T. 7 N., R. 12 W. AS SHOWN ON C.S. B-831-2
 F. B. 2223 F. B. 2940 F. B. 3235
 FIELD WORK BY..... J. S. COATES
 OFFICE WORK BY..... J. C. PIERCE
 CHECKED BY..... R. S. DOWNS
 BY..... W. J. BRENNER

CSB-2944-1
 A1 OF A3

IM 77

T. 7 N. . R. 12 W.

S. B. M.

PORTION

71

SECTION

50

36

S.

R.

25

AVENUE (PVT. ST.)

36

10TH STREET

(PRIVATE STREET)

STREET

EAST

EAST

CSB-AM-2,3

CSB-2001-1

CSB-AM-2,3

CSB-2001-1

T. 7 N. . R. 12 W.

S. B. M.

PORTION

S.

SECTION

35

R.

26

AVENUE (PVT. ST.)

35

PAR. 124

PAR. 125

PAR. 126

PAR. 127

PAR. 128

PAR. 129

PAR. 130

PAR. 131

PAR. 132

61

AVENUE (PVT. ST.)

28

29

AVENUE (PVT. ST.)

35

R.

15TH ST. EAST

(PVT. ST.)

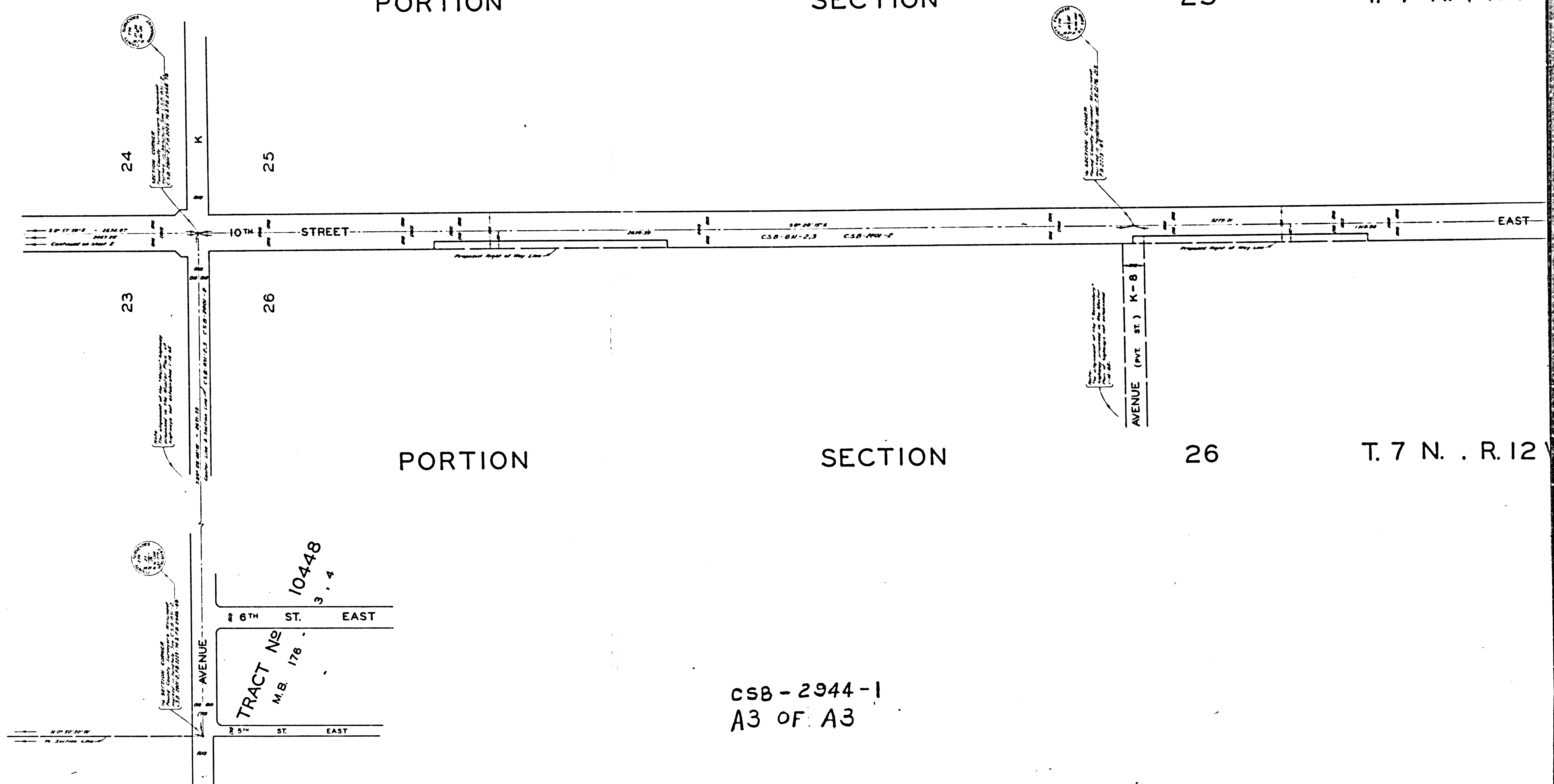
CSB-2944-1
A2 OF A3

PORTION

SECTION

25

T. 7 N. . R. 12



PORTION

SECTION

26

T. 7 N. . R. 12

CSB-2944-1
A3 OF A3