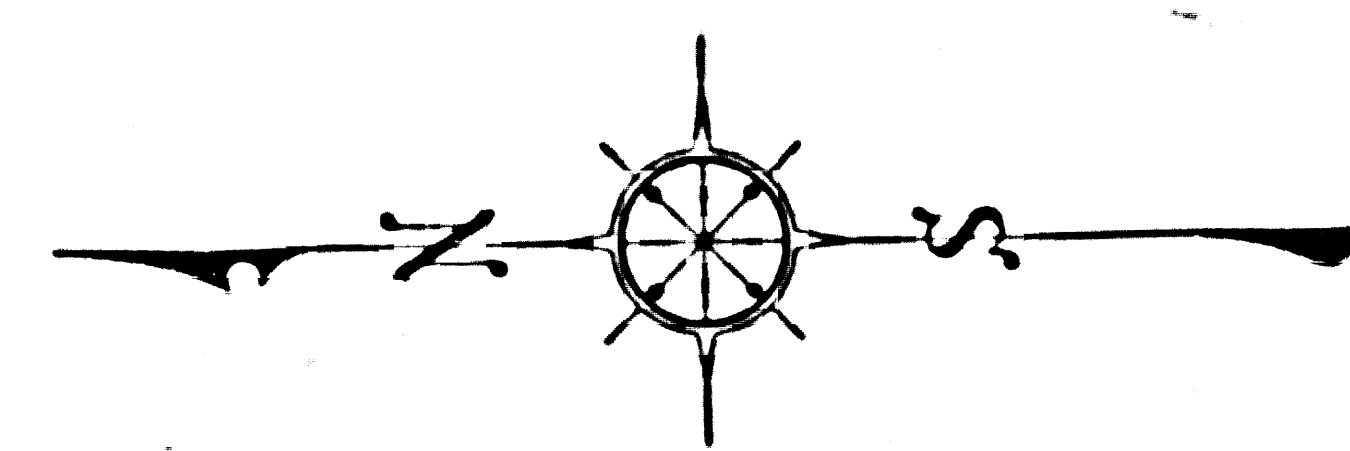
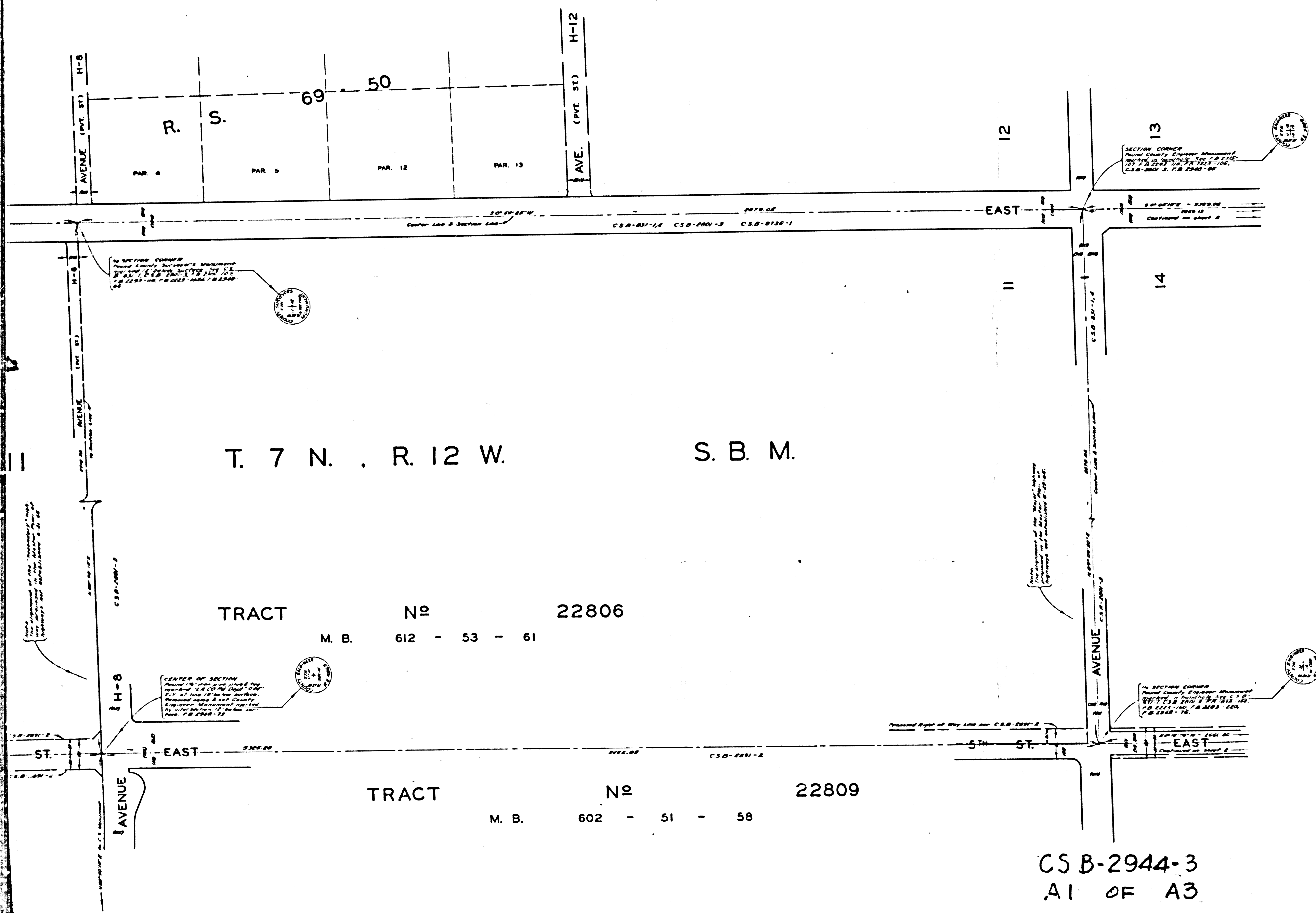


2

T. 7 N. , R 12 W.

S. B. M.



COUNTY OF LOS ANGELES
 MAP OF
TENTH STREET EAST
 FROM
 AVENUE M
 TO
 AVENUE E

COUNTY SURVEYORS MAP NO. B-2944
 SHEET NO. 3 OF 4 SHEETS
 SCALE: 1 INCH = 100 FT.

JOB NUMBER 0075 94

JOHN A. LAMBIE - COUNTY ENGINEER
 SURVEYED OCT. 1961 TO JAN. 1962 & APRIL 1965
 SURVEYED ON REQUEST OF THE REGIONAL
 PLANNING COMMISSION UNDER SEC. 79,
 ORD. 4099 BY LETTER DATED MARCH 19, 1964
 AND BY BOARD ORDER DATED DEC. 11, 1951
 BEARINGS ARE BASED ON THE ELY LINE OF
 SEC. 35 T. 7 N., R. 12 W. AS SHOWN ON C.S.B.-631-2

F. B. 2223 F. B. 2944 F. B. 3235
 FIELD WORK BY..... J. S. COATES
 OFFICE WORK BY..... J. C. PIERCE
 CHECKED BY..... R. S. DOWNS
 BY..... W. J. BILMNER

CS B-2944-3
 A1 OF A3

PORTION

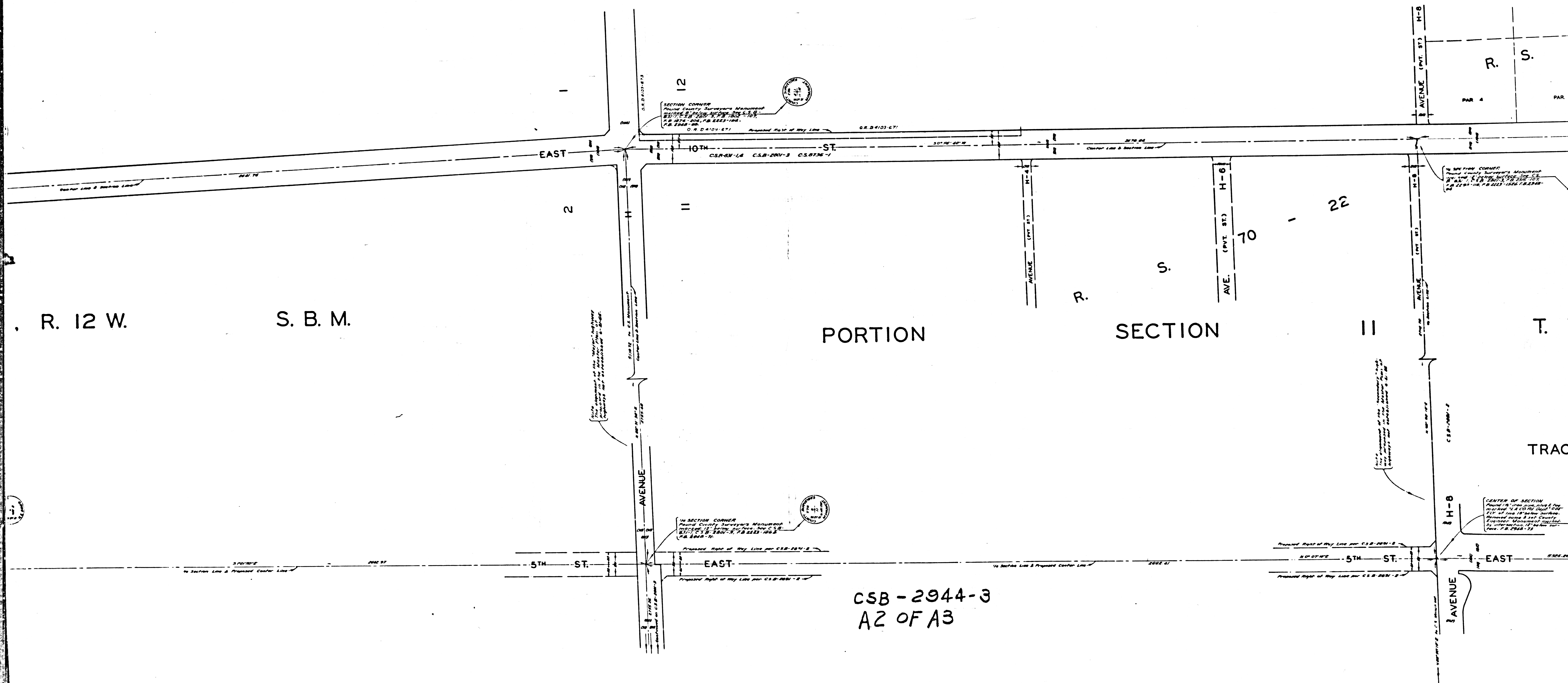
SECTION

12

T.

R. 12 W.

S. B. M.



R. 12 W.

S. B. M.

PORTION

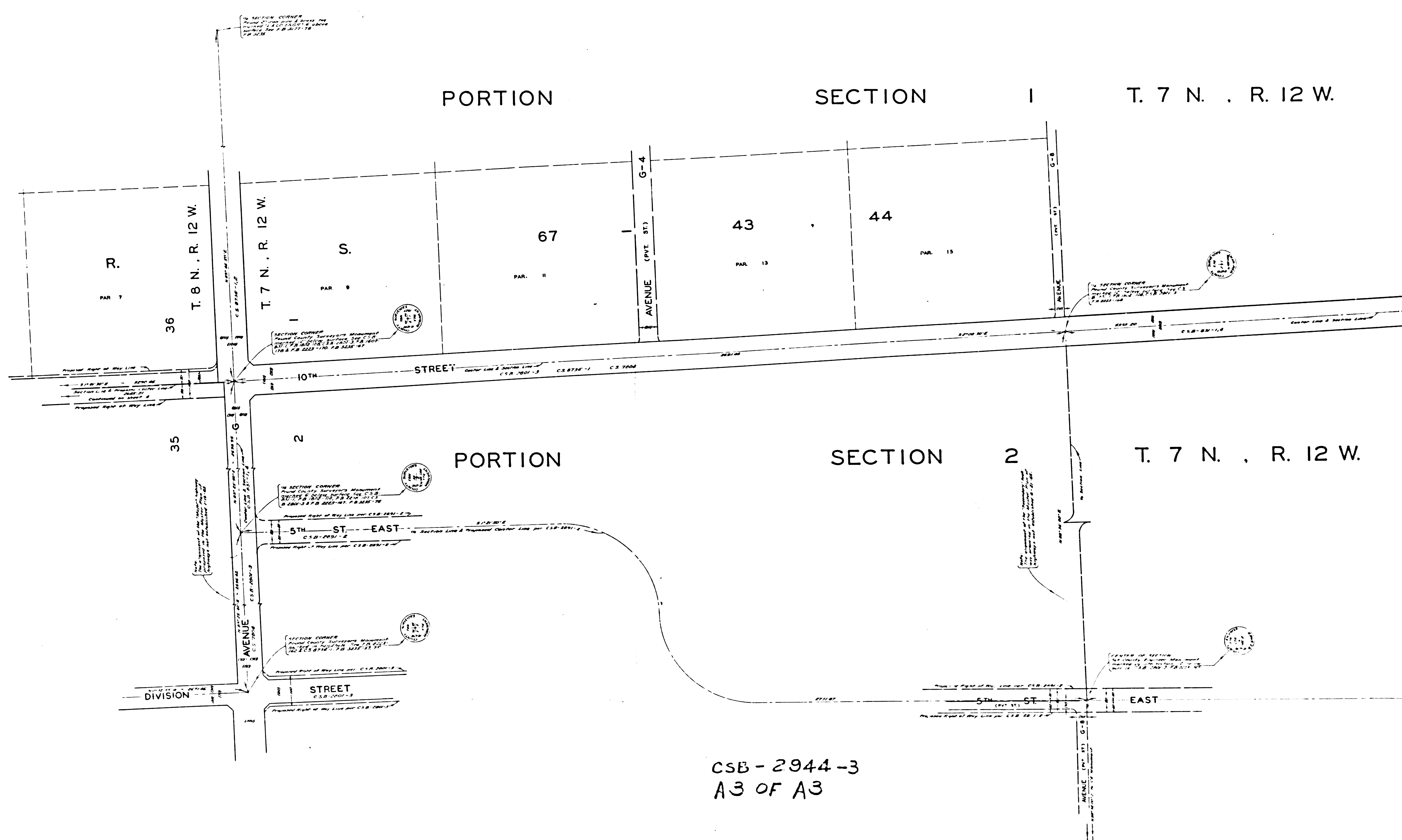
SECTION

11

T.

CSB-2944-3
A2 OF A3

TRAC



PORTION

SECTION 1

T. 7 N. , R. 12 W.

R.

T. 8 N. , R. 12 W.

T. 7 N. , R. 12 W.

S.

67

43

44

PAR. 7

PAR. 9

PAR. 11

PAR. 13

PAR. 15

36

35

2

PORTION

SECTION 2

T. 7 N. , R. 12 W.

5TH ST. EAST

STREET

5TH ST. EAST

EAST

DIVISION

CSB-2944-3
A3 OF A3