

COUNTY OF LOS ANGELES  
 MAP OF  
**SECTION 35, T. 4 N., R. 15 W., S. B. M.**  
 AND  
**LOS ANGELES COUNTY  
 FIRE STATION SITE NO 123**  
 SAND CANYON  
 BEING A PORTION OF THE  
 S.E. 1/4 SEC. 35, T. 4 N., R. 15 W., S.B.M.  
 COUNTY SURVEYORS MAP NO. B-2951  
 SCALE - 1 INCH = 200 FT.  
 1 INCH = 40 FT.

JOB NUMBER 0302.01  
 0039.04

JOHN A. LAMBIE - COUNTY ENGINEER  
 SURVEYED APRIL - JUNE 1985

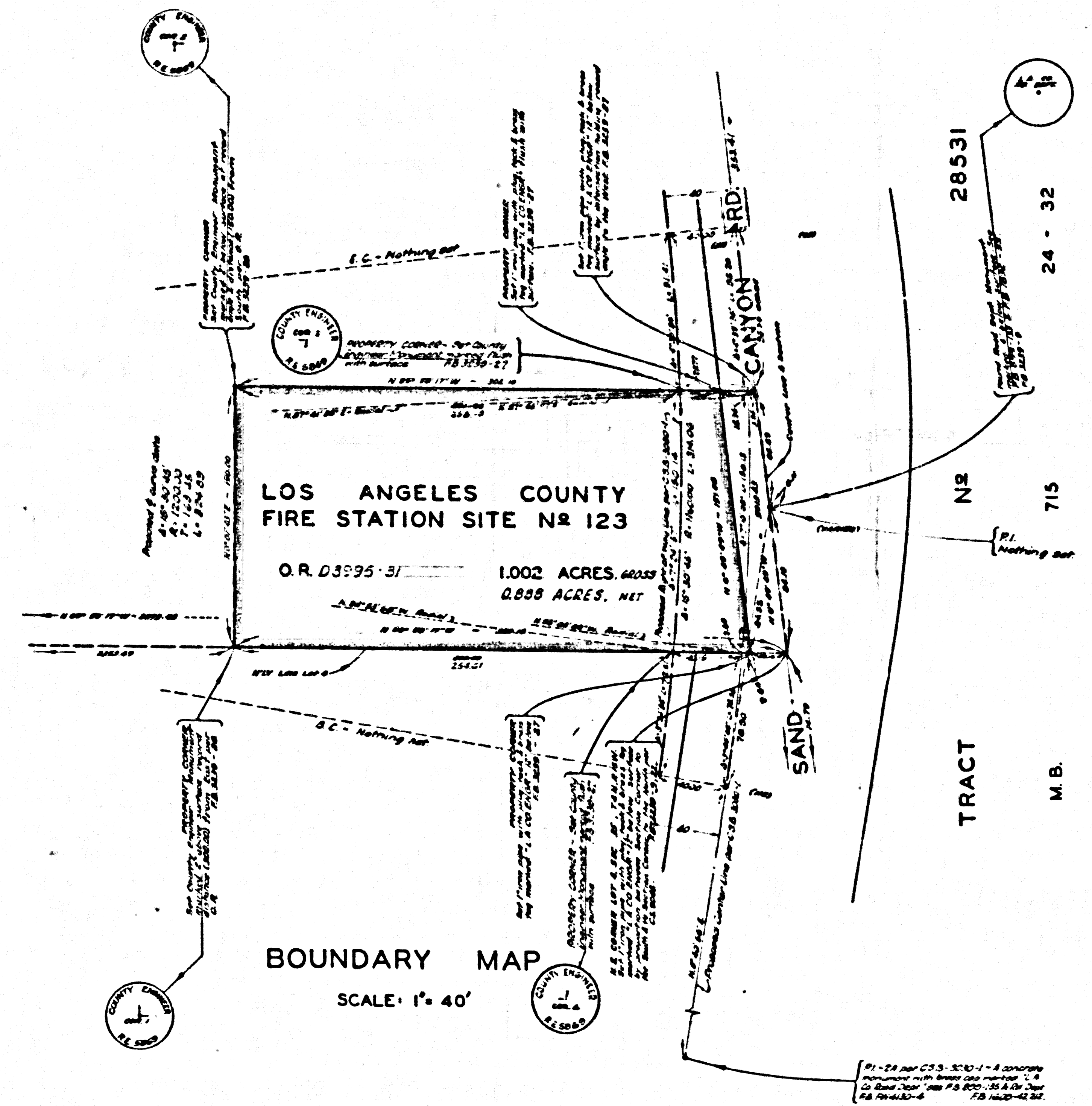
SURVEYED ON REQUEST OF THE CHIEF ENGINEER  
 COUNTY FIRE PROTECTION DISTRICTS  
 UNDER SEC. 79 ORD. 4099 BY LETTER  
 DATED FEB 15 1985

BEARINGS ARE BASED ON THE CALIFORNIA  
 COORDINATE SYSTEM ZONE 7 PER SEC. 8809  
 PUBLIC RESOURCES CODE SEE C.S. 9423

F.B. 3230-5-47

FIELD WORK BY ..... J. TERRANOVA  
 OFFICE WORK BY ..... J. E. EDWARDS  
 ..... R. S. DOWNS  
 CHECKED BY ..... W. J. BRENNER

CSB-2951  
 A1 OF A2



CSB-2951  
A2 OF A2

