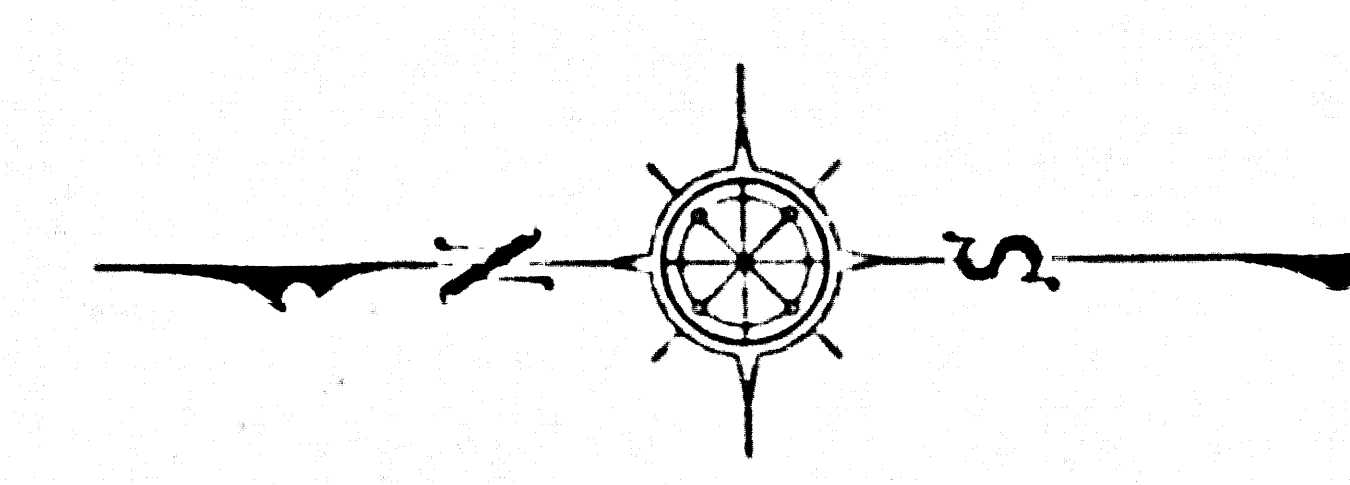
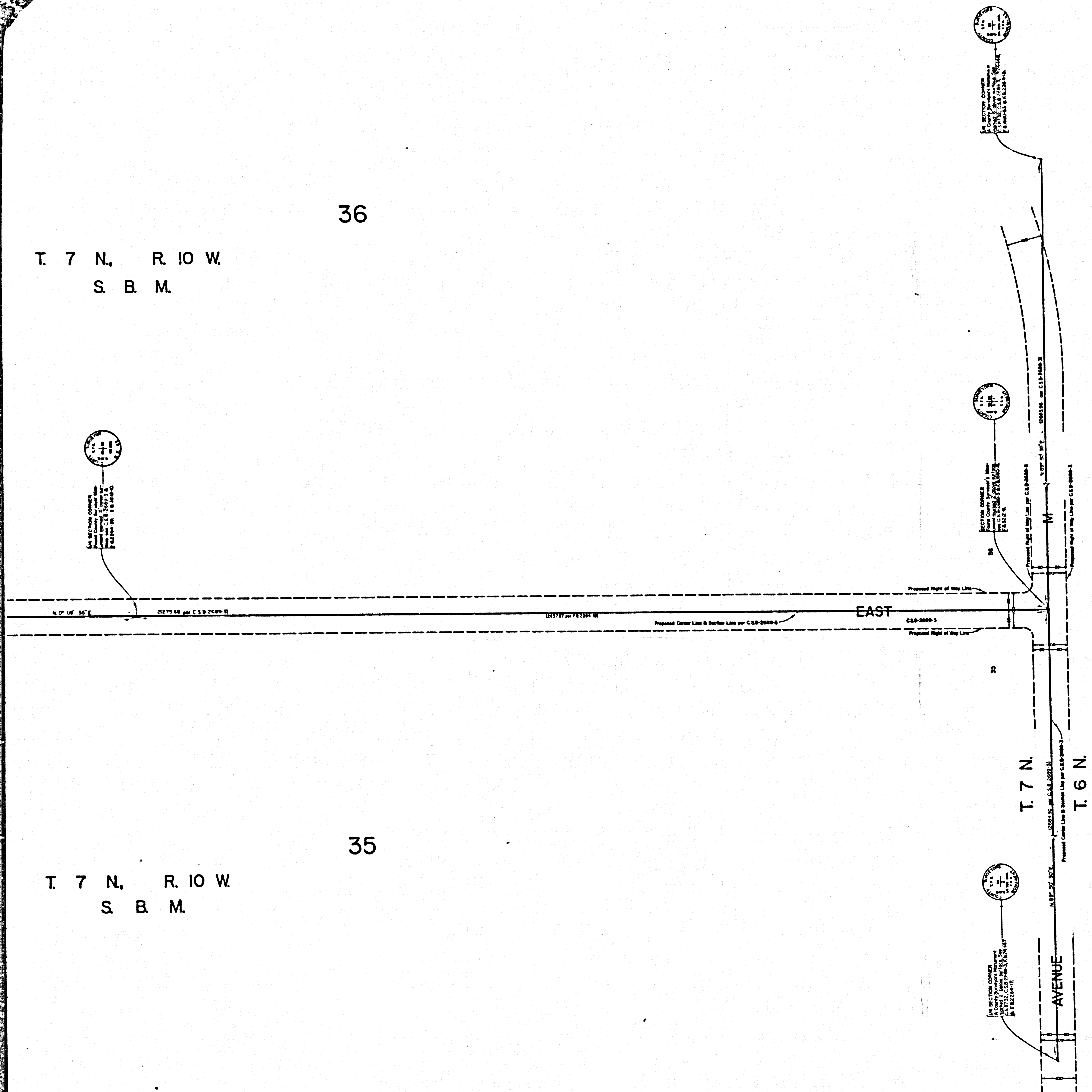


36

T. 7 N., R. 10 W.  
S. B. M.

35

T. 7 N., R. 10 W.  
S. B. M.



COUNTY OF LOS ANGELES  
 MAP OF  
**130<sup>TH</sup> STREET EAST**  
 FROM  
 AVENUE M  
 TO  
 AVENUE E

COUNTY SURVEYOR'S MAP NO. B-2952  
 SHEET NO. 1 OF 4 SHEETS  
 SCALE - 1 INCH = 100 FT.

JOB NUMBER 0096.40

JOHN A. LAMBIE - COUNTY ENGINEER  
 SURVEYED FEB. - APRIL, 1965

SURVEYED ON REQUEST OF THE REGIONAL  
 PLANNING COMMISSION UNDER SFC. 79,  
 ORD. 4098, BY LETTER DATED SEPT. 15, 1964  
 AND BY BOARD ORDER DATED DEC. 11, 1964

BEARINGS ARE BASED ON THE BEARING OF  
 130<sup>TH</sup> STREET EAST AS SHOWN ON C.S.B-2689-3

FB 3212-S-53

FIELD WORK BY.....J. MENDONCA  
 OFFICE WORK BY.....J. J. EDWARDS  
 CHECKED BY.....W. J. BRENNER

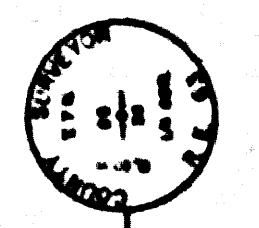
CSB-2952-1  
 A1 OF A3

114 69

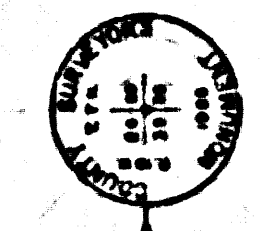
25

SECTION

T. 7 N., R. 10 W.  
S. B. M.



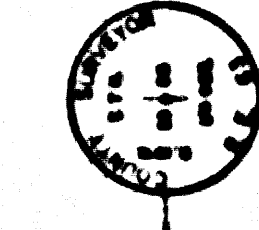
IN SECTION CORNER  
BEING CORNER OF  
SECTION 25  
T. 7 N. R. 10 W.  
S. B. M.



IN SECTION CORNER  
BEING CORNER OF  
SECTION 25  
T. 7 N. R. 10 W.  
S. B. M.

6.89' OF 50'

For description of this land, see plat of  
the same, recorded in  
the office of the  
Register of Deeds,  
Washington, D. C., 1906.



IN SECTION CORNER  
BEING CORNER OF  
SECTION 25  
T. 7 N. R. 10 W.  
S. B. M.

6.87' OF 50'

6.87' OF 50'

CSB-2000-3

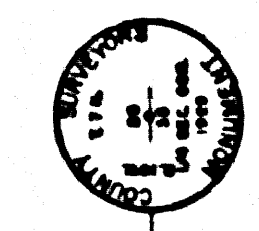
6.87' OF 50'

6.87' OF 50'

6.87' OF 50'

6.87' OF 50'

6.87' OF 50'



IN SECTION CORNER  
BEING CORNER OF  
SECTION 26  
T. 7 N. R. 10 W.  
S. B. M.

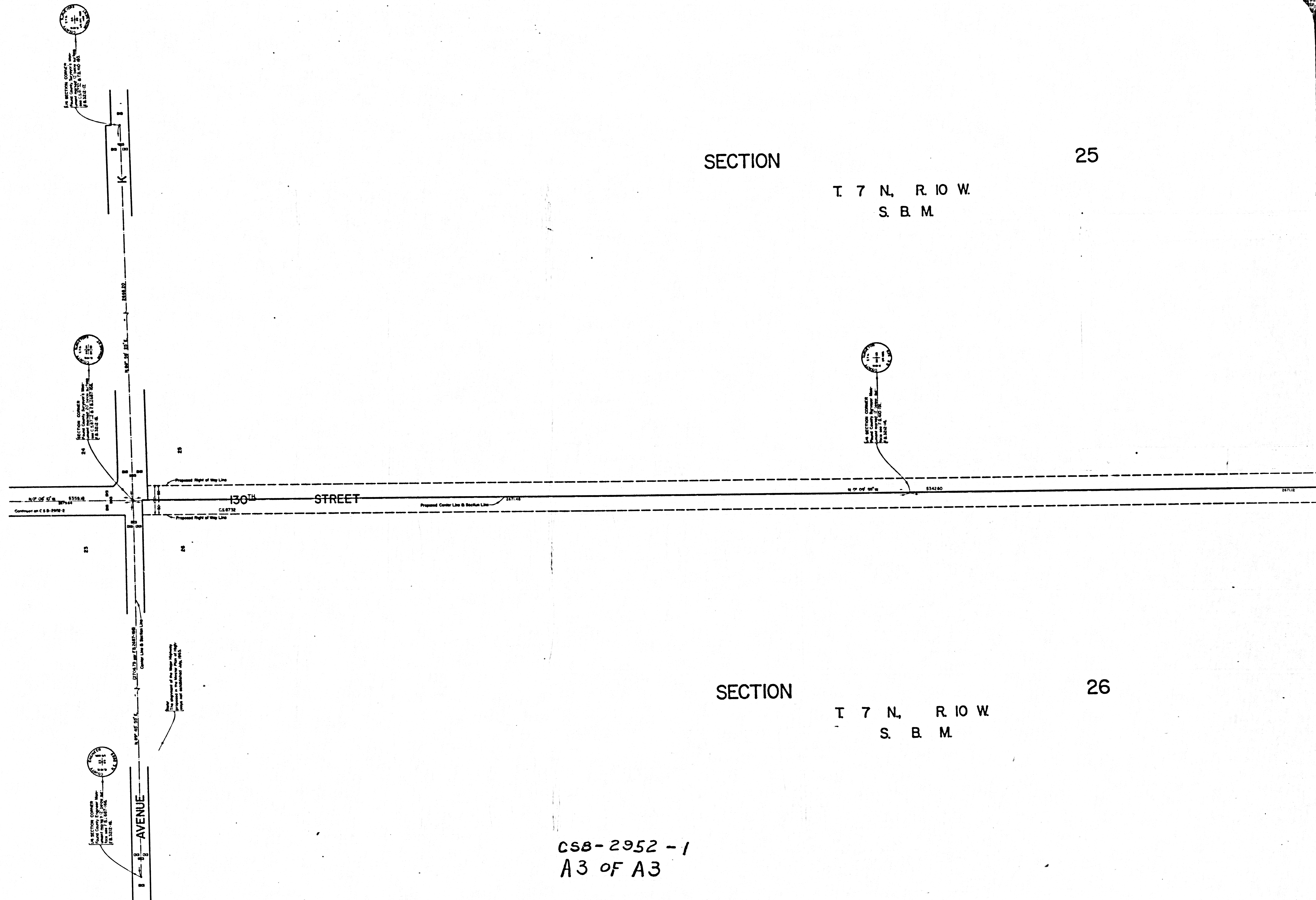
6.87' OF 50'

26

SECTION

T. 7 N., R. 10 W.  
S. B. M.

CSB-2952-1  
A2 OF A3



CSB-2952 - 1  
A3 OF A3