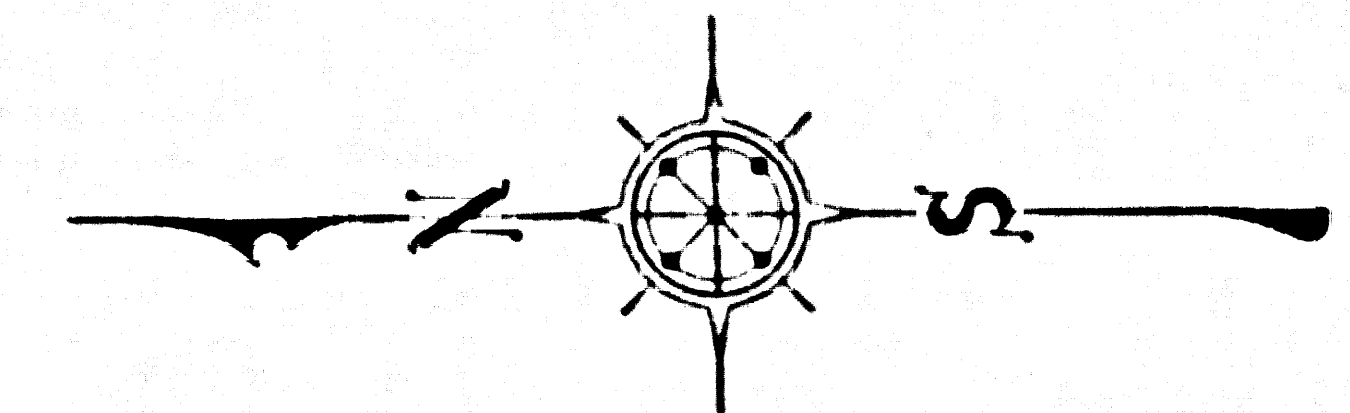
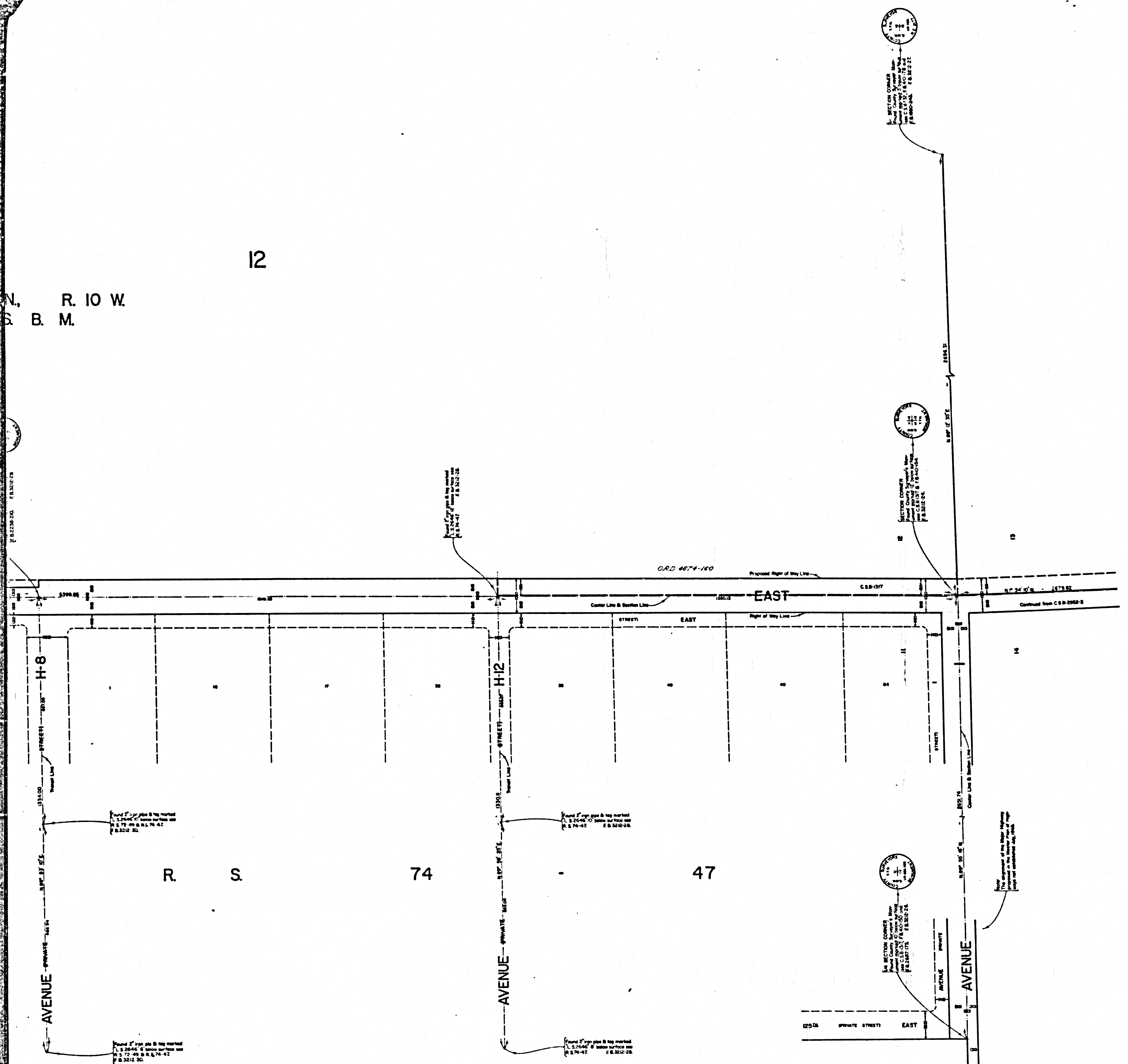


12

N. R. 10 W.
S. B. M.



COUNTY OF LOS ANGELES
 MAP OF
130TH STREET EAST
 FROM
 AVENUE M
 TO
 AVENUE E

COUNTY SURVEYOR'S MAP NO. B-2952
 SHEET NO. 3 OF 4 SHEETS
 SCALE - 1 INCH = 100 FT.

JOB NUMBER 0096.40

JOHN A. LAMBIE - COUNTY ENGINEER
 SURVEYED FEB - APRIL, 1963

SURVEYED ON REQUEST OF THE REGIONAL
 PLANNING COMMISSION UNDER SEC. 79,
 ORD. 4099, BY LETTER DATED SEPT. 15, 1964
 AND BY BOARD ORDER DATED DEC. 11, 1964

BEARINGS ARE BASED ON THE BEARING OF
 130TH STREET EAST AS SHOWN ON C.S.B. 2689-3
 F.B. 3212-5-53

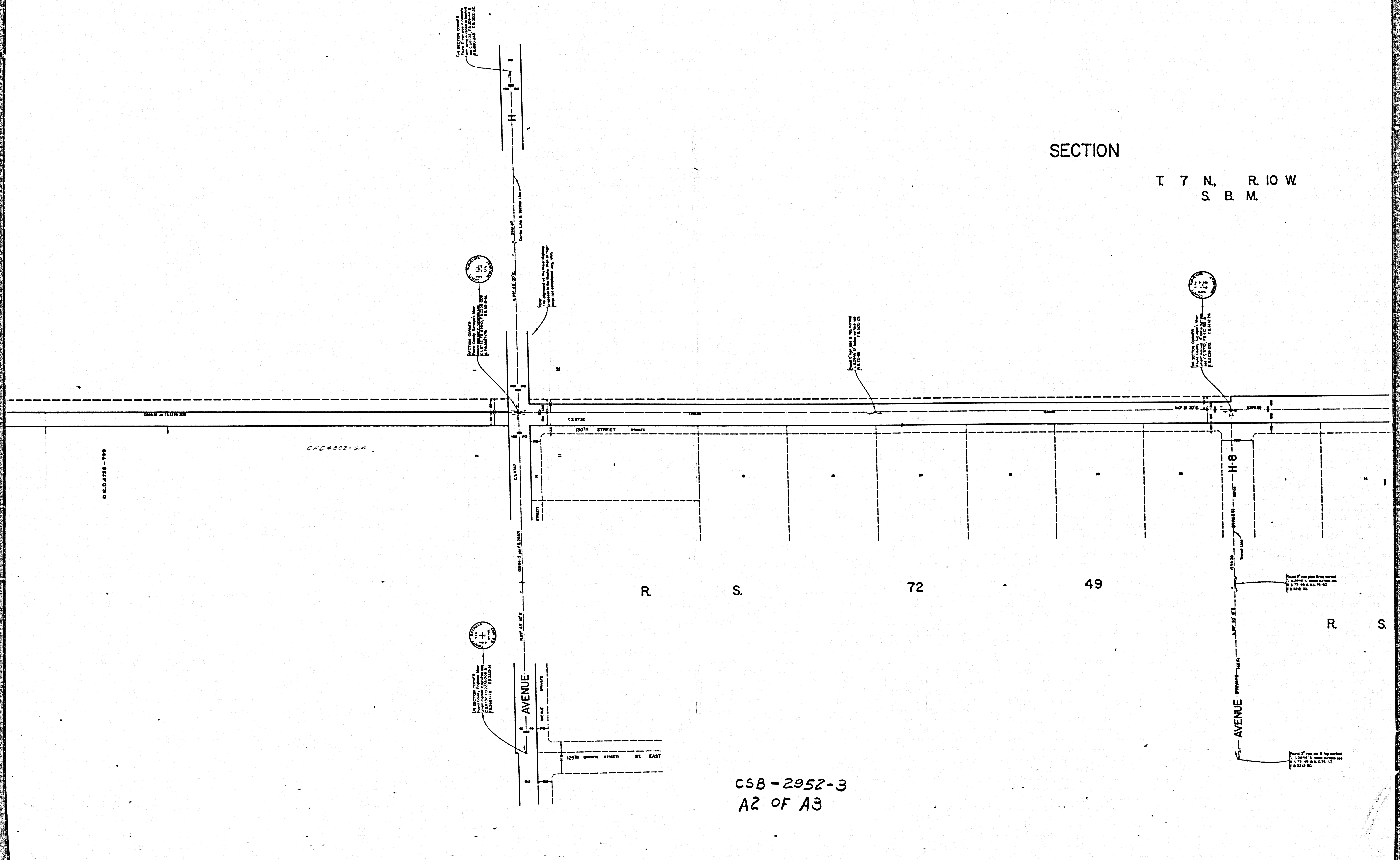
FIELD WORK BY.....J. MENDONCA
 OFFICE WORK BY.....J. L. EDWARDS
 CHECKED BY.....W. J. BRENNER

CSB - 2952-3
 A1 OF A3

IM 69

SECTION

T. 7 N., R. 10 W.
S. B. M.



G.S.D. 4738 - 779

C.F.C. 802-514

IN SECTION CORNER
Found 2 iron spikes
with
C.S. 1212-12
E. 1212-12
E. 1212-12

IN SECTION CORNER
Found 2 iron spikes
with
C.S. 1212-12
E. 1212-12
E. 1212-12

The monument of the street highway
is located in the corner of the lot
and is marked by a 4" x 4" iron spike.

Found 2 iron spikes in the corner
of the lot and is marked by a 4" x 4" iron spike.

IN SECTION CORNER
Found 2 iron spikes
with
C.S. 1212-12
E. 1212-12
E. 1212-12

IN SECTION CORNER
Found 2 iron spikes
with
C.S. 1212-12
E. 1212-12
E. 1212-12

Found 2 iron spikes in the corner
of the lot and is marked by a 4" x 4" iron spike.

Found 2 iron spikes in the corner
of the lot and is marked by a 4" x 4" iron spike.

CSB-2952-3
A2 OF A3

