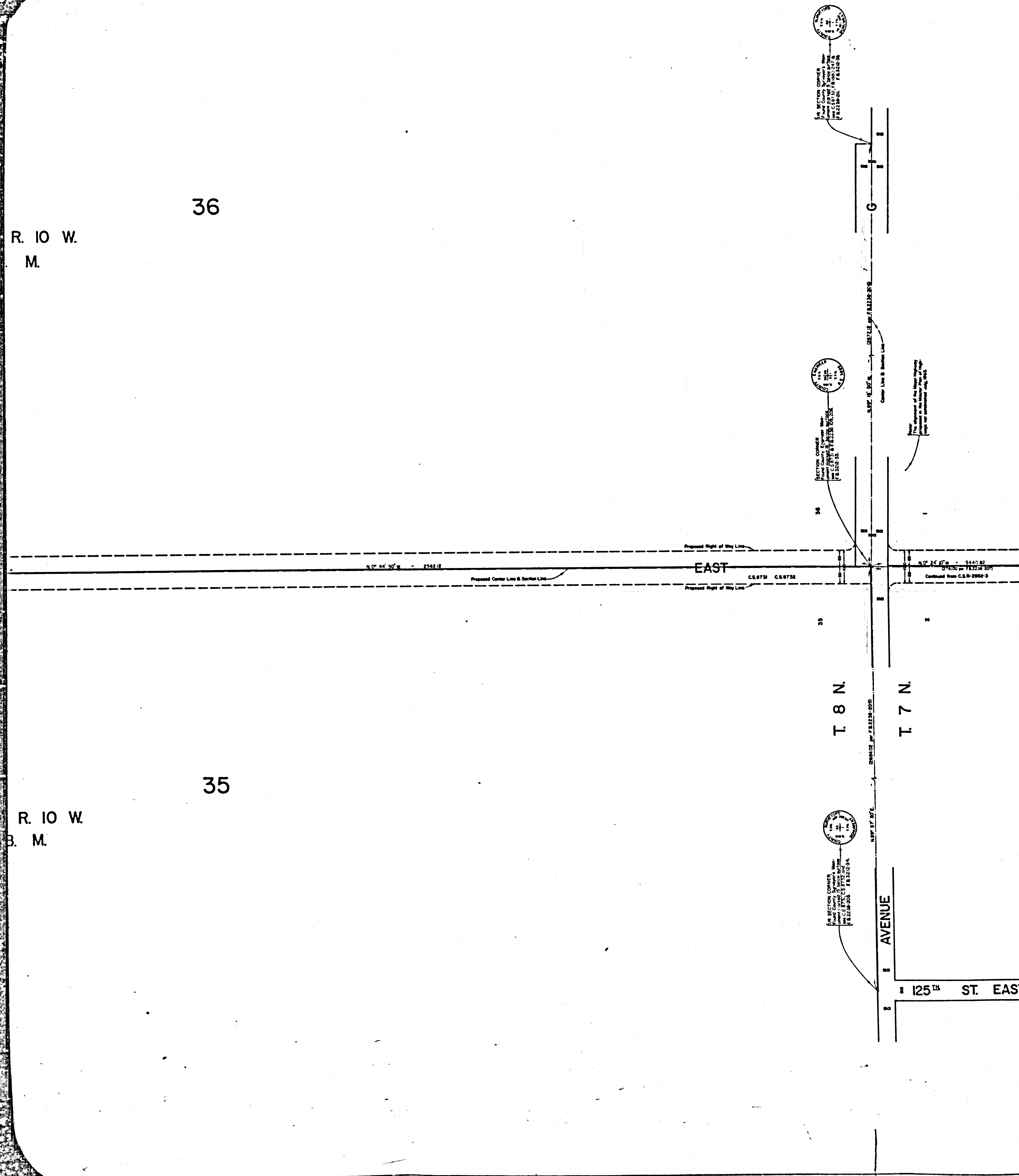


36

R. 10 W.  
M.

35

R. 10 W.  
B. M.



COUNTY OF LOS ANGELES  
 MAP OF  
**130<sup>TH</sup> STREET EAST**  
 FROM  
 AVENUE M  
 TO  
 AVENUE E

COUNTY SURVEYOR'S MAP NO. B-2952  
 SHEET NO. 4 OF 4 SHEETS  
 SCALE - 1 INCH = 100 FT.

JOB NUMBER 0096.40

JOHN A. LAMBIE - COUNTY ENGINEER  
 SURVEYED FEB. - APRIL, 1963

SURVEYED ON REQUEST OF THE REGIONAL  
 PLANNING COMMISSION UNDER SEC. 79,  
 ORD. 4099, BY LETTER DATED SEPT. 16, 1964  
 AND BY BOARD ORDER DATED DEC. 11, 1961

BEARINGS ARE BASED ON THE BEARINGS OF  
 130TH STREET EAST AS SHOWN ON C.S.B. 2689-3

FB 3212-5-53

FIELD WORK BY.....J. MENDONÇA  
 OFFICE WORK BY.....J. J. EDWARDS  
 CHECKED BY.....W. J. BRENNER

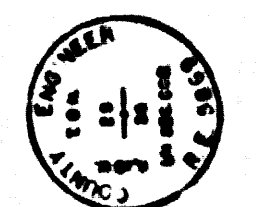
111 69

CSB-2952-4  
 A1 OF A3

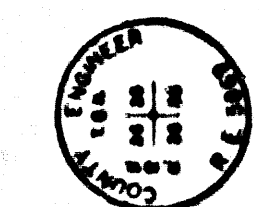
SECTION

36

T 8 N., R. 10 W.  
S. B. M.



IN SECTION CORNER  
LAND COUNTY REGISTER  
C.S.B. - 2570  
18 25 25 25



SECTION CORNER  
LAND COUNTY REGISTER  
C.S.B. - 2570  
18 25 25 25

25

2701.8  
S 87° 55' E  
C.S.B. - 2570

For adjustment of the Survey of 1887  
see accompanying plat, 1887.

36



IN SECTION CORNER  
LAND COUNTY REGISTER  
C.S.B. - 2570  
18 25 25 25

SECTION

35

T 8 N., R. 10 W.  
S. B. M.



IN SECTION CORNER  
LAND COUNTY REGISTER  
C.S.B. - 2570  
18 25 25 25

26

1821.6  
S 87° 55' W  
Section Line

35

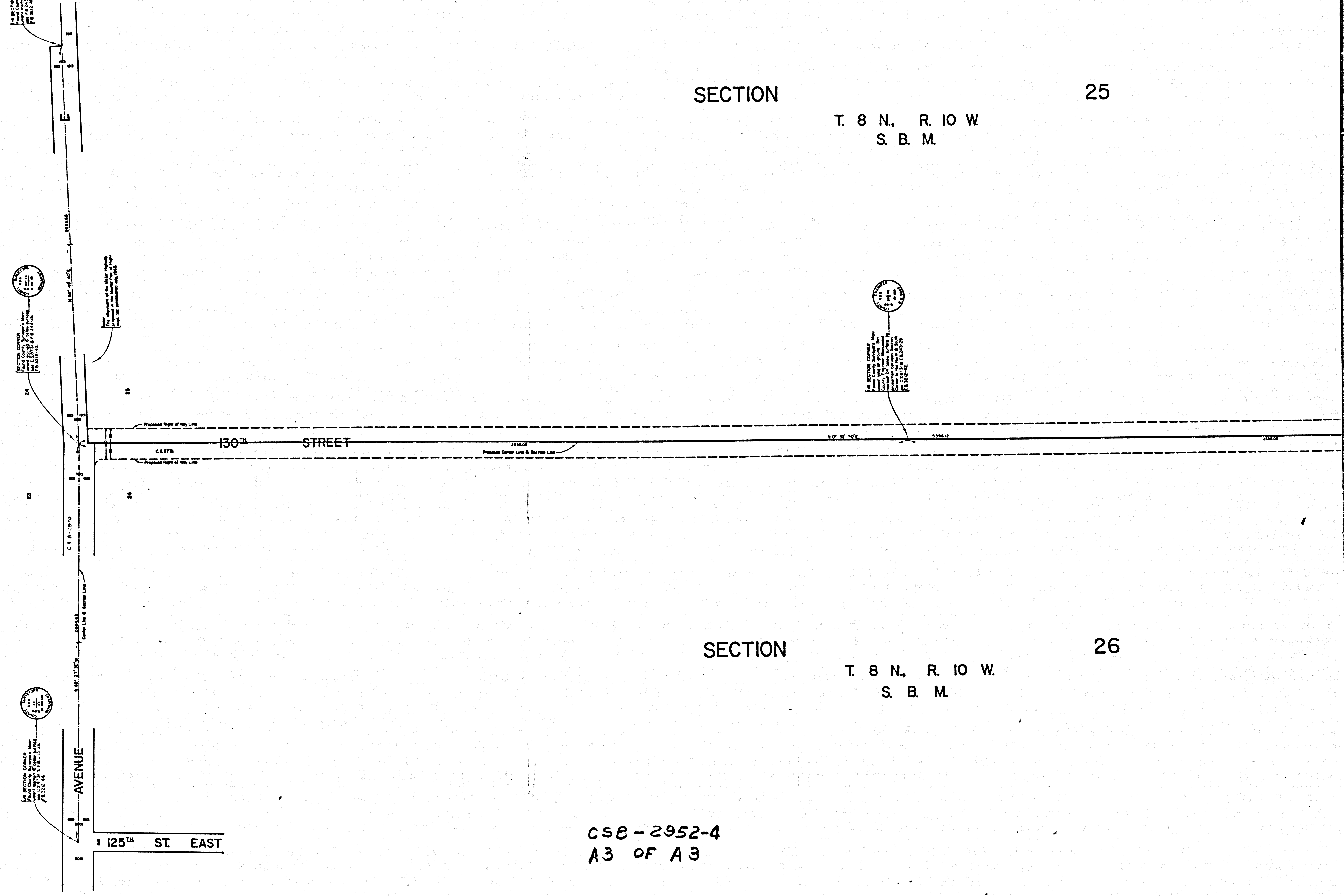
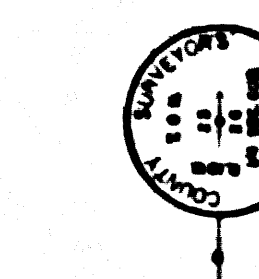
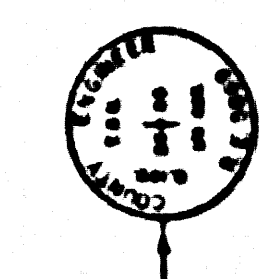
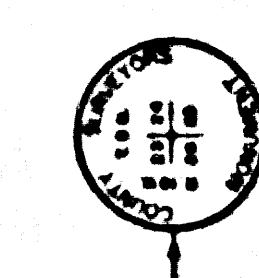
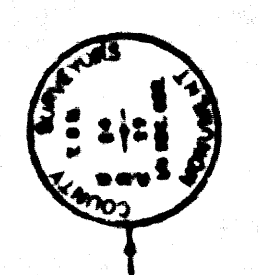
125<sup>TH</sup> ST. EAST

CSB - 2952-4  
A2 OF A3

SECTION

25

T. 8 N., R. 10 W.  
S. B. M.



SECTION

26

T. 8 N., R. 10 W.  
S. B. M.

CSB-2952-4  
A3 OF A3