

SAN

PEDRO

M. R. 32 - 97-98

LOT 3

BLK. C

LOT 4

FREIGHTWAY

ALAMEDA ST.

LOT 4

CHANNEL

TRACT

NO. 4546  
M. B. 50-21-22

MILLPOINT AVE.

NO. 28131

ST. 1

ST. 2

ST. 3

ST. 4

ST. 5

ST. 6

ST. 7

ST. 8

ST. 9

ST. 10

ST. 11

ST. 12

ST. 13

ST. 14

ST. 15

ST. 16

ST. 17

ST. 18

ST. 19

ST. 20

ST. 21

ST. 22

ST. 23

ST. 24

ST. 25

ST. 26

ST. 27

ST. 28

ST. 29

ST. 30

SAN DIEGO

DOMINGUEZ

AVE.

MARTIN ST.

PONTINE TRACT

M. B. 716-29-32

AVE.

NO. 68

NO. 69

NO. 70

NO. 71

NO. 72

NO. 73

NO. 74

NO. 75

NO. 76

NO. 77

NO. 78

NO. 79

NO. 80

NO. 81

NO. 82

NO. 83

NO. 84

NO. 85

NO. 86

NO. 87

NO. 88

NO. 89

NO. 90

COUNTY OF LOS ANGELES  
 MAP OF  
**WILMINGTON AVENUE**  
 FROM  
 LOMITA BOULEVARD  
 TO  
 GREENLEAF BOULEVARD  
 COUNTY SURVEYORS MAP NO. B-2953  
 SHEET NO. 2 OF 3 SHEETS  
 SCALE:- 1 INCH=100 FT.

JOB NUMBER 0074.60

JOHN A. LAMBIE - COUNTY ENGINEER  
SURVEYED MARCH 1964

SURVEYED ON REQUEST OF THE REGIONAL  
PLANNING COMMISSION UNDER SEC. 79,  
ORD. 4099, BY LETTER DATED FEB. 5, 1964  
AND BY BOARD ORDER DATED DEC. 11, 1951

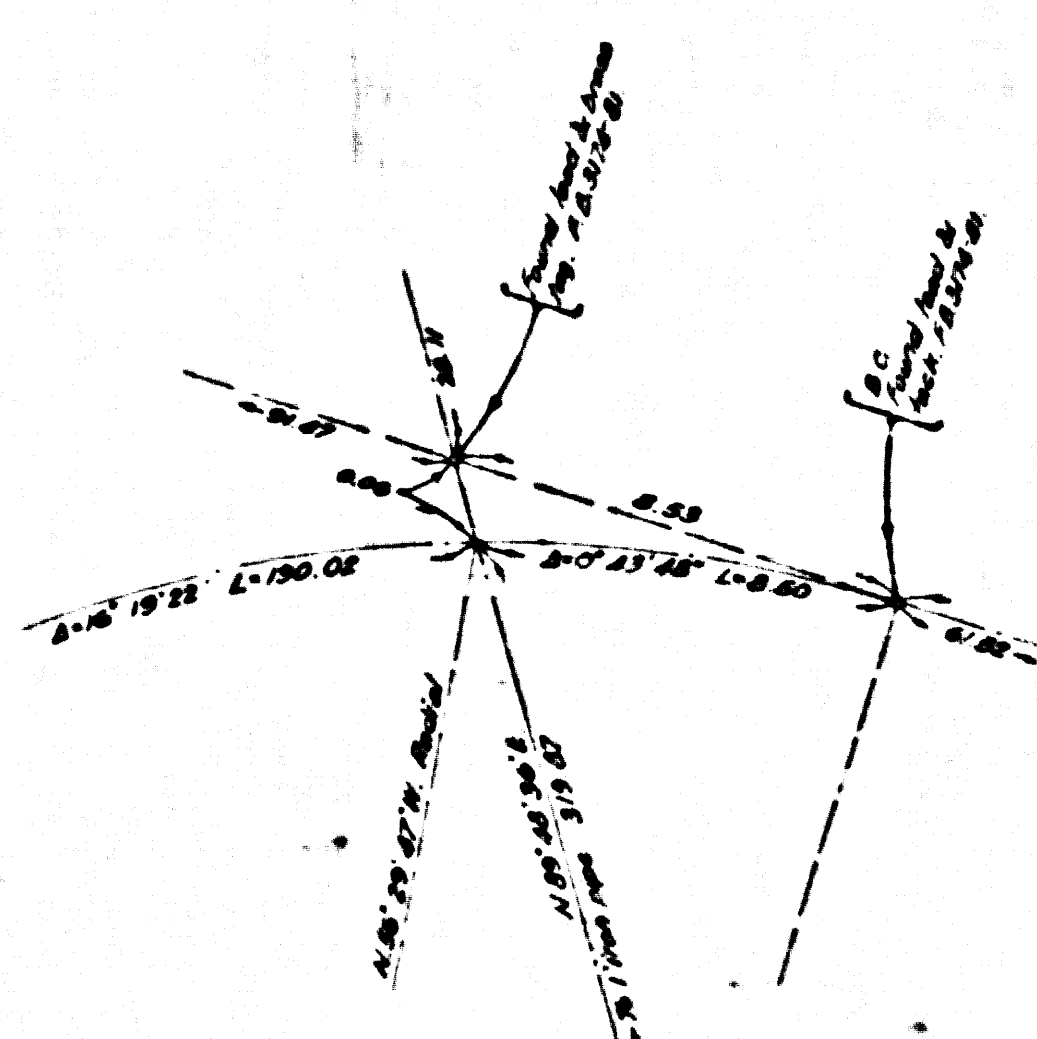
BEARINGS ARE BASED ON THE CALIFORNIA  
COORDINATE SYSTEM ZONE 7 PER SEC. 8609  
PUBLIC RESOURCES CODE. SEE C.S. 6423

F. 3174 - 5 - 127

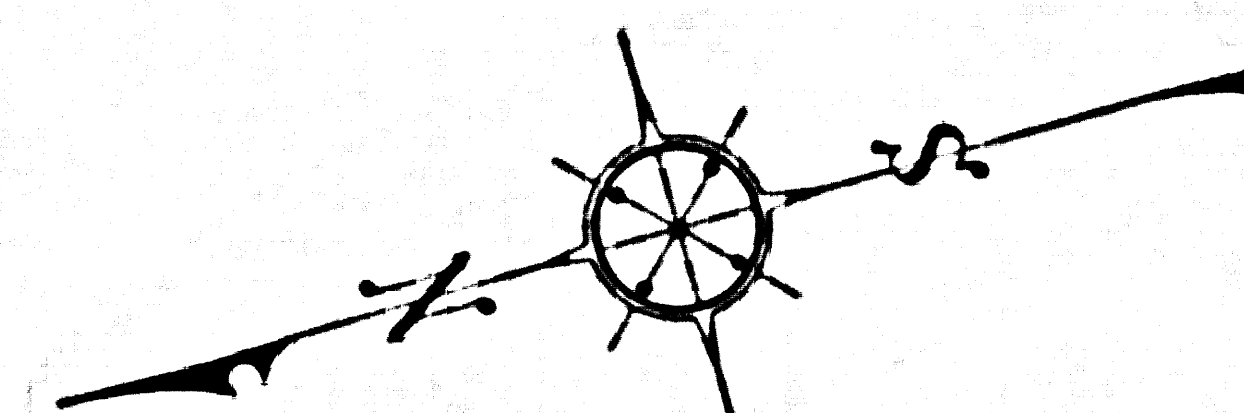
FIELD WORK BY... D. L. BURKHOLDER  
OFFICE WORK BY... T. M. BURNS  
CHECKED BY... G. E. BARR

IM 26-28

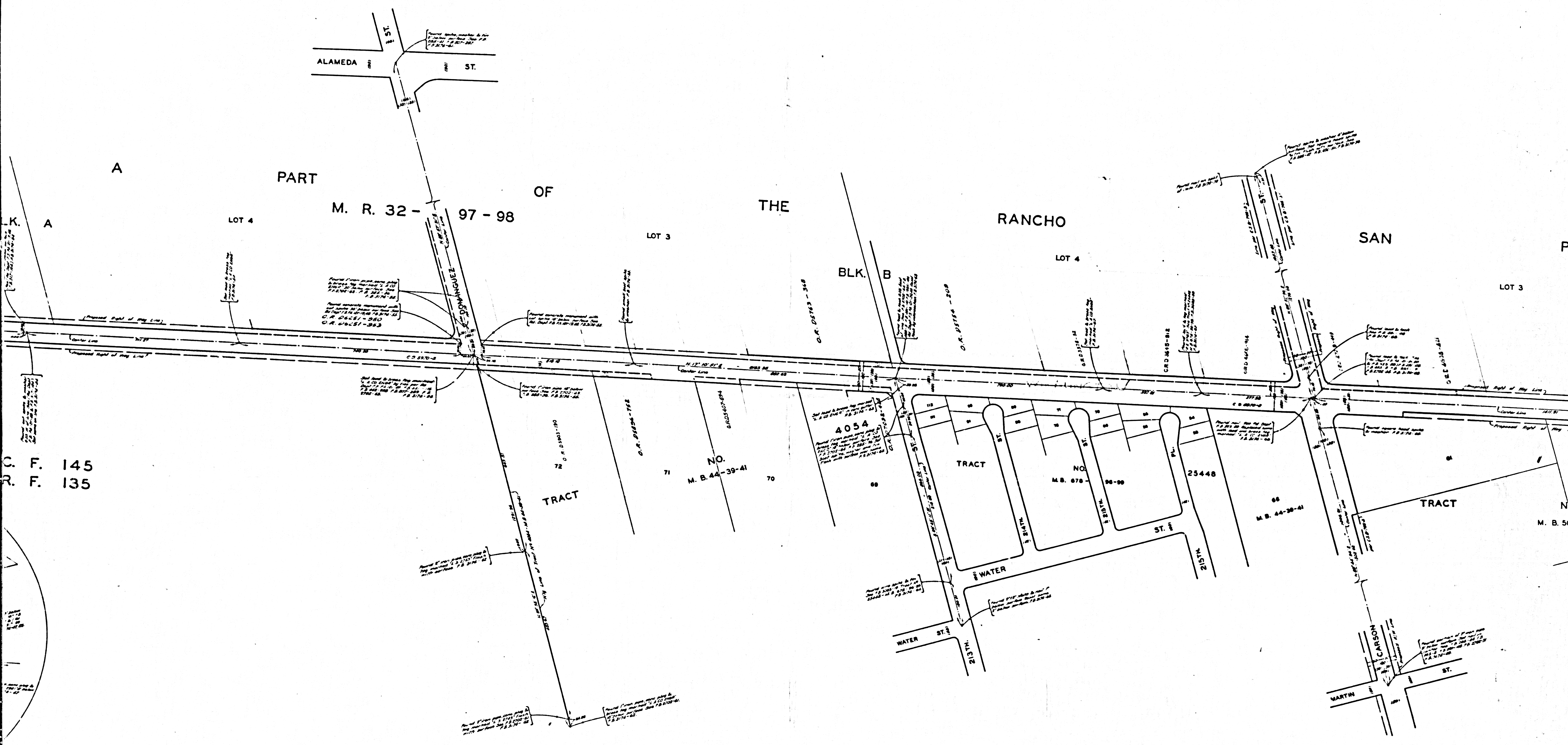
CSB - 2953-2  
A1 OF A3



DETAIL  
NO SCALE







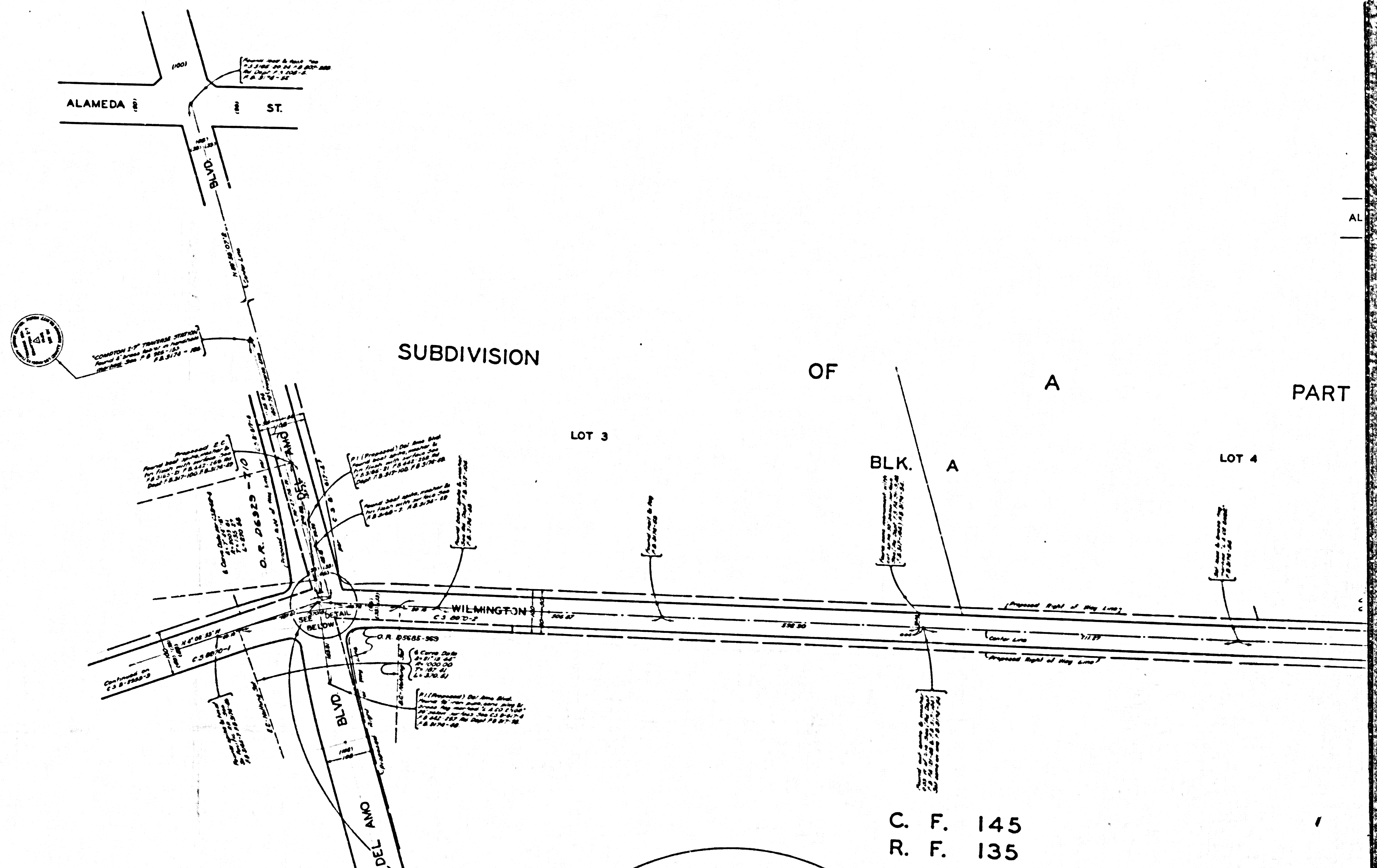
C. F. 145  
R. F. 135

CSB-2953-2  
A2 OF A3

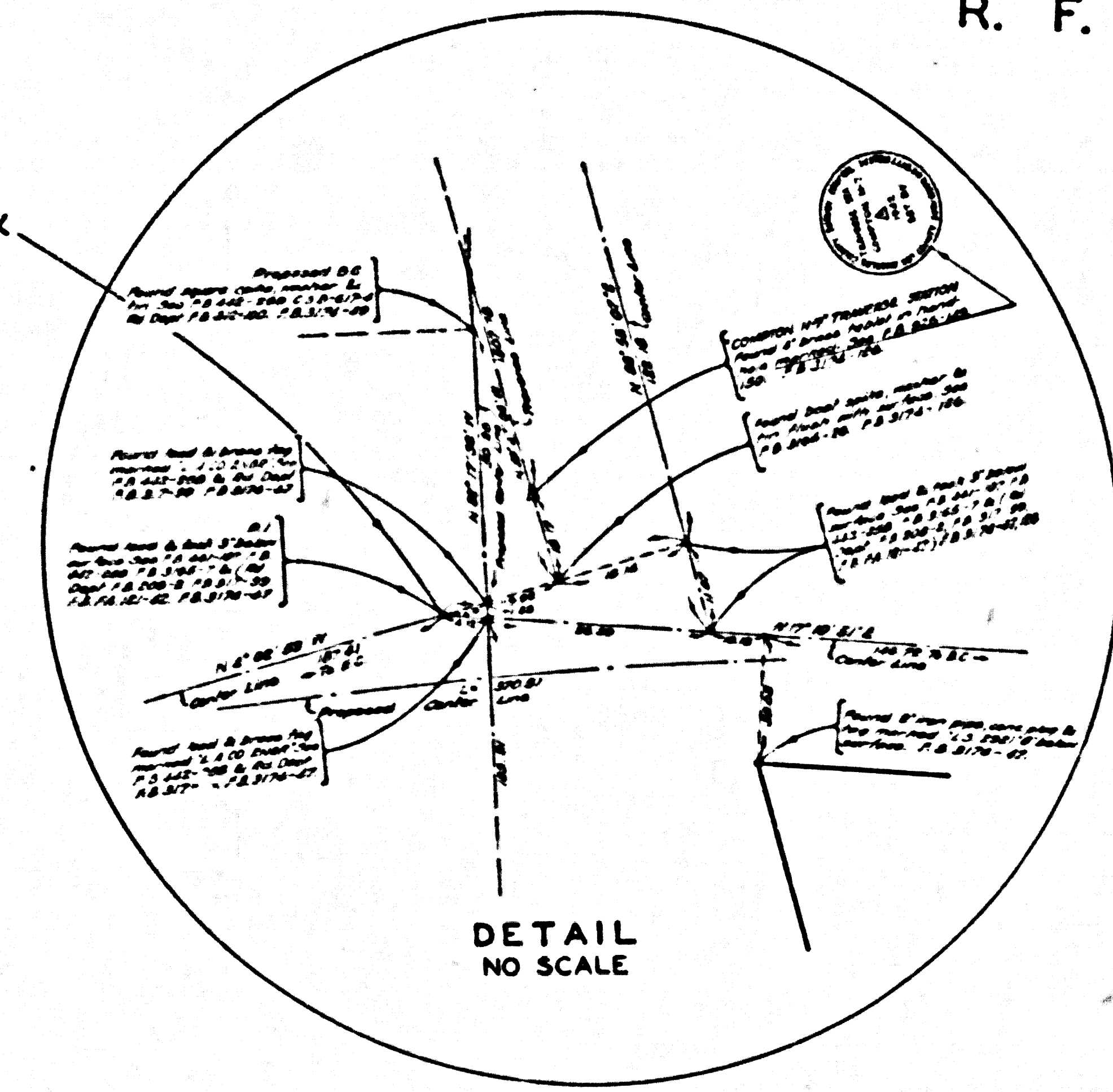


SHEET NO 3 OF 3 SHEETS  
CONJUNCTION SURVEY MAP NO B-

SHEET NO 3 OF 3 SHEETS  
CONJUNCTION SURVEY MAP NO B- 5823



C. F. 145  
R. F. 135



CSB-2953-2  
A3 OF A3