

10

C.S.B.-418

C.S.B.-830-1

1431.27

Section Line

SECTION 9

CONTINUED FROM SHEET 1  
5710.52  
2632.27

SECTION CORNER  
Placed County Surveyor's monument  
marked "S" below surface, see C.S.  
B-830-1. F.B. 3211-15.



1/4 SECTION CORNER  
Placed County Engineer's monument  
marked "E" below surface, see  
Ord. 4099. Bearings and feet  
shown to the north and surface  
corner to the south see C.S.B. 830-1  
F.B. 3211-14.

1/4 SECTION CORNER  
Placed County Surveyor's monument  
marked "S" below surface, see C.S.  
B-830-1. F.B. 3211-16.



SECTION 9, T.8N., R.14W.

1/4 SECTION CORNER  
Placed County Surveyor's monument  
marked "S" below surface, see C.S.  
B-830-1. F.B. 3211-25.



Center Line and Section Line

C.S.B.-418

C.S.B.-830-1

2632.27

SECTION 8

WEST

CONTINUED FROM SHEET 1  
5710.52  
2632.27

8

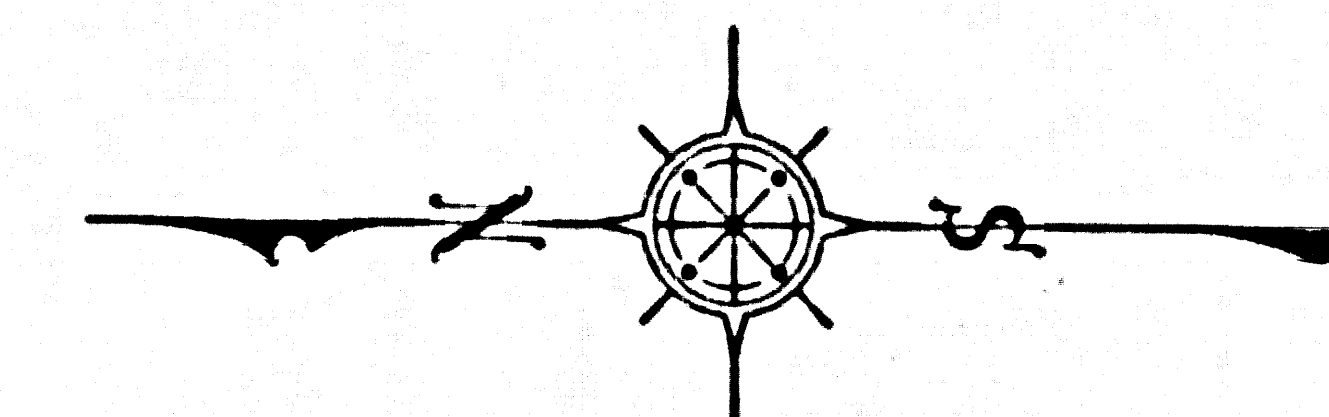
1/4 SECTION CORNER  
Placed County Surveyor's monument  
marked "S" below surface, see C.S.  
B-830-1. F.B. 3211-27.



SECTION 8, T.8N., R.14W.

CSB-2954-2  
A1 OF A3

1M 72



COUNTY OF LOS ANGELES  
MAP OF  
**140TH STREET WEST**  
FROM  
AVENUE D  
TO  
AVENUE A  
COUNTY SURVEYORS MAP NO. B-2954  
SHEET NO. 2 OF 2 SHEETS  
SCALE:-1 INCH = 100 FT.

JOB NUMBER 0096.42

JOHN A. LAMBIE - COUNTY ENGINEER  
SURVEYED MARCH, 1985

SURVEYED ON REQUEST OF THE REGIONAL  
PLANNING COMMISSION UNDER SEC. 79  
ORD. 4099 BY LETTER DATED SEPT. 15, 1984  
AND BY BOARD ORDER DATED DEC. 11, 1951

BEARINGS ARE BASED ON THE CALIFORNIA  
COORDINATE SYSTEM ZONE 7 PER SEC. 8809  
PUBLIC RESOURCES CODE SEE C.S. 9423

F.B. 3211-5-28

FIELD WORK BY..... J. S. COATES  
OFFICE WORK BY..... G. L. LUDVICKSON  
CHECKED BY..... S. SHIMODA



1/4 SECTION CORNER  
Found County Surveyor's monument  
marked "16" below surface. See C.S.  
B-430-1  
F.B. 3211-17

TRIANGULATION STATION "LITTLE BUTTES"  
F.B. 3211-12

TRIANGULATION STATION "LOPE"  
Found U.S. Canal and Quabbin Survey  
monument marked "24" below surface.  
F.B. 3211-12

Found 1/2" iron pipe flush  
with surface.  
F.B. 3211-12

Set 1" iron pipe, concrete plug and  
cross leg marked "11.4.14.17"  
1/2" below surface by intersection.  
F.B. 3211-12

SECTION CORNER  
Found County Surveyor's monument  
marked "17" below surface. See C.S.  
B-430-1  
F.B. 3211-12

SECTION 4, T.8N., R.14W.

Found 2 1/2" stake and leg marked  
"3.3.2008" flush with surface.  
F.B. 3211-12

Found 1/2" iron pipe flush with  
surface.  
F.B. 3211-12

1/4 SECTION CORNER  
Found County Surveyor's monument  
marked "16" below surface. See C.S.  
B-430-1  
F.B. 3211-12

1/4 SECTION CORNER  
Found County Surveyor's monument  
marked "16" below surface. See C.S.  
B-430-1  
F.B. 3211-12

SECTION CORNER  
Found County Surveyor's monument  
marked "16" below surface. See C.S.  
B-430-1  
F.B. 3211-20

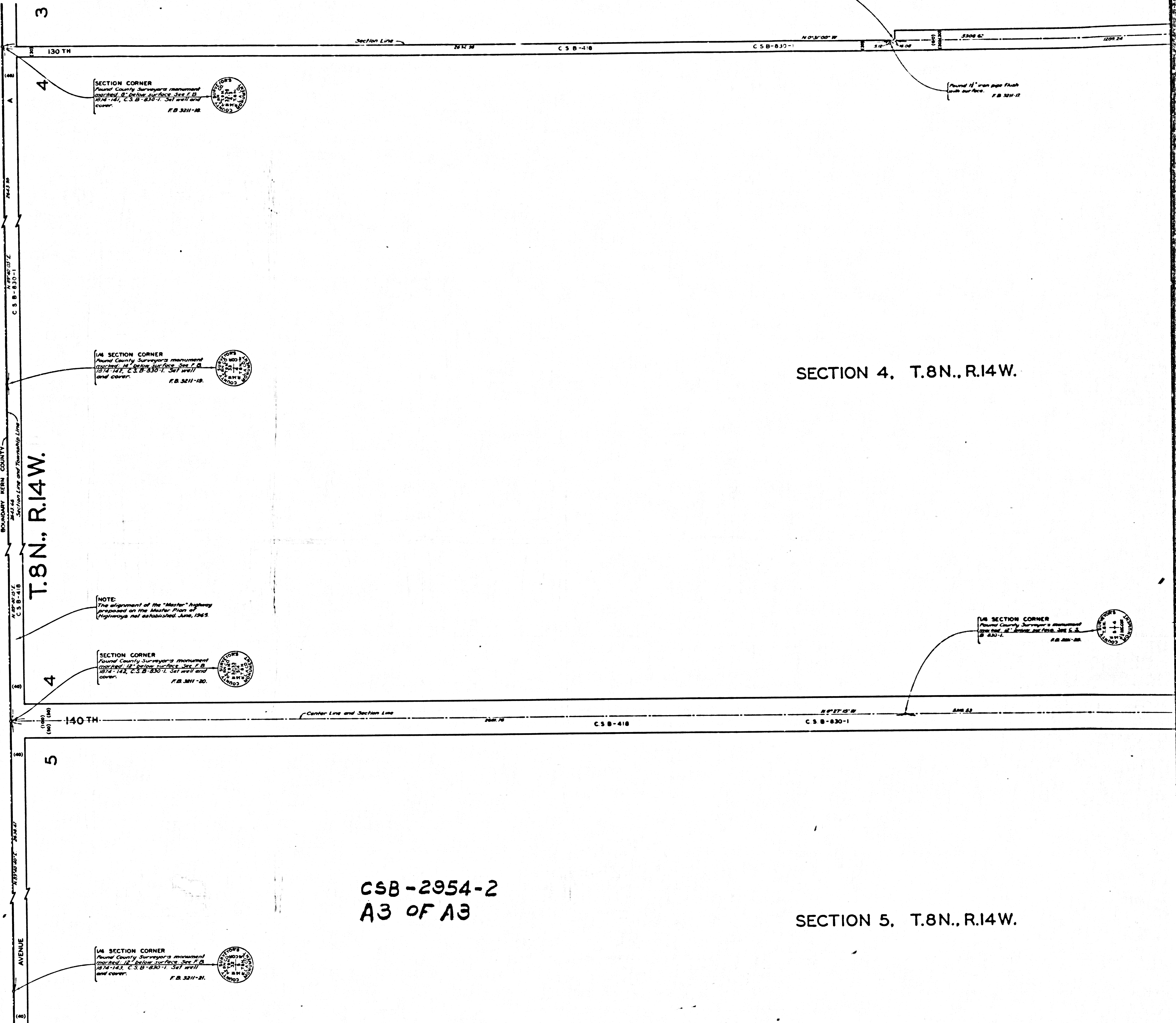
SECTION 5, T.8N., R.14W.

CSB-2954-2  
A2 OF A3

1/4 SECTION CORNER  
Found County Surveyor's monument  
marked "16" below surface. See C.S.  
B-430-1  
F.B. 3211-21



T.9N., R.14W.  
BOUNDARY, IERN COUNTY  
T.8N., R.14W.



SECTION 4, T.8N., R.14W.

CSB-2954-2  
A3 OF A3

SECTION 5, T.8N., R.14W.