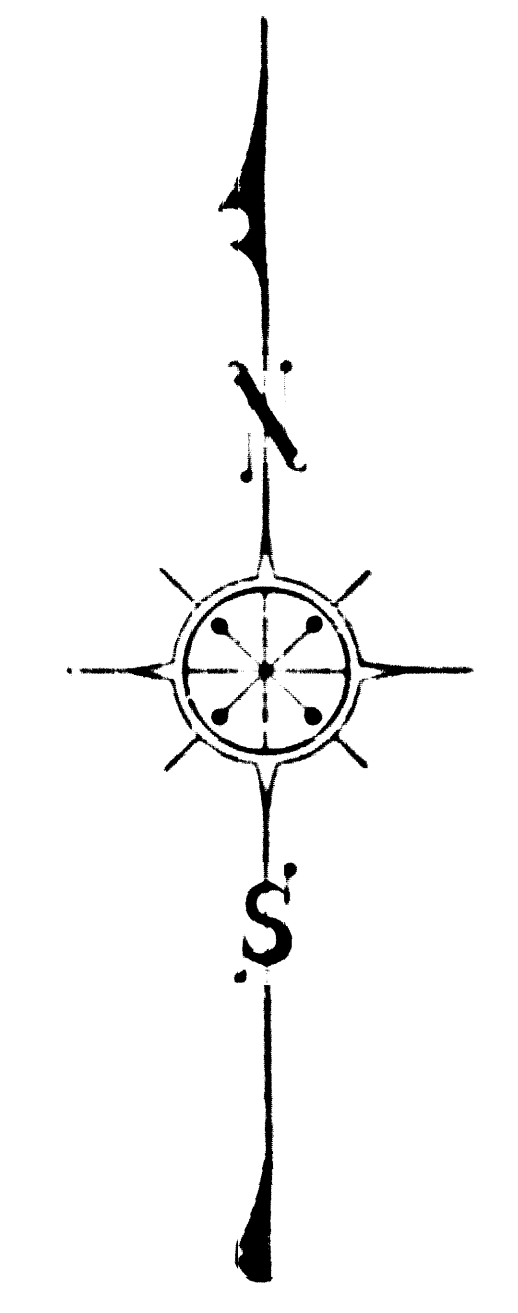
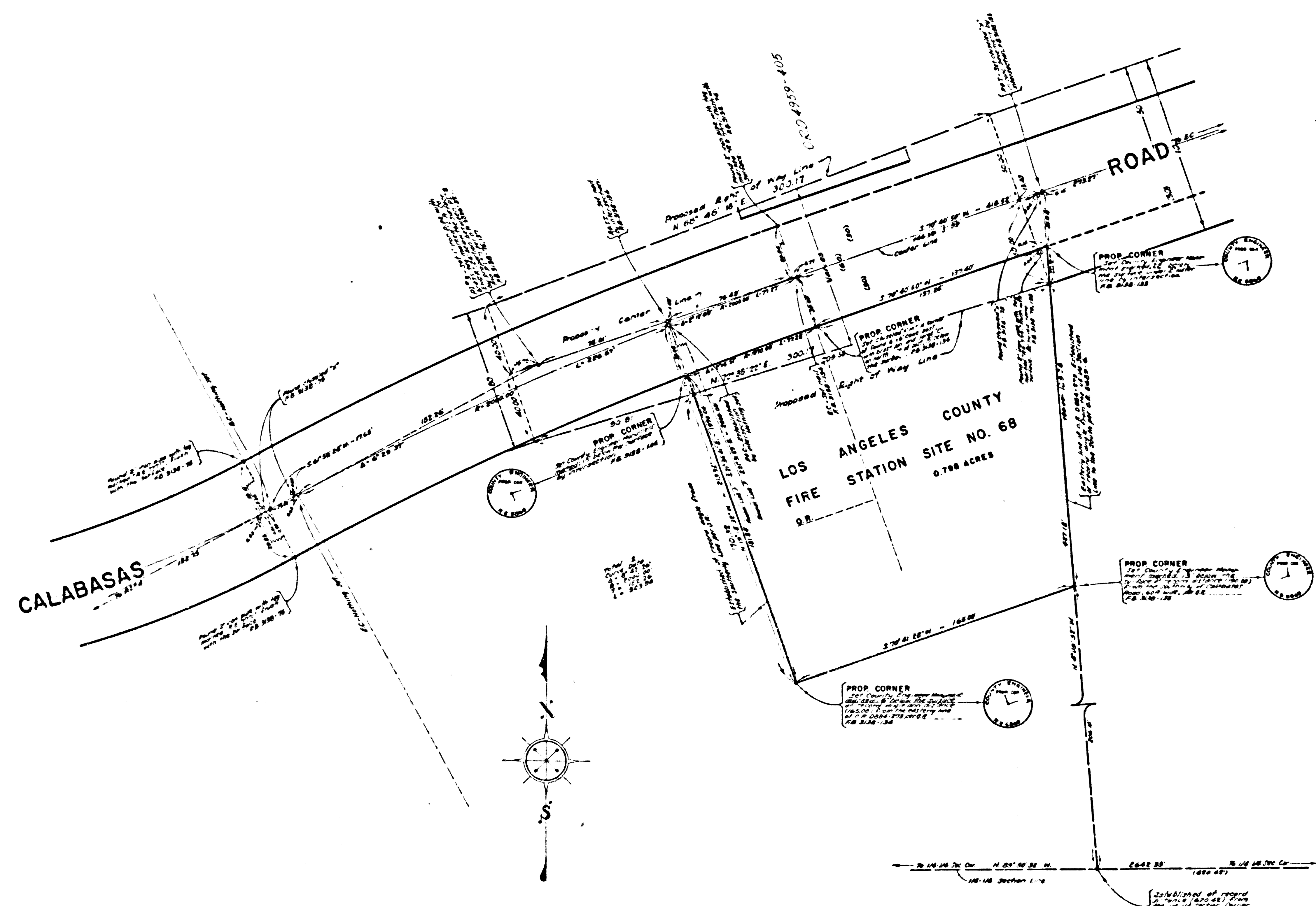


SECTION 22
S. B. M.



COUNTY OF LOS ANGELES
MAP OF
**LOS ANGELES COUNTY
FIRE STATION SITE NO. 68**
CALABASAS AREA
BEING A PORTION OF THE N.E. 1/4 OF THE
S.W. 1/4 OF SECTION 22, T.1.N.-R.17.W., S.B.M.
COUNTY SURVEYOR'S MAP NO. B-2955
SCALE - 1 INCH = 100 FT.

JOB NUMBER 0038.37
JOHN A. LAMBIE - COUNTY ENGINEER
SURVEYED JULY, 1965
SURVEYED ON REQUEST OF THE CHIEF ENGINEER
COUNTY FIRE PROTECTION DISTRICTS UNDER SEC.
79, ORD. 4099, BY LETTER DATED MARCH 2, 1965
BEARINGS ARE BASED ON THE BEARING OF
CALABASAS ROAD AS SHOWN ON C.S.B.-1934
F. B. 3.58 - 69-141

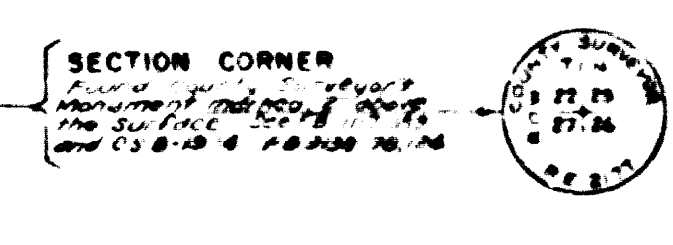
IM 60
159-077

FIELD WORK BY..... J. P. MENNE
W. M. SPRIGGS
OFFICE WORK BY..... G. D. BAILEY
CHECKED BY..... S. SHINODA

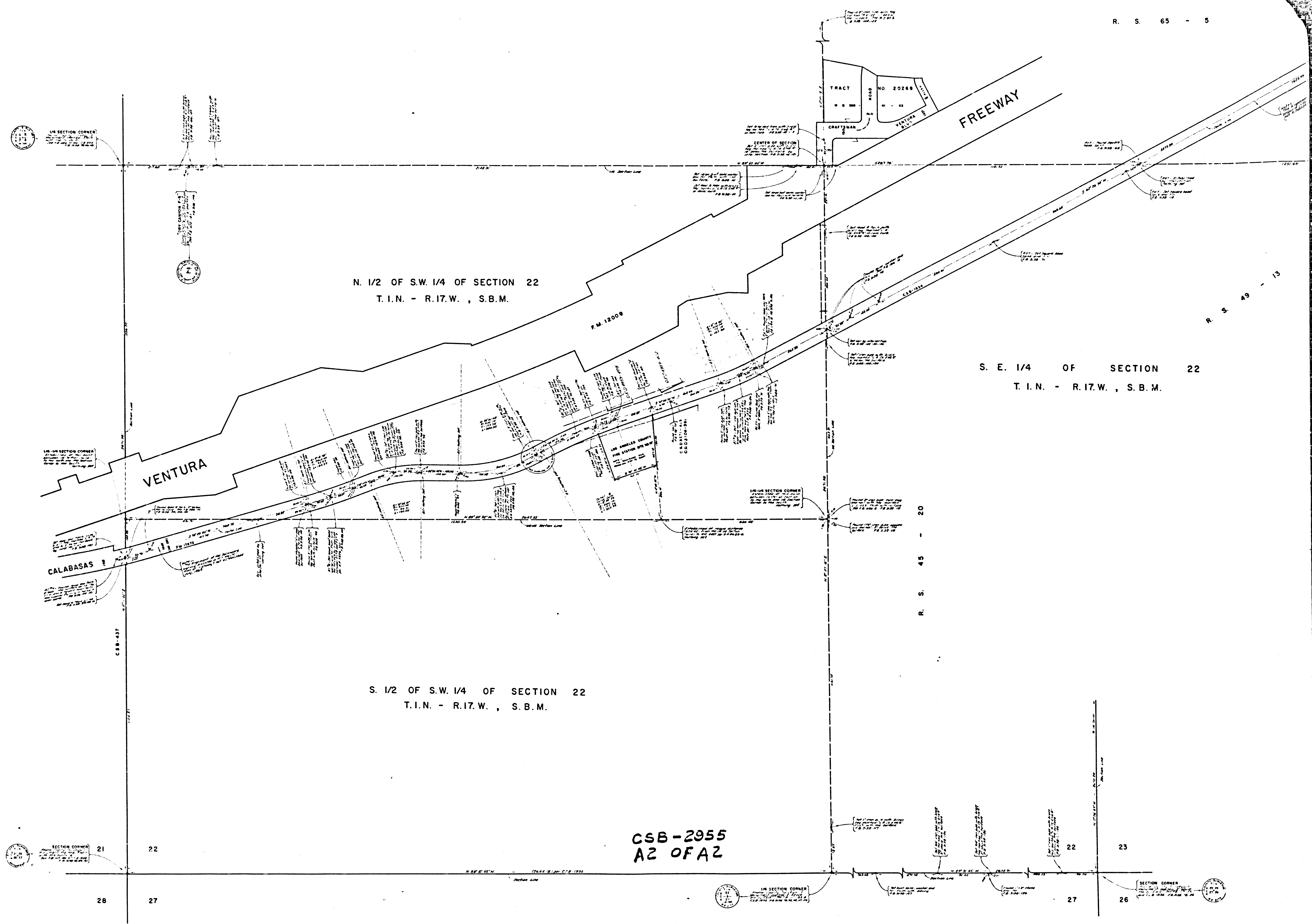
NOTE:-
FOR TOPOGRAPHY PRIOR TO CONSTRUCTION
SEE SURVEY DIVISION FILE MAP NO. PT. NO. 391

MARGINAL MAP
SCALE - 1 INCH = 30 FT.

CSB-2955
A1 OF A2



PROPOSED RELOCATION OF FIRE STATION SITE NO. 68
FOR EXISTING SITE - SEE C.S.B. 1934



N. 1/2 OF S.W. 1/4 OF SECTION 22
T.I.N. - R.17.W. , S.B.M.

S. E. 1/4 OF SECTION 22
T.I.N. - R.17.W. , S. B. M.

S. 1/2 OF S.W. 1/4 OF SECTION 22
T.I.N. - R.17.W. , S. B. M.

CSB-2955
A2 OF A2

1/4 SECTION CORNER

CENTER OF SECTION

1/4 SECTION CORNER

1/4 SECTION CORNER

SECTION CORNER

SECTION CORNER

21

22

22

23

28

27

27

26

VENTURA

CALABASAS

TRACT NO. 20268

FREEWAY

F.M. 12009

C.S.B.-437

R. S. 45 - 20

1764.8120 C.S.B. 1954