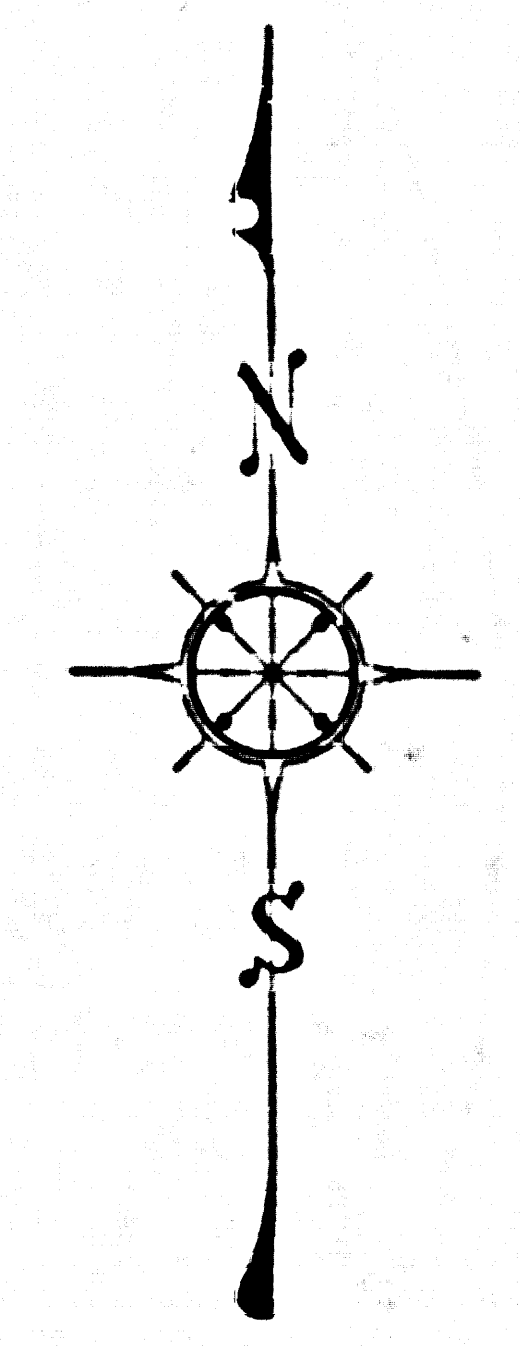


PORTION OF N. 1/2, SEC. 20, T. 5 N., R. 10 W.



COUNTY OF LOS ANGELES
 MAP OF
AVENUE V-8
 FROM
 PEARBLOSSOM HWY.
 TO
 87TH STREET EAST
 COUNTY SURVEYORS MAP NO. B-2956
 SHEET NO. 2 OF 2 SHEETS
 SCALE: - 1 INCH = 100 FT.

JOB NUMBER 0096 46
 JOHN A. LAMBIE - COUNTY ENGINEER
 SURVEYED JAN - FEB. 1965
 SURVEYED ON REQUEST OF THE REGIONAL
 PLANNING COMMISSION UNDER SEC. 79,
 ORD. 4099, BY LETTER DATED OCT. 26, 1964
 AND BY BOARD ORDER DATED DEC. 11, 1961.
 BEARINGS ARE BASED ON THE BEARING OF
 THE CENTER LINE OF FORT TEJON RD. PER
 C.S.B. - 1571 - 2.
 F.B. 3225 - 5 - 28
 FIELD WORK BY..... J.C. PIERCE
 OFFICE WORK BY..... M. HANASU
 CHECKED BY..... G.E. BARR

*Case V-8 from E of 96th St E to Pearblossom Rd
 delineated from m.p. of Hwy 1st
 Amendment no 700, app. 7-29-71*

CSB-2956-2
 A1 of A3

IM 66

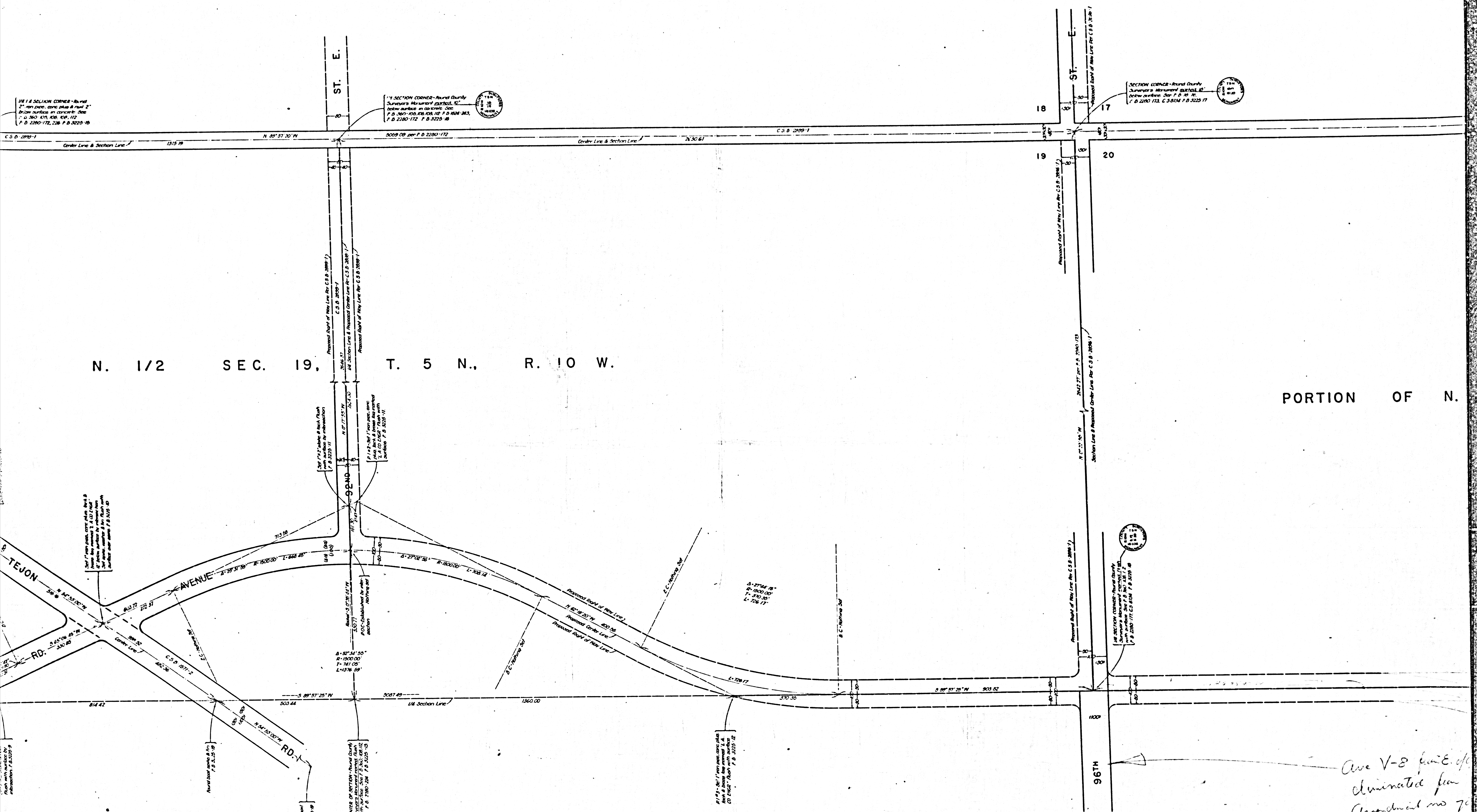
1/4 SECTION CORNER - Round County
Surveyors Measurement SURVEY 1871
Center surface in corner - 2"
P. D. 280-172, 286, P. D. 3225-18

1/4 SECTION CORNER - Round County
Surveyors Measurement SURVEY 1871
Center surface in corner - 2"
P. D. 280-172, 286, P. D. 3225-18

SECTION CORNER - Round County
Surveyors Measurement SURVEY 1871
Center surface in corner - 2"
P. D. 280-172, 286, P. D. 3225-18

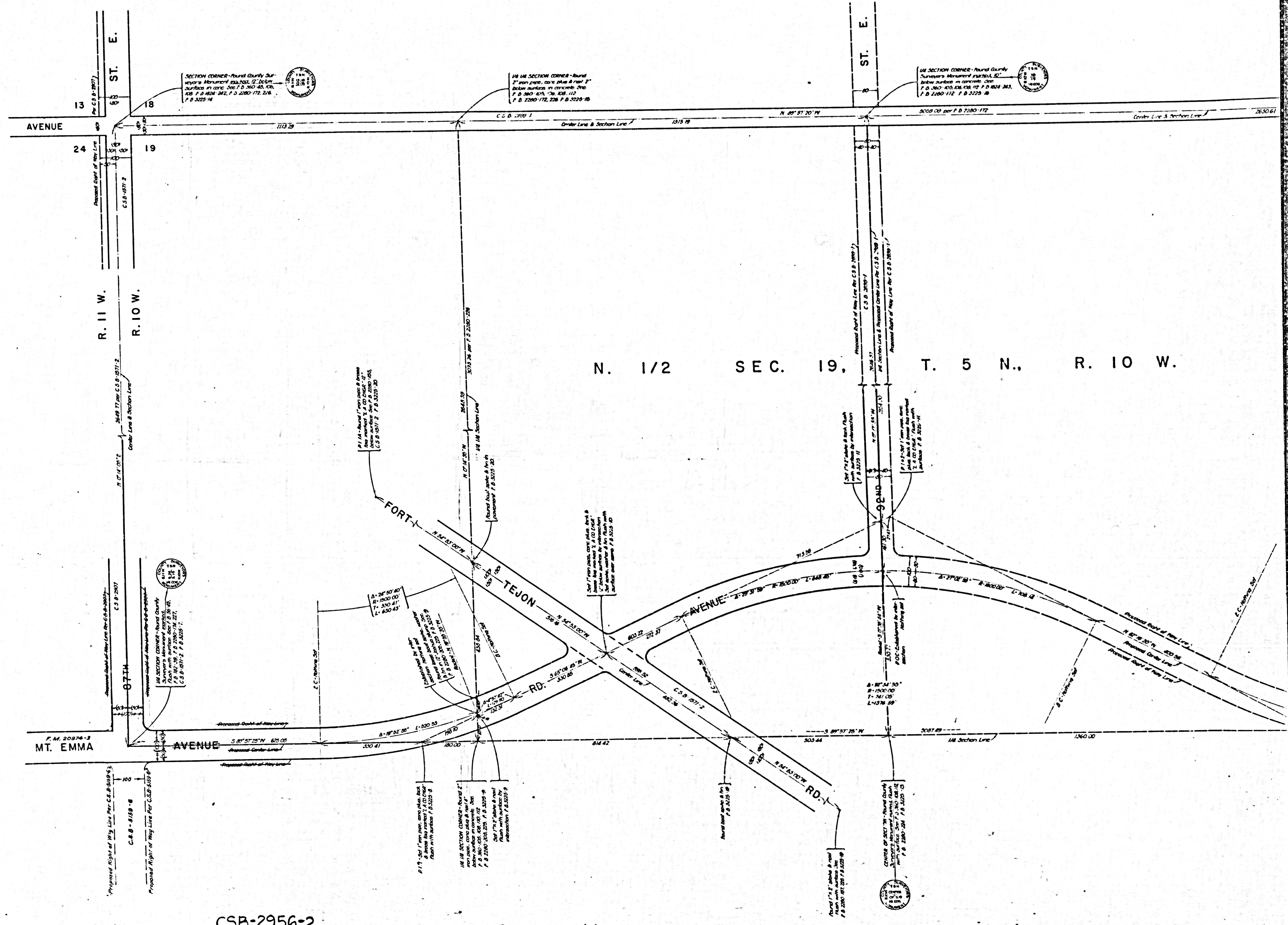
N. 1/2 SEC. 19, T. 5 N., R. 10 W.

PORTION OF N.



*Ave V-8 from E. of
eliminated from
Census map 70*

CSB-2956-2
A2 of A3



N. 1/2 SEC. 19, T. 5 N., R. 10 W.

CSB-2956-2
A3 OF A3

CSB-2956-
A2 OF A3