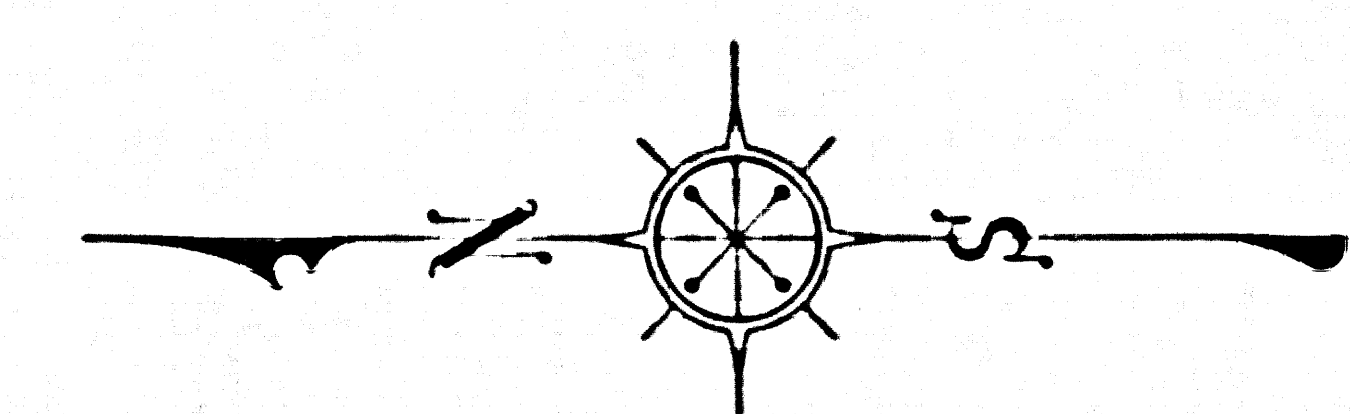
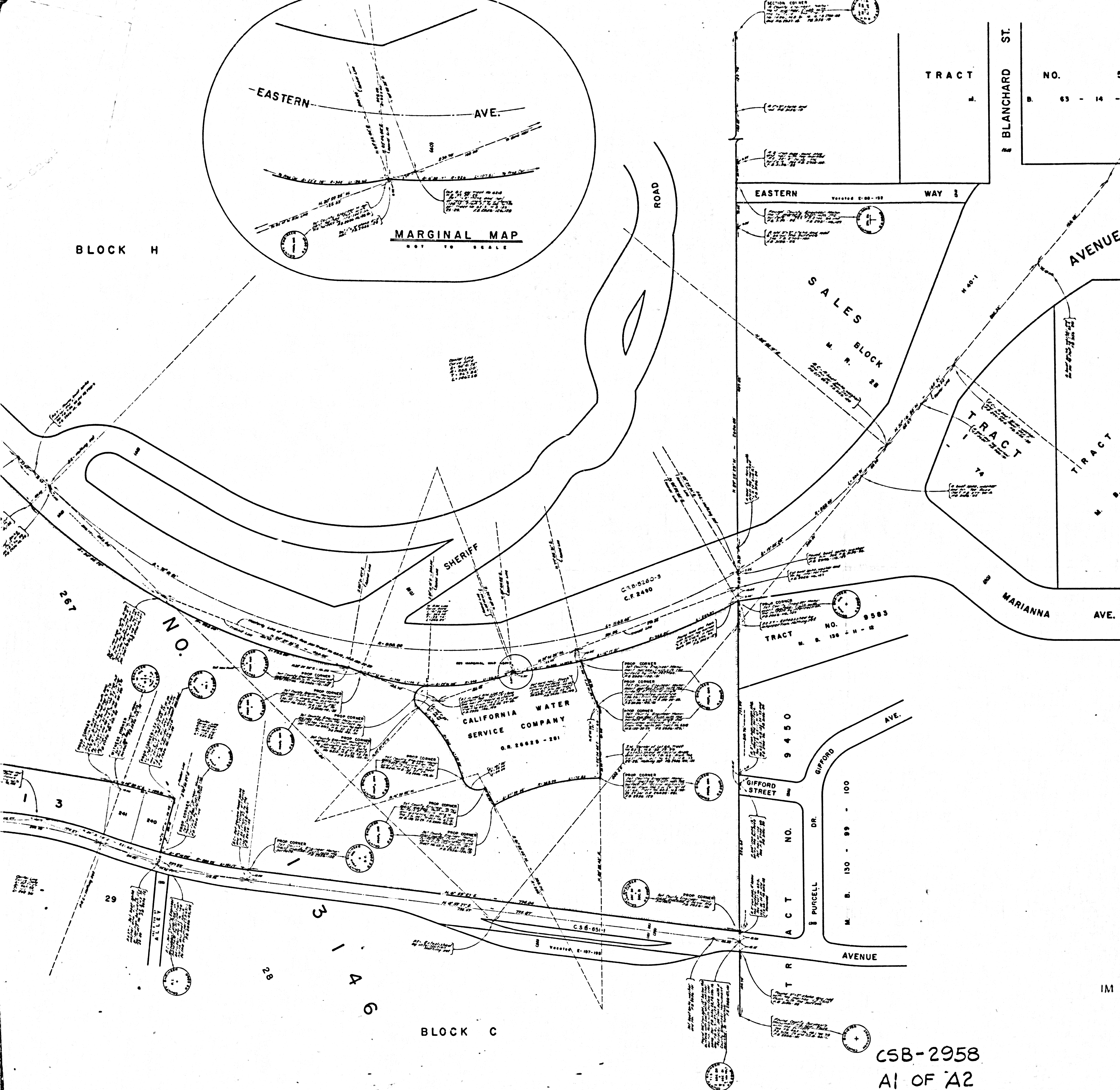


BLOCK H

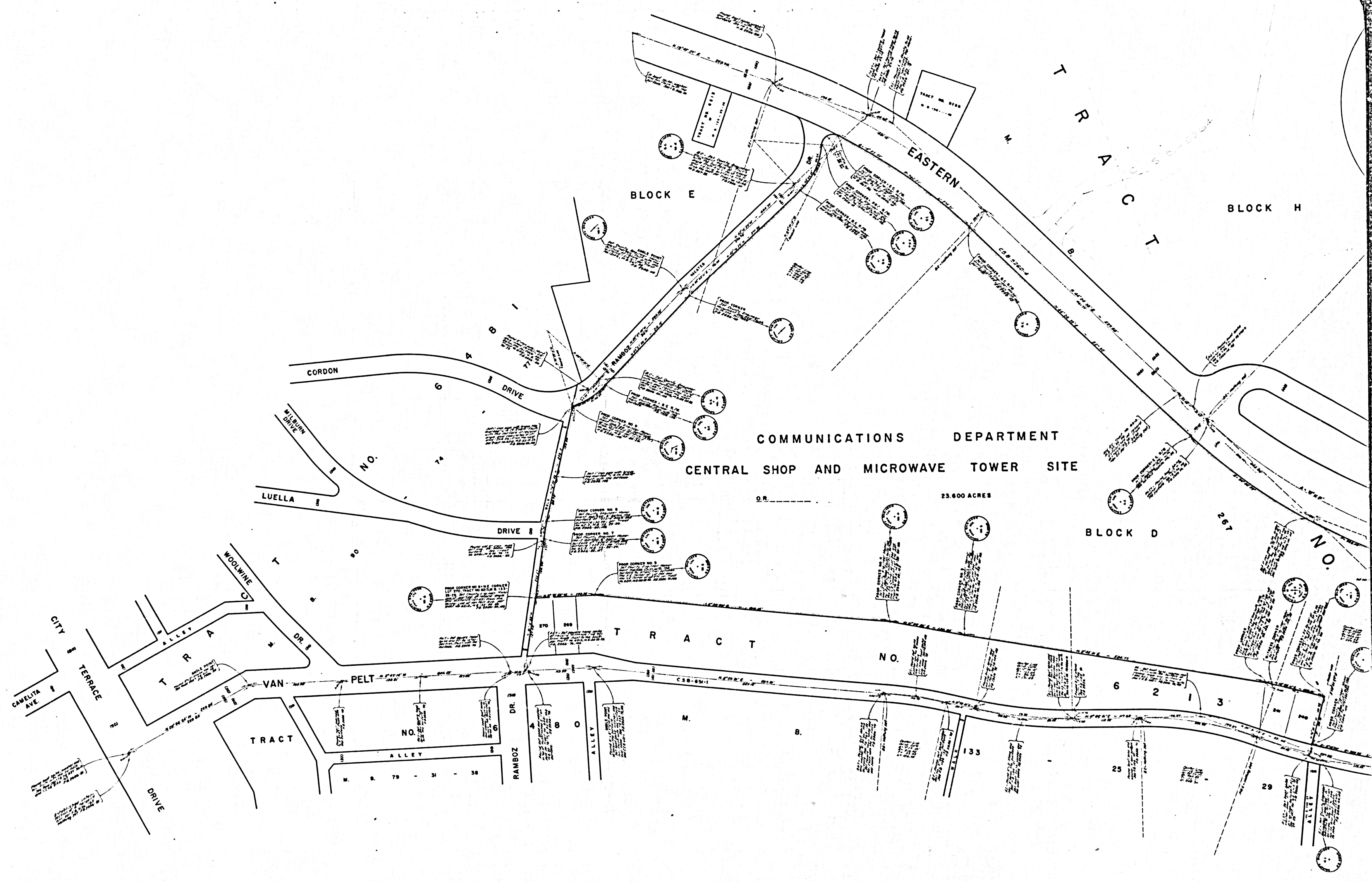


COUNTY OF LOS ANGELES  
MAP OF  
**COMMUNICATION DEPARTMENT  
CENTRAL SHOP AND  
MICROWAVE TOWER SITE**  
BEING A PORTION OF BLOCK D  
TRACT NO. 13146, M. B. 267-28  
COUNTY SURVEYOR'S MAP NO. B-2958  
SCALE - 1 INCH = 50 FT.

JOB NUMBER 0090.02  
JOHN A. LAMBIE - COUNTY ENGINEER  
SURVEYED AUGUST, 1964 - JUNE, 1965  
SURVEYED ON REQUEST OF THE COUNTY  
ENGINEER UNDER SEC. 79, ORD. 4099  
BY LETTER DATED MAY 21, 1964.  
BEARINGS ARE BASED ON THE CALIFORNIA  
COORDINATE SYSTEM ZONE 7 PER SEC. 8809  
PUBLIC RESOURCES CODE. SEE C.S. 9423  
F. B. 2956-65-131  
FIELD WORK BY..... J. P. MENNE  
H. H. SPRIGGS  
OFFICE WORK BY..... D. D. BAILEY  
CHECKED BY..... M. OSHITA

IM 36

NOTE -  
FOR TOPOGRAPHY PRIOR TO CONSTRUCTION  
SEE SURVEY DIVISION FILE MAP NO. PT. F-108-A



CSB-2958  
 A2 OF A2