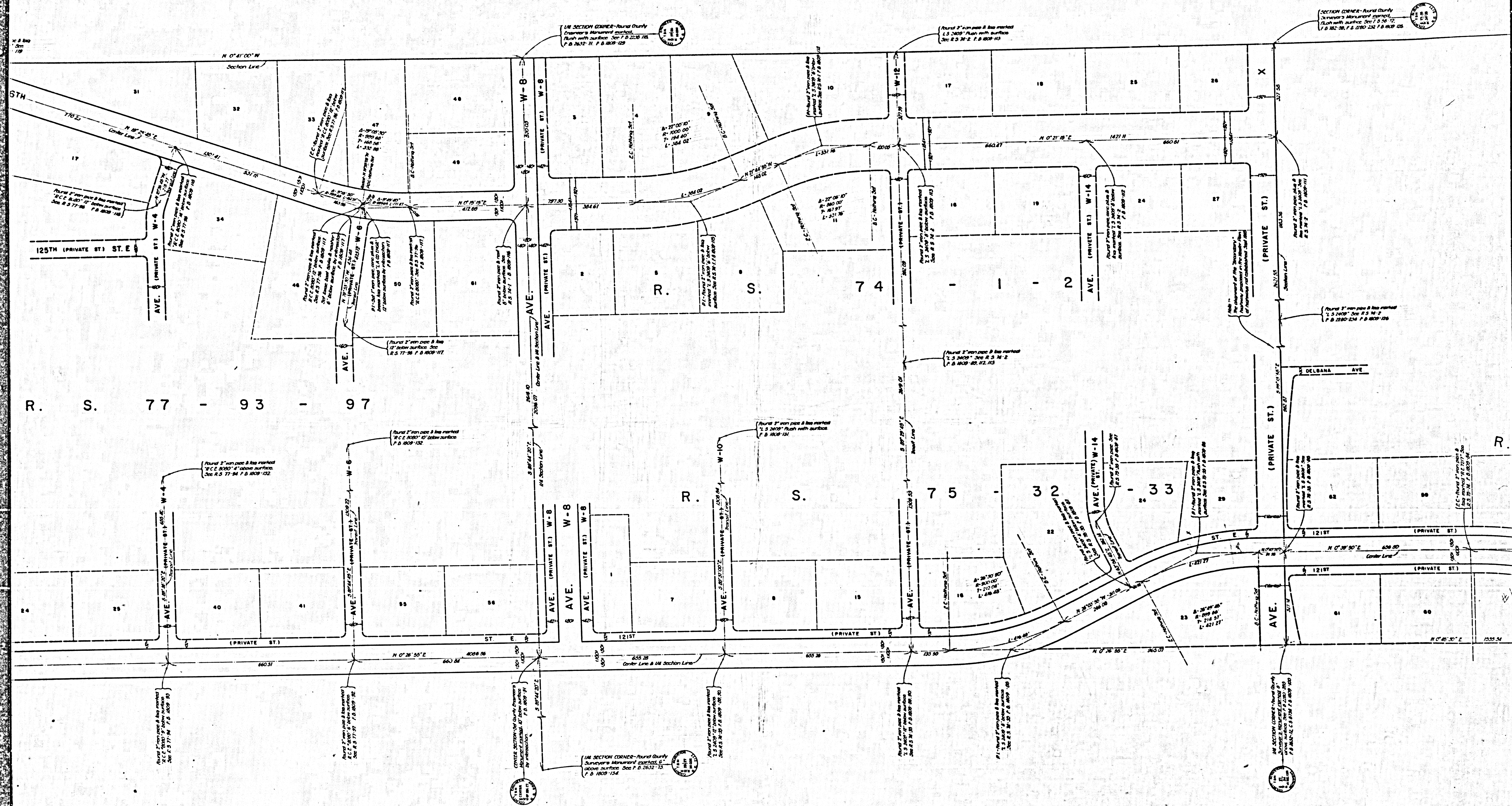


COUNTY OF LOS ANGELES
 MAP OF
121ST STREET EAST
126TH STREET EAST
 FROM
 FORT TEJON RD.
 TO
 PEARBLOSSOM HWY.
 COUNTY SURVEYOR'S MAP NO. B-2960
 SCALE:- 1 INCH = 100 FT.

JOB NUMBER C096.14
 JOHN A. LAMBIE - COUNTY ENGINEER
 SURVEYED OCT. 1964 - JAN. 1965
 SURVEYED ON REQUEST OF THE REGIONAL
 PLANNING COMMISSION UNDER SEC. 78,
 ORD. 4099, BY LETTER DATED MAR. 14, 1964
 AND BY BOARD ORDER DATED DEC. 11, 1951.
 BEARINGS ARE BASED ON THE BEARING OF
 THE CENTER LINE OF FORT TEJON RD. PER
 C.S.B.-1571-4.
 F. B. 1809-81-137
 FIELD WORK BY..... J.C. PIERCE
 OFFICE WORK BY..... M. HAMASU
 CHECKED BY..... W.J. BRENNER

CSB-2960
 A1 OF A3

IM 66



1/4 SECTION CORNER - Round Quarry
 Surveyor's Monument marked,
 flush with surface. Sec P. D. 2235 7/5
 P. D. 2652 - N. P. D. 1809 - 128

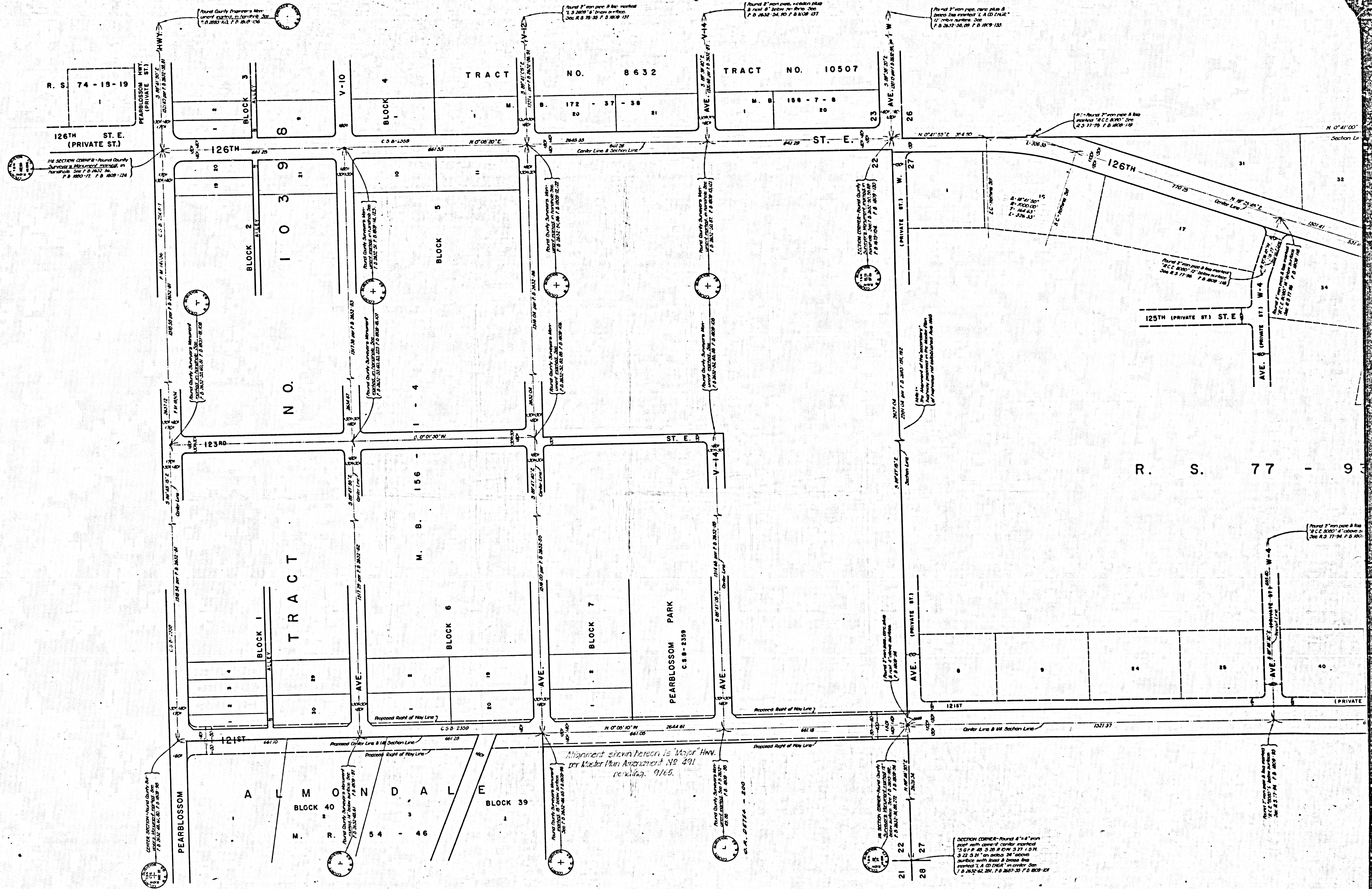
Round 2" iron pipe & has marked
 1.5 2400" flush with surface
 Sec R. S. 74-2 P. D. 1809 - 113

SECTION CORNER - Round Quarry
 Surveyor's Monument marked,
 flush with surface. Sec P. D. 2235 7/5
 P. D. 2652 - N. P. D. 2180 - 124 P. D. 1809 - 128

1/4 SECTION CORNER - Round Quarry
 Surveyor's Monument marked,
 above surface. Sec P. D. 2632 - 73
 P. D. 1809 - 134

1/4 SECTION CORNER - Round Quarry
 Surveyor's Monument marked,
 above surface. Sec P. D. 2632 - 73
 P. D. 1809 - 134

CSB-2960
 A2 OF A3



R. S. 74 - 18 - 19
PEARLBLOSSOM HWY.
(PRIVATE ST.)
126TH ST. E.
(PRIVATE ST.)

Alignment shown herein is Major Hwy.
per Master Plan Amendment No. 491
pending 9/65.

CSB-2960
A3 OF A3

R. S. 77 - 9

SECTION CORNER - Round 8" x 8" iron
post with center of corner marked
"C.C. 8000" 4" cap on top
5' 22 3/4" on sides 24" above
surface with least 8" above line
marked "L.A. CD ENGR." in center. See
P.B. 2632-62, 261, P.B. 2627-33 P.B. 2629-101

Round 2" iron pipe & cap
marked "C.C. 8000" 4" cap on top
See R.S. 77-24 P.B. 2629-101

Round 2" iron pipe & cap
marked "C.C. 8000" 4" cap on top
See R.S. 77-24 P.B. 2629-101

SECTION CORNER - Round 8" x 8" iron
post with center of corner marked
"C.C. 8000" 4" cap on top
See R.S. 77-24 P.B. 2629-101

SECTION CORNER - Round 8" x 8" iron
post with center of corner marked
"C.C. 8000" 4" cap on top
See R.S. 77-24 P.B. 2629-101

SECTION CORNER - Round 8" x 8" iron
post with center of corner marked
"C.C. 8000" 4" cap on top
See R.S. 77-24 P.B. 2629-101

SECTION CORNER - Round 8" x 8" iron
post with center of corner marked
"C.C. 8000" 4" cap on top
See R.S. 77-24 P.B. 2629-101

SECTION CORNER - Round 8" x 8" iron
post with center of corner marked
"C.C. 8000" 4" cap on top
See R.S. 77-24 P.B. 2629-101

SECTION CORNER - Round 8" x 8" iron
post with center of corner marked
"C.C. 8000" 4" cap on top
See R.S. 77-24 P.B. 2629-101