

COUNTY OF LOS ANGELES
 MAP OF
AVENUE E
AVENUE F
 FROM
 SIERRA HIGHWAY
 TO
30TH STREET WEST
 COUNTY SURVEYOR'S MAP NO. B-2963

SCALE - 1 INCH = 100 FT.

JOB NUMBER 0096.36

JOHN A. LAMBIE - COUNTY ENGINEER
 SURVEYED JAN - APRIL, 1965

SURVEYED ON REQUEST OF THE REGIONAL
 PLANNING COMMISSION UNDER SEC. 79,
 ORD. 4099, BY LETTER DATED SEPT. 15, 1965
 AND BY BOARD ORDER DATED DEC. 11, 1965

BEARINGS ARE BASED ON THE BEARING OF
 30TH STREET WEST AS SHOWN ON C.S.B-297-8

EB 3176, FB 3235

FIELD WORK BY..... J. C. PIERCE
 OFFICE WORK BY..... J. J. EDWARDS
 CHECKED BY..... M. E. AUSTIN
 G. E. BARR

Alignment of Avenue E at Sierra Hwy. revised March
 1965 by S.M.P.D. See S.C. Minutes February 22, 1965

1M 71

CSB-2963
 A1 OF A4

CORNER YTHU002

CSB-8 ON 91M 2 PROVEYRUB YTHU002

SECTION 29

T. 8 N., R. 12 W.
S. B. M.

FREWAY

VALLEY

ANTELOPE

CSB - 2963
A3 OF A4

SECTION CORNER
T. 8 N. R. 12 W. S. B. M.
E. 1/4 SEC. 29
N. 89° 29' 30"E
2673.22

SECTION CORNER
T. 8 N. R. 12 W. S. B. M.
E. 1/4 SEC. 30
N. 89° 29' 30"E
2677.16

SECTION CORNER
T. 8 N. R. 12 W. S. B. M.
E. 1/4 SEC. 30
N. 89° 29' 30"E
2677.16

SECTION CORNER
T. 8 N. R. 12 W. S. B. M.
E. 1/4 SEC. 29
N. 89° 29' 30"E
2668.49

25th PRIVATE STREET SE WEST

25th PRIVATE STREET ST. WEST

WEST

ST

20th PRIVATE

30

73

AVE. PRIVATE STREET E-8

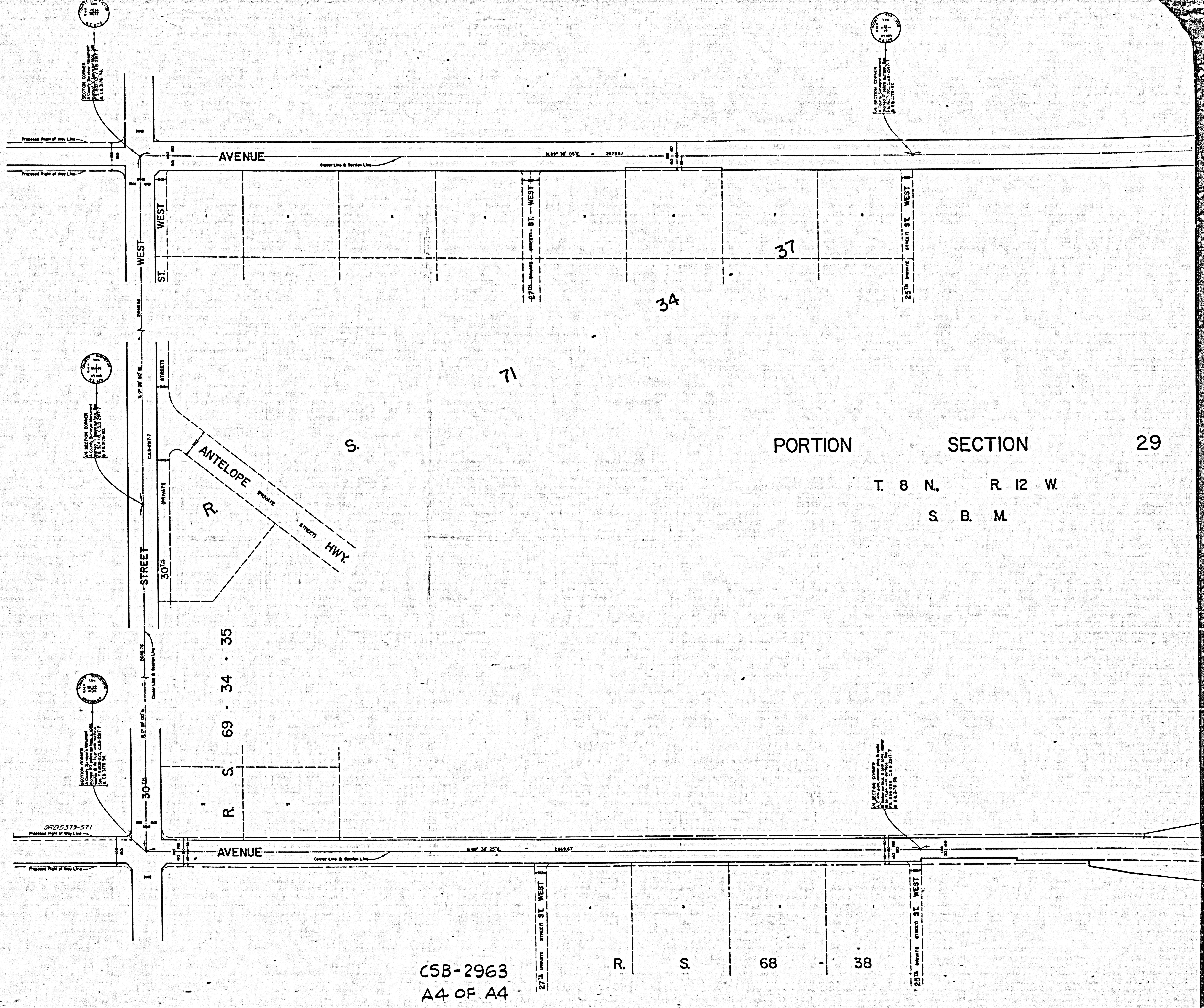
N. 89° 29' 30"E - 2673.22

N. 89° 29' 30"E - 2677.16

N. 89° 29' 30"E - 2668.49

N. 89° 29' 30"E - 2677.16

38



PORTION SECTION 29
 T. 8 N. R. 12 W.
 S. B. M.

CSB-2963
 A4 OF A4