

COUNTY OF LOS ANGELES
 MAP OF
SIERRA HIGHWAY
 FROM
 AVENUE F
 TO
 AVENUE A
 COUNTY SURVEYOR'S MAP NO. B-2966
 SHEET NO. 2 OF 2 SHEETS
 SCALE:- 1 INCH = 100 FT.

JOB NUMBER 0075.17
 JOHN A. LAMBIE - COUNTY ENGINEER
 SURVEYED JAN - APRIL, 1965
 SURVEYED ON REQUEST OF THE REGIONAL
 PLANNING COMMISSION UNDER SEC. 79,
 ORG. 4099, BY LETTER DATED JAN. 9, 1955
 AND BY BOARD ORDER DATED DEC. 11, 1951
 BEARINGS ARE BASED ON THE BEARING OF
 30th STREET WEST AS SHOWN ON C.S.B-2917-B

FB 3235
 FIELD WORK BY..... J. C. PIERCE
 OFFICE WORK BY..... J. J. EDWARDS
 CHECKED BY..... S. H. MILLER
 E. E. BARR

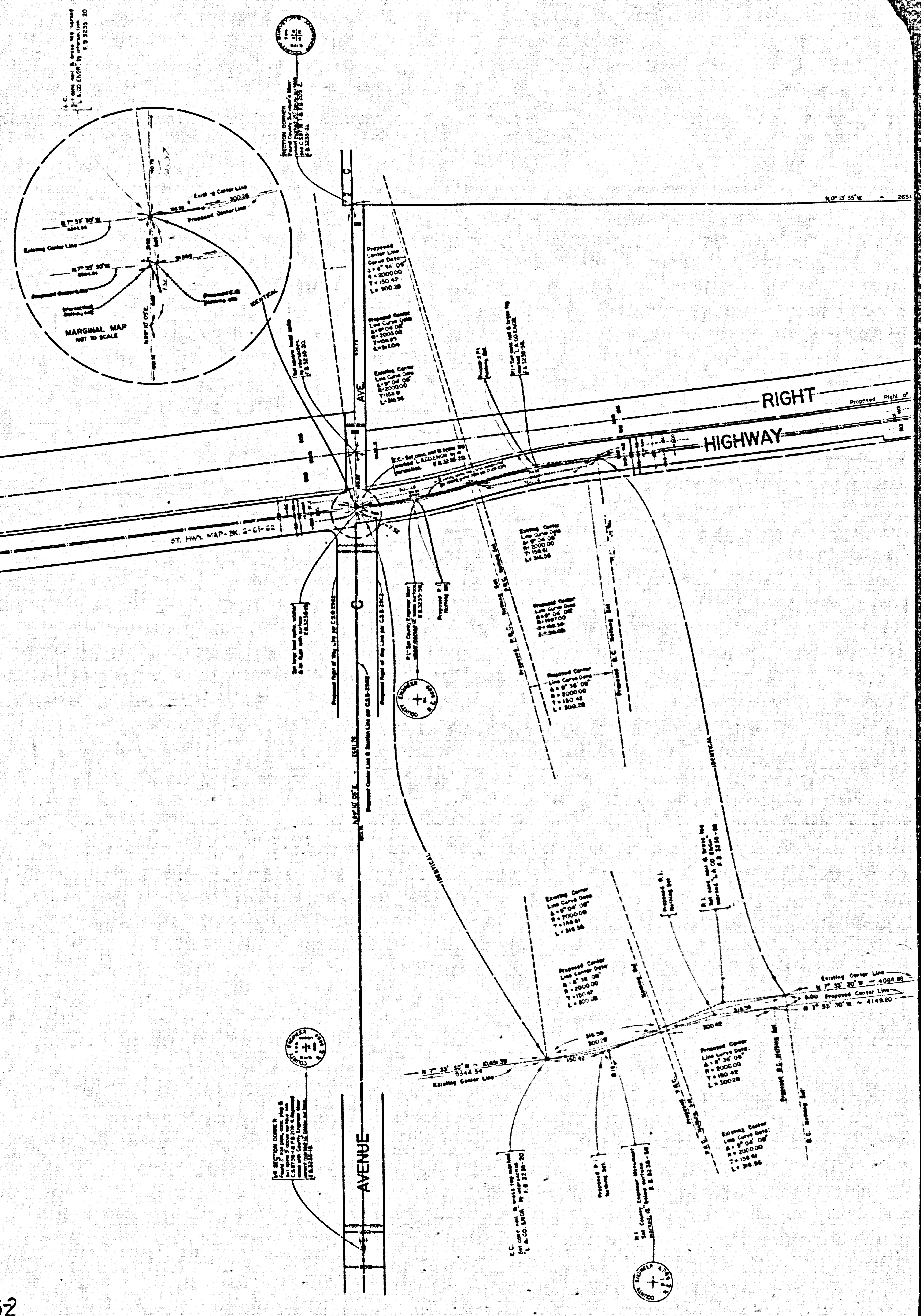
Alignment revised per L.C.C. No. 12-18-66 by S.R. May, 1966.

MARGINAL MAP SHOWING ESTABLISHED ALIGNMENT
 BY COUNTY ENGINEER - MAY, 1969
 NOT TO SCALE

CSB-29662
 A1 OF A4

SECTION 9

T. 8 N. R. 12 W.
S. B. M.



CSB-29662
A2 of A4

SECTION

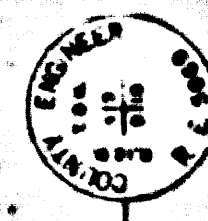
4

PORTION OF SECTION

T. 8 N. R. 12 W.
S. B. M.

12 W.

AVENUE



SECTION CORNER
S. 1/4 Sec. 4, T. 8 N., R. 12 W.
E. 1/4 Sec. 4, T. 8 N., R. 12 W.
N. 1/4 Sec. 4, T. 8 N., R. 12 W.
S. 1/4 Sec. 4, T. 8 N., R. 12 W.

See notes for details in case
of a change in the location
of the center line.

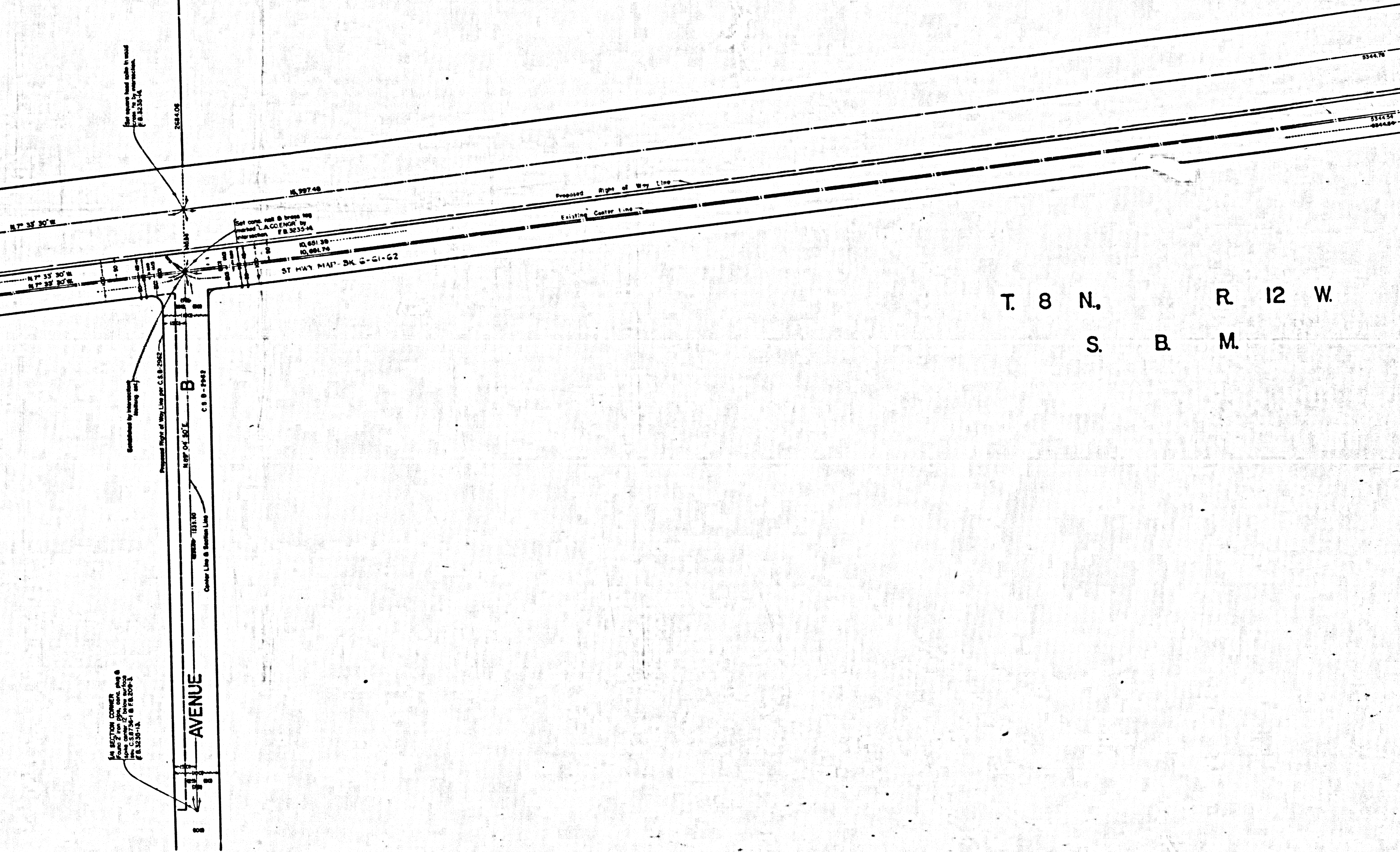
Center Line of the Line as C.S.B. 2966-2

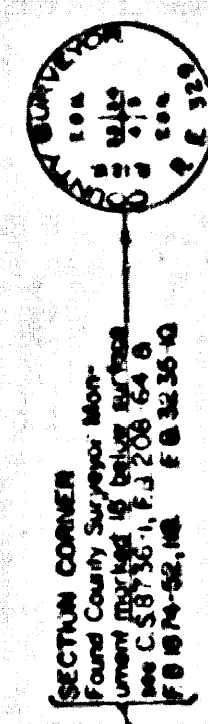
SECTION CORNER
S. 1/4 Sec. 4, T. 8 N., R. 12 W.
E. 1/4 Sec. 4, T. 8 N., R. 12 W.
N. 1/4 Sec. 4, T. 8 N., R. 12 W.
S. 1/4 Sec. 4, T. 8 N., R. 12 W.

See notes for details in case
of a change in the location
of the center line.

C.S.B. 2966-2

CSB-2966-2
A3 of A4





KERN COUNTY
LOS ANGELES COUNTY

T. 9 N.

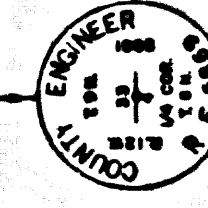
T. 8 N.

PORTION OF SECTION 4

Found nail in railroad
in F.B. 3235-9
Established by intersection
bearing set
Set large iron spike in
in F.B. 3235-9
Set square iron spike in
in F.B. 3235-9

AVE. B
Proposed Right of Way Line
Center Line
Proposed Right of Way Line

SECTION CORNER
Found County Survey Monument
at 50' below surface see
C.S. 9734-1. Set County Engineer
Monument over same 10/22/20
in hole. F.B. 3235-9



Center line of rail reported as
the center line of right of way

Center line of Sierra Highway established
control with 140000 from the center
line of the Southern Pacific Railroad right
of way per C.S. 2285, 09-290 & D-45 no.

ST. HWY 1417. RN. G-61. C-2

SOUTHERN

SIERRA

PACIFIC

RAILROAD

T. 8 N. R. 12 W.

S. B. M.

CSB-2966-2
A4 OF A4