

ESTABLISHED

BY

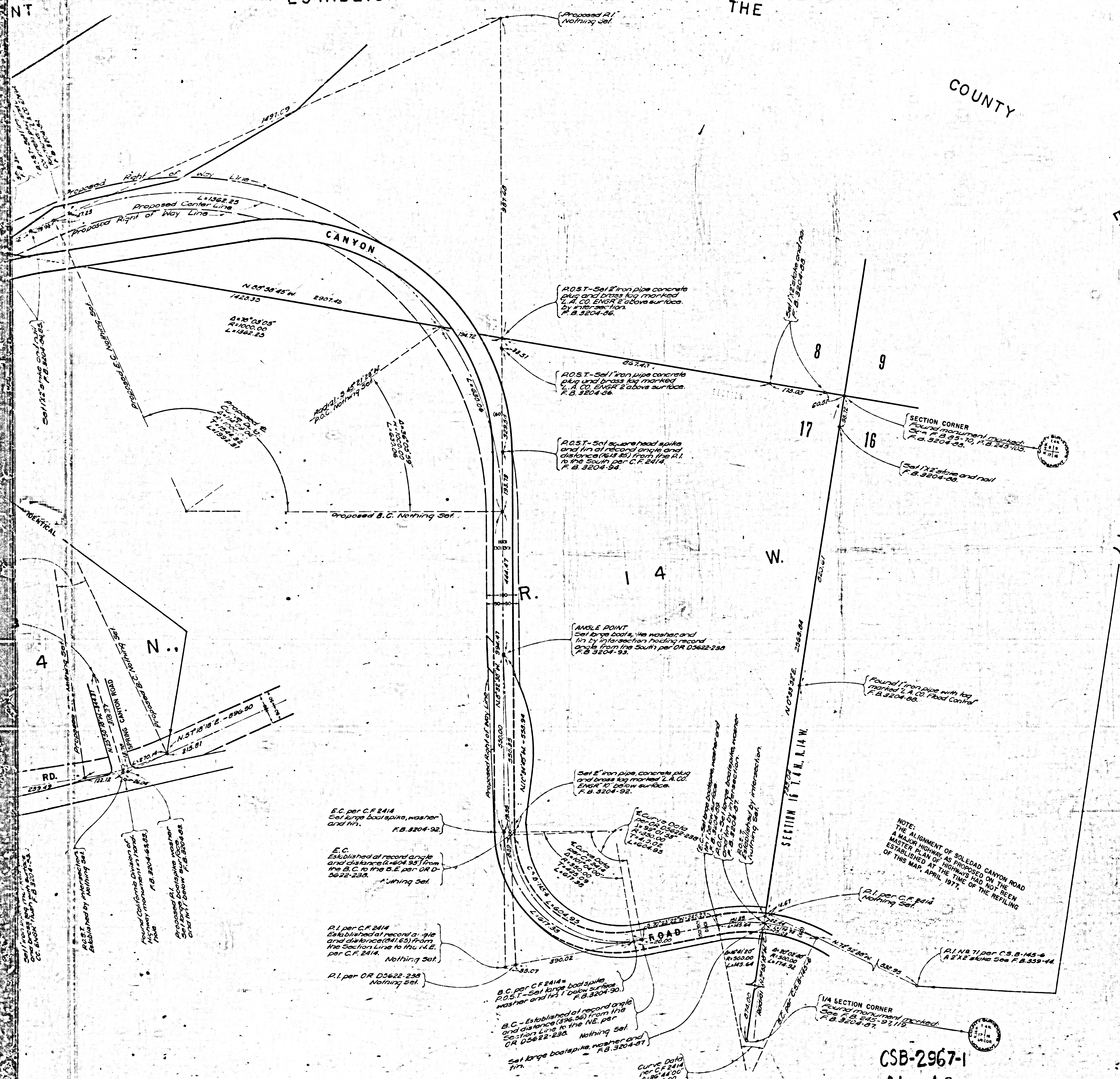
THE

COUNTY

ENGINEER

MARCH

1977



COUNTY OF LOS ANGELES
 MAP OF
SOLEDAD CANYON ROAD
 FROM
 THE EAST LINE OF SEC. 17, T. 4 N., R. 14 W.
 TO
 THE EAST LINE OF SEC. 21, T. 4 N., R. 15 W.

COUNTY SURVEYORS MAP NO. B-2967
 SHEET NO. 1 OF 3 SHEETS
 SCALE -- 1 INCH = 100 FT.

JOB NUMBER 0075.92

JOHN A. LAMBIE - COUNTY ENGINEER
 SURVEYED FEBRUARY-APRIL, 1965
 AND AUGUST, 1965

SURVEYED ON REQUEST OF THE REGIONAL
 PLANNING COMMISSION UNDER SEC. 79, ORD. 4099,
 BY LETTERS DATED AUG. 25, 1964 & JULY 12, 1965
 AND BY BOARD ORDER DATED DEC. 11, 1951

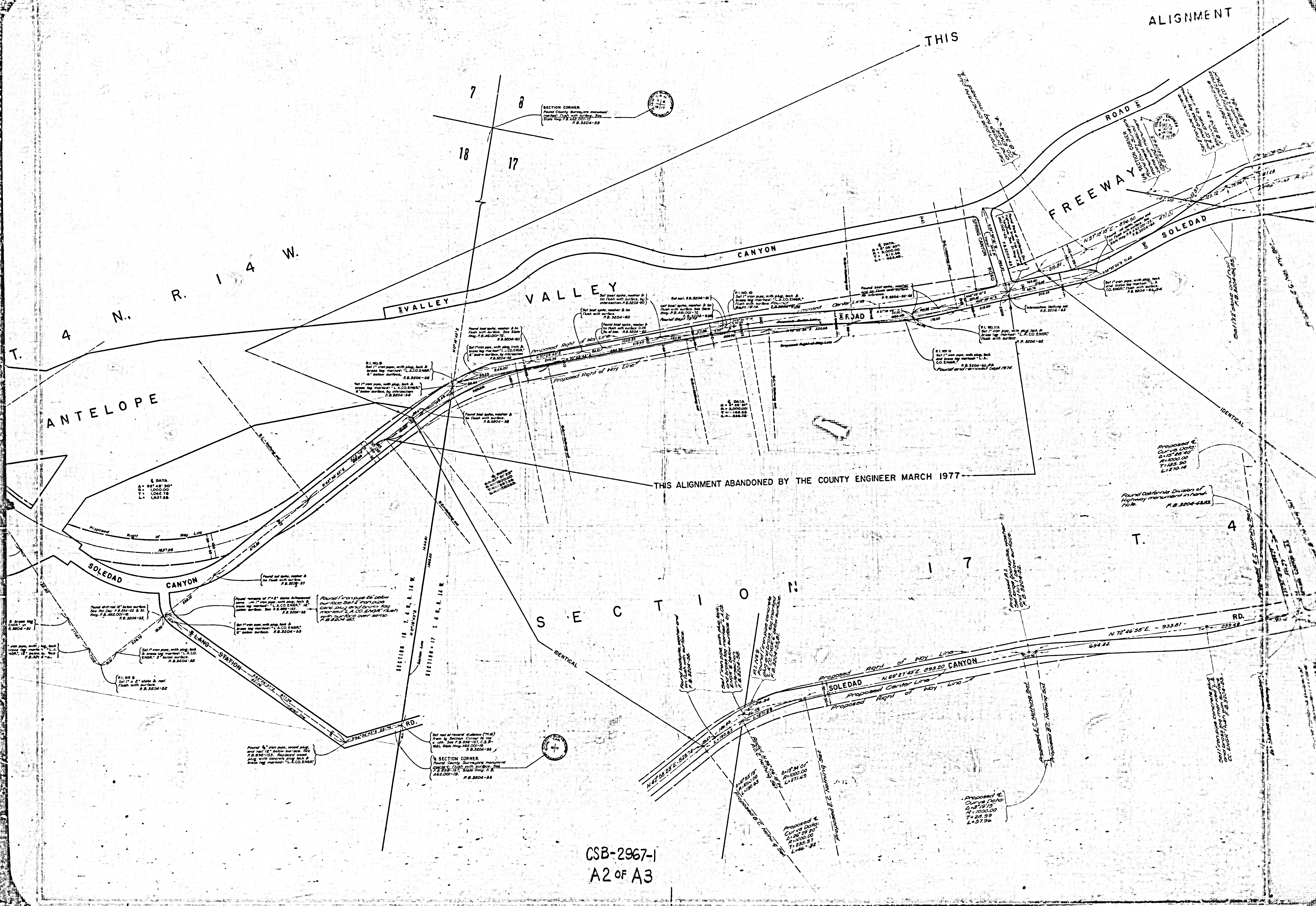
BEARINGS ARE BASED ON THE CALIFORNIA
 COORDINATE SYSTEM ZONE 7 PER SEC. 8809
 PUBLIC RESOURCES CODE. SEE C.S. 9423

F. B. 3204 - 5 - 78

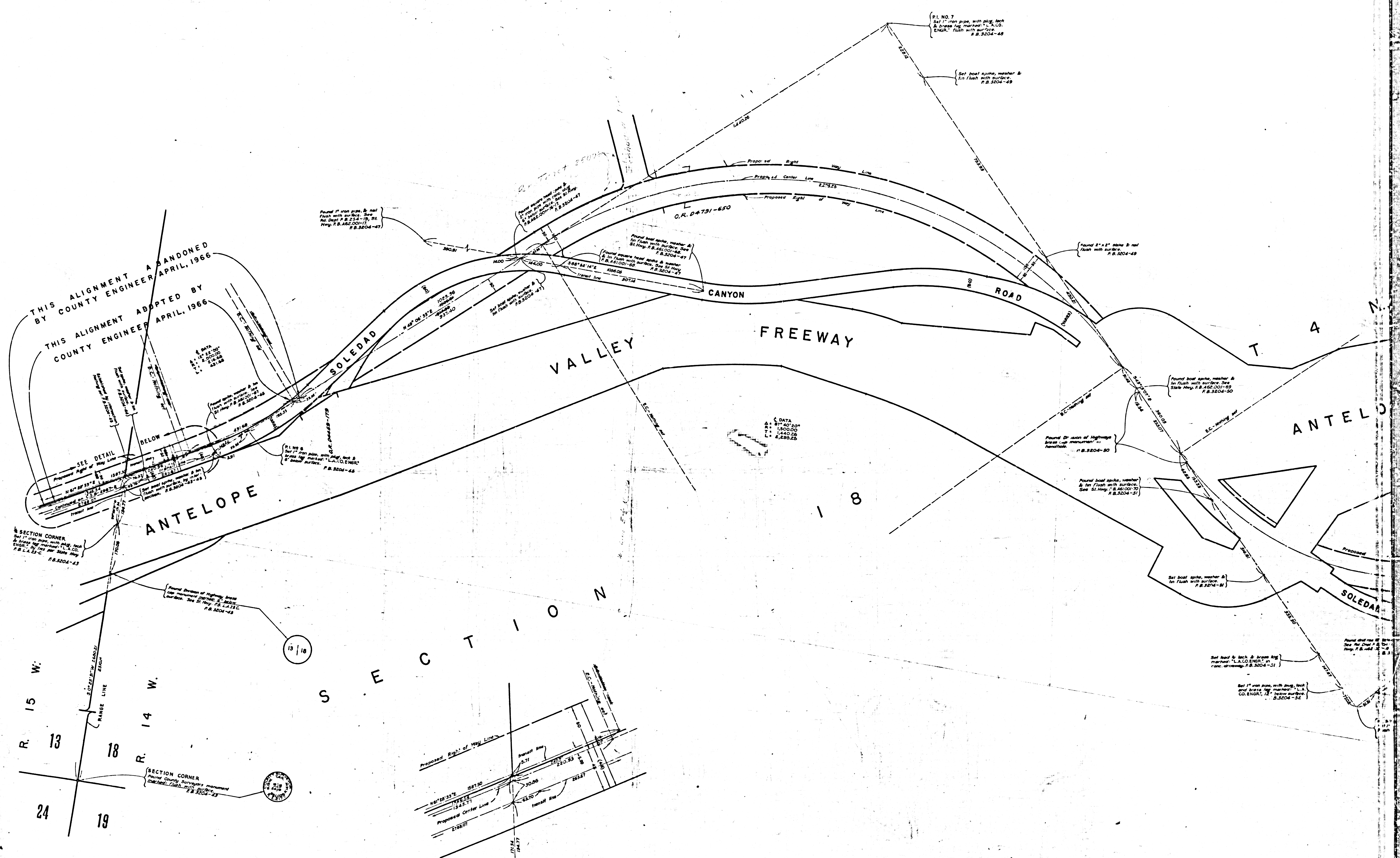
FIELD WORK BY..... W. J. VOGE
 OFFICE WORK BY..... G. H. BOYER
 CHECKED BY..... W. J. BRENNER

Revised center line alignment from R.I. No. 3 to R.I. No. 2, See L.E.C. minutes Mar. 10, 1966, G.H.B. Agreement between R.I. No. 3 and R.I. No. 2, minutes dated June 15, 1971, Dec. 28, 1975 and March 4, 1978. March 1977, G.G.

CSB-2967-1
 A1 of A-3



CSB-2967-1
A2 OF A3



THIS ALIGNMENT ABANDONED
BY COUNTY ENGINEER APRIL, 1966

THIS ALIGNMENT ADOPTED BY
COUNTY ENGINEER APRIL, 1966

SECTION CORNER
Set 1" iron pipe, with plug, back
to base of monument, L.A. CO.
ENGR. 7" x 8" x 12" x 12" x 12"
F.B. 3204-43

ANTELOPE

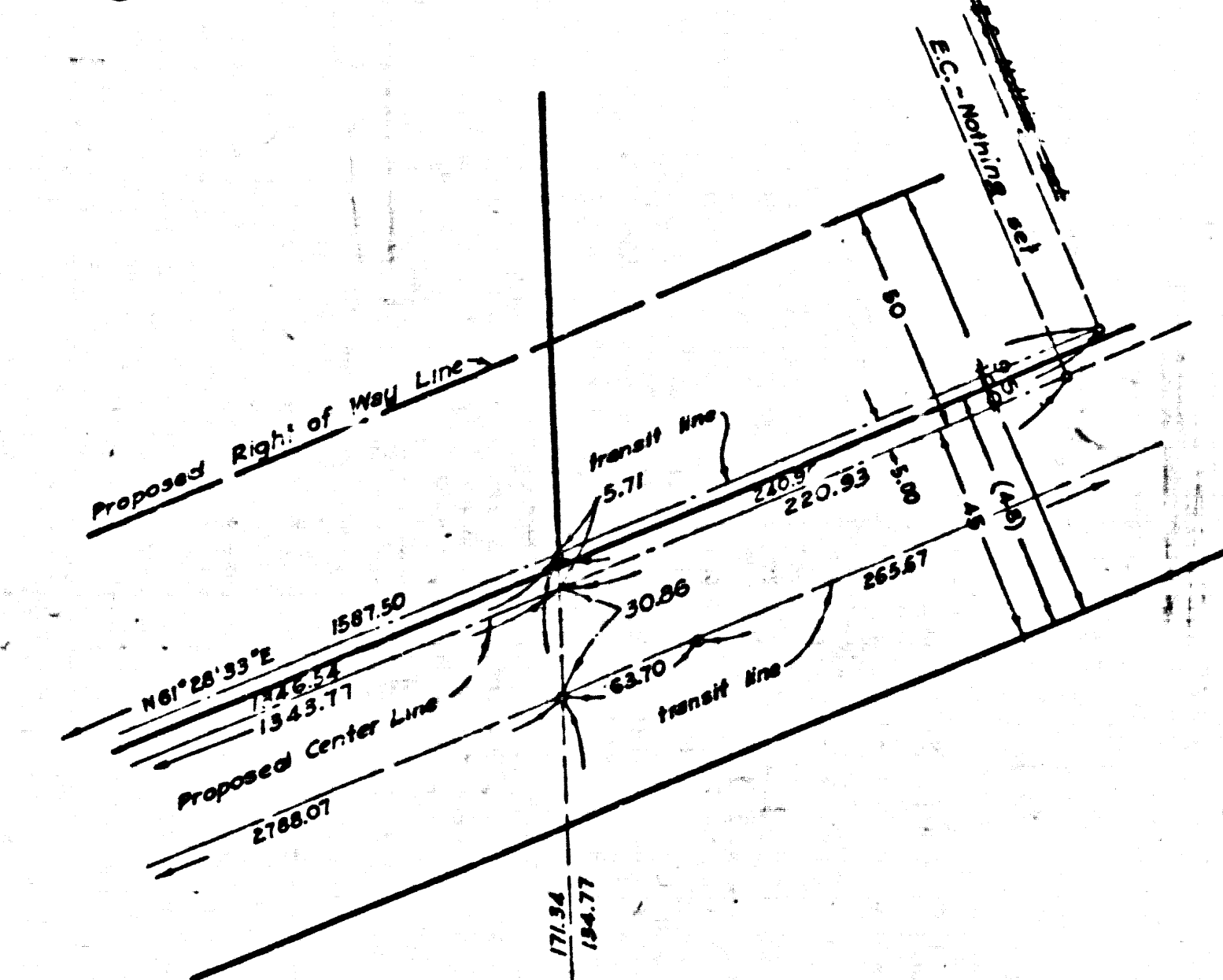
VALLEY FREEWAY

ANTELOPE CANYON ROAD

ANTELOPE

SOLEDAD

S E C T I O N



DETAIL
NOT TO SCALE

CSB-2967-1
A3 of A3

PL. NO. 7
Set 1" iron pipe, with plug, back
& base of monument, L.A. CO.
ENGR. 7" x 8" x 12" x 12" x 12"
F.B. 3204-48

Set bolt spike, washer &
nut flush with surface.
F.B. 3204-49

Found 2" x 2" stone & nail
flush with surface.
F.B. 3204-49

Found bolt spike, washer &
nut flush with surface. See
St. Hwy. F.B. 3204-47

Found 2" x 2" stone & nail
flush with surface. See
St. Hwy. F.B. 3204-47

Found bolt spike, washer &
nut flush with surface. See
St. Hwy. F.B. 3204-47

Found bolt spike, washer &
nut flush with surface. See
St. Hwy. F.B. 3204-47

Found bolt spike, washer &
nut flush with surface. See
St. Hwy. F.B. 3204-47

Found bolt spike, washer &
nut flush with surface. See
St. Hwy. F.B. 3204-47

Found bolt spike, washer &
nut flush with surface. See
St. Hwy. F.B. 3204-47

Found bolt spike, washer &
nut flush with surface. See
St. Hwy. F.B. 3204-47

Found bolt spike, washer &
nut flush with surface. See
St. Hwy. F.B. 3204-47

Found bolt spike, washer &
nut flush with surface. See
St. Hwy. F.B. 3204-47

Found bolt spike, washer &
nut flush with surface. See
St. Hwy. F.B. 3204-47

Found bolt spike, washer &
nut flush with surface. See
St. Hwy. F.B. 3204-47

Found bolt spike, washer &
nut flush with surface. See
St. Hwy. F.B. 3204-47

Found bolt spike, washer &
nut flush with surface. See
St. Hwy. F.B. 3204-47

Found bolt spike, washer &
nut flush with surface. See
St. Hwy. F.B. 3204-47

Found bolt spike, washer &
nut flush with surface. See
St. Hwy. F.B. 3204-47

Found bolt spike, washer &
nut flush with surface. See
St. Hwy. F.B. 3204-47

Found bolt spike, washer &
nut flush with surface. See
St. Hwy. F.B. 3204-47

Found bolt spike, washer &
nut flush with surface. See
St. Hwy. F.B. 3204-47

Found bolt spike, washer &
nut flush with surface. See
St. Hwy. F.B. 3204-47

Found bolt spike, washer &
nut flush with surface. See
St. Hwy. F.B. 3204-47

Found bolt spike, washer &
nut flush with surface. See
St. Hwy. F.B. 3204-47

Found bolt spike, washer &
nut flush with surface. See
St. Hwy. F.B. 3204-47

Found bolt spike, washer &
nut flush with surface. See
St. Hwy. F.B. 3204-47

Found bolt spike, washer &
nut flush with surface. See
St. Hwy. F.B. 3204-47

Found bolt spike, washer &
nut flush with surface. See
St. Hwy. F.B. 3204-47

Found bolt spike, washer &
nut flush with surface. See
St. Hwy. F.B. 3204-47

Found bolt spike, washer &
nut flush with surface. See
St. Hwy. F.B. 3204-47

Found bolt spike, washer &
nut flush with surface. See
St. Hwy. F.B. 3204-47

Found bolt spike, washer &
nut flush with surface. See
St. Hwy. F.B. 3204-47

Found bolt spike, washer &
nut flush with surface. See
St. Hwy. F.B. 3204-47

Found bolt spike, washer &
nut flush with surface. See
St. Hwy. F.B. 3204-47

Found bolt spike, washer &
nut flush with surface. See
St. Hwy. F.B. 3204-47

Found bolt spike, washer &
nut flush with surface. See
St. Hwy. F.B. 3204-47

Found bolt spike, washer &
nut flush with surface. See
St. Hwy. F.B. 3204-47

Found bolt spike, washer &
nut flush with surface. See
St. Hwy. F.B. 3204-47