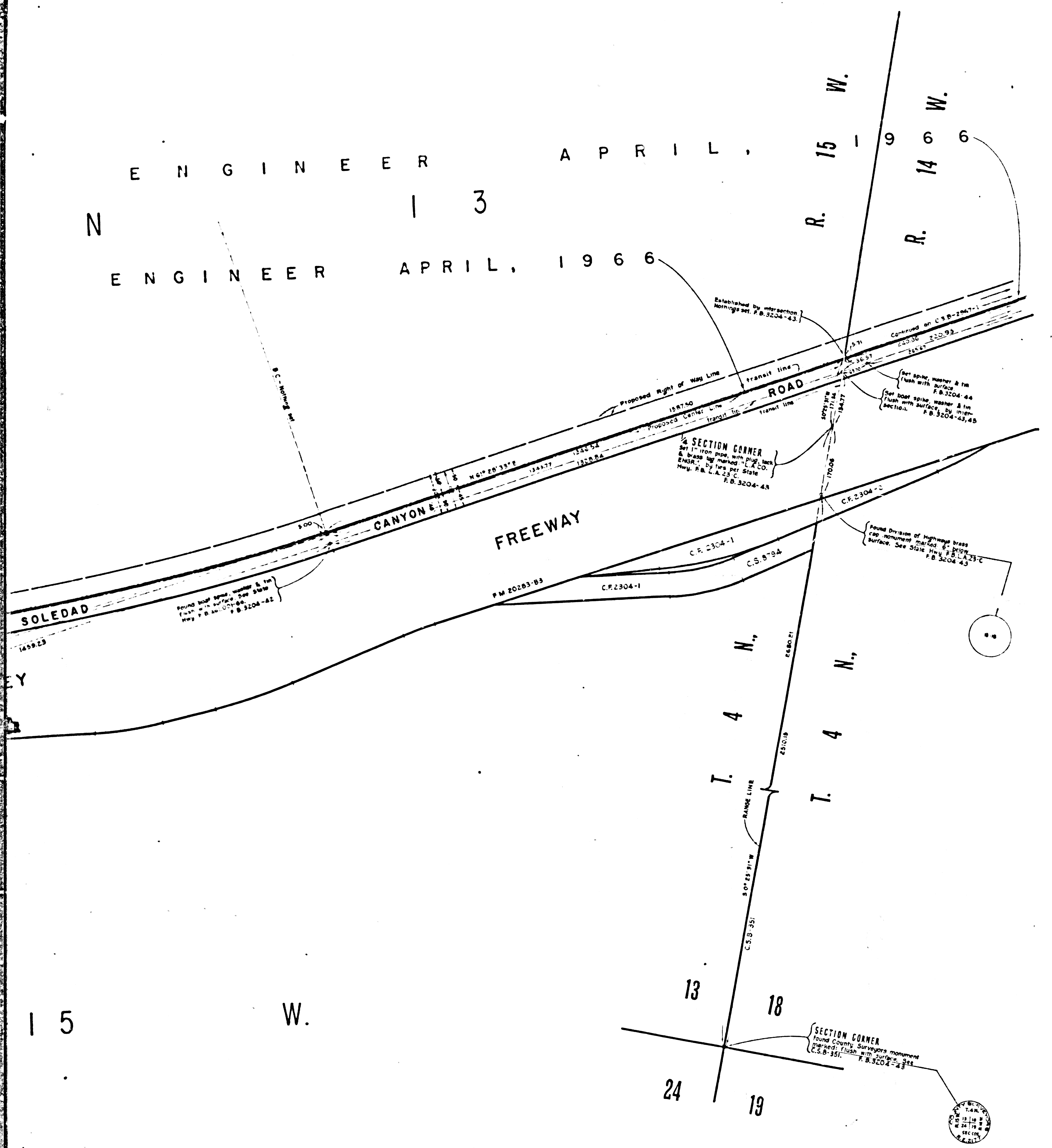


ENGINEER APRIL 13 1966

ENGINEER APRIL 14 1966



COUNTY OF LOS ANGELES
 MAP OF
SOLEDAD CANYON ROAD
 FROM
 THE EAST LINE OF SEC. 17, T. 4 N., R. 14 W.
 TO
 THE EAST LINE OF SEC. 21, T. 4 N., R. 15 W.

COUNTY SURVEYORS MAP NO. B-2967
 SHEET NO. 2 OF 3 SHEETS
 SCALE: 1 INCH = 100 FT.

JOB NUMBER 0075.52

JOHN A. LAMBIE - COUNTY ENGINEER
 SURVEYED FEBRUARY, APRIL, 1965
 AND AUGUST, 1966

SURVEYED ON REQUEST OF THE REGIONAL
 PLANNING COMMISSION UNDER SEC. 79, ORD. 4099,
 BY LETTERS DATED AUG. 25, 1964 & JULY 12, 1965
 AND BY BOARD ORDER DATED DEC. 11, 1961.

BEARINGS ARE BASED ON THE CALIFORNIA
 COORDINATE SYSTEM ZONE 7 PER SEC. 8809
 PUBLIC RESOURCES CODE. SEE C.S. 9423

F. B. 3204-5 - 78

FIELD WORK BY..... W. J. VOGEL
 OFFICE WORK BY..... G. H. BOYER
 CHECKED BY..... W. J. BRENNER

LM 264-157
 LM 264-157

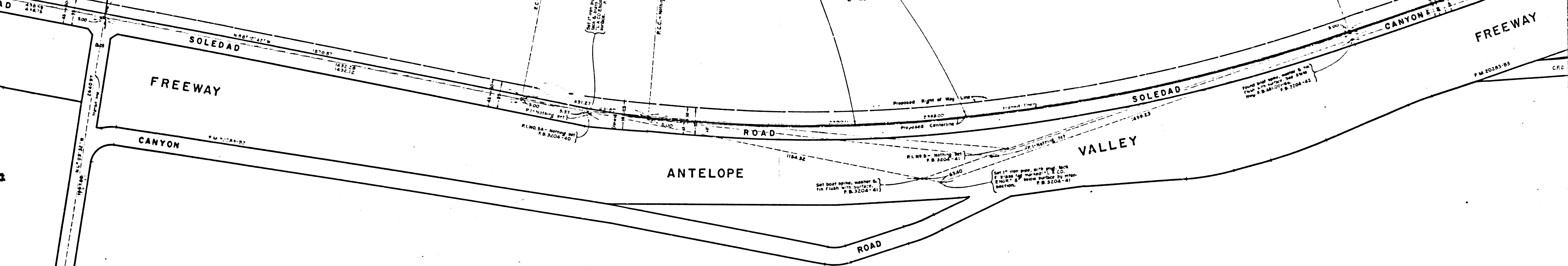
Source: Contouring alignment from P. No. 9, 76
 P. No. 6, S. No. 1, E. C. Prince, Mar. 18, 1964, J. N. A.

CSB-2967-2
 A1 OF A3

SECTION CORNER
Fresno County Surveyors Monument
P.M. 2004-29
P.B. 3204-29

IGNMENT
IS
ALIGNMENT
A B A N D O N E D
A D O P T E D
BY
C O U N T Y
E N G I N E E R
A P
1 3
A P R I L , 1 9 6 6

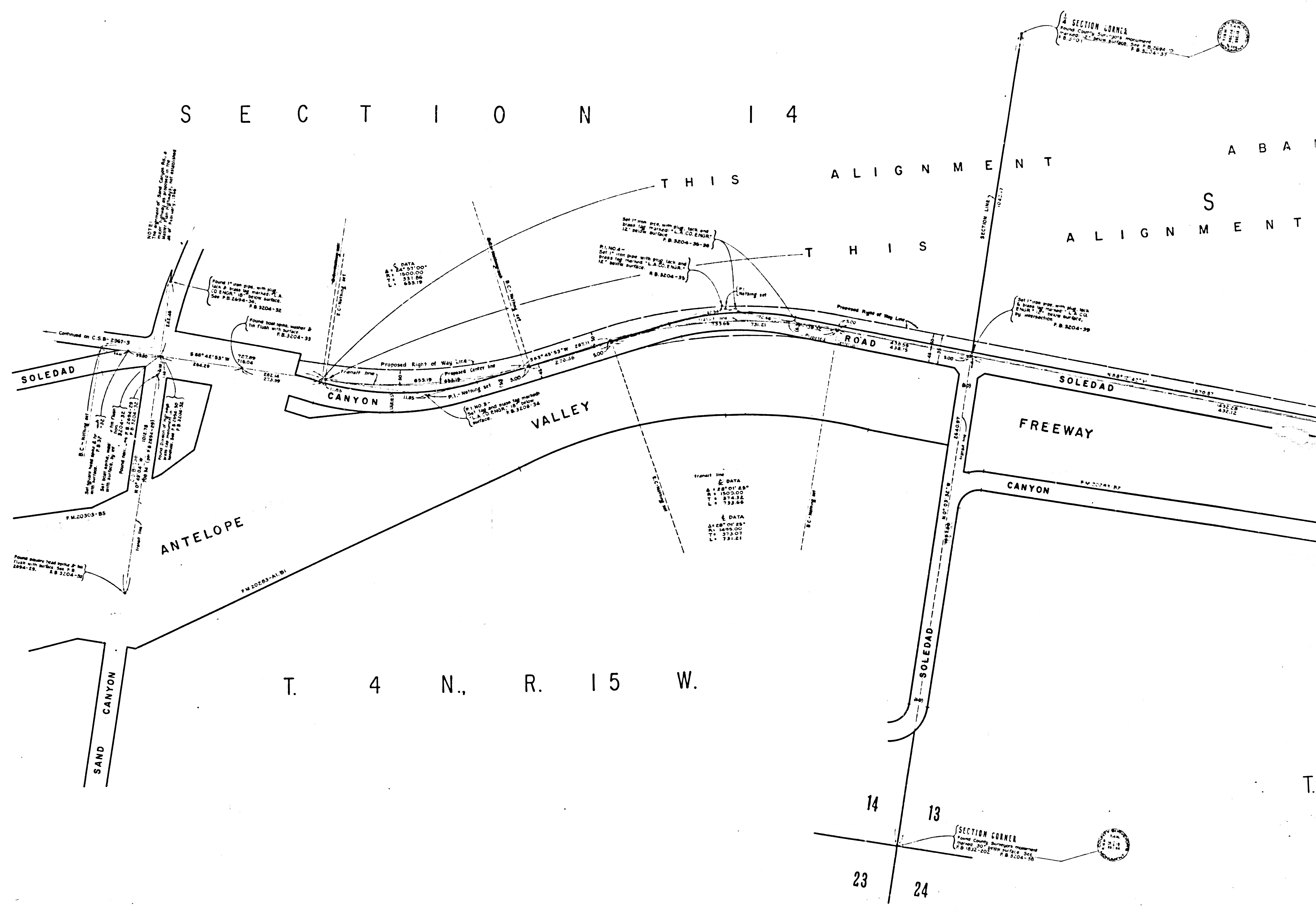
Set 1" iron pipe with plug bolt
& brass cap marked "L.S. CO."
at intersection of center surface
by intersection P.B. 3204-29



14
13
24
T. 4 N., R. 15 W.

CSB-2967-2
A2 of A3

S E C T I O N 1 4



T. 4 N., R. 15 W.

CSB-2967-2
A3 of A3

SHELL MFG. CO.