

COUNTY OF LOS ANGELES  
 MAP OF  
**SOLEDAD CANYON ROAD**  
 FROM  
 THE EAST LINE OF SEC. 17, T. 4 N., R. 14 W.  
 TO  
 THE EAST LINE OF SEC. 21, T. 4 N., R. 15 W.

COUNTY SURVEYORS MAP NO. B-2967  
 SHEET NO. 3 OF 3 SHEETS  
 SCALE: - 1 INCH = 100 FT.

JOB NUMBER 0075.92

JOHN A. LAMBIE - COUNTY ENGINEER  
 SURVEYED FEBRUARY-APRIL, 1965  
 AND AUGUST, 1965

SURVEYED ON REQUEST OF THE REGIONAL  
 PLANNING COMMISSION UNDER SEC. 79, ORD. 4099,  
 BY LETTERS DATED AUG. 25, 1964 & JULY 12, 1965  
 AND BY BOARD ORDER DATED DEC. 11, 1951.

BEARINGS ARE BASED ON THE CALIFORNIA  
 COORDINATE SYSTEM ZONE 7 PER SEC. 8809  
 PUBLIC RESOURCES CODE. SEE C.S. 9423

F. B. 3204 - 5 - 78

FIELD WORK BY..... W. J. VOGEL  
 OFFICE WORK BY..... G. H. BOYER  
 CHECKED BY..... W. J. BRENNER

L.M. 264-137  
 L.M. 264-157

Revised proposed alignment between Soledad Canyon Rd and Soledad Rd  
 See I.E.C. minutes dated September 4, 1978 & December 12, 1978  
 Revised proposed alignment West of Soledad Rd. July 1978. B.G.

CSB-29673  
 A1 OF A3

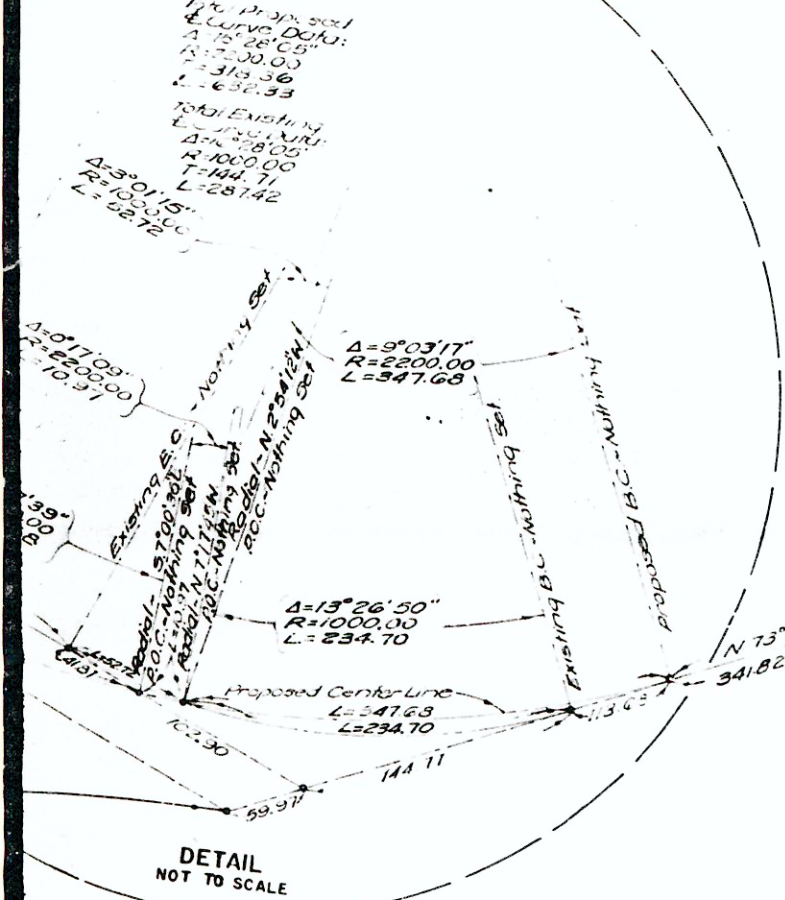


ION

1 5

T. 4 N.

W. R. 1 5 W.



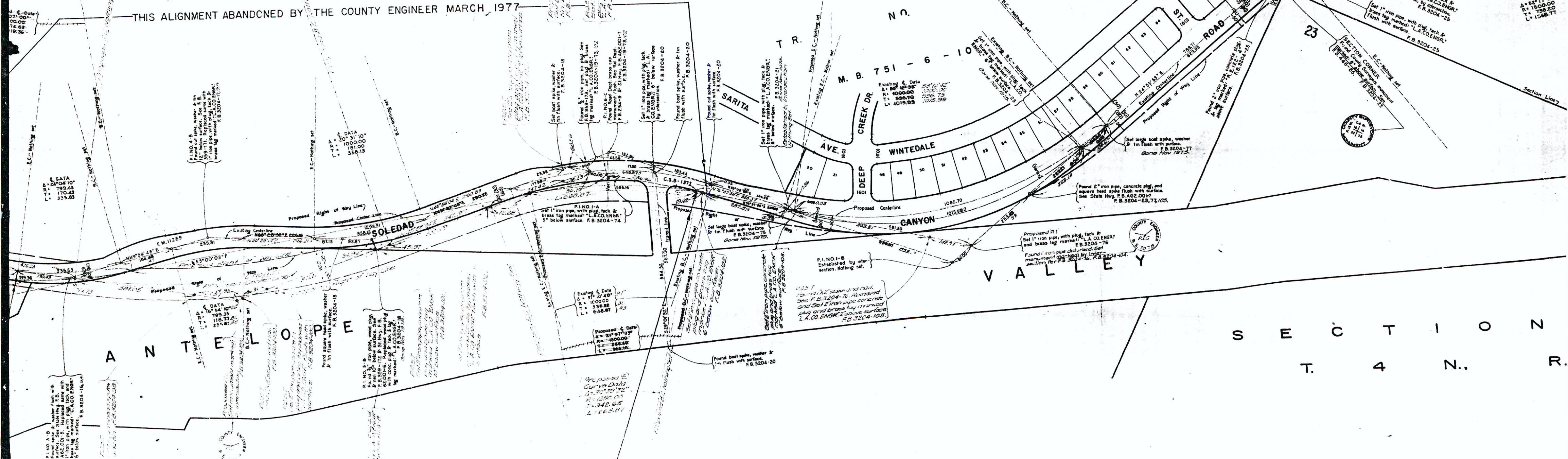
Proposed P.I.  
Set Monument marked  
by intersection F.B. 3204-100  
F.B. 3205-202.

SECTION CORNER  
Found County Survey monument  
Set by L.A. CO. ENGR. F.B. 3204-25

2 2

T. 4 N. R. 1 5 W.

THIS ALIGNMENT ABANDONED BY THE COUNTY ENGINEER MARCH, 1977



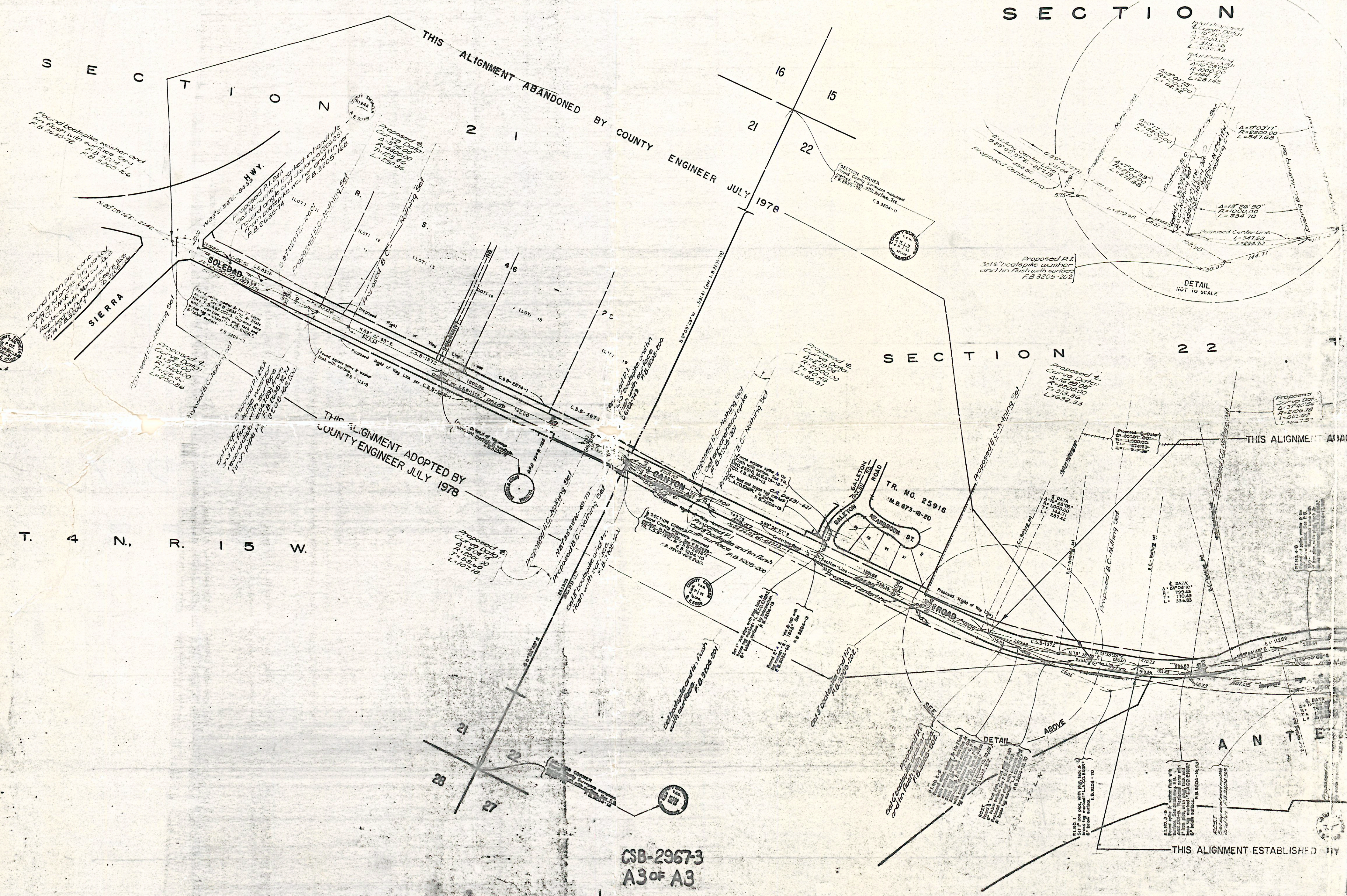
THIS ALIGNMENT ESTABLISHED BY THE COUNTY

ENGINEER MARCH 1977

CSB-29673  
A2 OF A3

SECTION  
T. 4 N. R.





SECTION

SECTION

SECTION 22

T. 4 N. R. 15 W.

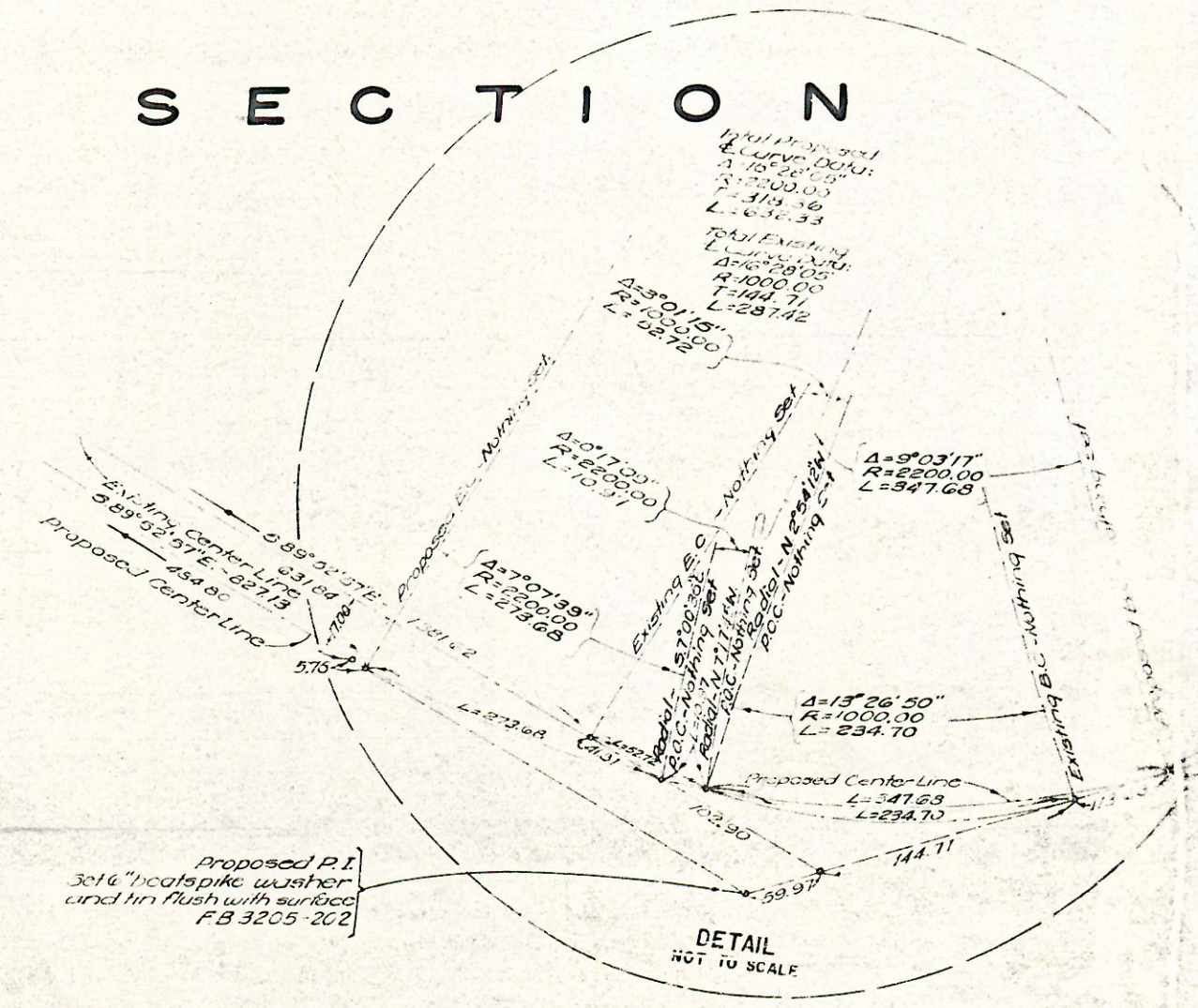
THIS ALIGNMENT ABANDONED BY COUNTY ENGINEER JULY 1978

THIS ALIGNMENT ADOPTED BY COUNTY ENGINEER JULY 1978

THIS ALIGNMENT ADOPTED BY COUNTY ENGINEER JULY 1978

THIS ALIGNMENT ESTABLISHED BY

CSB-29673  
A3 of A3



DETAIL NOT TO SCALE

SECTION 22

Proposed Curve Data:  
A=280.00  
R=100.00  
L=139.36  
L=632.33

Proposed Curve Data:  
A=2106.18  
R=510.59  
L=1411.25

SECTION 22

Proposed Curve Data:  
A=1600.00  
R=100.00  
L=159.71  
L=287.42

DATA  
A=1904.00  
R=100.00  
L=110.43  
L=335.85

DATA  
A=1904.00  
R=100.00  
L=110.43  
L=335.85

DETAIL ABOVE