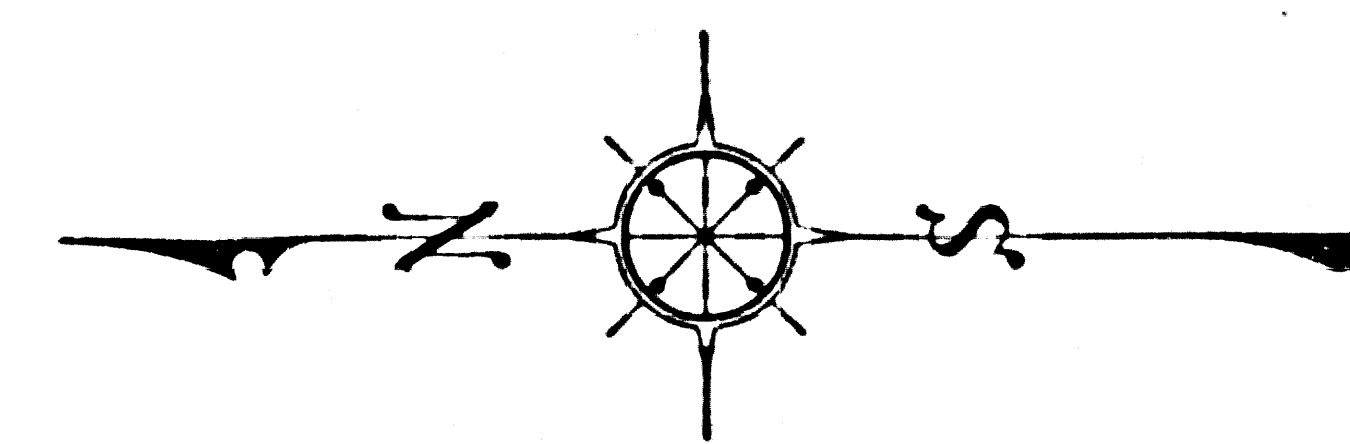
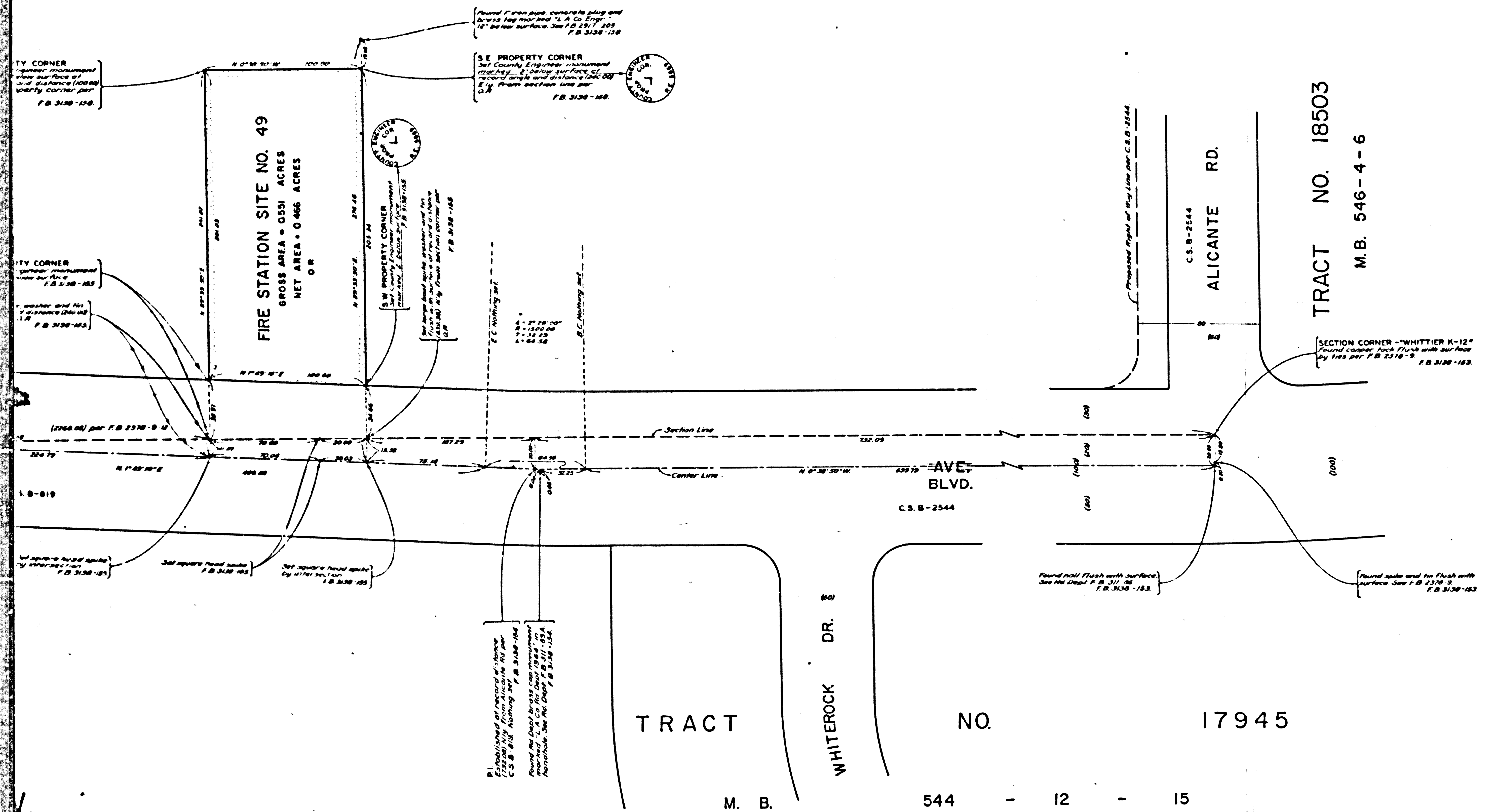


14.

T. 3 S., R. 11 W.



COUNTY OF LOS ANGELES
 MAP OF
**LOS ANGELES COUNTY
 FIRE STATION SITE NO. 49**

LA MIRADA
 BEING A PORTION OF SECTION 14,
 T. 3 S., R. 11 W., S.B.M.
 COUNTY SURVEYORS MAP NO. B-2968
 SCALE - 1 INCH = 30 FT.

JOB NUMBER 0802.48
 JOHN A. LAMBIE - COUNTY ENGINEER
 SURVEYED OCTOBER 1965
 SURVEYED ON REQUEST OF THE CHIEF ENGINEER
 COUNTY FIRE PROTECTION DISTRICTS UNDER SEC.
 79, ORD. 4099, BY LETTER DATED SEPT. 14, 1965
 BEARINGS ARE BASED ON THE BEARING OF
 THE WEST LINE OF SECTION 14, T. 3 S., R. 11 W.
 PER C.S.B.-2544
 F. B. 3138-151-158
 FIELD WORK BY K. MYERS
 OFFICE WORK BY G.L. LUDVICKSON
 CHECKED BY S. SHINODA

IM 34

FOR TOPOGRAPHY PRIOR TO CONSTRUCTION SEE
 SURVEY DIVISION FILE MAP NO. P.T. H-110

CSB-2968
 A1 of A2

SECTION

14.

T. 3 S., R. 11

TRACT NO. 23378

M.B. 635-18-19

FOSTER RD.

TRACT NO. 24034

M.B. 635-15-17

LUITWILER LA MIRADA

Section Line and Center Line per C.S.B-2544

1039.53

N.E. PROPERTY CORNER
See County Engineer's monument
located at the intersection of
the section line and distance 100.00
to the property corner per
C.S.B. 3138-158.

N.W. PROPERTY CORNER
See County Engineer's monument
located at the intersection of
the section line and distance 100.00
to the property corner per
C.S.B. 3138-158.

S.E. PROPERTY CORNER
See County Engineer's monument
located at the intersection of
the section line and distance 100.00
to the property corner per
C.S.B. 3138-158.

FIRE STATION SITE NO. 49
GROSS AREA - 0.551 ACRES
NET AREA - 0.466 ACRES
O.R.

S.W. PROPERTY CORNER
See County Engineer's monument
located at the intersection of
the section line and distance 100.00
to the property corner per
C.S.B. 3138-158.

P.I.
Established of record distance (100.00)
N by from section corner per C.S.B-2544
holding set
F.B. 3138-158

N 0° 36' 30" W (2268.00) per F.B. 2378-8-12

N 17° 05' 10" E

C.S.B-819

Found spike and washer 1" below
surface See F.B. 2378-12, F.B.
3138-157

Found Red Dead Brass Cap monument
marked "L.A. Co. Rd Dept 1960" in
notebook. See also F.B. 2378-12, 304
F.B. 3138-158

See square found spike
by witness per
F.B. 3138-158

See square found spike
by witness per
F.B. 3138-158

See square found spike
by witness per
F.B. 3138-158

SECTION

15,

T. 3 S.,

R. 11 W.

TRACT